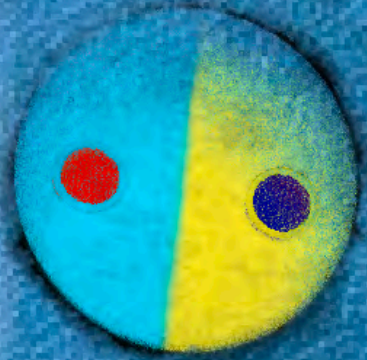


Travel Log

SUPERLINER EXPRESS



NAME B. SWARDY & SARAH L.
ADDRESS 2684 LACY ST. APT. #205
CITY LOS ANGELES STATE CALIFORNIA



ALL ABOARD!

THE SUPERLINER EXPRESS

Direct from Los Angeles, California



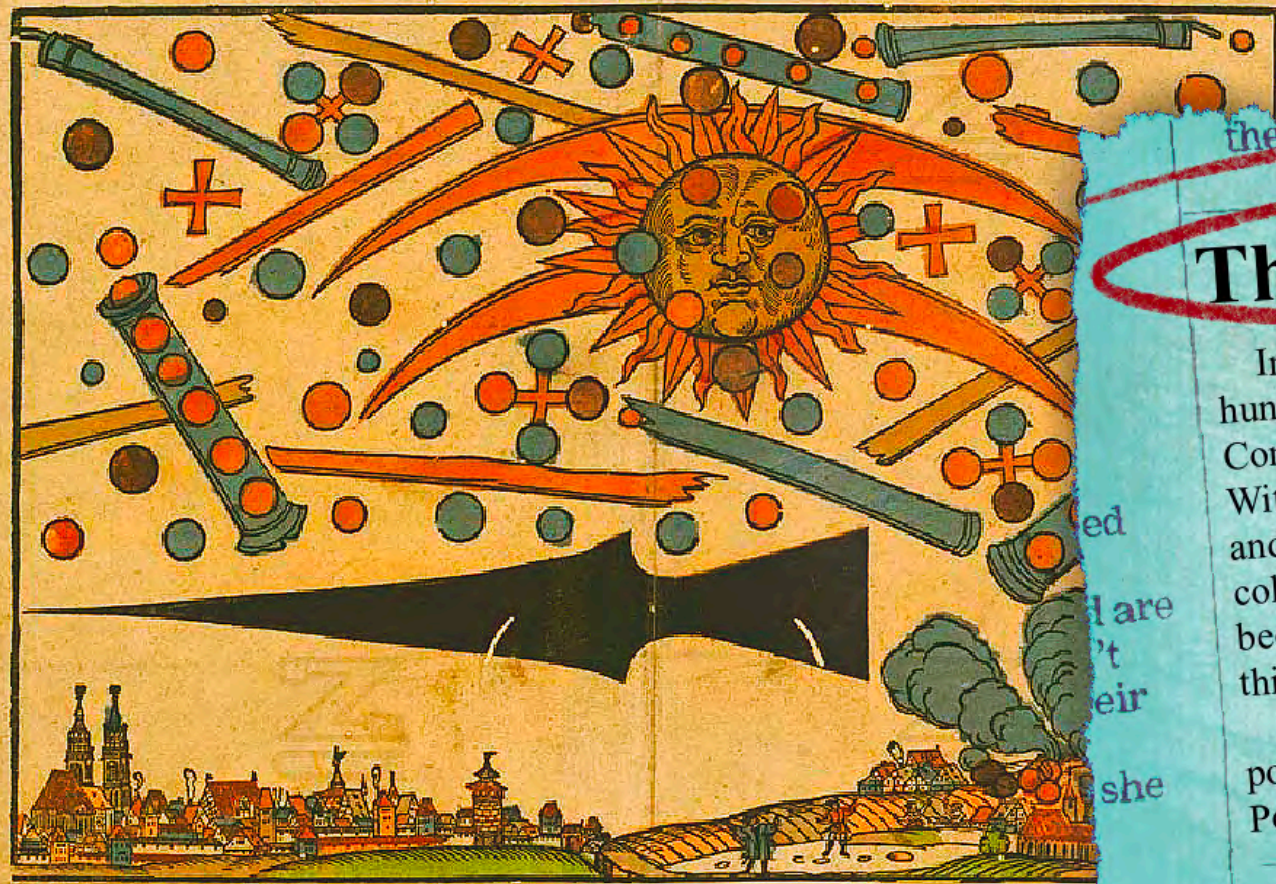
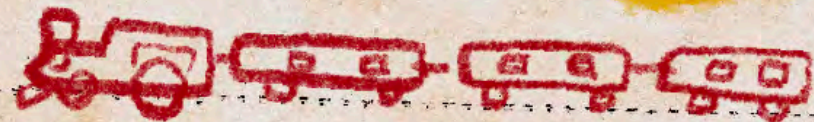
DEAR MOM,
THE SUPERLINER WAS AMAZING! A MUSICAL EXPERIENCE INSTALLATION WHERE I WAS ABLE TO ENTER THE WORLD OF SWARDY'S MUSIC VIA A MAGICAL TRAINRIDE THAT GOES TO A FAR DISTANT PLACE CALLED HALF MOON LAGOON! FOR THE OMNICONJUNCTION!



ATTN:

A NEW WAY TO SEE A MUSICIAN PERFORM:

INSIDE THE STORY



The Omni-Conjunction

In an event that only occurs once every hundred and four thousand years, the Omni-Conjunction is the celestial event of a lifetime. With all planets in alignment between the Earth and Sun, it will be a cosmic display of light and color. Don't ask the scientists how it works because they themselves cannot explain how this spectacle occurs.

People are expected travel far and wide on a potentially perilous journey to reach the West Pole, where it will be most visible.

THE STATION



WHILE WAITING FOR THE TRAIN:

- BUY A SNACK OR DRINK AT THE BAR!
- READ PUBLICATIONS AT THE NEWS STAND!
- TAKE A TURN AT THE ARCADE CABINETS!
- BROWSE THE GIFT SHOP

SOUTHERN PACIFIC COMPANY No. 50779 T1

TRAIN ASSIGNMENT TRAIN No. 44

Form 2-43 DATE OCT 25 1945

STATION STAMP
SOPAC.CO
OCT 24 45
LORE PINE.CAL

FROM LOS ANGELES
TO CHICAGO

NOTE: This assignment is not a guaranty that coach or other space will be furnished on the train and date specified, and this Company reserves the right either to reassign or transfer passengers to other train or date, as circumstances require.

SOUTHERN PACIFIC L-1001 A 46456

Daylight

CHAIR CAR SEAT
Reservation Memorandum

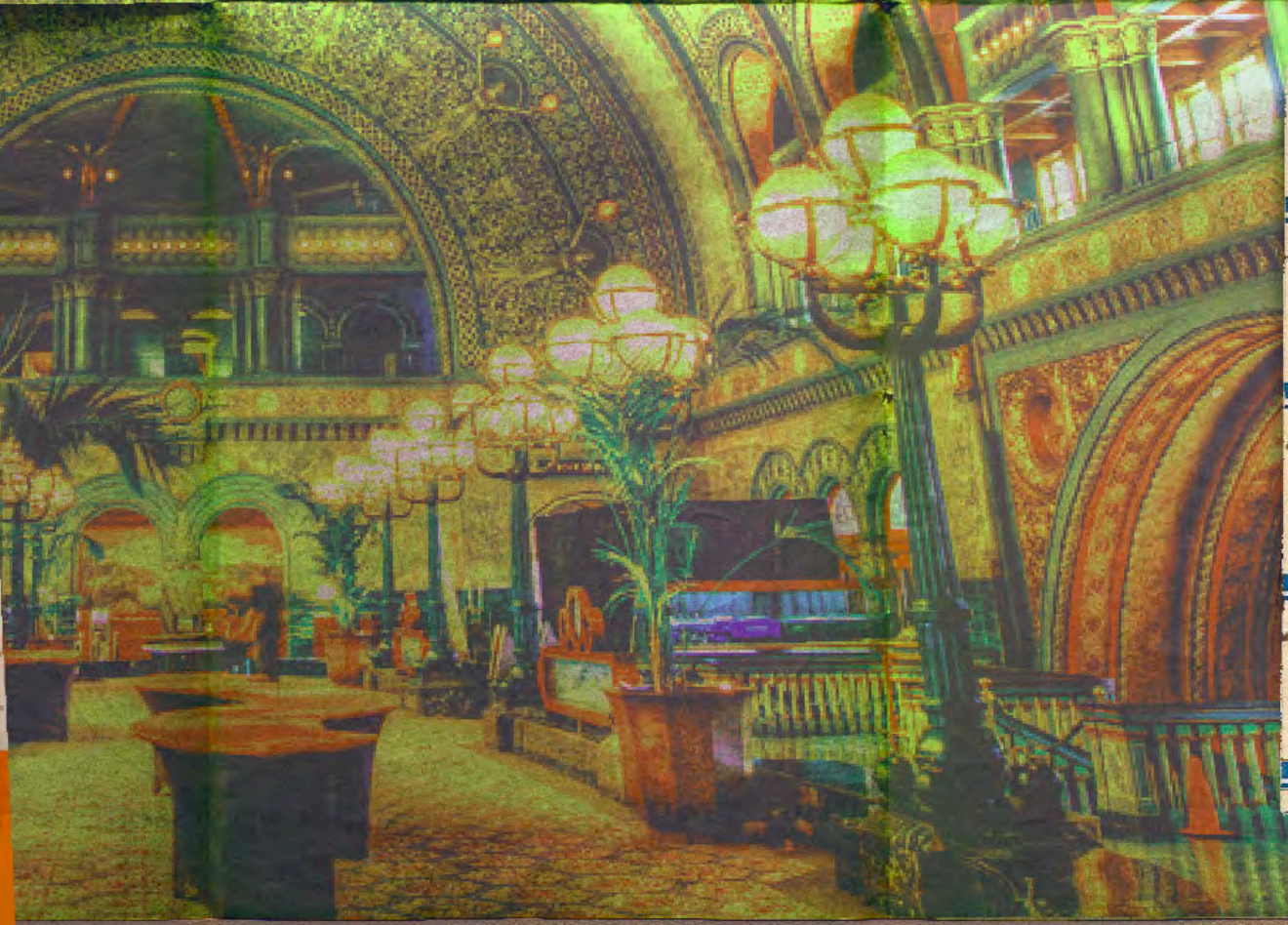
ALSIDE SEAT No. 24
WINDOW SEAT No. 2
CAR No. 2

TRAIN No. 98 DATE 10/25
FROM SAN FRANCISCO (STATION)
TO LOS ANGELES

TRAVEL TO HOLD. THIS RESERVATION IS FOR ONE SINGLE FOP ONLY. IF YOU CHANGE OR POSTPONE TRIP PLEASE NOTIFY AGENT AT ONCE.

THE CROWD-FACING ENTRANCE TO SUPERLINER IS A TRAIN STATION. IT'S AN OPEN AREA TO RELAX IN AND EXPLORE AS YOU WAIT FOR YOUR SCHEDULED TRAIN RIDE.

* ADMIT ① *



BY TRAIN 

BY TRAIN 

BY TRAIN 

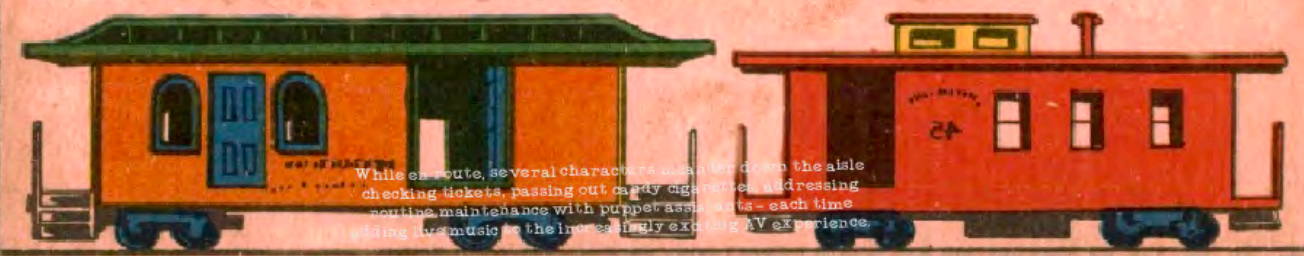
BY TRAIN 

WHO IS SWARDY ON A TRAIN?



15 SUPERLINER trading cards

Close to departure time, travelers are greeted by Superliner's conductor, Swardy! Sliding doors reveal a charming train car interior with booth seating. The music starts as participants board and sit down.



While en route, several characters are paired on the aisle checking tickets, passing out curvy cigarettes, addressing routine maintenance with puppet announcements - each time adding to the music in the increasingly exciting AV experience.

AS they lurch forward, THE LED windows become THE SHOW! Superliner travels from the STATION OUT INTO THE WORLD



EN ROUTE, DIFFERENT CHARACTERS CHECK TICKETS, SERVE TEA, AND PLAY WITH THE TRAVELERS



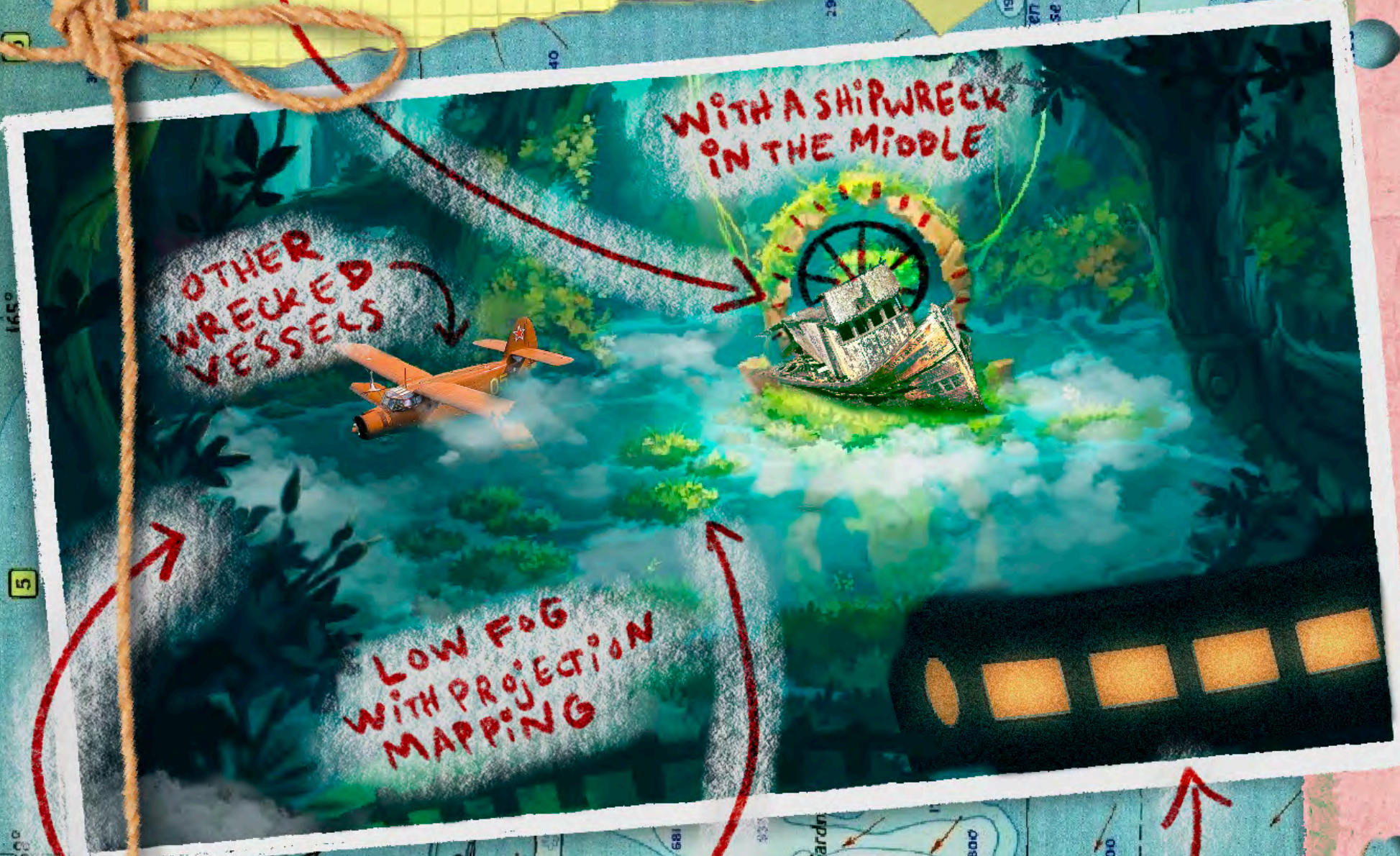
All paired with the music!

CAFE-LOUNGE CARS IN SERVICE, DESIGNED AND BUILT BY C & E I RV. 64478

THROUGH THE WINDOWS: OTHER VESSELS CAN BE SEEN MAKING SIMILAR JOURNEYS. PLANES, CARS, BOATS, ALL HEAD TOWARD HALF MOON LABOON. BUT A BIG STORM TAKES THEM OUT ONE BY ONE...

UNTIL IT HITS THE TRAIN!

THE STORM HAS KILLED THE POWER. IT IS DARK FOR A BEAT THEN — DOORS OPEN & PASSENGERS EXIT INTO A WARM LAGOON.



PROJECTION MAPPED BACKGROUND

PADDED AREAS TO WATCH THE PERFORMANCE

TRAIN YOU ARRIVE ON



The ship captain begins his song, emerging from below deck. He begins fixing the broken vessel — each repair adding a dynamic to the performance.

- ◆ A broken searchlight becomes his spotlight
- ◆ A swipe of paint reveals a swirling projected mural
- ◆ The dejected fog horns reform adding concert brass

As sunset approaches, weary travelers join from every direction: a submarine resurfaces nearby, the pilot rows her floating biplane the last few meters to join the crowd.

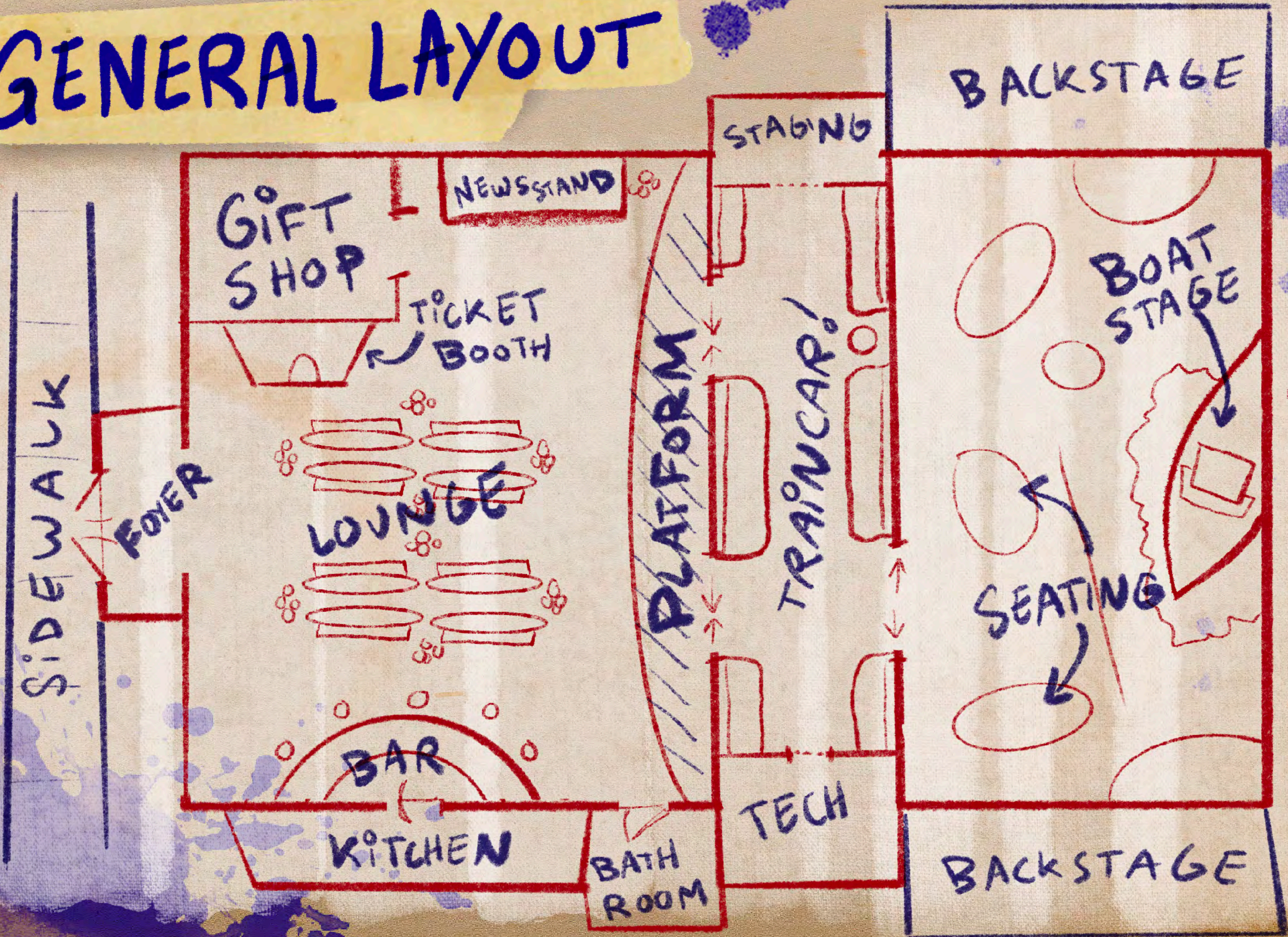
Arriving characters donate pieces of their own wrecks and add to the musical calamity.

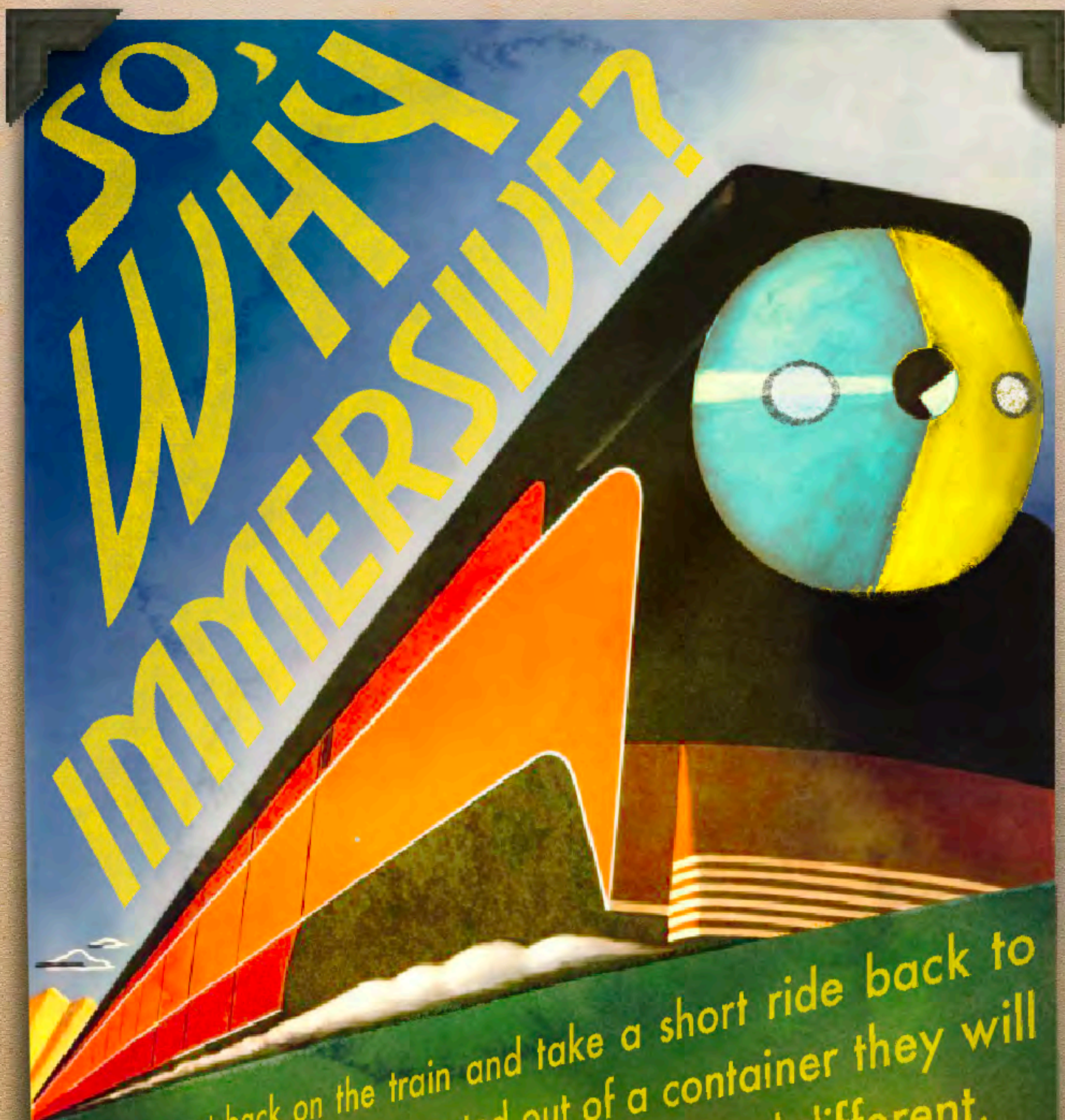


Day turns to night and the celestial formation begins to take shape overhead. The ship captain finally adds the wheel of his wreck — the last broken pieces of the boat.

The music hits a climax and the cosmic light show goes full tilt. The captain gives the wheel a spin and the lights and projections begin strobing! Like magic, the spokes of the wheel begin to animate in a celestial display of both practical effects and projection mapping.

GENERAL LAYOUT





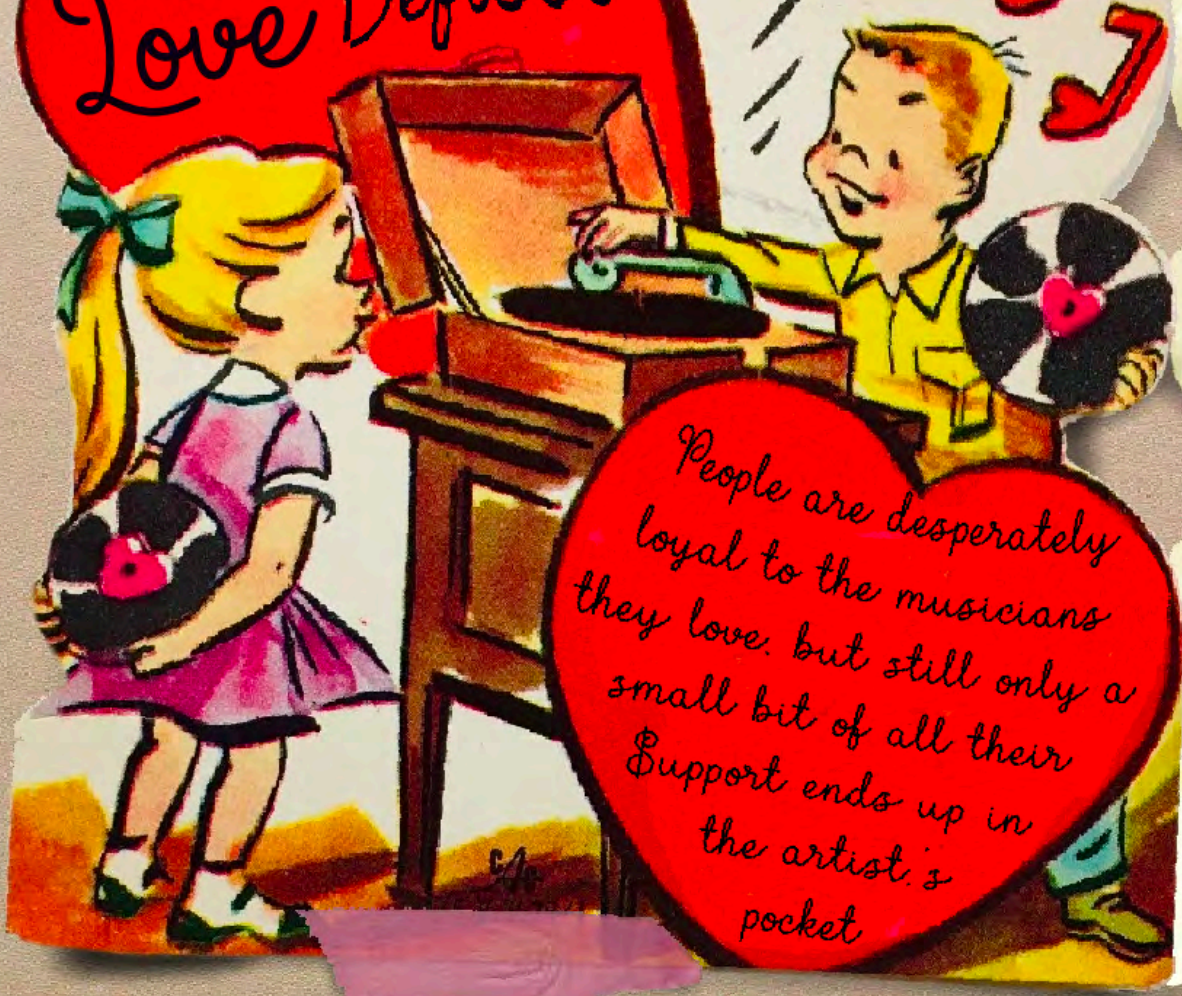
As travelers get back on the train and take a short ride back to the station, they are being transported out of a container they will remember as something forever special, personal, and different.

This show will break the wall between artist and patron:

ALLOWING THE TWO TO COEXIST INSIDE OF A STORY THEY WITNESSED TOGETHER.

PLUS,

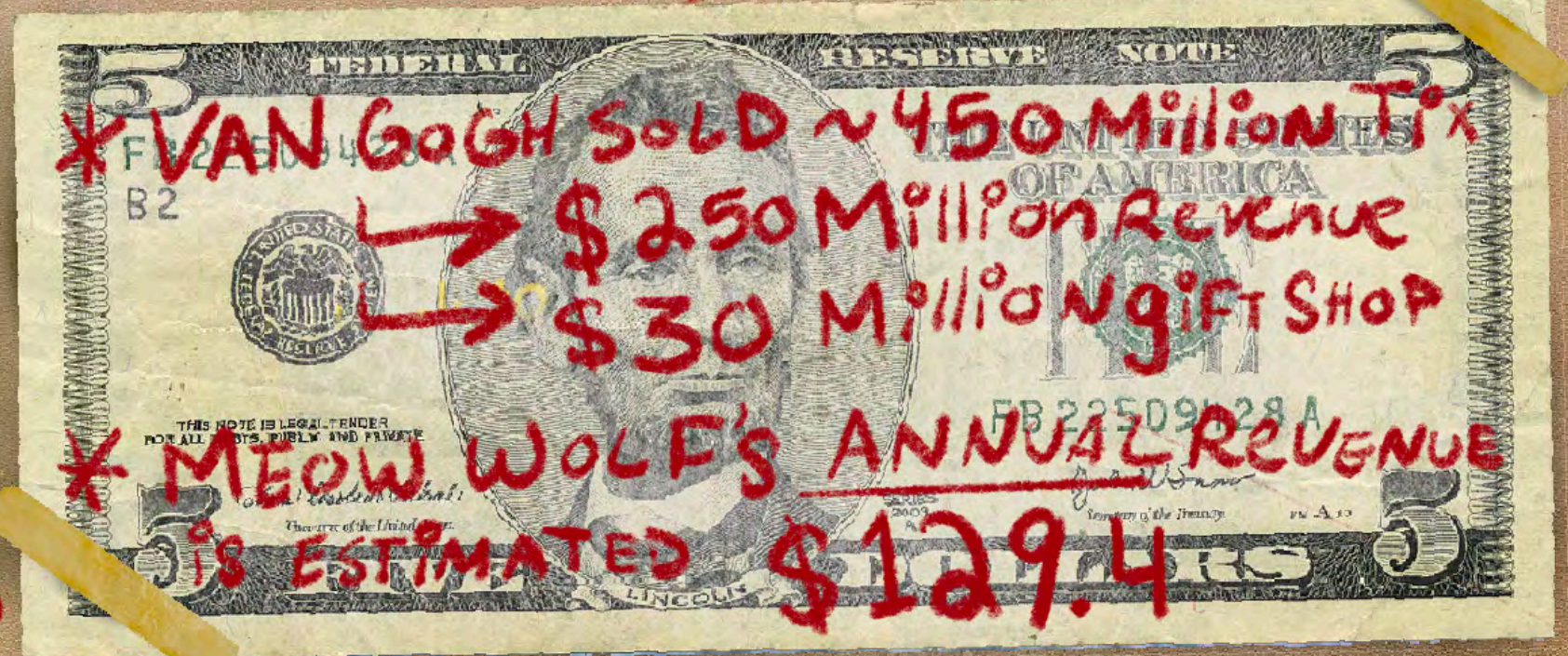
The Love Deficit



People are desperately loyal to the musicians they love, but still only a small bit of all their support ends up in the artist's pocket

This is a New, more intimate way For Fans to show Support!

BUT MAINLY, IT WORKS!



* VAN GOGH SOLD ~ 450 Million Tix
→ \$250 Million Revenue
→ \$30 Million Gift Shop
* MEOW WOLF'S ANNUAL REVENUE IS ESTIMATED \$129.4

Fundraising Goals

→ \$50k Fans & Family

→ \$250k Seed Round

How to SCALE:

A) TOURING INSTALL

- WIDER FANBASE TICKET SALES
- NEW MARKETS FOR IMMERSIVE ART
- MINIMAL STARTUP EXPENSES

B) PERMANENT VENUE

- MULTIPLE ROTATING SHOWS
- 1 TICKET, SEVERAL EXPERIENCES
- TOURIST DESTINATION

PLEASE PAY THIS ACCOUNT AT
Dr. to **REVENUE PROPOSITION** RAILWAY COMPANY

The only valid receipt of payment of this account is the receipt of the Railway Company.

Date	Particulars	Quantity	Rate	Total	Part On	Account to Eng

- Multiple ticketed performances per night, at 60 dollars a ticket, located in Los Angeles
- Gift shop with both Superliner and Swardy merchandise
- Corporate buyouts
- Food and beverage sales from the bar



Sarah

SWARDY

Sarah is an award winning director and experiential artist. After graduating from USC with a BA in film production, she's worked with orgs like PBS, Meow Wolf, and HBO. Currently she's creating an immersive prank show with Absolutely, an interactive musical comedy live show, and an event activation for MAPS.

Swardy is an electronic music composer whose loyal fanbase has grown around his magical ability to world build through music, visual lore, and an intimate social media presence. He's been featured in Forbes, Rolling Stone, and Wired. Swardy has toured the world several times and collaborated with artists like Skrillex, Porter Robinson, and Madeon.





THANK
YOU
FOR COMING ABOARD