

cado

Quick Start Guide

Guide de démarrage rapide

Schnellstartanleitung

Guida Rapida

Skrócona Instrukcja Obsługi

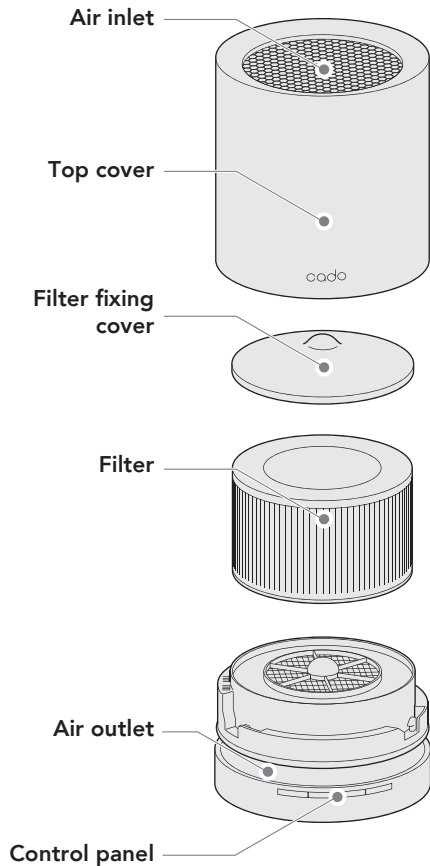
Air Purifier

LEAF

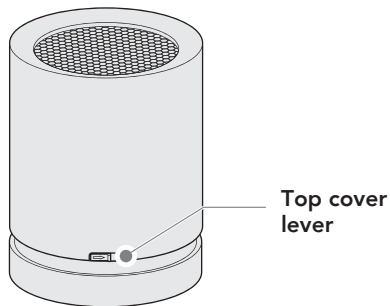


120

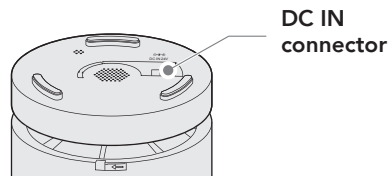
# Parts



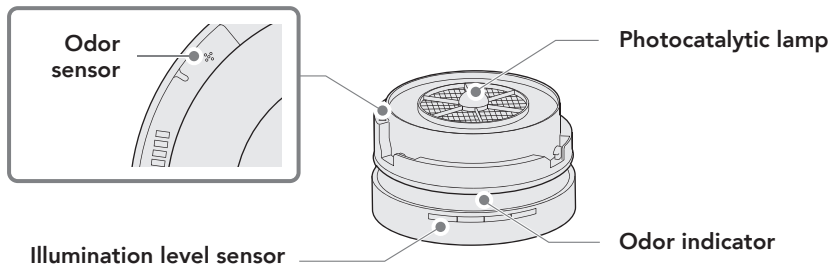
## Unit back face



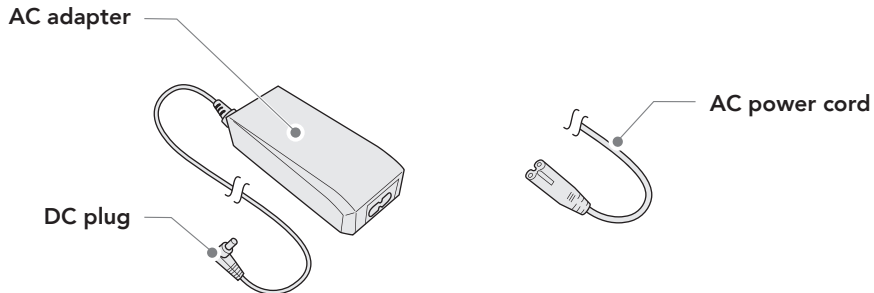
## Unit bottom face



## Sensors



## AC adapter



### Note:

- This appliance is not designed to eliminate all toxic substances in the air (for example, it does not eliminate carbon monoxide from cigarette smoke). Furthermore, this appliance cannot ventilate. When using the appliance in a closed room, periodically ventilate the room.

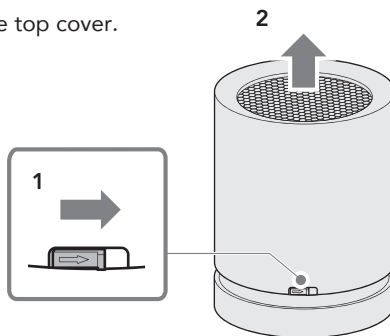
# How to start

## Installing filter

### Note:

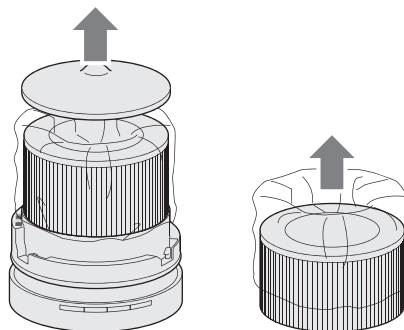
- Make sure that the power is turned off when installing a filter.
- When installing a new filter, take the new filter out of the bag and then install it.

1. Slide the top cover lever to the right and remove the top cover.

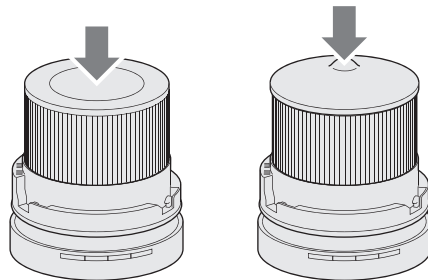


2. Remove the filter fixing cover.

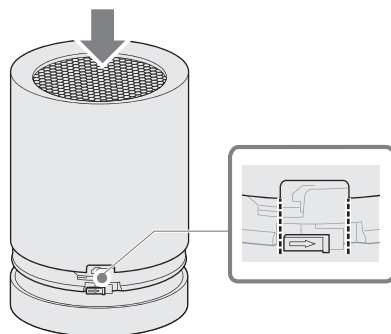
3. Take out the filter and remove the bag.



4. Set the filter on the base unit.
5. Place the filter fixing cover.



6. Install the top cover by aligning the top cover notch and lever position.

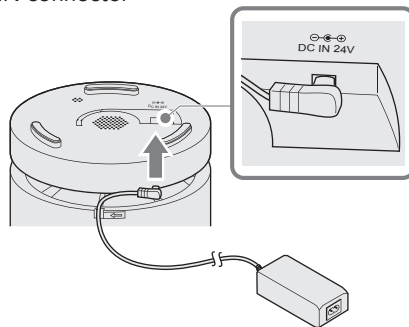


## Connecting power

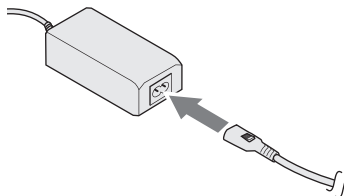
### Note:

- The supplied AC adapter is made for the base unit.  
Do not connect it to any appliance other than the base unit.

1. Insert the DC plug of the AC adapter in the DC IN connector on the bottom face of the base unit.

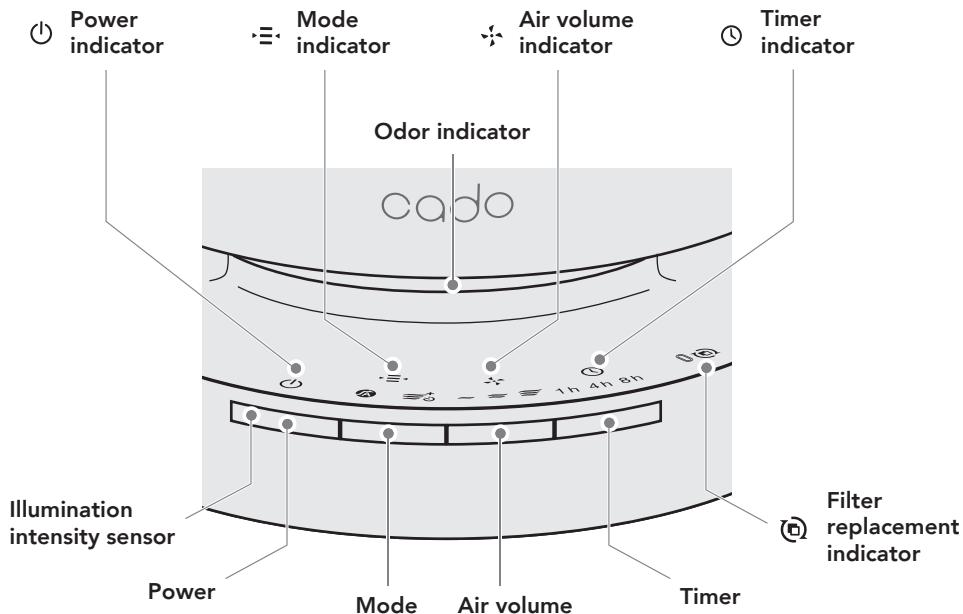


2. Connect the AC power cord to the AC adapter.
3. Connect the power plug to a power outlet.  
All indicators turn on for about 2 seconds when the power is connected normally.



# How to operate

## Control panel



## Starting the unit

Press the power button. ⏻

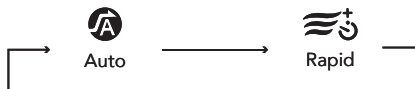
The indicators turn on and the appliance starts operating in automatic mode.

The indicator turns off and the appliance stops operating when the power button is pressed while the appliance is in operation.

## Selecting the operation mode

Press the mode button. 

The operating mode (indicator) changes according to the sequence described.



### About operating modes



Auto

Normally use this mode.

The room condition is detected with the odor sensor, and the air volume setting switched between low, middle, and high.



Rapid

Use this mode if you want to quickly clean the air. The unit operates with an air volume stronger than the high air volume setting for 2 hours, then changes to automatic mode.

### Note:

- Operating mode and manual mode cannot be set simultaneously.

## Selecting the air volume

Press the air volume button. 

Air volume can be set to the desired level, regardless of the degree of contamination of the air in the room.

The operating mode (indicator) changes according to the sequence described.



### Note:

- Manual mode and operating mode cannot be set simultaneously.



## Selecting the operation time

Press the timer button. 🕒

The power turns off automatically when the specified time elapses.

The timer time (indicator) changes according to the sequence described.



## Photocatalytic lamp

The activated carbon included in the filter uses photocatalytic technology that reacts to visible light.

The lamp installed in the appliance uses a long-life blue LED and does not have any effects on the eyes or human body in the way ultraviolet rays do. However, since the light is strong, turn off the power of the base unit to ensure there is no direct exposure to the light when removing the filter, e.g. when replacing it.

## Dimmer function

The brightness of the surrounding area is detected by the illumination level sensor, which is located inside the power button. When the surrounding area becomes dark, the lit photocatalytic lamp and odor indicator are also dimmed.

## Odor indicator

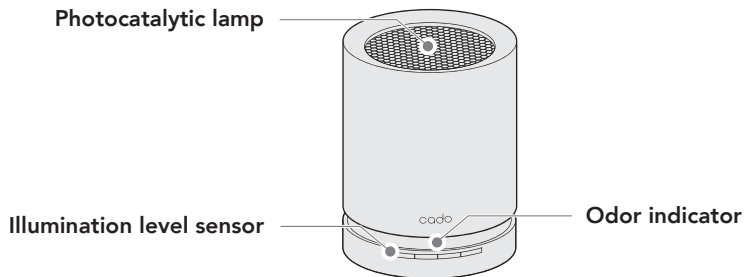
The odor sensor detects pollutants in the air and indicates the air conditions in the room using the three colors blue, yellow and orange.

Blue	Clean
Yellow	Slightly polluted
Orange	Polluted

## About the odor sensor

The odor sensor primarily detects the odors of cigarettes, pets and cosmetic products.

- The odor sensor may react to the gas and alcohol contents of a spray, as well as changes in temperature and humidity. Furthermore, the sensor may not react depending on the components of the odor.
- The odor sensor initializes for about five minutes after the power cord is connected, and the appliance is unable to make accurate detections during that time. Wait for a moment and see whether the odor indicator changes to a different color. It is also recommended to connect the power cord when the air in the room is clean (free of cigarette smoke, etc), since the appliance uses the conditions of the air during the initialization process as a basis for its operation.
- The odor sensor makes a relative detection of the conditions of the air in the room. If the intensity of an odor does not vary even when the odor is strong, the sensor may not react to this odor for that reason.

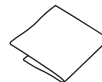


# Maintenance

- Continuing to use the appliance without cleaning it can result in insufficient performance of its air purifying functions, due to reasons such as accumulation of dust. Clean the appliance periodically (once or more per month is recommended).
- Failure to clean the appliance periodically may void the manufacturer warranty when malfunction occurs due to contamination or similar reasons.

A soft cloth available in the marketplace, a cotton swab, or a vacuum cleaner come in handy for cleaning.

Use a neutral detergent diluted with water to remove stubborn stains.

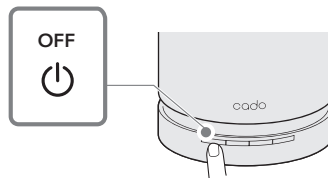


## Note:

- Do not use any stiff brushes. Using such items may scratch the base unit.
- When using detergent, always use a neutral detergent. Using any other detergent may cause damage or warp the unit.
- Properly remove the neutral detergent with a clean cloth after cleaning.
- Remove the filter and other attachments from the base unit to ensure that detergent will not splash on the filter when cleaning the base unit.

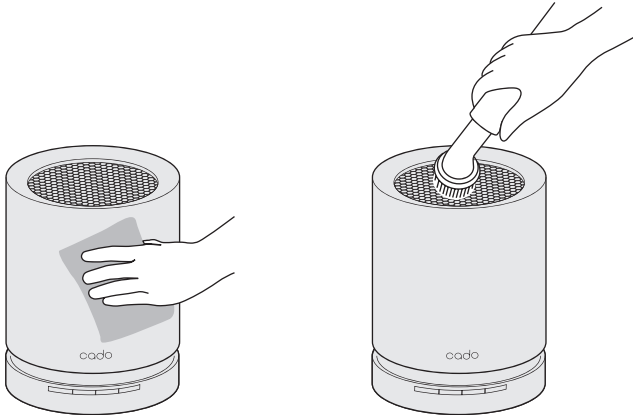
## Unit

1. Turn off the power of the base unit and pull the power cord out from the power outlet.



2. Wipe dust from the unit with a soft cloth.

3. Remove dust on the air inlet and air outlet by cleaning with a vacuum cleaner or the like. Alternatively, remove it with a soft cloth.



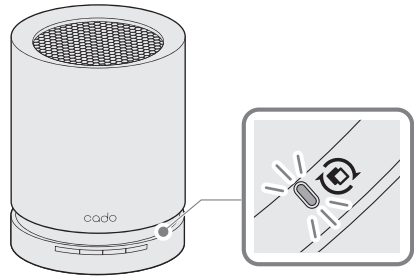
## Filter

**The filter is a consumable part and must be replaced by periodically purchasing a new filter.**

- The replacement timing varies depending on the environment where the appliance is used, but a rough standard would be to replace it every six months to a year.
- When the appliance is used in a location with very contaminated air, the replacement period may come earlier.
- The filter may emit odor in a few weeks to a few months and may require replacement, depending on the operating environment.
- If the smell becomes noticeable then replace the filter, or alternatively the situation may be improved by drying the filter under sunlight in a well-ventilated place for about a day (this does not guarantee that there will be a recovery of functionality).

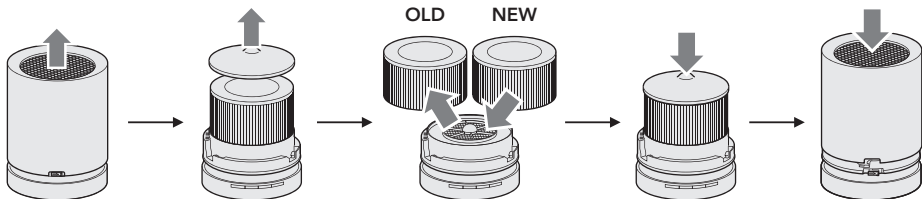
## Filter replacement

When the filter needs to be replaced, the filter replacement indicator will light up. Replace the filter with a new filter.



## Filter replacement method

Refer to 'How to start - Installing filters' to remove the old filter and change it with a new filter.



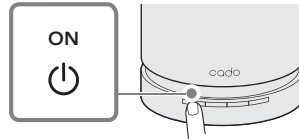
## Reset the filter replacement indicator

The filter replacement indicator will not turn off even after the filter has been replaced. Initialize the filter replacement indicator with the procedure described below.

### Note:

- The filter replacement indicator is also initialized when the filter is replaced and the operation described above is performed before the filter replacement indicator is turned on.

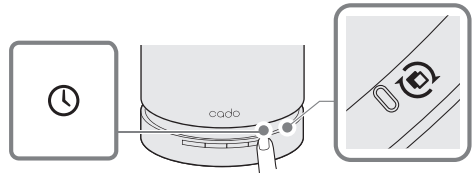
1. Press the power button and turn on the power of the unit.



2. Continue to press the timer button for about 5 seconds to flash the filter replacement indicator.



3. Press the timer button again immediately to turn off the filter replacement indicator and complete initialization.



# Specifications

## LEAF 120

---

<b>Model</b>	AP-C120
<b>Power</b>	24V DC (AC adapter: 100 - 240V 50 - 60Hz)
<b>Applicable floor area (m<sup>2</sup>)</b>	25 *1
<b>Dimensions (mm)</b>	∅ 240 × Height 315
<b>Weight (kg)</b>	4.6 (including the filter)
<b>Power cord length (m)</b>	AC power code: 0.7 / DC power code: approximately 1.8

<b>Operation mode</b>	Low	Middle	High	Rapid (2 hours)
<b>Power consumption (W)</b>	0.2	0.4	0.7	1.5
<b>Air volume (m<sup>3</sup>/h)</b>	34	77	109	180
<b>Operational noise (dBA)</b>	14	28	39	59

### Accessories

Safety precautions, Quick start guide, Warranty card,  
AC adapter, AC power cord, Filter FL-C120 \*2

\*1 Calculated using a testing method based on JEM1467 of the Japan Electrical Manufacturers' Association when operating on rapid mode.

\*2 Dimensions (mm) ∅ 200 × Height 120 • Design and specifications are subject to change without notice.

cado

Safety Precautions

Précautions de sécurité

Sicherheitsvorkehrungen

Precauzioni sulla sicurezza

Zasady dotyczące bezpieczeństwa

Air Purifier

LEAF



120



# Safety Precautions

## About This Document

This Instruction Manual features important precautions to prevent accidents. Please read these “Safety Precautions” and the separately attached Instruction Manual carefully before using the appliance to ensure correct and safe use. Please keep these documents after reading.

## Make sure you observe these safety precautions.

Make sure you observe all precautions described in this document to prevent damage to property or prevent harm to yourself or others. Descriptions are categorized according to the extent of danger or damage that can arise due to erroneous use of the appliance.

### Explanation of Markings



**Warning**

This indicates that it may cause death or serious injury.



**Caution**

This indicates that it may cause minor injury or property loss.

### Explanation of Symbols



**Prohibited**

This indicates prohibited matters.



**Required**

This indicates compulsory matters to be followed.

## Warning

### Prohibited

#### ■ Do not touch the power plug with wet hands.

It may cause electric shock.

#### ■ Do not damage the power cord.

Damaging the power cord may lead to shortage or broken wires and cause electric shock or fire. Follow the items below regarding the power cord.

- Do not manipulate or damage the power cord.
- Do not forcibly bend, pull, twist, or bundle the power cord or put heavy loads on the power cord.
- Do not place the power cord close to a heater.
- Do not heat the power cord.
- Do not remove the power plug by pulling the power cord.

• Do not pull the power cord when carrying.

#### ■ Do not use the appliance with an AC adapter other than the one supplied with the base unit.

Doing so may cause malfunction of the base unit, as well as fire or electric shock.

#### ■ Do not use a current other than specified voltage.

It may cause fire or electric shock.

#### ■ Do not use the unit in a way that exceeds the rating of the wall outlet or wiring devices.

If you exceed the power rating by using a power strip or the like, it may cause fire.

■ **Do not disassemble, reform, or repair the unit by yourself.**

It may cause fire, electric shock, or injury.

For repairs, please consult a dealer or your nearest customer service center.

■ **Do not use the unit in the following locations:**

- In areas with flammable gas or places with metal dust
- It may lead to the gas catching on fire, igniting, or fuming due to dust being sucked into the unit.
- In bathrooms or other wet areas, or areas with high-temperature and humidity.
- It may lead to fire or electric shock due to voltage leakage.
- In areas with oil components such as machine oil or cooking oil.
- It may lead to electric shock or injury due to the unit cracking and exposing the power area or fan area.
- In locations where the unit is within reach of children
- It may cause electric shock or injury.

■ **Do not subject the unit to moisture or water.**

It may cause fire or electric shock.

■ **Do not bring the unit near open fires such as lit cigarettes or incense.**

 **Required**

■ **Plug the power plug in all the way.**

If it is not plugged in all the way, it may cause electric shock or fire.

- Do not use damaged power cords or power plugs, or wall outlets that are loose and do not hold the plug.

■ **Regularly wipe dust from the power plug with a dry cloth.**

If dust builds up, it can lead to insulation failure from humidity, etc. and may cause fire.

- When not in use for a long period of time, remove the power plug from the outlet.

■ **During cleaning, inspection, and moving, make sure to**

It may cause fire.

■ **Do not insert fingers, metal objects or other foreign material in the air inlet, air outlet, gaps on the base unit, or other apertures.**

Doing so may cause injury, electric shock, short circuit, or ignition.

■ **Do not use chlorinated or alkaline detergents to clean the appliance.**

These detergents may produce toxic gas that is harmful to your health.

■ **Do not touch the base unit or power plug if you hear thunder.**

Doing so may cause electrocution.

■ **This appliance must not be used by the elderly, children, or persons with reduced physical, sensory or mental capabilities, unless they have been given appropriate supervision or instruction concerning the use of the appliance by a guardian or person responsible for their safety.**

■ **Children must be supervised to ensure that they do not play with the appliance.**

Doing so may cause unexpected injury, ingestion, malfunction of the base unit, or electric shock.

■ **stop operation and unplug the power plug.**

Leaving the power plug in the outlet may cause electric shock or injury.

■ **Stop operation of the appliance immediately when a bad odor or abnormally with the appliance is detected.**

Pull the power cord out from the outlet and consult our Customer Service Center.

■ **Make sure that pets do not urinate on the unit or bite the power cord.**

It may lead to electric shock or a fire. If one of the above situations occur, please consult a dealer or your nearest customer service center.

## **Caution**

### **Prohibited**

#### ■ **Do not sit or stand on the unit.**

Falling down from the unit or toppling may cause injury or malfunction.

#### ■ **Do not put the unit in unstable locations.**

If the unit falls over, it may cause an electric shock and lead to injury or damage.

#### ■ **Do not block the air inlet or air outlet.**

It may reduce the cleaning capability of the unit causing clean air not to circulate throughout the entire room. This may cause a malfunction.

#### ■ **Do not operate the unit without installing the filter.**

There is no cleaning effect and doing so may cause a malfunction.

#### ■ **Do not use the unit in place of a ventilating fan in the kitchen.**

This may remarkably lower the lifespan of the filter or lead to the unit becoming deformed.

#### ■ **Do not place the unit in direct sunlight or directly in the path of the air conditioner or heater's airflow.**

It may cause deformation, discoloration, or malfunction of the unit.

#### ■ **After maintenance, wipe off the water thoroughly and dry the unit. Do not use it when wet.**

It may lead to electric shock or injury.

#### ■ **Do not use chlorinated or acid detergents for cleaning.**

The detergent may produce toxic gas that is harmful to your health.

#### ■ **Do not wipe the unit with benzene or thinner or spray with insecticide.**

It may lead to cracks, electric shock, or fire.

#### ■ **Do not operate the unit when fumigating for pests.**

It may cause accumulated pharmaceutical ingredients to emit when using the unit later, which is harmful to your health.

#### ■ **Do not put your fingers or rod-shaped objects into the air inlet or outlet.**

It may lead to electric shock, damage, or injury.

#### ■ **Do not use the unit near a TV or radio.**

It may cause distortion of video images or noise (place the unit at least 1 m away from a TV or radio. Also, using the same wall outlet as these devices may cause distortion of video image or noise. If this occurs, plug it into a different outlet).

#### ■ **Do not place the unit in the same location for a long period of time.**

Using the unit in the same location for a long period of time may make the wall or floor around the unit dirty. It is recommended to move the location of the unit regularly.

#### ■ **Do not leave the appliance directly on a wooden floor or furniture for a long time.**

Leaving the appliance in the same location for a long period of time may leave marks on the installation surface from the rubber stands. Periodically change the location of installation or use a scratch-proof sheet for furniture, which is available on the marketplace.

## ! Required

### ■ When moving the appliance, do not hold onto any components that can detach from the base unit.

Doing so may cause the appliance to fall and cause injury or malfunction.

### ■ Install the filter properly.

Use genuine filters and install them according to the procedures described in the Instruction Manual to ensure that the functions of the air purifier are able to be sufficiently utilized.

### ■ Periodically open windows to ventilate the room when using the unit with a combustion appliance at the same time.

This unit does not have a function to eliminate carbon monoxide. If air ventilation is insufficient, it may lead to carbon monoxide poisoning.

## ■ Installing the unit

Place the unit on a flat surface. Also, for good air circulation, make sure the unit is located at least 30 cm away from walls, furniture, curtains, etc. on both sides, the front, back, and above.

