

SCHUMACHER®

since 1889

X
A
RUM
FELLOW



PHOTOGRAPHY BY ED SCHOFIELD

Schumacher is thrilled to be the exclusive U.S. distributor of textiles and wallpapers by **A Rum Fellow**, a dynamic London-based company that marries contemporary design and traditional production techniques. Founded by Caroline Lindsell and Dylan O’Shea and driven by an unrelenting commitment to beauty, craft, and quality, A Rum Fellow brings a fresh, modern sensibility to its stunning fabrics and wallcoverings. The textiles, woven by hand in Guatemala, and the wallpapers all bear enchanting artisanal designs with a sophisticated, yet relaxed style.

WALLPAPERS

The newest introductions to Schumacher's collaboration with A Rum Fellow are a host of wallcoverings imbued with a graphic, relaxed, contemporary appeal.



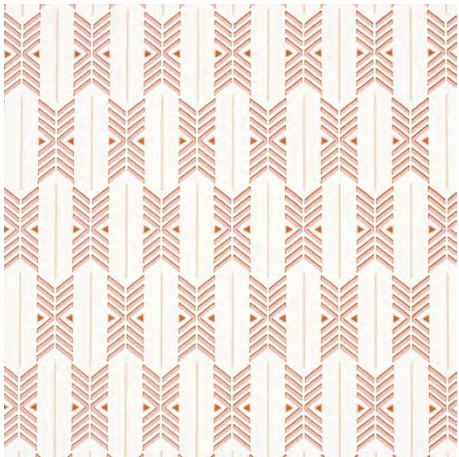
KALIDO
Honeycomb 5015792
Wallpaper



KALIDO
Pistachio 5015790
Wallpaper



KALIDO
Oat 5015791
Wallpaper



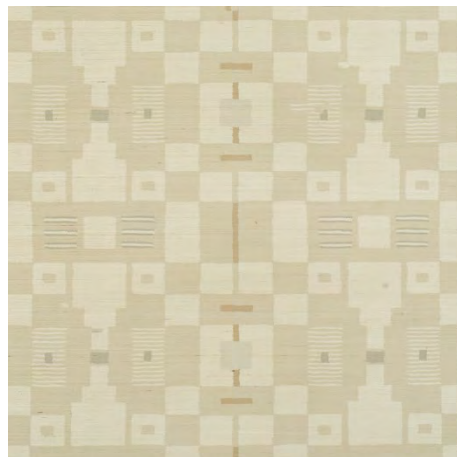
QUIVER
Sunset 5015812
Wallpaper



QUIVER
Sesame 5015810
Wallpaper



QUIVER
Haze 5015811
Wallpaper



PERISCOPE SISAL
Neutral 5015770
Wallpaper

IPALA STRIPE



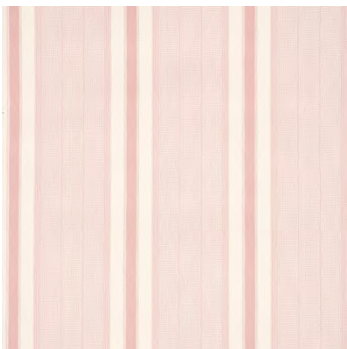
Ocean 5015801
Wallpaper



Sky 5015800
Wallpaper



Bisque 5015805
Wallpaper



Blush 5015803
Wallpaper



Ochre 5015804
Wallpaper



Fern 5015802
Wallpaper



PINULA TAPE
Melba 84104
Trim



PINULA TAPE
Oyster 84103
Trim



PINULA TAPE
Fern 84100
Trim



PINULA TAPE
Tide 84101
Trim



PINULA TAPE
Umber 84102
Trim

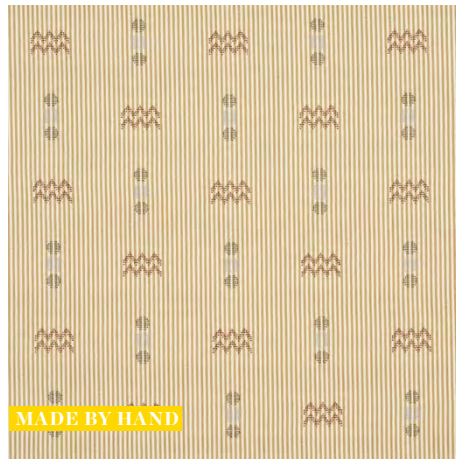
PHOTOGRAPHY BY NATALIE DINHAM



Pepenado is a traditional technique in which the weaver painstakingly threads graphic icons between the warp threads on a pedal loom.



RIBBON
Fiesta 82850
Fabric



RIBBON
Wheat 82851
Fabric



RIBBON II
Oregon 82860
Fabric

PHOTOGRAPHY BY NATALIE DINHAM



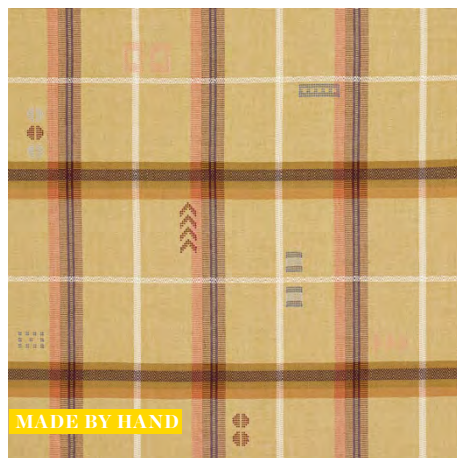
FABLE
Fjord 82840
Fabric



FABLE
Alpine 82841
Fabric



FABLE
Glade 82842
Fabric



FABLE
Dune 82843
Fabric

COURTESY OF A RUM FELLOW



Falseria is a traditional technique in which warp threads are lifted and lowered by hand as the weft on the shuttle is passed through. It's been practiced by Maya weavers since the Spanish first introduced it in the 16th century.



HOLMUL HAND WOVEN
Blue 78921
Fabric



HOLMUL HAND WOVEN
Ochre 78922
Fabric



HOLMUL HAND WOVEN
Autumn 78920
Fabric

INTERIOR DESIGN BY E & A INTERIORS



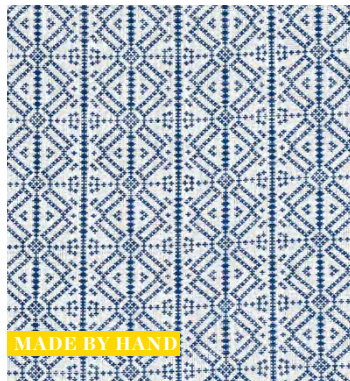
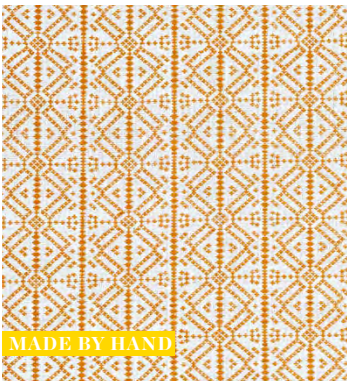
OCOSITO
HAND WOVEN
Black 78900
Fabric



OCOSITO
HAND WOVEN
Blue 78901
Fabric



OCOSITO
HAND WOVEN
Castor 78902
Fabric

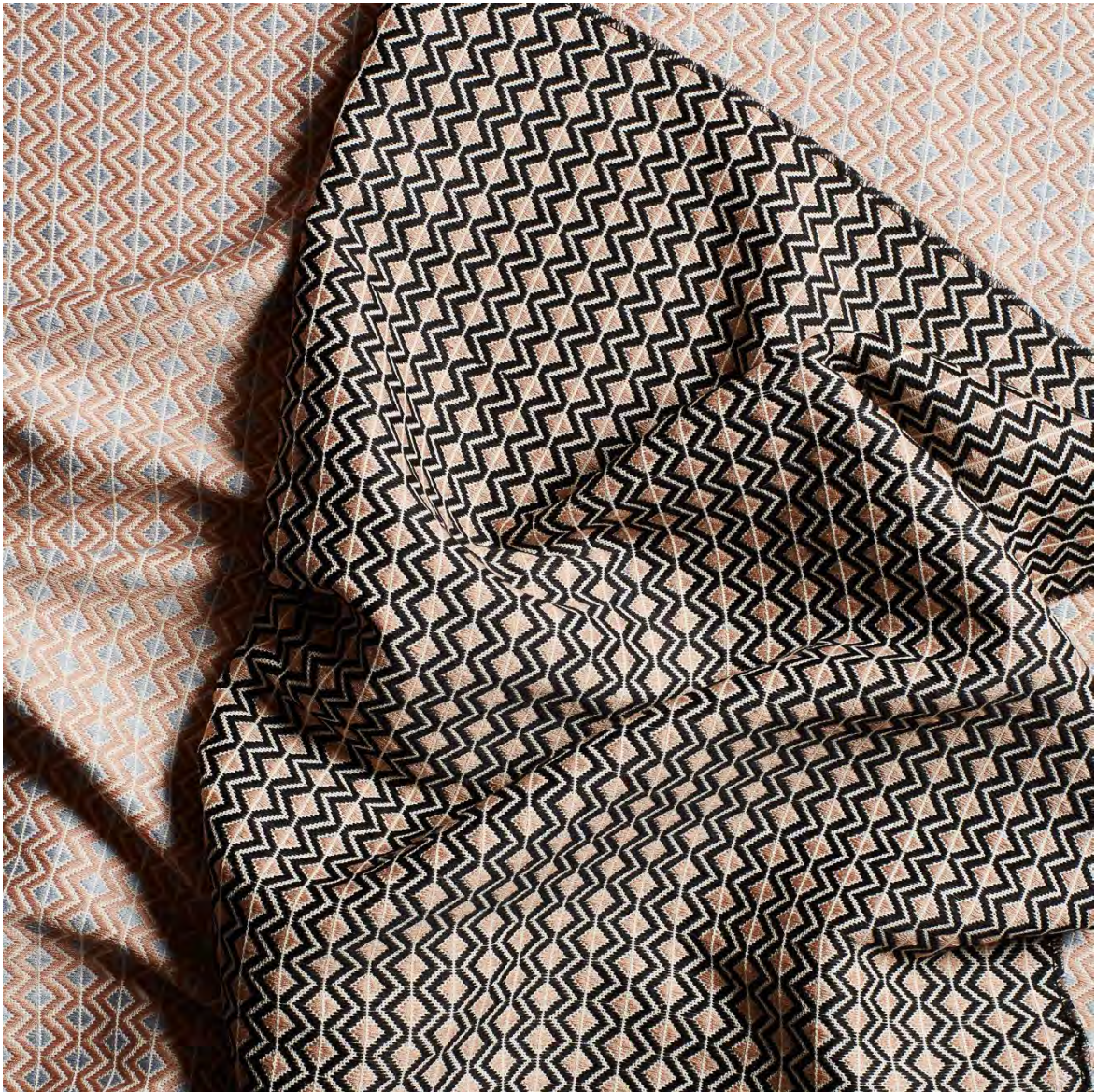


POXTE
HAND WOVEN
Mostaza 78890
Fabric

POXTE
HAND WOVEN
Navy 78891
Fabric

POXTE
HAND WOVEN
Zapote 78892
Fabric

POXTE
HAND WOVEN
Cloud 78893
Fabric



PINULA HAND WOVEN
Black 78910
Fabric



PINULA HAND WOVEN
Castor 78911
Fabric



LEMPA HAND WOVEN
Indigo 78880
Fabric

IPALA HAND WOVEN STRIPE



MADE BY HAND

Carmel 78835
Fabric



MADE BY HAND

Sky 78834
Fabric



MADE BY HAND

Pitch 78836
Fabric



MADE BY HAND

Ocean 78830
Fabric



MADE BY HAND

Palo Rosa 78831
Fabric



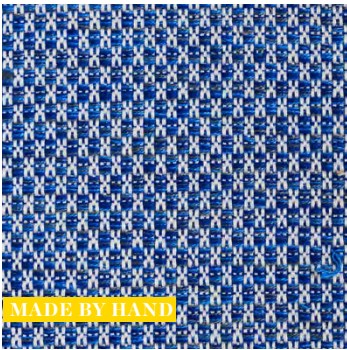
MADE BY HAND

Duck Egg 78832
Fabric



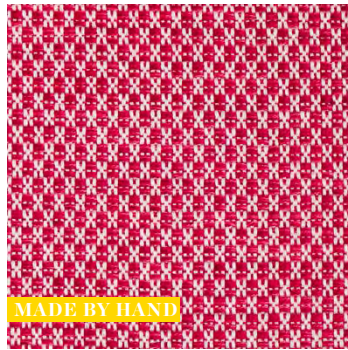
MADE BY HAND

Yellow 78833
Fabric



MADE BY HAND

MOMO HAND
WOVEN TEXTURE
Blue 78932
Fabric



MADE BY HAND

MOMO HAND
WOVEN TEXTURE
Rosa 78931
Fabric



MADE BY HAND

MOMO HAND
WOVEN TEXTURE
Fern 78933
Fabric

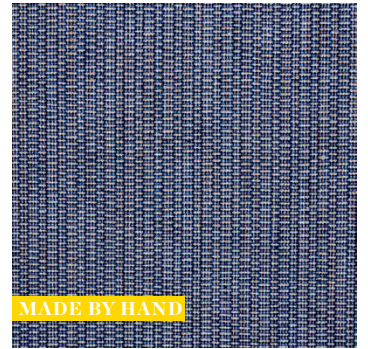


MADE BY HAND

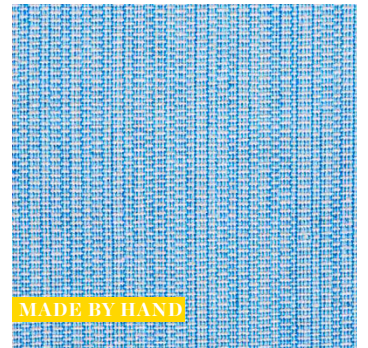
MOMO HAND
WOVEN TEXTURE
Blush 78930
Fabric



ISPA HAND WOVEN PLAIN



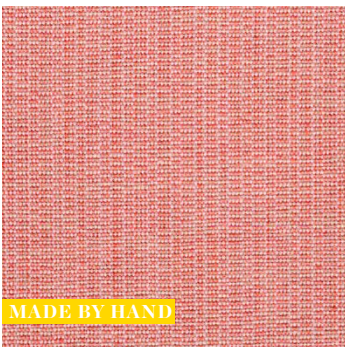
Indigo 78870
Fabric



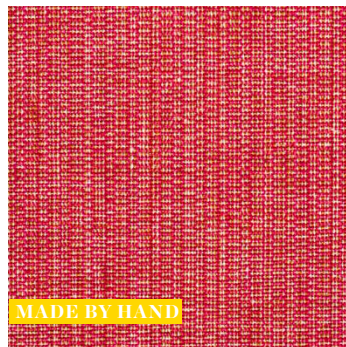
Celestial 78873
Fabric



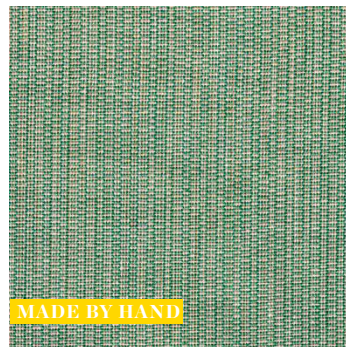
Verde 78874
Fabric



Blush 78871
Fabric



Rosa 78872
Fabric



Aqua 78875
Fabric



MADE BY HAND

PANAN HAND WOVEN
STRIPE
Claret 78850
Fabric



MADE BY HAND

PANAN HAND WOVEN
STRIPE
Mostaza 78851
Fabric



MADE BY HAND

CORCHA HAND WOVEN
STRIPE
Mono Multi 78840
Fabric



MADE BY HAND

CIRCO HAND WOVEN
STRIPE
Carnival 78860
Fabric

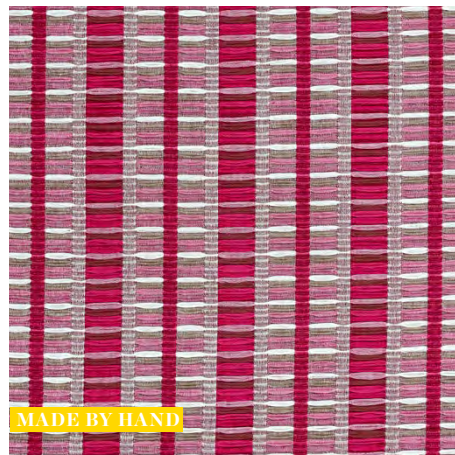


For this distinctive pattern, a two-layer warp is combined with different-size weft threads to achieve a highly textured ruffled textile.



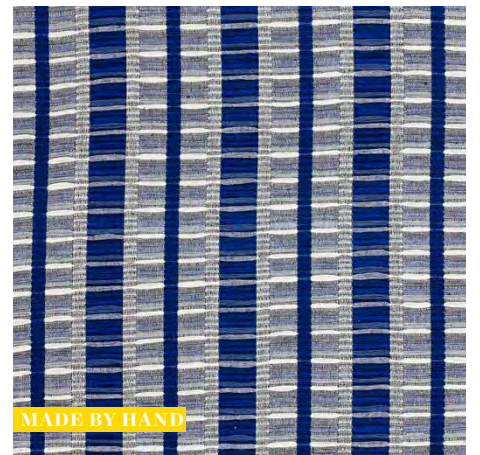
MADE BY HAND

PALOPO HAND WOVEN
STRIPE
Black 78820
Fabric



MADE BY HAND

PALOPO HAND WOVEN
STRIPE
Flamingo 78821
Fabric



MADE BY HAND

PALOPO HAND WOVEN
STRIPE
Azul 78822
Fabric

COTTON STRIPES

Spun and woven by hand on a pedal loom, A Rum Fellow's cotton stripes have an exquisite sensibility that's just right for today's chic, laid-back rooms.

PHOTOGRAPHY BY NATALIE DINHAM



MADE BY HAND

SCOOP HAND
WOVEN STRIPE
Neptune 80810
Fabric



MADE BY HAND

SCOOP HAND
WOVEN STRIPE
Breeze 80811
Fabric



MADE BY HAND

SCOOP HAND
WOVEN STRIPE
Sundae 80812
Fabric



MADE BY HAND

SCOOP HAND
WOVEN STRIPE
Parasol 80813
Fabric

PHOTOGRAPHY BY NATALIE DINHAM



MADE BY HAND

RIPPLE HAND
WOVEN STRIPE
Rockpool 80820
Fabric



MADE BY HAND

RIPPLE HAND
WOVEN STRIPE
Surf 80821
Fabric



MADE BY HAND

RIPPLE HAND
WOVEN STRIPE
Mineral 80822
Fabric

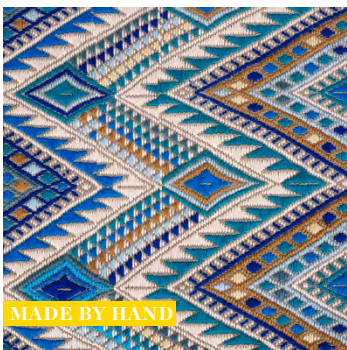


MADE BY HAND

RIPPLE HAND
WOVEN STRIPE
Macaroon 80823
Fabric

HANDWOVEN BROCADE PANELS

These exquisite brocade panels are simultaneously woven and embroidered entirely by hand by master Maya craftswomen in Guatemala. These textiles are ethically produced on traditional backstrap looms, a method that has been handed down in the local community for centuries. Slight variations are part of their inherent beauty and tell a part of their distinctive journey.



COYOLATE HAND
WOVEN BROCADE
Ocean 79240
Fabric



COYOLATE HAND
WOVEN BROCADE
Nougat 79241
Fabric



COYOLATE HAND
WOVEN BROCADE
Arctic 79242
Fabric



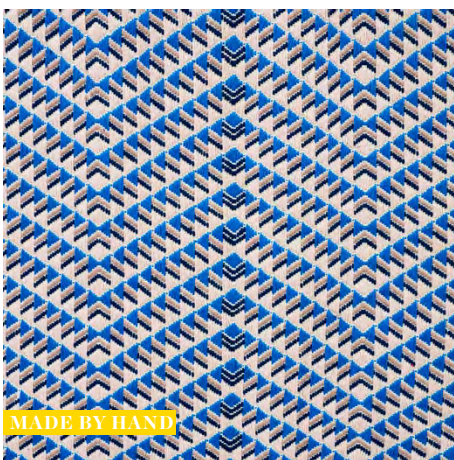
COYOLATE HAND
WOVEN BROCADE
Green 79243
Fabric



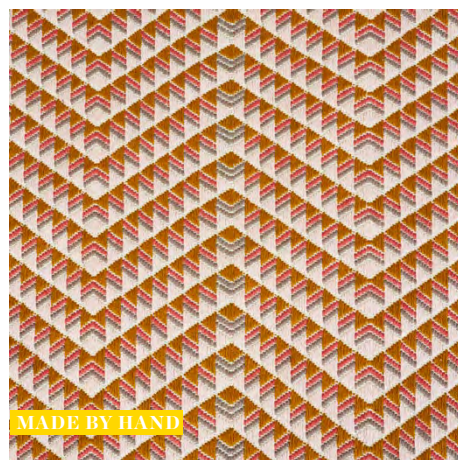
AMATES HAND WOVEN
BROCADE
Carnival 79220
Fabric



AMATES HAND WOVEN
BROCADE
Chalked 79221
Fabric



AMATES HAND WOVEN
BROCADE
Ocean 79222
Fabric



AMATES HAND WOVEN
BROCADE
Mostaza 79223
Fabric



AMATES HAND WOVEN
BROCADE
Duck Egg 79224
Fabric



NICA HAND WOVEN
BROCADE
Rosa 79280
Fabric



CHAHAL HAND WOVEN
BROCADE
Carnival 79230
Fabric



IZAPA HAND
WOVEN BROCADE
Multi 79250
Fabric



IZAPA HAND
WOVEN BROCADE
Jewel 79251
Fabric



KAYA HAND WOVEN
BROCADE
Blue 79260
Fabric



KAYA HAND WOVEN
BROCADE
Mostaza 79261
Fabric



PALOMAR HAND
WOVEN BROCADE
Multi 79290
Fabric



MIXCO HAND WOVEN
BROCADE
Jewel 79270
Fabric





