

# Happy Christmas-Classic

## Sewing Instructions

### Happy Christmas Classic Panel

A traditional Advent calendar for hanging on the wall. Includes an extra Christmas stocking.



#### You will also need:

2m (90cm wide) Vilene Decovil I light, or similar rigid, structure-enhancing interlining.  
130 x 99.5 cm cotton woven  
1 stick or wooden dowel (approx. 1 cm in diameter), 110 cm long

#### For the Christmas stocking you will need:

A small piece of satin ribbon or grosgrain ribbon approx. 15 cm long.



#### Tip:

For this project you will need a large table on which you can comfortably spread out this large piece of fabric while sewing. We recommend perhaps using a dining table instead of your usual sewing table.



@steinbeckwelt\_sewing

#NÄHENMITSTEINBECK





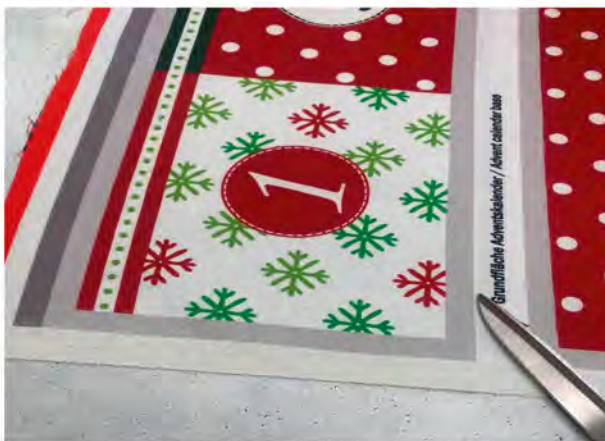


Please read the instructions in their entirety before sewing. Thank you!

While there may be sections in the instructions that experienced sewers will not need, we always want to make sure beginners and advanced sewists are happy with our sewing instructions. So we may go into a little more detail here and there.

Thank you very much for your understanding! Let's go!

## Happy Christmas-Classic with Christmas Stocking



Please note the gray edges around the Advent calendar backing and the compartments pieces, and the additional dark gray stripe along the upper edge.

These gray edges serve as markings. More on this later.



@steinbeckwelt\_sewing

#NÄHENMITSTEINBECK





Please also note that the three rows of compartments were printed slightly offset from one another to better recognize the respective edges.

**Cut all pieces from the panel and include the grey edges.**



Cut the Christmas stocking from the panel.



@steinbeckwelt\_sewing

#NÄHENMITSTEINBECK



## Instructions for sewing the Christmas Stocking



Fold over the top edge of the Christmas stocking pieces no more than the width of your presser foot. Press and edge stitch to finish the upper stocking edges.



Place a small piece of looped satin or grosgrain ribbon for hanging between the two cut pieces pinned right sides together.



@steinbeckwelt\_sewing

#NÄHENMITSTEINBECK







Pin or clip the piece of looped ribbon in place securely.



Stitch around the back, base and front edge of the stocking using a straight stitch. Finish the edges with an overcast stitch.

All done!



@steinbeckwelt\_sewing

#NÄHENMITSTEINBECK



## Wall hanging Advent calendar instructions



Start by preparing the four strips for the pockets.



Repeat each of the following steps for each of the pocket strips:

- 1 - Start.
- 2 - Fold the light grey edge along the bottom toward the fabric wrong side and press.
- 3 - Fold the grey marked edges along the short right and left edges toward the fabric wrong side and press.
- 4 - Fold the dark grey edge along the top toward the fabric wrong side and press. Fold the light grey stripe along the top edge toward the fabric wrong side and press, concealing the dark grey stripe.



@steinbeckwelt\_sewing

#NÄHENMITSTEINBECK







5 - At this point, your work will look like this.

6 - From the back.

7 - Close-up view of the back

8 - Edge stitch the top edge.



We recommend using matching thread.



@steinbeckwelt\_sewing

#NÄHENMITSTEINBECK





Now arrange the four rows evenly and sequentially on the front of the advent calendar as you like.

You may secure the individual rows to the backing with wash-away basting tape or pins.

Stitch the **right and left sides and the bottom** of the individual rows to the backing using a straight stitch.

Again, choose a matching sewing thread.

**Be sure not to stitch the top edges of the pockets to the backing.**



Create individual pockets by stitching a straight line directly along the dividing line.

We recommend topstitching the individual pockets **from the bottom pocket edge up toward the open edge of the compartment.**

In this way, no fabric is "pushed" to the bottom edge and this prevents little bulges from appearing. Secure your stitching lines with a few backstitches.

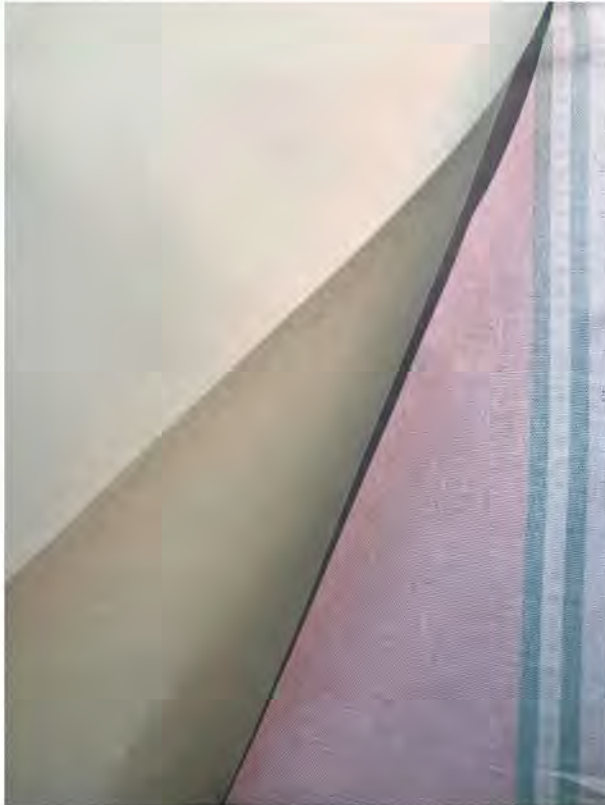


@steinbeckwelt\_sewing

#NÄHENMITSTEINBECK





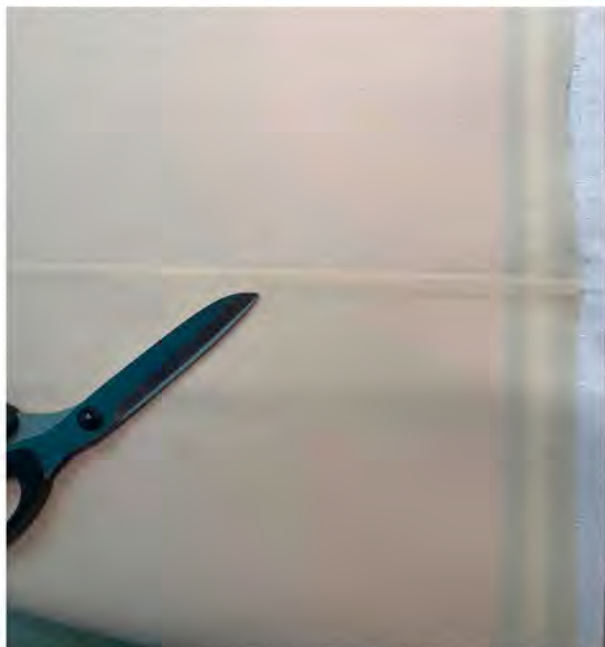


At this point, you will need a piece of Decovil light / fusible interfacing to fuse onto the back of the main part of the Advent calendar.

How to determine the correct size:

Place the Advent calendar in front of you, wrong side up, and **measure the size and subtract 1 cm for the seam allowance from edge edge**. The interfacing will be 1 cm smaller along each edge than the main part of the Advent calendar.

From the 2 meters of Decovil light (90cm wide), cut two pieces that together have this size when overlapped by about 5 mm (see next figure).



Fuse the interfacing to the calendar backing per the manufacturer's instructions and allow it to cool completely.

For Decovil light: Place the interfacing with the coated side on the wrong side of the fabric. Then cover with a damp cloth and press the iron carefully for about 6 seconds, step by step each area. Allow the pieces to cool flat for about 30 minutes, so that the adhesive can set properly.

Your work should look somewhat like this at this point. The scissors indicate where the two pieces of interfacing were overlapped prior to fusing.



@steinbeckwelt\_sewing

#NÄHENMITSTEINBECK





Next, cut the back piece of your Advent calendar. You may use a cotton poplin woven, quilting cotton, linen, canvas or other woven fabric of your choice here. Use the Advent calendar piece as a pattern piece to determine the exact size.

Secure the Advent calendar front to the back with straight pins or clips fabric right sides together.

Stitch the two pieces together with a straight stitch with the seam allowance the width of your presser foot. Leave an opening along the top edge for turning.

Trim the four corners for a smooth turn.

Now turn the calendar through the opening right side out. Use a point turner or large knitting needle for the corners. Press the encased seams and the edge of the opening toward the inside. Close the opening with a straight stitch



Fold over the top edge of the calendar for the dowel casing and press.

Stitch the **casing** using a straight stitch and secure your stitching line with a few backstitches.

Insert a wooden dowel and hang your calendar using cord or sturdy ribbon..

Hang the stocking from one end of the dowel as desired.

Should you have any questions, please reach out to us at [steinbeck@email.de](mailto:steinbeck@email.de)

We hope you enjoy sewing this  
Advent calendar!



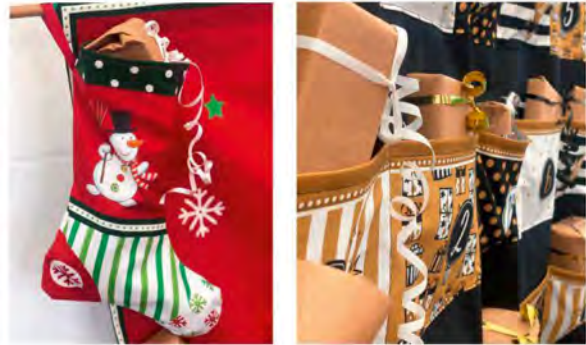
@steinbeckwelt\_sewing

#NÄHENMITSTEINBECK





## Inspirations Beispiele



@steinbeckwelt\_sewing

#NÄHENMITSTEINBECK

