

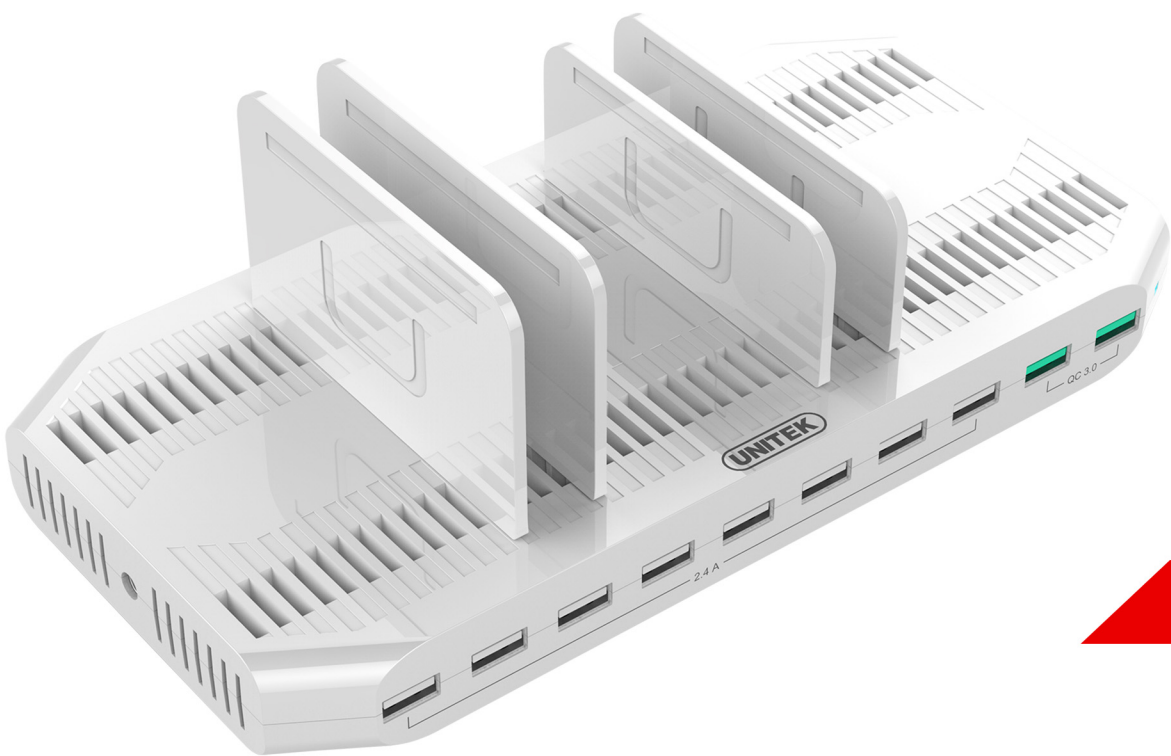


96W 10-Port USB Smart Charging Station (with 2-Port QC3.0)



8 x 2.4A Charging Port

2 x QC3.0 Charging Port


Y-2190A

Features

- Rapid charging with BC1.2 technology, power output up to 2.4A.
- Innovative design for space saving, put your devices on top of charging station when charging.
- The adjustable separator allows you to adjust the width needed for different devices.
- Protection against over-charging, over-voltage, over-heating and short circuit.
- Solid and stable base, it can support up to 10 devices.
- 2 charging ports with Qualcomm® Quick Charge 3.0, which allows certain Qualcomm® Snapdragon™ based devices charge up to 4 times faster than devices that use conventional charging methods.
- Qualcomm® Quick Charge 3.0 is backward compatible with Quick Charge 2.0.

Specifications

Product Dimension	238mm x 118mm x 26mm
Color	White
Downstream	10 x USB Type-A Female
Power	12V8A / 96W
Power Cable	1M
DC Dimension	3.5mm x 1.35mm

Package Contents


WWW.UNITEK-PRODUCTS.COM


: UNITEK OFFICIAL



: UNITEK HK



: UNITEK-INTERNATIONAL-GROUP-LIMITED