

LAURENTIDE

DELIVERING PERFORMANCE &
PROTECTION TO THE WORKPLACE

WWW.PROJOB-WORKWEAR.COM





DELIVERING PROTECTION
AND PERFORMANCE
TO THE WORKPLACE

SINCE
1935

LAURENTIDE

CONTENTS

LAURENTIDE GLOVES LTD

GENERAL USE	4
DRIVER & ROPER	14
WINTER GLOVES & MITTS	16
LINER & FISHING TYPE	18
LINEMAN	20
WELDING	23
MECHANICAL	25
DIPPED & CHEMICAL	26
HEADWEAR	29
SLEEVES & APRONS	32
RAINWEAR	34



GENERAL USE

LAURENTIDE



05034 COWHIDE 4" CUFF GLOVES

Cowhide leather hand - Gunn cut - Weltd finger tips - Fully weltd wing thumb - 4" stiff split leather cuff - Pulse protector - Cotton binding.

Shell: 100% leather
Natural/natural
0/S
Sold by the dozen



05259 COWHIDE LONG CUFF GLOVES

Cowhide leather hand- palm min 1.2 mm - back min 1.0 mm - Gunn cut - Weltd outside seams fingers - Kevlar thread - Wing thumb - 4 1/2" stiff split leather cuff - Pulse protector.

Shell: 100% leather
Natural/natural
9-12

12 PACK



05054 SPLIT-LEATHER BACK 4" CUFF GLOVES

Cowhide leather palm - thumb and index - Split back and cuff - Gunn cut - Weltd inside seams fingers - Wing thumb - 4" stiff split leather cuff - Pulse protector - Cotton binding.

Shell: 100% leather
Natural/natural
0/S
Sold by the dozen



05052 COWHIDE 2" CUFF GLOVES

Cowhide leather palm - thumb and index - Split leather back - Gunn cut - Inside seams fingers - Wing thumb - 2" stiff split leather cuff - Pulse protector - Cotton binding.

Shell: 100% leather
Natural/natural
M, L
Sold by the dozen



03256

DEERSKIN PATCH PALM GLOVES

Deerskin leather/cotton gloves - 2 Piece leather palm with patch - Solid cotton back and cuff - Leather knuckle strap and fingertips - Wing thumb - 2 1/2" Rubberized safety cuff - Inside sewn elastic - Lined palm and thumb.

Shell: 60% leather/40% cotton. Palm lining: 100% cotton
White/brown
O/S
Sold by the dozen



03023

4" CUFF COWHIDE/COTTON GLOVES

Cowhide leather/cotton gloves - Solid cotton back and cuff - Leather knuckle strap and fingertips - Gunn cut - Wing thumb - 4" Rubberized safety cuff - Inside elastic on back of wrist - Lined palm and thumb.

Shell: 60% leather/40% cotton. Palm lining: 100% cotton
White/grey
O/S
Sold by the dozen



03067

LINED PALM COWHIDE/COTTON GLOVES

Cowhide leather/cotton gloves - Solid cotton back and cuff - Leather knuckle strap and fingertips - Gunn cut - Wing thumb - 2 1/2" pasted safety cuff - Inside elastic on back of wrist - Lined palm and thumb.

Shell: 60% leather/40% cotton. Palm lining: 100% polyester
White/grey
M, L
Sold by the dozen



03067

UNLINED COWHIDE/COTTON GLOVES

Cowhide leather/cotton gloves - Solid cotton back and cuff - Leather knuckle strap and fingertips - Gunn cut - Wing thumb - 2 1/2" pasted safety cuff - Inside elastic on back of wrist - Unlined.

Shell: 60% leather/40% cotton
Natural/stripped cotton
S, XL, XXL
Sold by the dozen



03062

OUTSIDE ELASTIC LINED PALM COWHIDE/ COTTON GLOVES

Cowhide leather/cotton gloves - Solid cotton back and cuff -
Leather knuckle strap and fingertips - Gunn cut - Wing thumb -
2 1/2" Pasted cuff - Outside elastic on back of wrist - Lined palm
and thumb.

Shell: 60% leather/40% cotton. Palm lining: 100% polyester
White/grey
O/S

12 PACK



03056

PATCH PALM OUTSIDE ELASTIC COWHIDE/ COTTON GLOVES

Cowhide leather/cotton gloves - 2 Piece leather patch palm -
Solid cotton back and cuff - Leather knuckle strap and fingertips
- Gunn cut - Wing thumb - Outside elastic on back of wrist - 2 1/2"
PE safety cuff - Lined palm & thumb.

Shell: 60% leather/40% cotton. Palm lining: 100% cotton
White/grey
O/S

12 PACK



03129

ELASTIC WRIST LINED PALM GLOVES

Cowhide leather/cotton gloves - Solid cotton back - Leather
knuckle strap and fingertips - Elastic knit wrist - Gunn cut -
Wing thumb - Lined palm and thumb.

Shell: 60% leather/40% cotton. Palm lining: 100% cotton
White/grey
O/S
Sold by the dozen



03010

LADIES COWHIDE/COTTON GLOVES

Cowhide leather/cotton gloves - Solid cotton back and cuff -
Leather knuckle strap and fingertips - Gunn cut - Wing thumb
- 2 1/2" pasted cuff - Inside elastic on back of wrist - Lined palm
& thumb.

Shell: 60% leather/40% cotton. Palm lining: 100% polyester
Beige/grey
O/S
Sold by the dozen

WOMEN



03116

SLIP-ON INSULATED GLOVES

Short cuff cowhide/cotton gloves - Solid cotton back and cuff
 - Leather knuckle strap and fingertips - Gunn cut - Wing thumb -
 Inside elastic on back of wrist - Polyester lining and filling.

Shell: 60% leather/40% cotton. Lining: 100% polyester.
 Filling: 100% polyester.
 White/navy
 L, XL
 Sold by the dozen



03116

SLIP-ON INSULATED GLOVES

Short cuff cowhide/cotton gloves - Cotton back and cuff - Leather
 knuckle strap and fingertips - Gunn cut - Wing thumb - Inside
 elastic on back of wrist - Polyester lining and filling.

Shell: 60% leather/40% cotton. Lining: 100% polyester.
 Filling: 100% polyester
 Natural/stripped colors
 M, XXL
 Sold by the dozen



03089

PILE LINED COWHIDE/COTTON GLOVES

Cowhide leather/cotton gloves - Solid back and matching cuff
 - Leather knuckle strap and fingertips - Gunn cut - Wing thumb -
 Inside elastic on back of wrist - Full acrylic pile lining.

Shell: 60% leather/40% cotton. Lining: 100% acrylic
 White/navy
 M-XXL
 Sold by the dozen



03999

FOAM INSULATED COWHIDE/COTTON GLOVES

Cowhide canadian rigger work gloves - Solid cotton back and cuff
 - Leather knuckle straps and fingertips - Gunn cut - Wing thumb
 - Inside elastic on back of hand - Rubberized safety cuff - Full
 sock 5mm sponge lined.

Shell: 60% leather/40% cotton. Lining: 100% polyester
 White/navy
 O/S
 Sold by the dozen



03019

FLEECE LINED COWHIDE/COTTON GLOVES

Cowhide leather/cotton gloves - Cotton back and cuff - Leather knuckle strap and fingertips - Gunn cut - Wing thumb - Inside elastic on back of hand - 2 1/2" rubberized safety cuff - Full cotton fleece lining.

Shell: 60% leather/40% cotton. Lining: 100% cotton
Beige/striped back
L, XL
Sold by the dozen



03017

FLEECE LINED COWHIDE/COTTON GLOVES

Cowhide leather work gloves - Cotton back and cuff - Leather knuckle strap and fingertips - Gunn cut - Wing thumb - Inside elastic on back of hand - 2 1/2" rubberized safety cuff - Full cotton fleece lining.

Shell: 60% leather/40% cotton. Lining: 100% cotton
White/navy
L, XL
Sold by the dozen



03119

ELASTIC WRIST INSULATED GLOVES

Cowhide leather work gloves - Solid cotton back - Leather knuckle strap and fingertips - Gunn cut - wing thumb - Large elastic knit wrist - Full cotton fleece lining.

Shell: 60% leather/40% cotton. Lining: 100% cotton
White/navy
O/S
Sold by the dozen



03036

LADIES COTTON BACK COWHIDE GLOVES WITH SAFETY CUFF, AND FULL FLEECE LINING

Cowhide leather/cotton gloves - Solid cotton back and cuff - Leather knuckle strap and fingertips - Gunn cut - Wing thumb - 2 1/2" pasted cuff - Inside elastic on back of wrist - Full cotton fleece lining.

Shell: 60% leather/40% cotton. Lining: 100% cotton
White/navy
O/S
Sold by the dozen

WOMEN



F3W08

HIGH VISIBILITY BAND COWHIDE PALM GLOVES

Cowhide leather palm work gloves - High visibility orange nylon back and cuff - Yellow reflective material with grey reflective material knuckle strap - Inside sewn elastic at wrist - Fleece lined palm - 2 -1/2" Safety cuff with red cotton binding.

Shell: 60% leather/40% nylon. Palm lining: 100% polyester
Natural/yellow/orange
O/S
Sold by the dozen



03033

GREY/GREEN/ STRIPPED COTTON

Split leather/cotton gloves - Green patch palm, covering portion of thumb and index - Leather knuckle strap and fingertips - Gunn cut - Wing thumb - Inside elastic on back of hand - 2 1/2" rubberized cuff - Lined palm and thumb.

Shell: 60% leather/40% cotton. Lining: 100% polyester
Grey/green/ striped cotton
O/S
Sold by the dozen



03032

PATCH PALM SPLIT LEATHER/COTTON GLOVES

Split leather/cotton gloves - Patch palm covering portion of thumb and index - Leather knuckle strap and fingertips - Gunn cut - Wing thumb - Outside elastic on back of hand - Pasted cuff - Lined palm and thumb.

Shell: 60% leather/40% cotton. Lining: 100% polyester
Grey/striped cotton
O/S
Sold by the dozen



03034

RUBBER CUFF SPLIT LEATHER/COTTON GLOVES

Split leather/cotton gloves - Cotton back and cuff - Leather knuckle strap and fingertips - Gunn cut - Wing thumb - Inside elastic on back of hand - 2 1/2" rubberized safety cuff - Fleece lined palm and thumb.

Shell: 60% leather/40% cotton. Lining: 100% polyester
Grey/striped cotton
O/S
Sold by the dozen



03003

LINED PALM SPLIT/COTTON GLOVES

Split leather/cotton gloves - Cotton back and cuff - Leather knuckle strap and fingertips - Gunn cut - Wing thumb - Inside elastic on back of hand - Light PE 2 1/2" cuff - Fleece lined palm and thumb.

Shell: 60% leather/40% cotton. Lining: 100% polyester
Grey/ stripped cotton
O/S

12 PACK



03040

KNIT WRIST COTTON/SPLIT LEATHER GLOVES

Split leather/cotton gloves - Split leather palm, thumb, index & finger tips - Gunn cut - Wing thumb - Heavy cotton twill back and matching knit wrist.

Shell: 50% leather/50% cotton
Grey/beige
O/S

12 PACK



03006

KNIT WRIST COTTON/SPLIT LEATHER GLOVES

Split leather/cotton gloves - Split leather palm and full thumb - Clute cut - Wing thumb - Heavy cotton twill back and matching knit wrist.

Shell: 60% cotton/40% leather
Grey/beige
O/S

12 PACK



03041

AQUASTOP & THINSULATE SPLIT LEATHER/COTTON GLOVES

Split leather/cotton gloves - Solid cotton back and cuff - Leather knuckle strap and fingertips - Gunn cut - Wing thumb - Inside elastic on back of hand - Thinsulate C100 insulated - Aquastop insert.

Shell: 60% leather/40% cotton. Lining: 100% polyester.
Membrane: 100% polyurethane. Filling: 65% polyolefin/35% polyester
Yellow/yellow
O/S

Sold by the dozen



03047

FOAM FLEECE INSULATED SPLIT LEATHER/COTTON GLOVES

Split leather/cotton gloves - Solid cotton back and cuff - Leather knuckle strap and fingertips - Gunn cut - Wing thumb - Adjustable strap on back of hand - Foam lining.

Shell: 60% leather/40% cotton. Lining: 100% polyester
Yellow/yellow
O/S
Sold by the dozen



03048

PILE LINED SPLIT LEATHER/COTTON GLOVES

Split leather/cotton gloves - Solid cotton back and cuff - Leather knuckle strap and fingertips - Gunn cut - Wing thumb - 2 1/2" rubberized cuff - Inside elastic on back of hand - Full sock type boa lining with.

Shell: 60% leather/40% cotton. Lining: 100% acrylic
Yellow/yellow
O/S
Sold by the dozen

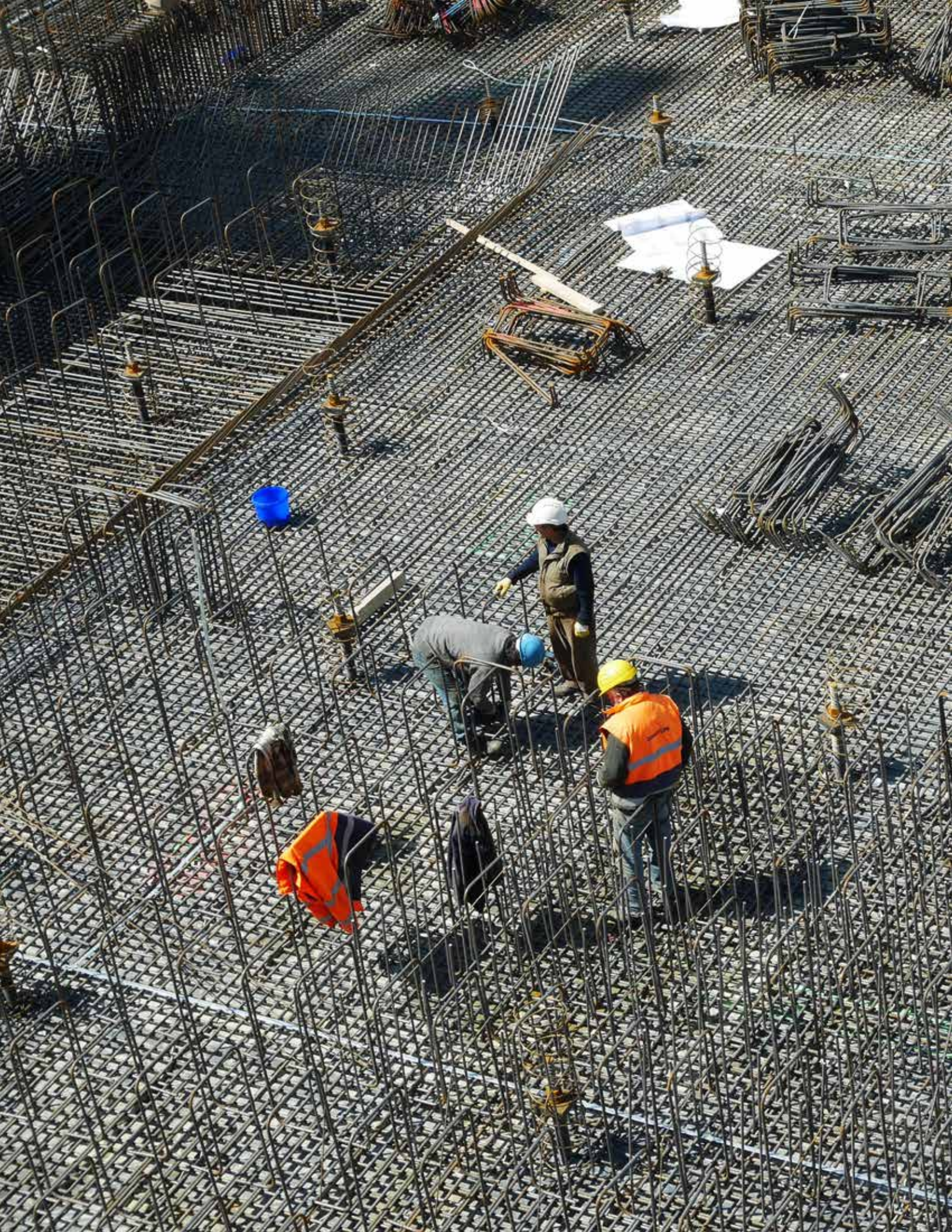


03004

PIG GRAIN LEATHER/COTTON GLOVES

Pig grain leather/cotton gloves - Cotton back and cuff - Leather knuckle strap and fingertips - Gunn cut - Wing thumb - Inside elastic at back of hand - Pasted safety cuff.

Shell: 60% leather/40% cotton
Beige/stripped cotton
O/S
Sold by the dozen





DRIVER & ROPER

LAURENTIDE



05237

DEERSKIN DRIVER GLOVES

Yukon gold deerskin driver style gloves - Gunn cut - Straight thumb - 2 Needle shirred elastic back - Cotton binding.

Shell: 100% leather
Gold
S-XL
Sold by the dozen



05037

UNLINED BUFFALO DRIVERS

Cowhide leather driver style gloves made from 3 pieces of leather- Gunn cut - Keystone thumb with double stitching - Cotton binding.

Shell: 100% leather
White
S-XXL
Sold by the dozen



05027

UNLINED ROPER STYLE GLOVES

Cowhide roper style gloves - Clute cut palm - Keystone double stitched thumb - Strap & metal snap at wrist - Unlined.

Shell: 100% leather
White
S-XL
Sold by the dozen



05038

FLEECE LINED BUFFALO DRIVERS

Cowhide leather driver style gloves made from 3 pieces of leather- Gunn cut - Keystone thumb with double stitching - Polyester lining - Cotton binding.

Shell: 100% leather. Lining: 100% polyester
White
S-XXL
Sold by the dozen



05555

INSULATED DEERSKIN GLOVES

Deerskin winterized driver gloves - in-seam with applied double stitched palm piece - Black polyester fleece lining - laminated foam insulation.

Shell: 100% leather. Lining: 100% polyester. Filling: 100% polyester
Black
S-XXL



WINTER GLOVES AND MITTS

LAURENTIDE



03491

WATERPROOF GLOVES WITH FULL TR2+40 THINSULATE

Waterproof Cowhide leather gloves - 3" cuff rubber on cotton Stedfast Black Diamond with nylon storm cuff - Patch palm sewn with 4 rows of stitching - Full C40 3M Thinsulate lining with Aquastop breathable insert.

Shell: 100% leather, cuff coated 100% cotton/rubber.
Lining: 100% polyester. Membrane: 100% polyurethane.
Filling: 65% polyolefin/35% polyester
Beige/black cuff
L-XL
Sold by the dozen



05190

C40 INSULATED GLOVES

Gloves cowhide leather palm, thumb and fingers - Waterproof black neoprene back and half thumb - Keystone thumb - Nylon lycra fourchettes - Elastic back - Thinsulate C40 lining - Black cotton binding.

Shell: 60% leather/40% neoprene. Lining: 100% polyester
White/black
XL-XXL
Sold by the dozen



05108

PILE LINED COWHIDE MITTS

Cowhide leather work mitt - Black polyester/lycra back and half thumb - Full boa lining - Elastic at wrist - Cotton binding.

Shell: 60% leather/40% polyester. Lining: 100% acrylic
Beige/black
XL-XXL
Sold by the dozen



05109

PULLOVER MITT WITH REMOVABLE PILE LINING

Cowhide leather mitt with removable liner of acrylic pile - Attached with plastic hook.

Shell: 100% leather. Lining: 100% acrylic
Beige
L-XL
Sold by the dozen



05106

KNIT WRIST INSULATED MITTS

Cowhide leather work mitt - Inseam sewn - Straight thumb - 2" Elastic wrist - Lined with 6mm red foam full sewn.

Shell: 100% leather. Lining: 100% polyester.
Filling: 100% polyurethane
White/black
O/S
Sold by the dozen



05090

COWHIDE COVER MITT

Cowhide grain pullover work mitt - Wing thumb - Elastic at wrist - Fully welted with brown binding.

Shell: 100% leather
Beige
O/S
Sold by the dozen



LINER & FISHING TYPE

LAURENTIDE



00020 BRUSHED KNIT MITTS

Brushed acrylic knit mitts with double knit cuff.

Shell: 100% acrylic
Beige
0/S
Sold by the dozen



00021

BRUSHED KNIT 3 FINGER GLOVES

Brushed acrylic knit 3-finger mitts with double knit cuff.

Shell: 100% acrylic
Beige
O/S

12 PACK



00022

BRUSHED KNIT GLOVES

Brushed acrylic knit gloves with double knit cuff.

Shell: 100% acrylic
Beige
O/S

12 PACK



00004

JERSEY KNIT LINED GLOVES

9 ounce lined jersey slip-on-style gloves, clute cut, wing thumb.

Shell: 100% cotton
Brown
O/S
Sold by the dozen



00059

KNITTED FISHERMAN STYLE GLOVES

White bleached fisherman style gloves.

Shell: 70% polyester/30% cotton
White
O/S

12 PACK



LINEMAN

LAURENTIDE



F5456

5" CUFF LINEMAN GLOVES

Cowhide leather lineman gloves - Welt protected outside seams - Gunn cut - Wing thumb - Patch palm sewn with 4 rows of stitching - Shirred elastic back - 5" Split leather stiff cuff with inner lining - Gusset and cuff protector - Cotton binding - Lime yellow reflective tape on cuff - All sewn with Kevlar thread.

Shell: 100% leather
Natural/light grey
S-XL
Sold by the dozen



F5464

5" CUFF 3 FINGER LINEMAN GLOVES

Cowhide leather 3 finger lineman gloves - Welt protected inside seams - Wing thumb - Patch palm sewn with 4 rows of stitching - Shirred elastic back - 5" Split leather stiff cuff with inner lining - Gusset & cuff protector - Cotton binding - Lime yellow reflective tape on cuff - All sewn with Kevlar thread.

Shell: 100% leather
Natural/light grey
S-XL
Sold by the dozen



W5452

WR 3" CUFF LINEMAN GLOVES

Water repellent cowhide leather lineman gloves - Welt protected outside seams - Gunn cut - Wing thumb - Patch palm sewn with 4 rows of stitching - Shirred elastic back - 3" Split leather stiff cuff with inner lining - Gusset and cuff protector - Cotton binding - White reflective tape on cuff - All sewn with Kevlar thread.

Shell: 100% leather
Brown
S, M, XL
Sold by the dozen



F5452

3" CUFF LINEMAN GLOVES

Cowhide leather lineman gloves - Welt protected outside seams - Gunn cut - Wing thumb - Patch palm sewn with 4 rows of stitching - Shirred elastic back - 3" Split leather stiff cuff with inner lining - Gusset and cuff protector - Cotton binding - Lime yellow reflective tape on cuff - All sewn with Kevlar thread.

Shell: 100% leather
Natural/light grey
S-XL
Sold by the dozen



F5457

5" CUFF FOAM INSULATED LINEMAN GLOVES

Cowhide leather lineman gloves - Welt protected outside seams - Gunn cut - Wing thumb - Patch palm sewn with 4 rows of stitching - Shirred elastic back - 5" Split leather stiff cuff with inner lining - Gusset and cuff protector - Cotton binding - Lime yellow reflective tape on cuff - All sewn with Kevlar thread - Foam lined.

Shell: 100% leather. Lining: 100% polyester. Filling: 100% polyurethane
White
S-XXL
Sold by the dozen



45840

EXTREME COLD LINEMAN GLOVES

Winterized lineman gloves for extreme cold weather - Gunn cut - Wing thumb with protective strap - Inside seams - 8" strap on back of hand with nylon buckle - 5" cuff - Full outside neon yellow cuff - Thinsulate and Prorelle lining.

Shell: 100% leather. Lining: 100% cotton.

Membrane: 100% polyurethane. Filling: 65% polyolefin/35% polyester

Cream

S-XL

6 PACK



45850

EXTREME COLD 3 FINGER LINEMAN GLOVES

Winterized 3-finger lineman gloves for extreme cold weather - Wing thumb with protective strap - Inside seams - 8" strap on back of hand with nylon buckle - 5" cuff - Full outside neon yellow cuff - Thinsulate and Prorelle lining.

Shell: 100% leather. Lining: 100% cotton.

Membrane: 100% polyurethane. Filling: 65% polyolefin/35% polyester

Cream

S-XL

6 PACK



WELDING

LAURENTIDE



05012

DOUBLE SPLIT BACK, DEERSKIN WELDING GLOVES

Deerskin grain leather palm welding gloves- Double layer split back of hands - Straight thumb with protective strap - Half moon cuff protector - Inside sewn with Kevlar thread - 4 1/2" split leather stiff cuff.

Shell: 100% leather
Cork
M-XL
Sold by the dozen



05112

SPLIT BACK DEERSKIN PALM WELDING GLOVES

Deerskin grainleather palm welding gloves - Split leather back - Straight thumb with protective strap - Half moon protector - Inside sewn with Kevlar thread - 4 1/2" split leather stiff cuff.

Shell: 100% leather
Beige
S-XL
Sold by the dozen



04174 PIPELINE GLOVES

Deerskin split leather welding gloves - Clute cut - Straight thumb with thumb protective strap - All sewn with Kevlar thread - 5" split leather cuff.

Shell: 100% leather
Golden yellow/natural
S-XL
Sold by the dozen



14175 WELDING GLOVES

Welding gloves - Hand of deerskin split leather 1.0-1.2 mm - Cuff made of stiff cow split leather 1.0-1.4 mm - 3" Kevlar knit at end of cuff - 100% Kevlar thread - Palm made of heavy weight melton - Back of hand and thumb made of 12oz cotton - Cotton binding.

Shell: 90% leather/10% Kevlar. Lining: 40% 24oz melton (75% wool/25% nylon)/60% cotton
Golden yellow/grey
O/S
Sold by the dozen



04069 2 TONE SPLIT LEATHER LINED WELDING GLOVES

2 color 14" split leather welding gloves - Gunn cut - Straight thumb with protective strap - Fully welted - One piece back - Cotton fleece lining with cotton innercuff - All sewn with Kevlar thread.

Shell: 100% leather. Lining: 100% cotton
Light grey/blue
O/S
Sold by the dozen



04029 SPLIT LEATHER LINED WELDING GLOVES

14" flexible split leather welding gloves - Gunn cut - Wing thumb - Fully welted palm - One piece back - Cotton fleece lining with cotton innercuff.

Shell: 100% leather. Lining: 100% cotton
Grey
O/S
Sold by the dozen



MECHANICAL

LAURENTIDE



VI800

OIL & GAS HANDLING GLOVES

Oil & gas handling gloves - Synthetic leather palm - PVC grip palm patch - TPR on knuckles, fingers and thumbs - Spandex fabric laminated with 100% polyester fabric back of hand - Synthetic leather fourchettes - Aramid thumb crotch - Spandex cuff and synthetic leather pull tab.

Shell: 70% synthetic leather/30% spandex
Multi
L-XXL
Sold by the dozen



DIPPED & CHEMICAL

LAURENTIDE



01009 CUT LEVEL 5 DIPPED GLOVES

Seamless 13-Gauge high pressure polyethylene fiber gloves - Nitrile coated palm and fingertips - Sandy finish - ANSI Cut level 5 - Elastic knit wrist.

Shell: 100% polyethylene. Coating: 100% nitrile
Black/orange
M-XXL
Sold by the dozen



01075 DYNEEMA NITRILE DIPPED GLOVES

Seamless 13-Gauge mixed fibers and dyneema gloves - Nitrile coated palm and fingertips - Sandy finish - Elastic knit wrist.

Shell: 100% nylon. Coating: 100% nitrile
Black/ grey
10, 11
Sold by the dozen



01080

PU DIPPED DYNEEMA GLOVES

Seamless 13-Gauge dyneema gloves - PU coated palm and fingertips - Elastic knit wrist.

Shell: 100% nylon. Coating: PU
Grey
9 - 11
Sold by the dozen



01069

LATEX DIPPED HEAVY WEIGHT KNIT GLOVES

Seamless heavy weight knitted gloves - Latex coated palm and fingertips - Elastic knit wrist.

Shell: 100% polyester. Coating: 100% latex
Black
S - XL
Sold by the dozen



01068

LATEX DIPPED ON POLYESTER KNIT GLOVES

Seamless 10-Gauge polyester knit gloves - Latex coated palm and fingertips - Elastic knit wrist.

Shell: 100% polyester. Coating: 100% latex
Blue/yellow
8 - 10

12 PACK



01070

NITRILE DIPPED ON NYLON KNIT GLOVES

Seamless 13-Gauge nylon knit gloves - Smooth nitrile coated palm and fingertips - Elastic knit wrist.

Shell: 100% nylon. Coating: 100% nitrile
White/grey
7 - 11

12 PACK



01657

NITRILE COATED GLOVES

Nitrile dipped gloves - Jersey lining - Safety cuff smooth finish.

Shell: 100% nitrile. Lining: 100% cotton
Blue
8 - 10
Sold by the dozen



01031

11" PVC GLOVES

PVC coated gloves - Cotton interlock lining.

PVC coated gloves - Cotton interlock lining
Red
0/S
Sold by the dozen



01061

PVC KNIT WRIST FOAM LINED GLOVES

PVC dipped gloves - Foam lining - Sandy finish - Wide elastic knit wrist.

Shell: PVC. Lining: polyester. Filling: 100% polyurethane
Orange
0/S
Sold by the dozen



01189

PILE LINED NITRILE GLOVES

Nitrile coated gloves - Full sock pile lining - Elastic sewn inside - Full sock boa lining - Drawstring cord lock.

Shell: 100% nitrile. Lining: 100% acrylic
Black/yellow
XL,XXL
Sold by the dozen



HEADWEAR

LAURENTIDE



H3L42 SAFETY HAT WINTER LINER

Heavy wool/nylon melton safety hat winter liner - Elastic at the neck with button fastener - Vinyl band with holes for safety hat insert.

Shell: 100% oz. melton wool. Lining: 100% cotton
Black
O/S
Sold by the dozen



3L39A ARTIC WINTER LINER WITH REMOVABLE MASK

Safety winter hat liner - Removable mask with velcro - Elastic band at the back of the head - Elastic band with velcro at neck - 3 attachment points for helmet - Quilted kasha cotton lining.

Shell: 100% cotton. Lining: 100% cotton
Black
O/S

12 PACK



3L43A

WINTER HAT LINER WITH ZIPPER

Safety winter hat liner - Zipper over the ears - Elastic band with velcro at neck - 3 attachment points for helmet - Quilted kasha cotton lining.

Shell: 100% cotton. Lining: 100% cotton
Black
O/S

12 PACK



3L33A

WINTER HAT LINER

Safety winter hat liner - Elastic band at the back of the head - Elastic band with velcro at neck - 3 attachment points for helmet - Quilted kasha cotton lining.

Shell: 100% FR cotton. Lining: 100% cotton
Black
O/S

12 PACK



3L28A

WINTER HAT LINER

Safety winter hat liner - Elastic band with velcro at neck - 3 attachment points for helmet - Quilted kasha cotton lining.

Shell: 100% FR cotton. Lining: 100% cotton
Black
O/S

12 PACK



3L15A

ACRYLIC WINTER LINER

Acrylic knit safety hat Liner.

Shell: 100% acrylic
Red
O/S
Sold by the dozen



3L07A

KNITTED ACRYLIC HAT LINER 6X7'

Acrylic knit 6" long ear protection for hat liner.

Shell: 100% acrylic
Blue, black, red
O/S

12 PACK



TB30M

WELDING HAT

7 ounce fire retardant cotton welding hat - Longer in the back covering the base of the neck.

Shell: 100% FR cotton
Black
O/S

12 PACK



TP30M

WELDING HAT

9 ounce fire retardant cotton welding hat - Longer in the back covering the base of the neck - Kevlar thread.

Shell: 100% FR cotton
Navy
O/S
Sold by the dozen



SLEEVES & APRONS

LAURENTIDE



CH460

18" SLEEVES POLYURETHANE COATED NYLON

18" sleeve protection of polyurethane coated nylon - Elastic band on each end.

Shell: 70% polyurethane/30% nylon
yellow
O/S
Sold by the dozen



CM460

18" FR NEOPRENE SLEEVES

18" sleeve protection of FR neoprene - Elastic band on each end.

Shell: 100% polychloroprene
yellow
O/S
Sold by the dozen



CM462

18" FR NEOPRENE SLEEVES WIDER ARM

18" sleeve protection of FR neoprene - Elastic band on each end - 2" wider at top of arm.

Shell: 100% polychloroprene
yellow
O/S
Sold by the dozen



EL117

CLEAR BLUE

36"x48" vinyl apron.

Shell: 100% vinyl
Clear blue
O/S
Sold by the dozen



EB92M

DENIM APRON

26"x36" denim apron - Front pocket.

Shell: 100% cotton
Navy
O/S
Sold by the dozen



RAINWEAR

LAURENTIDE



FR853

**F.R. PVC/POLYESTER/
PVC SUIT**

FR rain suit in PVC polyester coated.

Shell: 70% polyurethane/30% polyester
Yellow
S-4XL
Sold by the dozen

FR85C

**F.R. PVC/POLYESTER/
PVC COAT**

FR rain jacket in PVC polyester coated.

Shell: 70% polyurethane/30% polyester
Yellow
S-4XL
Sold by the dozen

LP853

**35MM PVC/POLYESTER/
PVC SUITS**

Rain suit in PVC polyester coated.

Shell: 70% polyurethane/30% polyester
Yellow
S-3XL
Sold by the dozen

SHIPPING

- All shipments are made F.O.B. Montreal, QC.
- Unless otherwise instructed, we will ship by the least expensive method available.
- Prepaid shipping is offered orders over \$1500.00 before taxes in all areas that have regular ground service, some exceptions may apply.
- If you do not wish to receive back orders, please indicate «Ship complete when ready» or «Cancel all back orders» on the order form.
- If you do not wish to receive style substitutions, please indicate «No Subs» on the order form.

TERMS AND CONDITIONS

- Prices listed herein are effective January 1st to December 31st 2021.
 - Prices are F.O.B. Montreal, Quebec.
 - Prices do not include applicable taxes.
 - Past due accounts are subject to 1.5% service charge per month (18% per year).
 - Minimum order 150.00\$
 - LAURENTIDE GLOVES LTD reserves the right to modify prices without notice.
 - LAURENTIDE GLOVES LTD will retain title to all goods until purchase price has been paid in full.
- All discounts are subject to payment being made as per the agreed terms. Late payment or order modifications may result in the loss of any applicable discount.

TRANSSHIPPING

- All product sold by LAURENTIDE GLOVES LTD and purchased by a Dealer must be so to sell back to the end user of the Dealer. The Dealer must get approval from LAURENTIDE GLOVES LTD before selling the product to another dealer, retailer, distributor or wholesaler.
- Any Dealer who wants to sell products via any web platform must advise LAURENTIDE GLOVES LTD.

RETURNS

- All returns must be authorized by our Customer Service Department.
- All returns are to be shipped prepaid and the Return Authorization Number must be clearly indicated inside and outside the box.
- Returns are subject to a 15% restocking fee.

CLAIMS AND SHORT SHIPMENTS

Damage or lost shipment:

- Shipments on retailer's account are F.O.B. our warehouse.
- All claims for damaged and/or lost shipments must be made directly to the transport company.
- Prepaid shipments: Claims for damaged and/or lost shipments must be made in writing within 10 days of receipt of merchandise to customer service at admin@projob-workwear.com.
- Claims for shortshipment or mis-shipment must be made in writing within 10 days of receipt of merchandise to Customer Service at admin@projob-workwear.com.

WARRANTY POLICY

- All products in this price list are warranted to be free of defects in workmanship or materials for 1 year from initial date of purchase.
- Proof of purchase from a LAURENTIDE GLOVES LTD authorized dealer is required before processing any claims.
- LAURENTIDE GLOVES LTD reserve the right to make the final determination to repair, replace or credit the defective product. To request a warranty evaluation, please contact your Customer Service Agent at admin@projob-workwear.com.



2315 Cohen, Montreal, QC, Canada, H4R 2N7
T: 514-345-0135 / 1-800-363-2237
admin@projob-workwear.com

GANTS LAURENTIDE LTÉE
www.projob-workwear.com

LAURENTIDE