

# Structured water is the pathway to safe drinking water and nutrient dense food

## Introduction

Water is a unique substance, the most abundant of any substance, and yet the most misunderstood substance. Water is also the most important nutrient for life in a pathway to health and wellbeing. Water in its natural flowing, vortex state in nature (eg. a river, creek or spring) is **structured, negatively charged and energised for life**. However, the water most used by people on Earth is not utilised directly from naturally flowing water systems, and this water is de-structured, mainly positively charged and certainly not in a form to energise life.

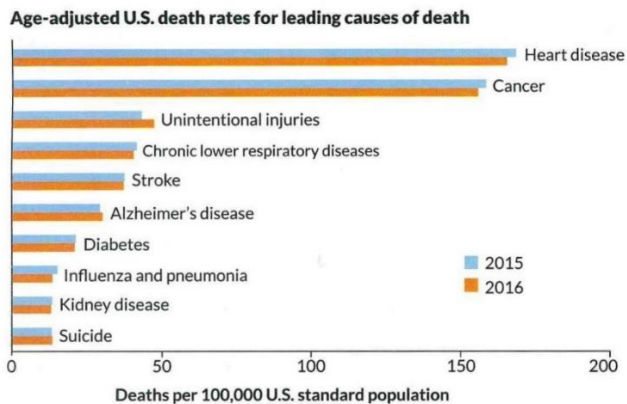
Two major issues that are facing the quality of life on Earth, are:

1. The wide spread use of de-structured water for urban and agricultural use, and the implications this has for aging, dehydration, disease and production of nutrient deficient food (dead food)
2. The corporate (pharmaceutical, chemical and engineering), government and academic vested interests in rejecting the adoption of technologies for re-structuring water. The vested interests in maintaining the status-quo are preventing the adoption of the water re-structuring technologies for waste water treatment, desalinisation, pollution control, and preservation of liquid supplements (eg. homeopathies, probiotics, etc.).

The considerable amount of money invested into orthodox water technologies is blocking new innovations in to structured water technology. It is very clear that protection of academic and corporate theories, dogma about water and water treatment are impeding the discovery of new knowledge, and consequently improving the wellbeing of all living species.

Life expectancy decline trends are being experienced across the USA, other western civilisations (eg. Australia and most of Europe) and China. It is worse in European countries that use fluorination in water (eg. Republic of Ireland compared with Northern Ireland that does not fluorinate water)

Most of these primary diseases, like cardiovascular, cancer, autoimmune and Alzheimer's are triggered by chronic dehydration due to drinking de-structured (dead) water. The cells of humans are losing structural integrity due to the larger water molecule cluster size of de-structured water that is **less permeable** than the small clusters of structured water. However, there are other contributing factors to these diseases, like cell toxicity, environmental and emotional stresses, high processed sugar diets, and the lack of nutrient dense food.



Since about 2002 life expectancy in most modernised countries has been declining due to increases mainly in heart disease, cancer, respiratory diseases, stroke, Alzheimer's disease and diabetes. A primary factor in this decline is the drinking of de-structured, chemically treated water and its use in food production. Consequently, human, animal and plant cells are losing their integrity and cohesion.

This spiral of life-expectancy to lower levels, increases in heart disease and cancer will be sustained while governments subsidise pharmaceutical drugs, pollute drinking water and allow chemical farming or toxic food production. It is an interesting fact that science has reached the point where it recognises that the cell in all species (ie, microbes, plants, animals and humans) is an electric battery, and this battery is being run flat with toxic medications, water and food.

Cells (with their varying rates of vibration) can distinguish between the organs and systems of the human body. Consequently, the human mechanism is a collection of different living batteries. In a healthy body these different rates of vibration are properly synchronized or balanced. The human body is designed as a perfect energy system and are energised by the cosmic or magnetic currents that are present everywhere in the universe.

However, the pharmaceutical and chemical industries have adopted a delusional position that diseases in all living species can be treated and cured with chemistry (ie. synthetic drugs and chemicals). All species have inbuilt self-regulating and self-healing energies and it is only through the vibration and movement of energy that life is sustained at its fullest potential.

*You cannot poison your body **into health** with drugs, chemo or radiation. The holistic approach treats the whole body, ignites the internal healing force and stimulates the body's natural abilities to heal itself. Health can only be achieved with healthful living. T.C.Fry*

## The energy field of cells

All matter on Earth, from cells to the cosmos, is made of energy and it is part of an *Energetic Continuum*: a term used to describe the flow of energies within the Universe. **Tachyon energy** is the starting point of the energetic continuum. Tachyon Energy moves faster than the speed of light, is everywhere at the same time, has no frequency, spin, or gravitation, and is the source of all energies.

Tachyon energy also is referred to as Prana, Chi, Universal Life Force Energies, Aura, among other names. Our bodies are not only sensitive to, but are energetically balanced by, Tachyon

energy. Tachyons have been known for thousands of years when mankind used them in rituals, in past centuries. Scientific knowledge of Tachyon Energy has been known since about the 1950's, but modern physics finally proved its existence in the 1960s. Tachyon Energy is primarily used to harmonise subatomic structures of cells (eg. *an **atom** has at its centre a positively charged nucleus, which is surrounded at some distance by a cloud of negatively charged electrons, held in a series of orbitals by electrostatic attraction to the nucleus. The nucleus in turn consists of **two kinds of subatomic particles**: protons, which are positively charged, and neutrons, which are electrically neutral*).

Tachyon energy was defined by Dr. Gerald Feinberg of MIT in 1966 as a faster-than-light subatomic particle. Since the late 1800's, scientists around the world have been working on free energy devices that use Tachyon. It allegedly strengthens the energetic field which is directly linked to the physical body. It then activates and intensifies the structure of the cells, reminding them of their perfect order.

Nikola Tesla was successful in the creation of a car that ran on an invisible Tachyon energy source. Dr. Henry Moray was also successful in creating energy converters that use this free energy. Today many scientists are working on free energy devices for the conversion of Tachyon energy into electrical energy.

Tachyon energy interacts with the *Subtle Organizing Energy Field* (SOEF). This term describes an energetic theory of nutrition which states that cells are templated on SOEF's. When cells are balanced, organised and functioning at a peak state, the cell is in a state of **syntropy**. On the other hand, when a cell is unbalanced, disorganized and dysfunction it is in a state of **entropy** (ie. decay or aging). Syntropy only occurs when the flow of energy to the cell is in a continuum, or non-interrupted flow. Syntropy is a state of cell coherence or self-regulation and healing (ie. disease prevention).

All cells can achieve a state of coherence through the uninterrupted flow of oxygen, sunlight (all the spectrums of natural light), structured water and fresh, natural (unprocessed) food. However, when these sources are depleted of Tachyon Energy, this can adversely impact the cell function and lead to **dis-ease**.

The cells of all living species are composed of electrical, magnetic, and **Tachyon (subtle) energy**. Therefore, and in the case of **food production**, the cells of plants and animals need a continuous flow of syntropy energy to the cells to sustain the integrity of cell function.

For example, experimental work by Phi'on with food production has demonstrated that the presence of structured water around the root system of plants has many primary effects to sustain **syntropy energy** of the plant:

1. The energy released by the negative charge in structured water activates soil microbes to increase nutrient flow from the air (nitrogen) and soil (minerals) to the root system of the plant

2. Structured water moderates soil temperature around the root system (possibly with dimethyl sulfoxide: DMSO) to sustain a continuum of nutrient flow to the plant. Also, structured water along with soil microbes moderate soil pH, Electrical Conductivity (EC) and oxidation reduction potential (ORP).
3. Once the above functions (1 and 2) are activated the plant senses a stable and cohesive root environment, the plant maximises photosynthesis (sun energy) for plant growth and resilience.

Consequently, the plant is now in a cycle of growth and reproduction. This cycle leads to energy and nutrient flow and nutrient cycling. For example, more carbon (decayed plant materials) is stored in the soil and this carbon becomes a source of nutrients for the plant (ie. plant carbon forms humus, and subsequently the humus breaks down to humic and fulvic acids that are required by plants for sustenance).

Cell reproduction for any species is an energy transformation process. The seed/egg and the pollen/sperm contain the complete energy information to transform into a living species. That is, energy is transformed into matter. Einstein proved scientifically that matter is susceptible of being transformed into energy and that energy can be transformed into matter. That is,  $E=mc^2$ , albeit a seemingly simple algebraic formula, represents the correlation of energy to matter (energy equivalence of any given amount of mass). Many people are unaware of just how much energy is contained within matter. Also, it was known for some time before Einstein's insights that electromagnetic radiation (eg. light) possessed momentum. Therefore, no one would find it surprising nowadays that the human sexual components of the human body (matter), can be transformed into energy as libido/sex drive, love, joy and happiness.

*To own a bit of ground, to scratch it with a hoe, to plant seeds and watch their renewal of life: this is the commonest delight of the race, the most satisfactory thing a man can do. Let us celebrate the soil.*  
Charles Warner, 1870

## Full light spectrum for health cells

Studies, particularly by Dr. John Ott during the 1950-1980's, have shown that the different chloroplasts of plants have different wavelength absorption bands and that the full spectrum of visible light is essential to produce a complete process of photosynthesis. Also, these studies have shown that there could be a definite link between some chronic diseases and a lack of exposure to natural sunlight by humans.

Ott faced considerable opposition to his research and books on the effects of natural life and human health. Academia is strongly linked to pharmaceutical and chemical corporations for research funds and part of the deal between them is that academics will not collaborate with research that is opposed to the focus of the corporations. For example, there is corporate interest in people not getting sunlight, using sunscreen and wearing sunglasses. There is money to be made in sickness and therefore healthy strategies are demonized to seduce people into unhealthy lifestyle strategies.

Ott termed the phrase *biological combustion* to indicate that light is a nutrient, like all the other nutrients we take in through food (including structured water), and that we need the full spectrum range of natural daylight to sustain natural cycles (eg. circadian) and cell function. For example, the pituitary gland which is the master balance wheel of the entire glandular system, receives light through the eyes and stimulates pituitary gland for animals and humans. Hens increase egg production when they receive the full spectrum of light through their eyes. This is not the case with caged hens that have no access to natural light.

John Albright of Environmental Systems (USA) set up studies in which **full spectrum lighting** was installed in henhouses. Almost immediately, **egg production increased 8.5 percent**, the hens produced larger eggs with stronger shells, and the birds began eating less feed. This means that with the increased wavelength spectrum they were receiving, and absorbing increased the nutritive value of their feed, and therefore they would eat less. The chickens in this experiment also escaped a severe outbreak of avian flu which devastated the Pennsylvania (USA) poultry industry in the winter of 1983-84. An important outcome in this study was that the eggs, laid by these birds exposed to natural light, contained 22 percent less cholesterol compounds, since the wavelength absorption of cholesterol is in the ultraviolet range. If chickens and people don't get enough ultraviolet, it may be that the cholesterol level builds up, just as the bilirubin serum does in the absence of blue sunlight (afternoon light). There is also evidence in other studies that show that hens exposed to natural light (eg. free ranging in the sun) have increased Omega 3 and a better balance/ratio of the Omega 3, 6 and 9.

The fundamental requirement for cells in plants, animals and humans to receive the full spectrum of light daily is a fact long since proven by science. For example, in 1967, a paper presented by three Russian scientists to the International Committee on Illumination said: *If human skin is not exposed to solar radiation (direct or scattered) for long periods of time, disturbances will occur in the physiological equilibrium of the human system. The result will be functional disorders of the nervous system and a vitamin-D deficiency, a weakening of the body's defenses, and an aggravation of chronic diseases.*

Ott also coined the term *mal-illumination*. The lack of the necessary amount of sunlight creates a deficiency, just as malnutrition is a lack of the proper nutrients in diets. Mal-illumination occurs when wavelengths are missing in various types of artificial light or are filtered from natural light passing through window glass, windshields, eyeglasses (particularly tinted contact lenses or sunglasses), smog, and even suntan lotions. The minerals and chemicals in the individual cells of our bodies that would normally be metabolised by the missing wavelengths, however in the absence of natural light they remain in the equivalent of *darkness*. Our ancestors spend many hours under the full spectrum of light from sunrise to sunset and given that we are 99% genetically the same as we were 10,000 years ago, our cells still require adequate levels of the full sunlight spectrum on a continuous basis to function with a negative charge. Photons from the full spectrum of light help to charge the cell's mitochondria (*powerhouse*).

There is generally an unnecessary fear of sunlight due to propaganda by corporations to sell sunscreen products, and unfortunately this propaganda has been swallowed by Cancer Councils/Institutes and governments to the point where children at school are being denied full sunlight exposure; and forced to wear sunscreen. Research studies in the 1970's demonstrated that children who had adequate exposure to natural sunlight or as natural internal light (during the day and in the classroom) were less disruptive in classrooms.

Other research studies have demonstrated that due to the current trend of less full sunlight exposure and increased radiation from microwave ovens, mobile phones, Wifi, etc. red blood cells begin clumping (long chains of cells called rouleaux) and this can clog capillaries and cut down **blood supply (oxygen and other nutrients) to the brain and nerves**. This condition may be a factor in Alzheimer's, Motor Neuron disease and Parkinson's disease.

*Every disease is curable, except when life energy is depleted. Julia H. Sun*

## Industrial and Agricultural Water Devices

Phi'on devices are designed for inline (water pipe) domestic, industrial and agricultural use. These devices have inside diameters of ½", ¾", 1", 1 and ¼" and 2". The ¾" is illustrated below.



These inline devices can be installed below ground (in the soil), and in a horizontal (preferably) or vertical position on a wall.

### Phi'on water device capabilities in agriculture

The Phi'on, non-mechanical, magnetic configuration has additional benefits that have not been experienced in the mechanical versions that are currently in the market.

- 1) Reduction of e-coli: Laboratory tests have been conducted to test for the reduction in E. coli (pathogenic microbe) in various waters and proved a 99.9% elimination of the pathogenic microbe species. These tests were undertaken independently in government accredited and approved laboratories.
- 2) Negatively charged water from these devices potentate any living system (eg. soil and plants). For example, the activity and function of soil biology is significantly increased, and soil water storage capacity improves. In the case of plants, the following has been observed and measured:
  - i. Viable seed germination is increased to nearly 100%

- ii. Shorter growing period to maturity
- iii. Nutrient uptake is increased by 2-4 fold
- iv. Significantly decreased insect attack
- v. Significantly decreased plant diseases, including fungal attacks
- vi. Fruit flavour is significantly increased
- vii. Vegetable and fruit size can at least double without loss of flavour and texture
- viii. Vegetable and fruit storage time is increased.
- ix. Increases resilience to cold temperatures

3) The devices have also been found to enhance the quality of the liquids.

Trials with wine have produced significant results that include:

- i. Greater balance in wine structure
- ii. Increased sense of flavours and aroma is intensified
- iii. Considerably less tannin taste and sharpness (acidity) taste
- iv. Potentially enhances the beneficial aspects of polyphenols
- v. Wine does not oxidise and has been tested to last in high quality when open to the air for greater than 12 months

4) Water shows significant improvements:

- i. The water tastes softer and balanced
- ii. The water has a lower viscosity (less friction or resistance on a surface) and is therefore better as a wetting agent
- iii. The treated water improves biological and chemical oxygen demand (BOD and COD)
- iv. Reduction of chemical toxicity in waste water, including septic water

The experimental results outlined above demonstrate the following major differences between the **Phi'ón Syntropy Water** and other commercial forms of structured water:

<b>Phi'ón Syntropy Water</b>	<b>Other commercial forms of structured water</b>
Holds a permanent negative (-mV) charge	Not claimed
Sustains increased surface tension	Not claimed or some claim a low surface tension
Sustains natural preservative properties	Not claimed
Sustains a permanent light blue colour	Not claimed
Progresses to a high energy status after initial processing	Not claimed
Eliminates pathogenic microbes in fluids (eg. raw milk)	Not claimed
Demonstrated synergistic relationship with beneficial microbial species in food production	Not claimed (albeit possibly demonstrated in some cases)

*Note: In the table above, Phi'ón states a Not claimed opinion, based on information and evidence available on the websites of companies selling structured water devices.*

These results are further explained in the sections below.

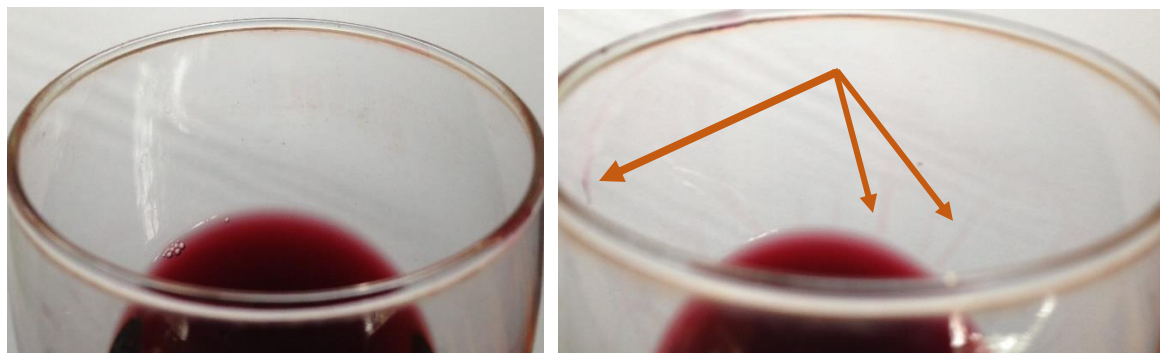
### Increased surface tension

Surface tension is a measure of the strength of the water's surface film. The attraction between the water molecules creates a strong film, which among other common liquids is only surpassed by that of mercury. This surface tension permits water to hold up substances heavier and denser than itself. A steel needle carefully placed on the surface of a glass of water will float. Some aquatic insects such as the water strider rely on surface tension to walk on water.

Phi'ón has undertaken tests to measure the surface tension of its structured water and in 100% of measurements, the Phi'ón (Syntropy) water has higher surface tension than the controlled water sample that is unstructured water (usually urban drinking water or bottled spring water)

Cohesive forces are responsible for **surface tension and** the tendency of a liquid's surface to resist rupturing when placed under tension or stress. Water molecules at the surface (at the water-air interface) will form hydrogen bonds with their neighbours, just like water molecules deeper within the liquid. However, they are exposed to air on one side, and have fewer neighbouring water molecules to bond with, therefore they will form stronger bonds with the neighbours. This increased surface tension capacity significantly improves the ability of water to adhere to a surface when used as a spray application to deliver biology, nutrients and chemicals to the soil, plant, water, work or domestic surfaces, etc. Increased surface tension also significantly reduces spray drift that is a major issue in the use of chemical sprays, and therefore increases the contact of the chemical onto the target. Increased surface tension also decreases evaporation.

Below is an example of surface tension differences in a glass of red wine that is structured (left image: using a Phi'ón bottle top device) and unstructured wine (right image). The unstructured wine will produce a tear-drop effect or streaks of wine on the glass surface due to the lower surface tension capacity. The structured wine is evenly distributed around the glass.



Also, the viscosity or surface tension of the Phi'ón MEA structured water enables the body's fluids to move with greater ease, and therefore (based on published scientific papers) enables:

- Excellent cellular hydration due to the smaller water molecule clusters
- Balance to bodily fluids (ie. blood, lymphatic fluids, intercellular water, etc.)



- The absorption and assimilation of healthful vitamins and minerals to cells
- Improved digestion and elimination
- Health improvements with less joint and muscle pain, and more energy production.
- Promotion of healthy cell life (anti-aging).

#### Sustained natural preservative of the Phión syntropy water

A clear distinction between the Phión syntropy water and other structured waters is its natural preservative capacity. The implications for this syntropy capacity is significant as it may eliminate actions in food production to add either natural or synthetic preservative substances to the food (including wine). Below is an example with raw milk:



Research undertaken by Phión during 2016 demonstrated that raw milk processed through a MEA (Magnetised, Activated and Energised) water device could potentially replace pasteurisation and homogenisation. This would enable raw milk to be consumed with integrity in its natural biological and enzymatic state. This research also demonstrated that the MEA device will eliminate pathogenic microbes (eg. the harmful gram-negative species like E. Coli) and increase storage time in a bottle by 1-2 weeks.

The results also demonstrated that oils do not separate from the cream (fats) after the milk has been processed by a MEA device (as shown in the images above where the 3<sup>rd</sup> image from the left of **untreated raw milk** has separation of oils and fats after 4 days in refrigeration)

These results show that there is a pathway to restore all forms of milk (including stored breast milk) to its natural healthy state with integrity (ie. retaining its natural biological and enzymatic conditions for life). This **syntropy effect** is evident in the 4<sup>th</sup> image from the left of Phión treated raw milk as it separates into curds and whey after 2-3 weeks in refrigeration without any loss of milk integrity. That is, the milk does not decay or become contaminated. This natural preservative feature of Phión syntropy in liquids has significant potential for food preservation.

Raw milk is also rich in endocannabinoids, and particularly in breast milk where it protects the infant against disease, stimulates suckling response and helps to regulate appetite. If your

organ and system cells are functioning at an optimal level, then the **body's natural endocannabinoid system** will use Omega 3 fatty acids to repair and grow the cannabinoid receptors. Milk that is obtained from organic, grassed pasture and is consumed in its raw form has the highest levels of Omega 3 fatty acids. The Omega 3 is also readily available from Hemp Seed Oil and is known to boost brain function, balance cholesterol, support fertility, heart function, joints, skin, vision, and is critical in anti-aging and anti-inflammatory regulation. We should not lose sight of the fact that we have a natural in-built endocannabinoid system, and a diet rich in Omega 3 is critical to sustain this system, particularly in pregnant and breast-feeding women.

Similar natural preserving results have been achieved with fruit in Phión syntropy water, compared to unstructured water. In the images below, the structured or syntropy water results are on the right of both images and the unstructured water results are on the left.



In the left image, blueberries were diced and immersed in the water. In the left bottle of unstructured water, a mould formed on the top of the water, however no mould formed in the structured water. In the right image, whole blueberries were immersed in the waters. In the left bottle the extraction of fruit phytonutrients was low compared with the right bottle of structured water (ie. differences in colour intensity). Also, it is highly likely that the phytonutrients in the unstructured water (left bottle) have oxidised. These results show a clear natural preservation quality in the Phión structured, syntropy water, compared with unstructured water. These results have significant implications for preserving fruit, and the use of water in cooking, fermentations of food, liquid probiotics, etc.

#### Phión syntropy water retains a blue colour

It is already known from science that light is versatile because photon energy readily converts into other forms of energy in a syntropy manner. For examples, when water is in a structured form it can significantly enhance the following effects:

- Incident light of one wavelength converts to another wavelength, producing fluorescence (eg. the blue colour in negatively charged water)

- Light powers the vibrational energy that drives Brownian motions (*the movement or current of microscopic particles in a fluid, because of the continuous bombardment from molecules of the surrounding medium*)
- Light releases electrons in cellular semiconductors to produce the photoelectric effects (ie. cell aura) or the Qi/Biofeild.
- Light separates charge in photosynthesis in plants (ie. conversion of unusable sunlight energy into usable chemical energy)

Other effects produced by structured water and observed by Phión are cavitation, or a high level of bubbles (left image below) and a light blue/green tinge to the water (right image below). This blue/green colour will persist because the **Phión** water retains its negative charge.



The fact that this colour is sustained over years since the water was restructured to a permanent negative charge is clear evidence that the hexagonal (six-sided) crystalline structure is not only created in the water, but it is sustained permanently. This blue colour can increase slightly in intensity over time and is further evidence of the accumulation of the syntropy effect in the Phión structured water.

Phión structured water progresses to a sustained and higher energy status (syntropy) after initial processing

Nobel Laureate, Szent-Gyorgyi postulates that there exists what he calls the *principle of syntropy or negative entropy (negentropy)*. The basic issue stated by Szent-Gyorgyi is that *there is some basic difference between the living and the non-living*. That is, a living system can self-regulate or self-heal to a higher level of coherence or harmony. Some people use this thesis to explain the spontaneous creation of living species, adaptation and longevity (ie. an optimal level of self-healing).

Although, in nature entropy (decay) is a revolving door, because the syntropy forces are obviously operating to sustain life or evolution. Therefore, there is the issue of the tendency for the world to gradually disintegrate into lower and lower levels of organisation, and the converse fact that the laws of nature prevail in putting things together in a coherent way. This is one of the basic features of nature, if left to its own devices.

The concept of syntropy, while it does help explain some of the serious gaps in the theory of evolution, it can explain how the living or energetic world evolves, expands in complexity, yet retains harmony in natural ecosystems. If syntropy exists, it would seem possible to discover what causes syntropy to entrain and sustain living entities. The mechanism could be an energy activity that causes cells to increase energy in a unified fashion. If it exists in individual cells, there must be some outside, moderating energy mechanism to coordinate this *drive to perfect itself and make the body cells cooperate in a coherent and harmonic manner with other cells*. Otherwise individual cells would strive independently to perfect themselves, evolving in different directions, and in time cause disharmony and dysfunction in the organism.

However, Phión has measured and observed this process in fluid materials whereby the syntropy prevails and entropy is not a prevailing force. For example:

1. An aged wine that has lost its vital state (ie. tending towards vinegar) and is then processed through a Phión bottle top device will over a period of days or weeks, and exposure to the air, restores the wine to a near pristine state of drinkability. This phenomenon has been observed (tasted) by many of Phións clients and in test trials by others (ie., in China using Rice Wine).
2. Raw milk that would normally convert to a decayed state within weeks of storage in refrigeration will progress to a stable and vital state of curds and whey (ie. increase its energy level to a stable or living state)
3. Water that is restructured with a Phión device will increase and sustain a negative charge to a higher negative charge, eg, from -350mV to -1400mV within weeks to months, depending on storage conditions and environmental effects (ie. entraining sunlight or other cosmic energies)

#### Phión syntropy water eliminates pathogenic microbes in fluids

Phión water devices can eliminate pathogenic microbes, like E. Coli. Below are independent test results.

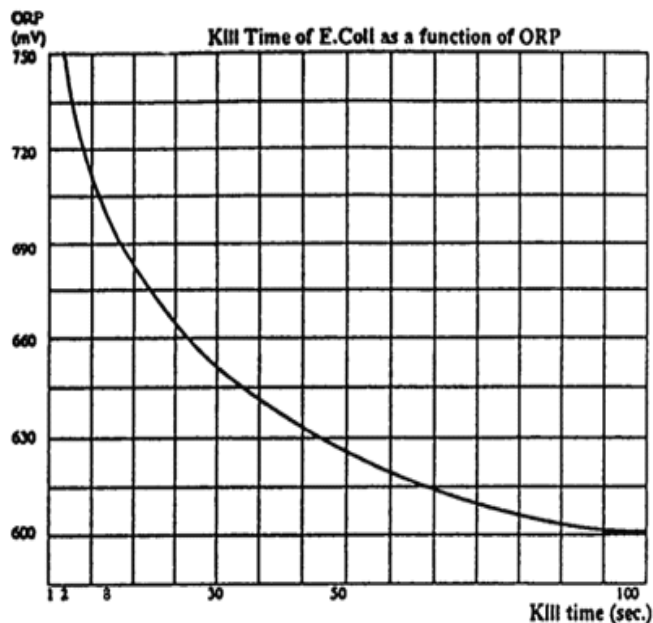
- Test on creek water (14 Nov 2013) reduced E. Coli (faecal coliforms: cfu/100ml) from 250 to 2units. The device used was 1 & ¼"
- Test on piggery water (12 Mar 2014) reduced E. Coli from 2178 units to 1 unit. The device used was 2"

Similar results have been achieved using raw milk (see results described on page 9).

Consequently, the **Phión** device could replace pasteurisation as the MEA device destroys the pathogenic microbes and removes the requirement for homogenisation processes as the milk fats and creams do not separate in permanently structured milk. Also, the milk stores (under refrigeration) in a fresh form for 2-3 times longer than pasteurised milk, albeit it will eventually convert to curds and whey, yet retain its food integrity (no evidence of decay).

One of the major features of the Phión structured or syntropy water is the increase in oxygen, evidenced by the sustained negative charge (eg. electrons of oxygen). The image on page 13

illustrates the pathogenic kill time for E.Coli as a function of increased oxygen (measured as ORP: Oxidation Reduction Potential).



While it appears that the negative (-) charge in the Phión MEA water has an immediate and fast kill action on E. coli, there is also evidence that the increased oxygen in water (measured with an ORP meter as high + values or reduced oxygen reduction/loss potential) is also a significant part of this significant killing effect on E. coli.

Consequently, this syntropy feature of the Phión restructured water enables a wide range of innovations in water management, and the production of food fluids that will sustain a vital or stable state (does not lose energy or food value over time).

#### Phión syntropy water has demonstrated a synergistic relationship with beneficial microbial species in food production

Syntropic food production involves utilising the laws of nature, and applying soil recovery techniques through biological (microbial) balancing, restoration of lateral flows of structured water, planting methods, etc. These principles and techniques enable the integration of food production with the natural regeneration of ecosystems, by restoring, enhancing and sustaining the natural energy flows of ecosystems. This includes the natural relationship between microbes and structured water to achieve life-affirming syntropy within the soil system.

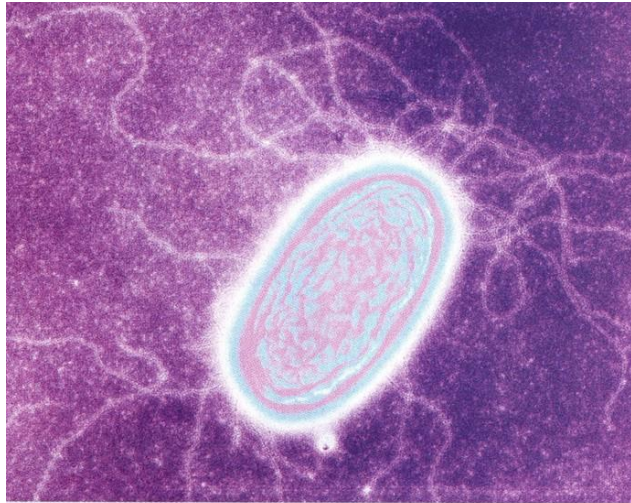
It is this natural ecosystem that produces its own organic matter through boosting microbial diversity and abundance, activation of root activity and facilitating a higher rate of photosynthesis and nutrient flow to plants, which leads to more carbon being sequestered through increased energy exchanges or flows.

Phión has undertaken more than 300 tests and trials of structured water applications to food production. Many of these trials included the use of Phión soil microbial formulations (soil probiotics) that were fermented in Phión structured, syntropy water.

Microbes have a unique association with subtle energies to sustain life. Early single celled microbes would have used the negative charge effects of light and water energies to sustain life, and this capacity became the basis of all life. All plants, animals and humans sustain life



through the electrical wiring of microbes in our digestive system, blood, etc. For example, the microbes use the subtle energies of negatively charged water and photons of light in blood to sustain the vortex within blood to spiral around the 100,000 km of blood delivering arteries, veins and capillaries of the human body. Your heart is not a pump. The combination of heart rhythm and its internal structure create the vortex that spirals blood around the body.



**The *electronic wiring* of biology can access and utilise energy from light photons and the negative charge in structured or syntropy water. Life's clever. It figures out how to suck electrons out of everything we eat and drink. Life is a flow of electrons.**

**Image from New Scientist, 13 August 2011**

### **Bacterial 'wires' an electronic dream**

## Plant production Experiments

The images below and on page 15 are of plants grown with structured, syntropy water and Phiön microbial formulations. In all cases, the food reaches its fullest potential in terms of growth size and flavours. Nutrient uptake (measured with a BRIX meter) by the plants can be 2-4-fold compared to untreated plants. It could be concluded that biology (microbes) and water formed a syntropy, mutual and harmonic relationship at the beginning. Consequently, all other life forms (plants, animals and humans) have symbiotic relationship with water and microbes.



The major points of difference in these experiments compared to the control plants was the intensity of green in the leaves, increased leaf area and numbers of flowers, resilience to insect attack, longer growing time and flower display. Other points of difference between treated and untreated plants, and specifically sprouts (organic wheat and barley seeds) are almost 100% seed germination, earlier sprouting compared to the control (untreated), significantly larger root bowl and earlier maturation in growth phases.

Similar results were achieved in trials in China (see images below)



The above images illustrate the differences in Chilli grown with and without structured water and Phiön microbial formulations. The plants grown with structured water and microbial formulations are on the right of the middle and right images. The Chilli's grown with the structured, syntropy water, showed larger root systems and therefore greater capacity for colonisation by microbes and the uptake of nutrients. Also, the fruit from the syntropy water were longer and the Chilli flavours were far more intense. Overall, the Chilli production (measured by weight) was 5 times greater compared with the control plot of unstructured water, and with no microbial formulation.



The image on the left above, is a comparison of a barley plant root grown with structured, syntropy water and a microbial formulation (on the left of the image), and a barley plant (on the right of the image) from a neighbour's property and grown without structured water and the microbial formulation. Plants grown with the syntropy water and the microbes have root systems 3-4 times in volume (compared to non-treated), and hold considerable more carbon, water and abundance of microbes. The image on the right (page 15) is a medicinal cannabis plant grown in Oregon (USA) with structured water only, however compared with plants grown without this syntropy water, the stems are thicker due to a considerably greater uptake of silica, and plant growth to maturity was much faster.

## Waste Water Treatment

### Septic water

Tests were conducted on the treatment of household septic water by the MEA inline device. The results in the following tables are a comparison between waste water in a septic tank (Raw septic water) and water after it has been processed through a Phi  n magnetic (MEA) water conditioner. The conditioner in this case was a 2" inner diameter pipe device.

The purpose of the test was to measure the change in the chemical and mineral composition of the waste water after treatment with the water conditioner device.

The water that is used for this household septic system has already been treated with a   " MEA water conditioner and therefore the water that is used for flushing the toilets, showering, cooking, etc. is already conditioned with a MEA device. The primary source of the water is from a bore and from rainwater, generally in a 50:50 mix.

The major differences between the source (unconditioned) water and the raw septic water are:

Description	Measure	Source water	Septic water	% change
pH	mg/L	5.8	6.5	+12
Eh (ORP)	mV	+430	-180	-142
Chromium	mg/L	<0.01	0.03	+200
Copper	mg/L	0.07	0.05	-29
Lead	mg/L	<0.01	0.02	+100
Manganese	mg/L	<0.01	0.13	+1200
Selenium	mg/L	<0.005	<0.01	+100
Zinc	mg/L	0.06	1.1	+1733

The source water also has very low conductivity (46 us/cm), slight iron (0.04 mg/L) and comparatively low alkalinity (14 mg/l), Calcium (1.7 mg/L), Magnesium (2.2 mg/L) Potassium (0.6 mg/L) Sodium (5.0 mg/L) and Chloride (7.0 mg/L)

The method for treating the septic waste water involved pumping 600L of septic water straight from the septic tank into a 1,000L IBC and then cycling this septic waste water through a 2" MEA water conditioner for a period of about 60 minutes. That is, septic water was pumped from the IBC through the MEA device and returned to the IBC. After about 30 minutes of cycling a dense white gas started to emit from the top of the IBC and continued for about 15 minutes. This gas is assumed to be a range of gasses comprising methane, sulphur, nitrogen, hydrogen, etc. Further tests of this process will be undertaken to test the nature of the gas.

The organic solids from the septic water settled to the bottom of the IBC and all septic smell was eliminated from the resulting water within 30 minutes. Also, the smell was not detected after 2 hours of starting this process and no smell was evident after 3 months.



The following table describes the comparison between the raw septic water and water after treatment through the MEA (magnetic) device. The chemical and mineral tests were undertaken by Sydney Analytical Laboratories on 17 September 2014.

Description	Measure	Raw Septic Water	MEA device results	% change	Standard Industry achievement	Comments
pH	mg/L	6.5	6.8	+ 0.7	NA	
Biochemical Oxygen Demand (BOD)	mg/L	730	460	-37	-20	Significantly better than most existing technologies
Chemical Oxygen Demand	mg/L	1310	470	-64	-20	Significantly better than most existing technologies
Total Organic Carbon	mg/L	340	265	-22		Significant change
Nitrate NO3-	mg/L	<0.01	<0.01	nil		
Nitrate NO2-	mg/L	2.9	1.1	-62		Significant change
Ammonia NH3-N	mg/L	61	69	+13		
Phosphate PO4	mg/L	69	35	-49		Significant change
Eh	mV	-180	-260	-44		
Total Suspended Solids	mg/L	800	87	-89	-50	Significantly better than most existing technologies
Arsenic	mg/L	<0.01	<0.01	nil		
Barium	mg/L	<0.1	<0.1	nil		
Cadmium	mg/L	<0.001	<0.001	nil		
Chromium	mg/L	0.03	0.02	-33		Significant change
Copper	mg/L	0.05	0.02	-60		Significant change
Lead	mg/L	0.02	<0.01	-50+		Significant change
Manganese	mg/L	0.13	0.12	-7		
Mercury	mg/L	<0.0001	<0.0001	nil		
Selenium	mg/L	<0.01	<0.01	nil		
Zinc	mg/L	1.1	0.24	-78		Significant change

In the previous table on page 17, the restructuring of the previous de-structured, septic water through a Phi'on water device (2") is a clear demonstration that structured water provides the syntropy force to revitalise the water towards its natural or balanced state (uncontaminated). This state can be expected to accumulate over time as the syntropy energy in the water accumulates and changes the vital properties of the water, eg. BOD, COD, suspended solids, and the ratio of zinc to copper, etc.)

## Pathogenic microbes

Laboratory tests have been conducted to test for the reduction in E. coli (pathogenic microbe) in various waters after treatment through a MEA device. These tests were undertaken independently by accredited government and commercial laboratories. The results include:

1. Comparison of water drawn from a creek and passed through a 1 and ¼" MEA device and the water drawn from the kitchen tap after passing through the device. The E. coli count at the creek was 250 faecal coliforms (cfu/100 ml) and was reduced to 2 at the kitchen tap outlet. This test was undertaken by laboratories at Southern Cross University, NSW (14 Nov 2013)
2. Comparison of waste water from a piggery and water after it had passed through a 2" MEA device. The waste water had 2,178 faecal coliforms (cfu/100 ml) and only 1 in the water once it had passed through the device. This water was tested by the Tweed Laboratory Centre of the Tweed Shire Council, NSW (12 Mar 2014)

Clearly, these results are significant, and while preliminary until further tests confirm this result with other smaller devices, these results indicate the capacity of the devices to restructure water into a coherent, life affirming and natural structure form.

## Spring Water Treatment

Resonate Research Pty Ltd was asked by Beloka Water (Australia) to test ways to raise the pH of their still spring water for potential markets for more alkaline minerals in the water, and a slightly more alkaline pH. The Beloka spring (still) water has a pH (as measured by a Resonate Research meter) of 6.5, which is about the pH of most natural waters. This water is listed in the top 100 fine waters of the world (***Fine Waters: A connoisseur's guide to the world of premium waters** by Michael Mascha*)

Resonate Research used concentrated seawater to raise the pH.

1. Sample 1: 1.9ml of concentrated seawater (per 750ml) was added and it raised the pH to 7.5.
2. Sample 2: 4ml of concentrated (per 750ml) and it raised the pH to 7.6.
3. Sample 3: 1.9ml of concentrated seawater (per 750ml) was added to the water solution and was then vortexed using the MEA bottle top device (to restructure the water) The pH settled at 7.8.

Resonate Research concluded that:

1. The MEA water devices have a significant effect on raising the pH of this water after alkaline (electrolyte) minerals from concentrated seawater were added.

2. There was no significant change in the taste of the water and the result was deemed acceptable for the market.
3. Seawater has every mineral known to man and has high electrolyte values (ie. very good for human health: see [https://en.wikipedia.org/wiki/Water-electrolyte\\_imbalance](https://en.wikipedia.org/wiki/Water-electrolyte_imbalance)) The negative voltage in the Beloka water after concentrated seawater was added raised the pH by 3 fold (ie. from 7.5 to 7.8), perhaps by making the alkaline minerals (Ca, Na, K, Mg, Rb, Sr, etc.) more bioavailable and increasing  $H^-$  (negative) ions in solution. **Note:** *pH is the negative logarithm of the hydrogen ion concentration:  $pH = -\log [H^+]$  That is, a pH of 6 is 10 times more acidic than a pH of 7.*
4. Increasing the concentrated seawater solution above 1.9ml for 750ml of water has no significant or added advantage for increasing the pH value to more alkaline.
5. For more information see: <http://www.seafriends.org.nz/oceano/seawater.htm>, and <http://www.traceminerals.com/trace-minerals/why-you-need-ionic-minerals>

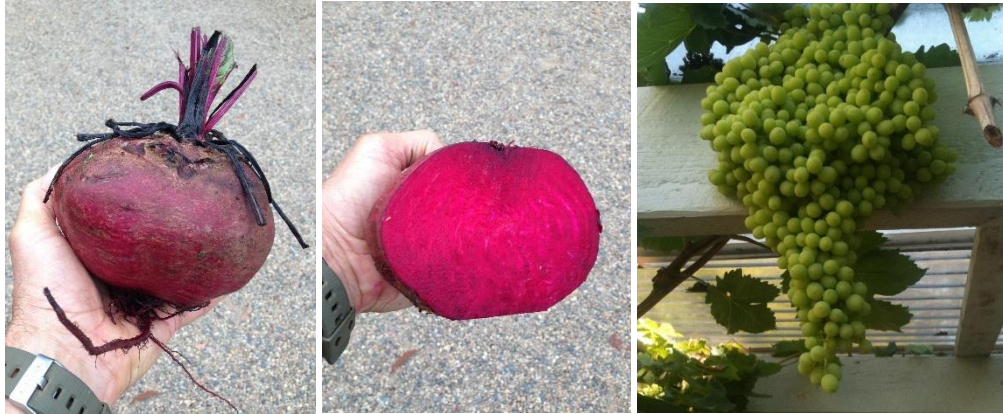
## Food and other plant applications

Research by Resonate Research since 2012 has demonstrated that the negatively charged water produced by the MEA water conditioner devices has a natural and unique association with microbes (eg. soil water, and the gut of animals and humans) in the transport of nutrients. That is, when negatively charged water is added to soil biology, the uptake of nutrients to a plant can be 2-4 folds greater. Resonate Research has measured at least a doubling in food production.

For example, the images (page 20) of the vineyard (Half Moon Vineyard, Mongarlowe, NSW, Australia) show very healthy plant foliage albeit that they grow on very poor soils with low nutrient availability. The size of plant leaves trebled, and grape bunches doubled in size along with grape numbers. Consequently, grape tonnage doubled (from 5 to 10 tonnes) in 2015 due to the use of a 2" water conditioner and the application (fertigation) of Resonate Research soil biology (Catalyst) to the water. There was no loss in grape juice quality.



Similar results have been achieved with other food types, eg:



The images above are of a beetroot grown with MEA (negatively charged) water and weighing 1.5kg and a bunch of table grapes also grown with MEA water and containing 375 grapes.

Below are other examples of root vegetables that have been grown with negatively charged water from a MEA water conditioner. These foods have high nutrient density (measured with a BRIX meter) and reached a size and quality (not woody in texture) that is evidence of the potential for vegetables when grown with MEA water and Phi6n soil biology. The image on the right shows that when cabbages are grown with negatively charged water there is little or no insect attack.



Food production is an integrated approach that combines negatively charged water, beneficial soil biology (added as an inoculant) and the use of compost (including organic waste recovered from waste water treatments).

Some trials on the use of MEA water from the bottle top device to water roses have been undertaken and the following photographs (page 21) demonstrate that the size and health of the roses increased considerably after application of the MEA water.

These results are consistent with measurements and observations by Resonate Research with flowers, fruit and vegetables since 2012. In all cases a plant increases its potential to express size, nutrient density, form and health (disease free) when watered with MEA water, and this potentially increases when biology (and carbon in the form of compost) is added to the growing area.





Clearly, there is an opportunity to use the MEA water devices in a wide range of applications, including flower production, viticulture, horticulture, vegetable production, etc. to increase food and plant health in a manner that is largely disease free and nutrient dense.

Other opportunities will exist with the use of Phi  n soil biology. In the images below there is a comparison of a portion of a paddock comprising pasture grasses before and after treatment with Phi  n biology (including copper sulphate to improve copper deficiency and the uptake of phosphorous)



**After treatment with soil biology**



**Before treatment with soil biology**

The irrigation of crops and pastures with negatively charged water will always improve production results. Similar production results can also be achieved with forestry.

### Application of biology through a venturi to a MEA water conditioner

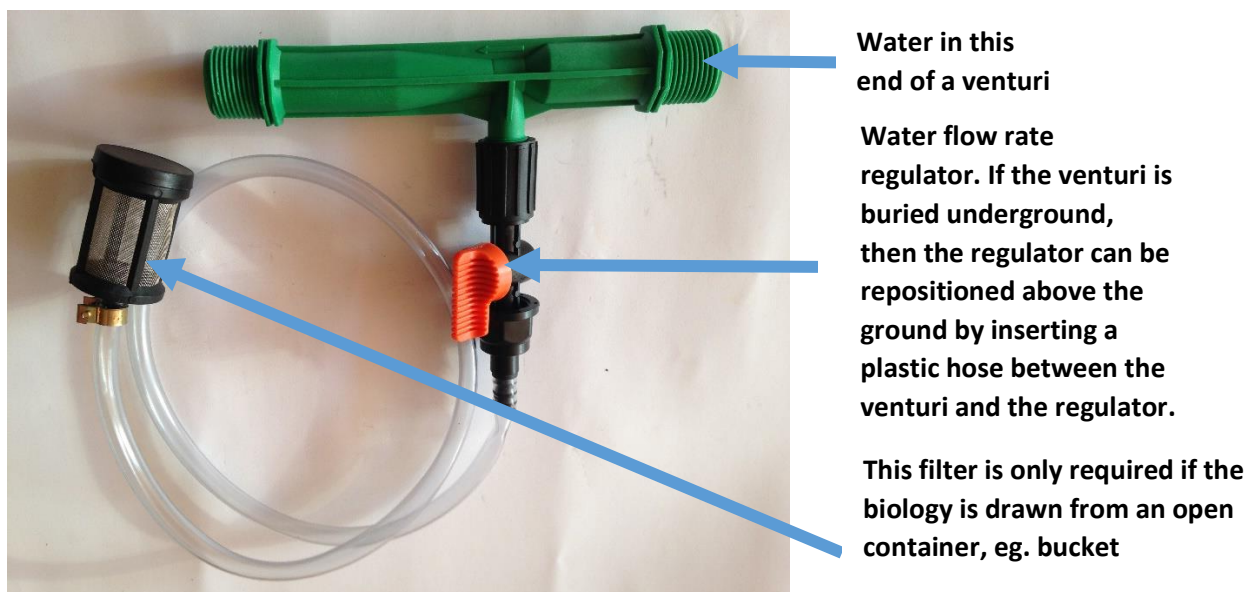
This scheme (described below) can be used in small to large scale operations of water and biology delivery to plants and soil. Further details on the installation of the MEA water devices are in the Paper titled: ***Installation of the MEA Water Devices.***

The venturi (see image on the next page, 22) is installed prior to the input end of the MEA water conditioning device and at least 1m (metre) before the inlet of the device.

The venturi is attached via a plastic hose to the tap of the container that holds the biology. This container would be mounted at least 1m (metre) above the ground to provide sufficient head of water flow to the venturi. The tap on the container controls water flow (on or off) to another inline tap (on the hose between the venturi and the biology container) that regulates the rate of water flow (ie. drops per minute: 20 drops equal 1mm of volume) to the venturi/MEA water device, and hence to the soil or plant.

This set-up was installed in a Chilli trial in Handan, China. The purpose of the trial was to test the increase in Chilli production using MEA negatively charged water and Phiön developed soil biology. The biology was fed into the water line via a venturi before the water conditioner device (see images next page)

The trial involved two (2) plots with one plot as a control (no MEA water and no biology applied) and the other plot of equal number of plants had MEA water and biology applied.



Water through the venturi flows from the short end of the venturi (as shown above).



The image above shows the venturi installed in line with the MEA water device at Handan, China. The system is tested prior to covering in the trench of the system to be buried.



## Fish production and health in structured water

Phi'on has supplied water devices for testing results in ponds for fish production (eg. trout) and for assessment of results in aquariums.



Test results have demonstrated that fish that are kept in structured water (ponds and tanks) show the following changes, along with changes in the water and habitat conditions:

- The water became clearer and algae disappeared
- Fish colour improved, ie. vividness
- Fish activity improved and was sustained
- Reproduction rates improved
- Fish diseases and deaths dropped significantly

These results can be accounted for due to the increased oxygen levels in the water and a water environment that eliminates pathogenic microbes and reduces suspended materials.

## Syntropy in Phi'on structured water

**Phi'on water device technology has a capacity to produce syntropy drinking water and grow food with a high syntropy expression that are critical forces in sustaining good cellular health and longevity.**

By way of contrast, the growth of **chemical farming and processed food** since the 1950's has had a significant impact on cell health and therefore life quality or wellbeing. The other entropy forces acting in parallel against human health are:

- The introduction of **synthetic chemicals into foods** as preservatives, emulsifiers, taste enhancers, etc.
- The introduction of **toxic chemicals into drinking water** as fluoridation and chlorination, combined with chemical run-off from farming lands
- The escalating **propensity of people to consume both pharmaceutical drugs (including vaccinations) and recreational drugs**, whereby both have severe side effects that reduce or subdue the body's natural syntropy forces
- The **lack of contact that humans have with the syntropy forces of the natural environment**, including the full spectrum (ROYGBIV) of sunlight energy
- The **lack of availability and growing of fresh, organic food as a staple diet.**

These above-mentioned factors are causing significant cellular toxicity, along with increasing life stresses that lead to entropy or cellular decay; and this is the pathway to disease. Unfortunately, the medical system (ie. the General Practitioner: GP) is not equipped with the knowledge to advise on **solutions that are syntropy based**, such as, good food choices, nutrition, water quality, life-style choices, etc. A GP can only, and legally prescribe a synthetic drug, and this form of **solution is entropy based** due to the side effects and toxicity of drugs to cells. Most people do not assess the risk of taking pharmaceutical drugs mainly due to their total trust in the doctor and poor health and wellbeing education throughout life. For example, most people have no idea about the serious effects of dehydration, radiation, and the constant use of processed or fast food.

It is for these reasons that a new approach to health is required to enable all people to have access to negatively charged, structured, syntropy water for drinking, food production and food preparation. **Syntropy drinking water and the syntropy water in fresh organic food, contains the storage phenomena of forces that drives life to its fullest potential.** Ready public access to syntropy water is the main way to arrest the rapid decline of human health towards chaos. Any improvement in the global status of human health will reverse the inevitable economic and social chaos, particularly in the developed world.

The key question arising from the factors that differentiates the **Phión Syntropy water** device results from other commercial technologies is the fact that the **Phión Syntropy Water permanently retains its negative charge.** The only explanation for this difference is that the **Syntropy Water devices create another time and space dimension to the six-sided crystalline structure in the water, that creates a permanent bond between the water molecules, and this prevents the exposure of the bonding to disorganisation**, ie. prevents entropy, including oxidation.

## Summary of structured water values for health

Most natural and wild flowing waters have a negative charge (millivolts-mV). These waters are found in some groundwater sources (mineralised), springs and wild (unpolluted) rivers. The world's **healing water** sources (sometimes called miraculous, magic or energised water) are often discovered in wells, bores and springs where the water is in close contact with the minerals and magnetism of the rocks. These waters are known for their homeopathic and healing effects for animals and humans. What are the properties of water that make it **life affirming** or **healing, and supports vitality in food production?**

Clearly, water is critical to body function as it represents 70% (by weight) of the human body and 80% of cell volume. The science of water is relatively new and largely incomplete, however there is enough science to demonstrate that water with a negative millivolts charge is life-affirming or sustains life. Human and animal cells have a healthy charge of between -25mV to -50mV. The cells of an injured part of the body will rise to a negative (-) 50mV to accelerate healing and make new cells. This change in polarity facilitates the movement of nutrients to



the area that requires healing. **Therefore, we can assume that to heal the body you require a capability (ie. negatively charged cells and nutrient availability in the body) to deliver a negative charge (-) 50mV on demand.** Also, we are designed to eat food that is vital (ie, fresh, organic and within 60 hours of harvest) to get the life-force energy (syntropy) within the cells of the food.

Have you ever noticed how good it feels to walk barefoot on a sandy beach or in a forest? There is a reason for that and it is called the grounding effect. As humans we are by nature designed to have a daily connection with nature. Many cultures have this daily connection, however modern, Western society has little or no contact daily with nature. The reason for this sense of well-being when we have daily contact with nature is that you are receiving a surge of **potent healing negative electrons (syntropy) from the ground.**

The earth has a slightly negative charge, so when you stand barefoot on the ground, electrons from the earth flow into your body, giving you a virtual *transfusion* of healing power. When you drink negative voltage (electron charged) water the effect is the same, albeit that it does not replace our in-built requirement for regular contact with nature. So why do we need this constant grounding with nature, the need to eat whole natural foods and drink negative voltage water?

- Free radical stress from exposure to mercury pollution, cigarettes, insecticides, pesticides, trans fats, radiation and irradiation of food, and many others, continually deplete your body of electrons and oxygen
- Grounding effectively alleviates inflammation because it thins your blood (improved viscosity and greater oxygen flow) and infuses you with negatively charged ions through the soles of your feet
- When you are grounded to the earth, the negatively charged electrons you receive increase the structure of the water in your cells
- Living or energised water is **negatively charged water**. This water can hold energy, much like a battery, and can deliver energy too. When you ground, you are charging every single cell in your body with energy your body can use for self-regulation and self-healing
- Surfaces that will allow your body to ground include: sand on the beach, grass, bare soil, ocean and flowing freshwater water, etc.

Healthy kids and adults have a cell charge in the order of -25 to -35mV. Once cell charge falls to -15mV and below then tiredness, sickness, infection and chronic disease arises. A healthy cell charge (negative) can be sustained through natural processes, such as early morning sunlight, nutrient dense food, drinking structured (unpolluted) water (eg. water from a pristine source and with no added chemicals such as fluoride and chlorine), walking barefooted on the beach or on grass, body immersed in moving water (eg. ocean, river, rain, shower), etc. There are meters to measure body voltage, and these meters can be found on the Internet.

A healthy cell charge can be altered to an unhealthy, low negative or positive charge by exposure to air pollution (most large urban environments), junk food, chemically contaminated

water and reverse osmosis water (acid or dead water), moderate to heavy consumption of carbonated drinks and alcohol, over-cooked and processed food, caffeine and moving air from air conditioners, fans, hair dryers, etc.

Negative charge from a cell will always move to the area (cells) of lowest negative or a positive charge. This energy transfer process is known in physics as entrainment. For example, healthy people transfer negative energy to sick people through hugging or touching, and lovers or couples can get into cell-energy equilibrium from energy transfer (one person to the other) through physical contact, eg. holding hands, hugging, etc. Therefore, certain professions involved in close physical contact with clients (eg. physiotherapists, osteopaths, massage therapists, etc.) are always at risk of losing negative charge from their body to their clients. Animals regularly give negative charge to people then go outside to recharge. Any contact with nature, eg. trees, rocks, natural waters, etc. will enable negative charge from the earth to transfer to cells in the body and positive charge from the body to transfer to the earth. Therefore, such contact with nature feels so good for your wellbeing. This activity is called grounding.

The increase in sickness and disease since about the 1950's is directly related to the loss of negative cell charge from the cells of people and animals. This has been largely caused by contamination of air, soil, water and food through chemicals that have caused cell toxicity. Also, people have a much higher propensity to take pharmaceutical drugs rather than use natural healing approaches. So how do you tell if you are at risk with a low cell charge? A simple test is to measure the pH (potential hydrogen) of your urine (cell water) and it should be between 6.5 and 7.8. It is advisable to get a good quality digital pH meter for this task. If the measurement is below 6.5 then your healing capacity has been limited and action needs to be taken to raise urine pH well above 6.5. There is ample scientific evidence to show that cancer will occur with prolonged cell water charge polarity of between -15mV and +30mV. However, while ageing is inevitable, the **process of ageing and disease are vastly hastened by adverse environmental forces that include a multitude of lifestyle and diet factors**. There is no single factor (eg. genes) in aging or the onset of disease.

Since our bodies are ultimately constructed from the *natural things* (ie. food, air and water), and obey very strict natural laws such as the well-known principle of chirality (ie. right and left handedness or spin), and the fact that all amino acids in our body turn a beam of polarised light in the left-handed direction (eg. L-lysine) and sugars to the right-handed direction (eg. D-ribose), you cannot simply create biologically active, synthetic drugs arbitrarily, because any mistake in right or left handedness (or direction of spin) could be averse to life. **Nature, therefore, provides the only unique and biomolecular architecture of irreproducible intelligence and complexity, from which life-affirming food and water exists for living species.**

**Your body is a self-regulating and self-healing system and you must have electrons (-) available to sustain your cell life**, otherwise the cells will die and your organs and other life

support systems (eg. liver, heart, immune, etc.) will malfunction. The human body requires oxygen to move electrons and depletion of body oxygen through poor diet and lifestyle is a pathway to disease. Everyone needs the ability to achieve cell charge of -50mV to -70mV at the point of healing, otherwise you cannot achieve healing. This low cell charge (negative) means that injuries or infections will not repair properly, and you could develop chronic diseases. The remedy is not in the use of pharmaceutical drugs that in the main decrease cell charge, but in a diet with nutrient dense food and drinking negatively-charged water. That is, you need **negative voltage food and water**. Also, the build-up of toxins in the body is a major factor in polarity change and loss of negative charge in cells. Your body will naturally detox with a healthy cell charge, otherwise you may need to use a natural detox procedure.

Scientific papers since about 2000, demonstrate that **water and biological coherence is fundamental to our energy systems and to optimise health, vitality and longevity**. The science of water structure provides insight to the liquid crystalline molecular fabric that interconnects all parts and processes within living things. This living matrix gives a substantial basis for the term *holistic* and a scientific basis for the alternative therapies for humans and animals, including **homeopathic approaches using energised water**. The use of grounding techniques in nature and drinking negative voltage water has an anti-oxidant effect on the body by reducing oxidation (loss of oxygen) and therefore increases the flow of electrons through the body.

Water structure and energy (including cell polarity) are more critical to life function than the natural chemical constituents of water. **The living world is an in equal partnership with the biological molecules and water. Your body, like everything else in the universe, is electric.**



*The human body is a network of neurons that provides the electron flow for information to transfer between cell, organs and systems. A team from Brigham and Women's Hospital (2018) has illuminated the connection between microbes in the gut and the crosstalk between immune cells and brain cells. The health of this information flow for regulation and healing is a critical to cell function. Multiple sclerosis and Parkinson's disease are linked to the dysfunction of this network of neurons. The partnership between structured (-) water and microbes is the key to cell communication.*

*You are your water*

## Moving forward

Most people can enhance the quality of their life with simple diet and lifestyle changes:

- Grow your own food or select food that is organic (natural) and fresh, and do not cook this food in high heat, because high heat changes the fats and oils in foods to a toxic form
- Drink structured (negatively charged) water, and grow your own vegetables, herbs and fruit with this water
- Access the full spectrum of sunlight each day, when you can
- Pursue love, joy and hope and let go of the *negative* emotions that degrade organs and systems
- Avoid radiation, especially the microwave that emits entropy energy out to 6 metres even when the power point is turned on to the microwave. Also, other forms of radiation from mobile phones, WiFi, and other electrical systems
- Connect physically, emotional and spiritually with the natural world as often as possible, eg. beach, forest, gardens, parks, animals, etc.

## Conclusion

It's the 21st-century and we are now beginning to understand that the process of aging has a direct correlation to our body's cellular depletion of structured (hexagonal) water.

Phión has been testing MEA water devices since 2012, and the results indicate a strong **epigenetic** (environmental) influence of the structured (negatively charged) water on soil microbes (biology) and plants, especially important for microbial activity becoming multi-generational (diversity). That is, there was a significant effect of the presence of the MEA negatively charged water (ie. like thunderstorm water) on plant growth, eg. uptake of soil nutrients to the plant.

Consequently, the microbes and negatively charged water are the life forces within the soil, breaking down the nutrition in the soil into forms digestible by the plants. If microbes aren't flourishing in the soil, plants will not properly grow, and will become disease-prone and susceptible to viruses, fungus and insect invasion. There is clear evidence from research trials by Phión that soil health is significantly improved when **structured, negatively charged water is added to microbial formulations**, and sprayed onto the soil and plants (including seeds and seedlings).

Structured water is responsible for the stability of healthy DNA in a cell. When a cell begins to lose its crystalline structure (due to illness or aging), DNA integrity of the cell is often compromised and light emission from the nucleus is either diminished or excited (a state of disharmony or incoherence). The integrity of cellular water is essential for good health or body regulation and healing. Any disease means that proteins are not working in that organ, and the water inside the cell, and near the protein, is not in a structured form. That is, the potential of

the Krebs Cycle to generate the precursors of amino acids and lipids to build proteins, and therefore produce energy; has been compromised.

In this situation, the primary action available is to restore order to the **cell water**. Much of the water in a healthy human body is in a liquid crystal, six-sided, structured form, as well as in the collagen fibres and cellular membranes. The body's tissues (grouping of cells into organs and systems, eg. muscle, nerve or connective tissues) work cooperatively with the structured water to create an information network that reaches every cell. This allows instantaneous transfer of signals and other biological information for regulation and healing.

Quantum coherence of water is really what makes life possible. It could also account for other strange phenomena such as non-thermal electromagnetic field effects on biological systems, and possibly homeopathy.

Phión, MEA water is one way to reinstate the structured water (quantum coherence) in cells to **improve vitality, prevent disease, increase consciousness**, and have the potential to slow down aging. However, full understanding of the intricate dynamics of water in sustaining the energies of life may always remain a mystery.



***The most beautiful experience we can have is the mysterious. It is the fundamental emotion that stands at the cradle of true art and true science (Albert Einstein)***