

MEA water device for water purification

Introduction

The purpose of this paper is to discuss the application of an MEA water conditioning devices (www.meawater.com) in water purification and explain how magnetism has significant potential in a wide range of applications for water treatment.



An MEA water device that has a unique array of neodymium magnets that entrain a permanent negative charge to water and other liquid substances. This device takes water back to its natural form in a flowing stream.

Water is a unique substance, the most abundant of any substance, and yet the most misunderstood substance. Water is also the most important nutrient for life in a pathway to health for all life. Water in its natural flowing, vortex state in nature (eg. a river, creek, or spring) is **structured, negatively charged and energised for life**. However, the water most used by people on Earth is not utilised directly from naturally flowing water systems, and this water is de-structured, mainly positively charged and certainly not in a form to energise life.

Two major issues that are facing the quality of life on Earth, are:

1. The widespread use of de-structured water for urban and agricultural use, and the implications this has for aging, dehydration, disease, and production of nutrient deficient food (dead food)
2. The corporate (pharmaceutical, chemical, and engineering), government and academic vested interests in rejecting the adoption of technologies for re-structuring water. The vested interests in maintaining the status-quo are preventing the adoption of the water re-structuring technologies for wastewater treatment, desalinisation, pollution control, and preservation of liquid supplements (eg. homeopathies, probiotics, etc.).

The considerable amount of money invested into orthodox water technologies is blocking new innovations in to structured water technology. It is very clear that protection of academic and corporate theories, dogma about water and water treatment are impeding the discovery of new knowledge, and consequently improving the wellbeing of all living species.

When the results from the MEA water device are closely analysed, it becomes apparent that current scientific theories cannot adequately explain the results. Throughout the different stages of research, development, and eventually commercial innovation of this unit from 2003-2022 there has been the desire that this unit would ultimately be used for a wide range of applications in water purification, food production and processing, health and wellbeing

products, and the transformation of minerals and compounds (including toxic or radioactive materials).

During the period from 2008 to 2010 I sought advice from a wide range of scientists engaged in water structure science. One notable meeting was with 14 scientists in Vienna during January 2010. The take home messages from this meeting were:

1. The ***Holy Grail*** of water was to entrain a **permanent negative charge** (-mV) into water to create a six-sided, hexagonal, structured water that is perpetual
2. Structured water will retain a light blue colour after 2.5 days (60 hours)
3. Water has the highest level of consciousness and will naturally vortex in perfect geometry (phi) without mechanical support or enticement.

When something new and profound is put forth, then new knowledge must evolve that best explain the technology that produces perpetual structured water. Consequently, when this new knowledge is embraced it will branch out and contribute to a whole new era of innovation and science in water.



The crystalline structure of water has been known since the 1890's. However, when water is removed from its living, flowing, vortexing state, the crystalline structure converts to a five-sided, pentagonal structure or de-structured, non-living state. There are many other indicators of structured water including a blue aura, high level of cavitation (bubbles) on sides of a container, water does not oxidise (eg. wine) absence of pathogenic microbes, neutralises and excludes toxic compounds, eliminates calcite in pipes, and water tastes softer.

MEA water devices (see page 3) use magnetism to create a crystalline structure in the water that perpetually sustains a negative charge and the structure of the water. However, this could only be achieved with a new innovation in the application of magnetism, along with sacred geometry principles in the magnet array. My *go-to-place* in this respect was Da Vinci and his understanding of sacred geometry.

Most water scientists have limited understanding of the science of magnetism because they believe that magnetism cannot be as a resonator of energy, when in fact it can be applied by various methods. Current texts on magnetism contradict what is now being disclosed, but a new paradigm is emerging that will embrace these new concepts and expand on them. This paper provides some examples.

The MEA water device relies on the polarity clearing energy within its natural swirling field of a vortex and the resonance energy of a field of magnetism. Vortexes occur naturally in flowing

water and they do not need enticement within magnetic devices. It is this basic combination of a natural vortex and magnetism enables water to entrain this energy and create a permanent negative charge and a hexagonal, crystalline structure in the water. The dynamic principle of the vortex has long been overlooked in its proper connection with magnetic energy. James C. Maxwell, in the 1800's stated that, *the magnetic force is the effect of the centrifugal force of the vortices and that electromagnetic induction of currents is the effect of the forces called into play when the velocity of the vortices is changing*. In Maxwell's theory, the magnetic energy was in the surrounding space, or *field/energy* was the kinetic energy of the vortices. Michael Faraday even went so far with his interest in this phenomenon as to conclude *there must be currents created in rivers and streams by the passing of a conducting fluid, such as water through the magnetic fields of the earth*. In a more recent time frame (1958), the work of the great scientist/inventor from Austria, Viktor- Schauberger, showed the world a device operated with a vortex generator. However, water device designers have overly relied on developing devices that use a mechanical means to entice or generate a vortex in water, and this has misled new innovations in the science community, and particularly biodynamics. While such mechanisms do create a structure in the water, the water becomes de-structured within 60 hours, albeit this timing is influenced by the water source, eg. spring water or urban (dead) water. As stated earlier, water does not need persuasion to form a vortex, because a water vortex is the natural consciousness of water.

Phion water devices to magnetise and restructure water

The permanent, six-sided, crystalline structure in water can be achieved with the Phi'on **Magnetic, Energised and Activated (MEA)** water devices that were invented by Robert Gourlay, Chief Scientist at Phi'on (see images below). A range of other devices from 1" to 4" inside diameters are described at www.meawater.com.



The Phi'on MEA water Innovation Patents include:

1. Proven ability to entrain a **permanent negative charge** into the water
2. Proven ability of the structured water (ie. the negative charge) to **activate the function of beneficial microbes**, eg. in the soil and in the guts of animals and humans
3. Proven ability of the microbes to **eliminate E. Coli from waste or contaminated water**
4. Proven ability of Phi'on MEA water devices to entrain **natural wave (beneficial) energies** into water passing through a MEA water device.

Phi'on research has also proven the beneficial effects of the structured water on plant growth and productivity, animal, and human health. These results are documented in technical papers on the MEA website at www.meawater.com.

Technologies that destroy water energy

Listed below are descriptions of technologies that are commonly used in conjunction with water filters. These technologies **destroy the life-force energy in water**, remove the negative charge in natural water, and in the case of urban water have chemicals that increase cell toxicity and lower Iodine levels. These technologies create water that is unnatural, dehydrating and often demineralised. Water, in any crystalline structure has two forms: a mass and energy forms. **It is the energy form in water that determines its optimal synergy at a cellular level.**

| Water technologies | Results in water |
|------------------------|--|
| Urban (treated) water | Most urban waters have been chemically treated with fluoridation, chlorination, and an alkalisng agent to raise the water pH to neutral. This chemically treated water has a high positive charge, low oxygen and hydrogen levels compared to structured water. The water is also toxic to cells and reduces cell iodine levels. |
| Reverse osmosis (RO) | This technology removes most of the water minerals and electrolytes and produces water that has a high positive charge. Most bottled water has had RO treatment. |
| Alkaline water systems | Alkaline water has low oxygen and hydrogen levels and therefore diminishes stomach and other digestive functions. |
| Deuterium depletion | Deuterium (2H) and tritium (3H) depletion from water deprives the water of its essential hydrogen and therefore diminishes cell function. Deuterium and tritium occur naturally in spring and groundwaters, and therefore they are in all surface waters. |
| Distilled | Distilled water is mineral, and electrolyte depleted, unnatural with a positive charge. Therefore, this water becomes hungry for minerals and electrolytes in the digestive system and thereby depriving them from the metabolic functions of cells. |
| Desalinised | Desalinised water is depleted of minerals and electrolytes and has a high positive charge. Similarly, this water has lost its life-force energy and therefore capacity to hydrate cells and contribute to optimal cell function. |

Note: In situations where the above water or water devices are installed, it is optimal to put the Phi'on MEA water device after these technologies to neutralise the chemical and replace the positive charge with a negative charge to restore oxygen and hydrogen levels. However, where waters are mineral and electrolyte deficient, a complex salt added to the water can restore it to a natural, mineralised form.

Differences between a Phi'on MEA water device and filters as a way of treating water

The most common question asked about the benefits of choosing a Phi'on MEA water device as opposed to a filter system is what approach delivers the greatest benefit? In most water supply systems in Australia and overseas, the water delivered or accessed for drinking has very few sediments to filter.

Most people buy filters in the false belief that they are removing all of fluoride, chlorine, heavy metals, and chemicals from the water. These toxins are either added to the water by government authorities or are collected by the water through exposure in the environment. However, the impact of water on human and animal health is primarily not determined by water chemistry but by the **physical structure of the water molecules in structured water**.

The natural and physical state of water in a pristine flowing stream is **structured** with a 6- sided, crystalline water molecule array, and carries a negative (-mV) charge. Stored or still water that is delivered from tanks, reservoirs, and straight pipes is **not water in its natural state**. This water has a 5 sided-crystalline structure (destructured state) and carries a positive (+mV) charge. However, **every living cell requires a constant supply of negative (-mV) charge from natural water, fresh food, sunlight, etc. to function in an optimal manner for regulation and healing**. Filters are *rubbish bins* that create dead, unnatural water that has adverse effects on cell health.

| | Phi'on MEA water devices | Filters |
|---|---|---|
| 1 | Transforms water to a natural, and permanent negative charge state. | Sustains and possibly increases the positive (+) charge in water (anti-life). |
| 2 | Neutralises and transmutes the energetic effects of chemicals, heavy metals, and other toxins in water. | Does not remove the energetic form of chemicals, heavy metals, and other toxins in water, albeit that the mass or matter form of these toxins is reduced. However, these toxins collect in the filter over time and increase the toxic energy signature to cells. |
| 3 | Requires no maintenance, and therefore very cost effective. A lifetime asset. | Requires multiple replacement of the filters (rubbish bins) at considerable expense over the life of the system. |
| 4 | Removes through transmutation the calcite scale from pipes by converting calcite into aragonite (another form of calcium carbonate) | Does not remove or transmutate scale in pipes. |
| 5 | Increases cell performance in humans, animals, plants, and beneficial microbes that support life. | Decreases cell life through the removal of essential/beneficial minerals, and the sustained positive charge in the water. |

In summary, the device has been proven to:

1. Operates 24 hours per day without any external power source
2. Requires no maintenance
3. Requires water or other fluids to be pumped or flow (eg. gravity) through into unit
4. Separates (excludes) sludge from water and purifies dirty water, ie. neutralises toxic compounds and eliminates pathogenic microbes.
5. Several units in a series are capable of purifying saline or salty water
6. Larger devices are capable of more complex applications such as neutralising toxic nanoparticles, and radioactive particles from water.

Industrial and Agricultural Water Devices

Phi'on devices are designed for inline (water pipe) domestic, industrial, and agricultural use. These devices have inside diameters of ½", ¾", 1", 1 and ¼", 2" and 4". The ¾" is illustrated below.



These inline devices can be installed below ground (in the soil), and in a horizontal (preferably) or vertical position on a wall.

Phi'on water device capabilities in agriculture

The Phi'on, non-mechanical, magnetic configuration has additional benefits that have not been experienced in the mechanical versions that are currently in the market.

- 1) Reduction of e-coli: Laboratory tests have been conducted to test for the reduction in E. coli (pathogenic microbe) in various waters and proved a 99.9% elimination of the pathogenic microbe species. These tests were undertaken independently in government accredited and approved laboratories.
- 2) Negatively charged water from these devices potentate any living system (eg. soil and plants). For example, the activity and function of soil biology is significantly increased, and soil water storage capacity improves. In the case of plants, the following has been observed and measured:
 - i. Viable seed germination is increased to nearly 100%
 - ii. Shorter growing period to maturity
 - iii. Nutrient uptake is increased by 2-4 fold
 - iv. Significantly decreased insect attack
 - v. Significantly decreased plant diseases, including fungal attacks

- vi. Fruit flavour is significantly increased
- vii. Vegetable and fruit size can at least double without loss of flavour and texture
- viii. Vegetable and fruit storage time is increased.
- ix. Increases resilience to cold temperatures

3) The devices have also been found to enhance the quality of the liquids.

Trials with wine have produced significant results that include:

- i. Greater balance in wine structure
- ii. Increased sense of flavours and aroma is intensified
- iii. Considerably less tannin taste and sharpness (acidity) taste
- iv. Potentially enhances the beneficial aspects of polyphenols
- v. Wine does not oxidise and has been tested to last in high quality when open to the air for greater than 12 months

4) Water shows significant improvements:

- i. The water tastes softer and balanced
- ii. The water has a lower viscosity (less friction or resistance on a surface) and is therefore better as a wetting agent
- iii. The treated water improves biological and chemical oxygen demand (BOD and COD)
- iv. Reduction of chemical toxicity in wastewater, including septic water

The experimental results outlined above demonstrate the following major differences between the **Phi'ón Syntropy Water** and other commercial forms of structured water:

| Phi'ón Syntropy Water | Other commercial forms of structured water |
|--|--|
| Holds a permanent negative (-mV) charge | Not claimed |
| Sustains increased surface tension | Not claimed or some claim a low surface tension |
| Sustains natural preservative properties | Not claimed |
| Sustains a permanent light blue colour | Not claimed |
| Progresses to a high energy status after initial processing | Not claimed |
| Eliminates pathogenic microbes in fluids (eg. raw milk) | Not claimed |
| Demonstrated synergistic relationship with beneficial microbial species in food production | Not claimed (albeit possibly demonstrated in some cases) |

Note: In the table above, Phi'ón states a Not claimed opinion, based on information and evidence available on the websites of companies selling structured water devices.

These results are further explained in the sections below.

Increased surface tension

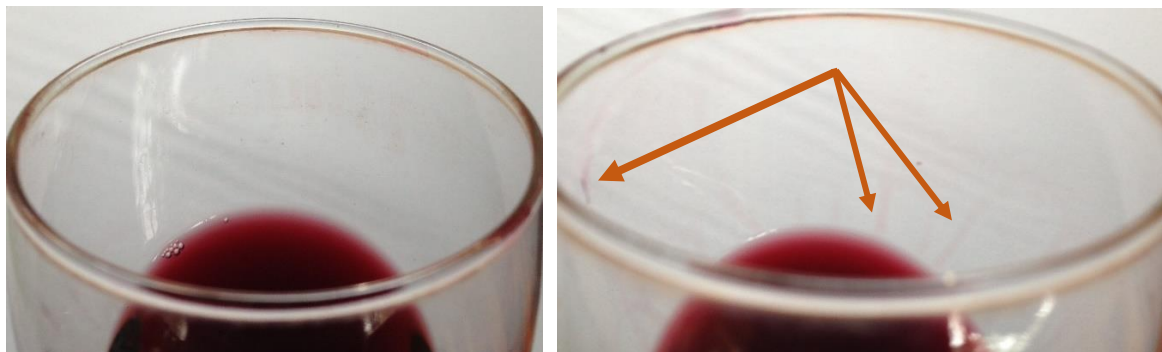
Surface tension is a measure of the strength of the water's surface film. The attraction between the water molecules creates a strong film, which among other common liquids is only

surpassed by that of mercury. This surface tension permits water to hold up substances heavier and denser than itself. A steel needle carefully placed on the surface of a glass of water will float. Some aquatic insects such as the water strider rely on surface tension to walk on water.

Phión has undertaken tests to measure the surface tension of its structured water and in 100% of measurements, the Phi'on (Syntropy) water has higher surface tension than the controlled water sample that is unstructured water (usually urban drinking water or bottled spring water)

Cohesive forces are responsible for **surface tension and** the tendency of a liquid's surface to resist rupturing when placed under tension or stress. Water molecules at the surface (at the water-air interface) will form hydrogen bonds with their neighbours, just like water molecules deeper within the liquid. However, they are exposed to air on one side, and have fewer neighbouring water molecules to bond with, therefore they will form stronger bonds with the neighbours. This increased surface tension capacity significantly improves the ability of water to adhere to a surface when used as a spray application to deliver biology, nutrients and chemicals to the soil, plant, water, work, or domestic surfaces, etc. Increased surface tension also significantly reduces spray drift that is a major issue in the use of chemical sprays, and therefore increases the contact of the chemical onto the target. Increased surface tension also decreases evaporation.

Below is an example of surface tension differences in a glass of red wine that is structured (left image: using a Phión bottle top device) and unstructured wine (right image). The unstructured wine will produce a tear-drop effect or streaks of wine on the glass surface due to the lower surface tension capacity. The structured wine is evenly distributed around the glass.



Also, the viscosity or surface tension of the Phión MEA structured water enables the body's fluids to move with greater ease, and therefore (based on published scientific papers) enables:

- Excellent cellular hydration due to the smaller water molecule clusters
- Balance to bodily fluids (ie. blood, lymphatic fluids, intercellular water, etc.)
- The absorption and assimilation of healthful vitamins and minerals to cells
- Improved digestion and elimination
- Health improvements with less joint and muscle pain, and more energy production.
- Promotion of healthy cell life (anti-aging).

Sustained natural preservative of the Phión syntropy water

A clear distinction between the Phión syntropy water and other structured waters is its natural preservative capacity. The implications for this syntropy capacity is significant as it may eliminate actions in food production to add either natural or synthetic preservative substances to the food (including wine). Below is an example with raw milk:



Research undertaken by Phión during 2016 demonstrated that raw milk processed through a MEA (Magnetised, Activated and Energised) water device could potentially replace pasteurisation and homogenisation. This would enable raw milk to be consumed with integrity in its natural biological and enzymatic state. This research also demonstrated that the MEA device will eliminate pathogenic microbes (eg. the harmful gram-negative species like E. Coli) and increase storage time in a bottle by 1-2 weeks.

The results also demonstrated that oils do not separate from the cream (fats) after the milk has been processed by a MEA device (as shown in the images above where the 3rd image from the left of **untreated raw milk** has separation of oils and fats after 4 days in refrigeration)

These results show that there is a pathway to restore all forms of milk (including stored breast milk) to its natural healthy state with integrity (ie. retaining its natural biological and enzymatic conditions for life). This **syntropy effect** is evident in the 4th image from the left of Phión treated raw milk as it separates into curds and whey after 2-3 weeks in refrigeration without any loss of milk integrity. That is, the milk does not decay or become contaminated. This natural preservative feature of Phión syntropy in liquids has significant potential for food preservation.

Raw milk is also rich in endocannabinoids, and particularly in breast milk where it protects the infant against disease, stimulates suckling response and helps to regulate appetite. If your organ and system cells are functioning at an optimal level, then the **body's natural endocannabinoid system** will use Omega 3 fatty acids to repair and grow the cannabinoid receptors. Milk that is obtained from organic, grassed pasture and is consumed in its raw form has the highest levels of Omega 3 fatty acids. The Omega 3 is also readily available from Hemp

Seed Oil and is known to boost brain function, balance cholesterol, support fertility, heart function, joints, skin, vision, and is critical in anti-aging and anti-inflammatory regulation. We should not lose sight of the fact that we have a natural in-built endocannabinoid system, and a diet rich in Omega 3 is critical to sustain this system, particularly in pregnant and breast-feeding women.

Similar natural preserving results have been achieved with fruit in Phión syntropy water, compared to unstructured water. In the images below, the structured or syntropy water results are on the right of both images and the unstructured water results are on the left.



In the left image, blueberries were diced and immersed in the water. In the left bottle of unstructured water, a mould formed on the top of the water, however no mould formed in the structured water. In the right image, whole blueberries were immersed in the waters. In the left bottle the extraction of fruit phytonutrients was low compared with the right bottle of structured water (ie. differences in colour intensity). Also, it is highly likely that the phytonutrients in the unstructured water (left bottle) have oxidised. These results show a clear natural preservation quality in the Phión structured, syntropy water, compared with unstructured water. These results have significant implications for preserving fruit, and the use of water in cooking, fermentations of food, liquid probiotics, etc.

Phión syntropy water retains a blue colour

It is already known from science that light is versatile because photon energy readily converts into other forms of energy in a syntropy manner. For examples, when water is in a structured form it can significantly enhance the following effects:

- Incident light of one wavelength converts to another wavelength, producing fluorescence (eg. the blue colour in negatively charged water)
- Light powers the vibrational energy that drives Brownian motions (*the movement or current of microscopic particles in a fluid, because of the continuous bombardment from molecules of the surrounding medium*)
- Light releases electrons in cellular semiconductors to produce the photoelectric effects (ie. cell aura) or the Qi/Biofeild.

- Light separates charge in photosynthesis in plants (ie. conversion of unusable sunlight energy into usable chemical energy)

Other effects produced by structured water and observed by Phión are cavitation, or a high level of bubbles (left image below) and a light blue/green tinge to the water (right image below). This blue/green colour will persist because the **Phión** water retains its negative charge.



The fact that this colour is sustained over years since the water was restructured to a permanent negative charge is clear evidence that the hexagonal (six-sided) crystalline structure is not only created in the water, but it is sustained permanently. This blue colour can increase slightly in intensity over time and is further evidence of the accumulation of the syntropy effect in the Phión structured water.

Phión structured water progresses to a sustained and higher energy status (syntropy) after initial processing

Nobel Laureate, Szent-Gyorgyi postulates that there exists what he calls the *principle of syntropy or negative entropy (negentropy)*. The basic issue stated by Szent-Gyorgyi is that *there is some basic difference between the living and the non-living*. That is, a living system can self-regulate or self-heal to a higher level of coherence or harmony. Some people use this thesis to explain the spontaneous creation of living species, adaptation, and longevity (ie. an optimal level of self-healing).

Although, in nature entropy (decay) is a revolving door, because the syntropy forces are obviously operating to sustain life or evolution. Therefore, there is the issue of the tendency for the world to gradually disintegrate into lower and lower levels of organisation, and the converse fact that the laws of nature prevail in putting things together in a coherent way. This is one of the basic features of nature, if left to its own devices.

The concept of syntropy, while it does help explain some of the serious gaps in the theory of evolution, it can explain how the living or energetic world evolves, expands in complexity, yet retains harmony in natural ecosystems. If syntropy exists, it would seem possible to discover what causes syntropy to entrain and sustain living entities. The mechanism could be an energy activity that causes cells to increase energy in a unified fashion. If it exists in individual cells,

there must be some outside, moderating energy mechanism to coordinate this *drive to perfect itself and make the body cells cooperate in a coherent and harmonic manner with other cells*. Otherwise, individual cells would strive independently to perfect themselves, evolving in different directions, and in time cause disharmony and dysfunction in the organism.

However, Phión has measured and observed this process in fluid materials whereby the syntropy prevails and entropy is not a prevailing force. For example:

1. An aged wine that has lost its vital state (ie. tending towards vinegar) and is then processed through a Phión bottle top device will over a period of days or weeks, and exposure to the air, restores the wine to a near pristine state of drinkability. This phenomenon has been observed (tasted) by many of Phións clients and in test trials by others (ie., in China using Rice Wine).
2. Raw milk that would normally convert to a decayed state within weeks of storage in refrigeration will progress to a stable and vital state of curds and whey (ie. increase its energy level to a stable or living state)
3. Water that is restructured with a Phión device will increase and sustain a negative charge to a higher negative charge, eg, from -350mV to -1400mV within weeks to months, depending on storage conditions and environmental effects (ie. entraining sunlight or other cosmic energies)

Phión syntropy water eliminates pathogenic microbes in fluids

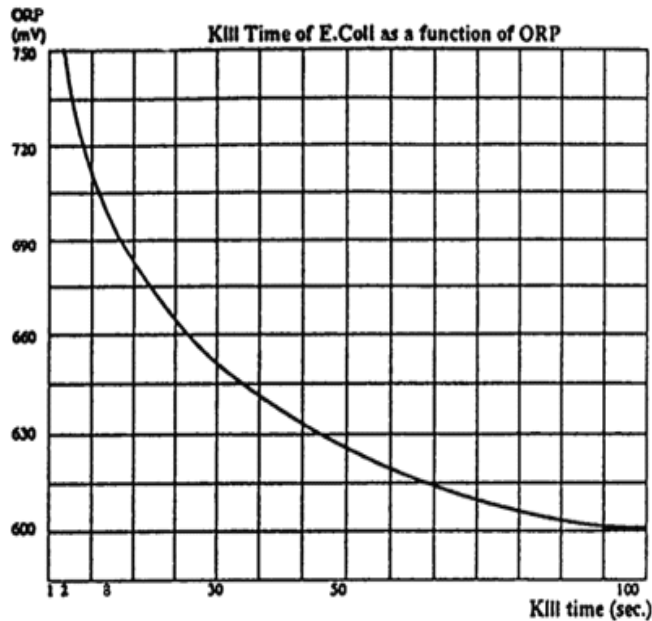
Phión water devices can eliminate pathogenic microbes, like E. Coli. Below are independent test results.

- Test on creek water (14 Nov 2013) reduced E. Coli (faecal coliforms: cfu/100ml) from 250 to 2units. The device used was 1 & ¼"
- Test on piggery water (12 Mar 2014) reduced E. Coli from 2178 units to 1 unit. The device used was 2"

Similar results have been achieved using raw milk (see results described on page 9).

Consequently, the **Phión** device could replace pasteurisation as the MEA device destroys the pathogenic microbes and removes the requirement for homogenisation processes as the milk fats and creams do not separate in permanently structured milk. Also, the milk stores (under refrigeration) in a fresh form for 2-3 times longer than pasteurised milk, albeit it will eventually convert to curds and whey, yet retain its food integrity (no evidence of decay).

One of the major features of the Phión structured or syntropy water is the increase in oxygen, evidenced by the sustained negative charge (eg. electrons of oxygen). The image on page 13 illustrates the pathogenic kill time for E.Coli as a function of increased oxygen (measured as ORP: Oxidation Reduction Potential).



While it appears that the negative (-) charge in the Phión MEA water has an immediate and fast kill action on E. coli, there is also evidence that the increased oxygen in water (measured with an ORP meter as high + values or reduced oxygen reduction/loss potential) is also a significant part of this significant killing effect on E. coli.

Consequently, this syntropy feature of the Phión restructured water enables a wide range of innovations in water management, and the production of food fluids that will sustain a vital or stable state (does not lose energy or food value over time).

Phión syntropy water has demonstrated a synergistic relationship with beneficial microbial species in food production

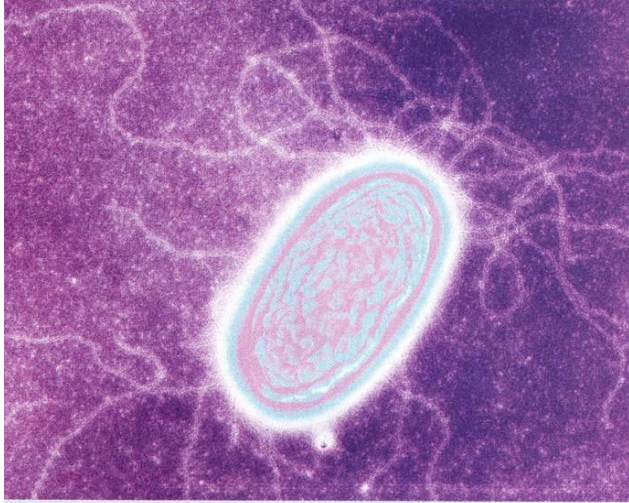
Syntropic food production involves utilising the laws of nature, and applying soil recovery techniques through biological (microbial) balancing, restoration of lateral flows of structured water, planting methods, etc. These principles and techniques enable the integration of food production with the natural regeneration of ecosystems, by restoring, enhancing and sustaining the natural energy flows of ecosystems. This includes the natural relationship between microbes and structured water to achieve life-affirming syntropy within the soil system.

It is this natural ecosystem that produces its own organic matter through boosting microbial diversity and abundance, activation of root activity and facilitating a higher rate of photosynthesis and nutrient flow to plants, which leads to more carbon being sequestered through increased energy exchanges or flows.

Phión has undertaken more than 300 tests and trials of structured water applications to food production. Many of these trials included the use of Phión soil microbial formulations (soil probiotics) that were fermented in Phión structured, syntropy water.

Microbes have a unique association with subtle energies to sustain life. Early single celled microbes would have used the negative charge effects of light and water energies to sustain life, and this capacity became the basis of all life. All plants, animals and humans sustain life through the electrical wiring of microbes in our digestive system, blood, etc. For example, the microbes use the subtle energies of negatively charged water and photons of light in blood to sustain the vortex within blood to spiral around the 100,000 km of blood delivering arteries,

veins, and capillaries of the human body. Your heart is not a pump. The combination of heart rhythm and its internal structure create the vortex that spirals blood around the body.



The *electronic wiring* of biology can access and utilise energy from light photons and the negative charge in structured or syntropy water. Life's clever. It figures out how to suck electrons out of everything we eat and drink. Life is a flow of electrons.

Image from *New Scientist*, 13 August 2011

Bacterial 'wires' an electronic dream

Plant production Experiments

The images below and on page 15 are of plants grown with structured, syntropy water and Phión microbial formulations. In all cases, the food reaches its fullest potential in terms of growth size and flavours. Nutrient uptake (measured with a BRIX meter) by the plants can be 2-4-fold compared to untreated plants. It could be concluded that biology (microbes) and water formed a syntropy, mutual and harmonic relationship at the beginning. Consequently, all other life forms (plants, animals and humans) have symbiotic relationship with water and microbes.



The major points of difference in these experiments compared to the control plants was the intensity of green in the leaves, increased leaf area and numbers of flowers, resilience to insect attack, longer growing time and flower display. Other points of difference between treated and untreated plants, and specifically sprouts (organic wheat and barley seeds) are almost 100% seed germination, earlier sprouting compared to the control (untreated), significantly larger root bowl and earlier maturation in growth phases.

Similar results were achieved in trials in China (see images below)



The above images illustrate the differences in Chilli grown with and without structured water and Phión microbial formulations. The plants grown with structured water and microbial formulations are on the right of the middle and right images. The Chilli's grown with the structured, syntropy water, showed larger root systems and therefore greater capacity for colonisation by microbes and the uptake of nutrients. Also, the fruit from the syntropy water were longer and the Chilli flavours were far more intense. Overall, the Chilli production (measured by weight) was 5 times greater compared with the control plot of unstructured water, and with no microbial formulation.



The image on the left above, is a comparison of a barley plant root grown with structured, syntropy water and a microbial formulation (on the left of the image), and a barley plant (on the right of the image) from a neighbour's property and grown without structured water and the microbial formulation. Plants grown with the syntropy water, and the microbes have root systems 3-4 times in volume (compared to non-treated), and hold considerably more carbon, water, and abundance of microbes. The image on the right (page 15) is a medicinal cannabis plant grown in Oregon (USA) with structured water only, however compared with plants grown without this syntropy water, the stems are thicker due to a considerably greater uptake of silica, and plant growth to maturity was much faster.

Waste Water Treatment

Septic water

Tests were conducted on the treatment of household septic water by the MEA inline device. The results in the following tables are a comparison between wastewater in a septic tank (Raw

septic water) and water after it has been processed through a Phi6n magnetic (MEA) water conditioner. The conditioner in this case was a 2" inner diameter pipe device.

The purpose of the test was to measure the change in the chemical and mineral composition of the wastewater after treatment with the water conditioner device.

The water that is used for this household septic system has already been treated with a ¾" MEA water conditioner and therefore the water that is used for flushing the toilets, showering, cooking, etc. is already conditioned with a MEA device. The primary source of the water is from a bore and from rainwater, generally in a 50:50 mix.

The major differences between the source (unconditioned) water and the raw septic water are:

| Description | Measure | Source water | Septic water | % Change |
|-------------|---------|--------------|--------------|----------|
| pH | mg/L | 5.8 | 6.5 | +12 |
| Eh (ORP) | mV | +430 | -180 | -142 |
| Chromium | mg/L | <0.01 | 0.03 | +200 |
| Copper | mg/L | 0.07 | 0.05 | -29 |
| Lead | mg/L | <0.01 | 0.02 | +100 |
| Manganese | mg/L | <0.01 | 0.13 | +1200 |
| Selenium | mg/L | <0.005 | <0.01 | +100 |
| Zinc | mg/L | 0.06 | 1.1 | +1733 |

The source water also has very low conductivity (46 us/cm), slight iron (0.04 mg/L) and comparatively low alkalinity (14 mg/l), Calcium (1.7 mg/L), Magnesium (2.2 mg/L) Potassium (0.6 mg/L) Sodium (5.0 mg/L) and Chloride (7.0 mg/L)

The method for treating the septic wastewater involved pumping 600L of septic water straight from the septic tank into a 1,000L IBC and then cycling this septic wastewater through a 2" MEA water conditioner for a period of about 60 minutes. That is, septic water was pumped from the IBC through the MEA device and returned to the IBC. After about 30 minutes of cycling a dense white gas started to emit from the top of the IBC and continued for about 15 minutes. This gas is assumed to be a range of gasses comprising methane, sulphur, nitrogen, hydrogen, etc. Further tests of this process will be undertaken to test the nature of the gas.

The organic solids from the septic water settled to the bottom of the IBC and all septic smell was eliminated from the resulting water within 30 minutes. Also, the smell was not detected after 2 hours of starting this process and no smell was evident after 3 months.

The following table describes the comparison between the raw septic water and water after treatment through the MEA (magnetic) device. The chemical and mineral tests were undertaken by Sydney Analytical Laboratories on 17 September 2014.

| Description | Measure | Raw Septic Water | MEA device results | % Change | Standard Industry achievement | Comments |
|---------------------------------|---------|------------------|--------------------|----------|-------------------------------|--|
| pH | mg/L | 6.5 | 6.8 | + 0.7 | NA | |
| Biochemical Oxygen Demand (BOD) | mg/L | 730 | 460 | -37 | -20 | Significantly better than most existing technologies |
| Chemical Oxygen Demand | mg/L | 1310 | 470 | -64 | -20 | Significantly better than most existing technologies |
| Total Organic Carbon | mg/L | 340 | 265 | -22 | | Significant change |
| Nitrate NO3- | mg/L | <0.01 | <0.01 | nil | | |
| Nitrate NO2- | mg/L | 2.9 | 1.1 | -62 | | Significant change |
| Ammonia NH3-N | mg/L | 61 | 69 | +13 | | |
| Phosphate PO4 | mg/L | 69 | 35 | -49 | | Significant change |
| Eh | mV | -180 | -260 | -44 | | |
| Total Suspended Solids | mg/L | 800 | 87 | -89 | -50 | Significantly better than most existing technologies |
| Arsenic | mg/L | <0.01 | <0.01 | nil | | |
| Barium | mg/L | <0.1 | <0.1 | nil | | |
| Cadmium | mg/L | <0.001 | <0.001 | nil | | |
| Chromium | mg/L | 0.03 | 0.02 | -33 | | Significant change |
| Copper | mg/L | 0.05 | 0.02 | -60 | | Significant change |
| Lead | mg/L | 0.02 | <0.01 | -50+ | | Significant change |
| Manganese | mg/L | 0.13 | 0.12 | -7 | | |
| Mercury | mg/L | <0.0001 | <0.0001 | nil | | |
| Selenium | mg/L | <0.01 | <0.01 | nil | | |
| Zinc | mg/L | 1.1 | 0.24 | -78 | | Significant change |

In the previous table on page 17, the restructuring of the previous de-structured, septic water through a Phi'on water device (2'') is a clear demonstration that structured water provides the syntropy force to revitalise the water towards its natural or balanced state (uncontaminated). This state can be expected to accumulate over time as the syntropy energy in the water accumulates and changes the vital properties of the water, eg. BOD, COD, suspended solids, and the ratio of zinc to copper, etc.)

Pathogenic microbes

Laboratory tests have been conducted to test for the reduction in E. coli (pathogenic microbe) in various waters after treatment through a MEA device. These tests were undertaken independently by accredited government and commercial laboratories. The results include:

1. Comparison of water drawn from a creek and passed through a 1 and ¼" MEA device and the water drawn from the kitchen tap after passing through the device. The E. coli count at the creek was 250 faecal coliforms (cfu/100 ml) and was reduced to 2 at the kitchen tap outlet. This test was undertaken by laboratories at Southern Cross University, NSW (14 Nov 2013)
2. Comparison of wastewater from a piggery and water after it had passed through a 2" MEA device. The wastewater had 2,178 faecal coliforms (cfu/100 ml) and only 1 in the water once it had passed through the device. This water was tested by the Tweed Laboratory Centre of the Tweed Shire Council, NSW (12 Mar 2014)

Clearly, these results are significant, and while preliminary until further tests confirm this result with other smaller devices, these results indicate the capacity of the devices to restructure water into a coherent, life affirming and natural structure form.

Spring Water Treatment

Resonate Research Pty Ltd was asked by Beloka Water (Australia) to test ways to raise the pH of their still spring water for potential markets for more alkaline minerals in the water, and a slightly more alkaline pH. The Beloka spring (still) water has a pH (as measured by a Resonate Research meter) of 6.5, which is about the pH of most natural waters. This water is listed in the top 100 fine waters of the world (***Fine Waters: A connoisseur's guide to the world of premium waters** by Michael Mascha*)

Resonate Research used concentrated seawater to raise the pH.

1. Sample 1: 1.9ml of concentrated seawater (per 750ml) was added and it raised the pH to 7.5.
2. Sample 2: 4ml of concentrated (per 750ml) and it raised the pH to 7.6.
3. Sample 3: 1.9ml of concentrated seawater (per 750ml) was added to the water solution and was then vortexed using the MEA bottle top device (to restructure the water) The pH settled at 7.8.

Resonate Research concluded that:

1. The MEA water devices have a significant effect on raising the pH of this water after alkaline (electrolyte) minerals from concentrated seawater were added.

2. There was no significant change in the taste of the water and the result was deemed acceptable for the market.
3. Seawater has every mineral known to man and has high electrolyte values (ie. very good for human health: see https://en.wikipedia.org/wiki/Water-electrolyte_imbalance) The negative voltage in the Beloka water after concentrated seawater was added raised the pH by 3 fold (ie. from 7.5 to 7.8), perhaps by making the alkaline minerals (Ca, Na, K, Mg, Rb, Sr, etc.) more bioavailable and increasing H⁻ (negative) ions in solution. **Note:** *pH is the negative logarithm of the hydrogen ion concentration: $pH = -\log [H^+]$ That is, a pH of 6 is 10 times more acidic than a pH of 7.*
4. Increasing the concentrated seawater solution above 1.9ml for 750ml of water has no significant or added advantage for increasing the pH value to more alkaline.
5. For more information see: <http://www.seafriends.org.nz/oceano/seawater.htm>, and <http://www.traceminerals.com/trace-minerals/why-you-need-ionic-minerals>

Food and other plant applications

Research by Resonate Research since 2012 has demonstrated that the negatively charged water produced by the MEA water conditioner devices has a natural and unique association with microbes (eg. soil water, and the gut of animals and humans) in the transport of nutrients. That is, when negative charge water is added to soil biology, the uptake of nutrients to a plant can be 2-4 folds greater. Resonate Research Pty Ltd has measured at least a doubling in food production, and at times up to a 4 fold increase.

For example, the images (page 20) of the vineyard (Half Moon Vineyard, Mongarlowe, NSW, Australia) show very healthy plant foliage albeit that they grow on very poor soils with low nutrient availability. The size of plant leaves trebled, and grape bunches doubled in size along with grape numbers. Consequently, grape tonnage doubled (from 5 to 10 tonnes) in 2015 due to the use of a 2" water conditioner and the application (fertigation) of Resonate Research soil biology (Catalyst) to the water. There was no loss in grape juice quality.



Similar results have been achieved with other food types, eg:



The images above are of a beetroot grown with MEA (negatively charged) water and weighing 1.5kg and a bunch of table grapes also grown with MEA water and containing 375 grapes.

Below are other examples of root vegetables that have been grown with negatively charged water from a MEA water conditioner. These foods have high nutrient density (measured with a BRIX meter) and reached a size and quality (not woody in texture) that is evidence of the potential for vegetables when grown with MEA water and Phión soil biology. The image on the right shows that when cabbages are grown with negatively charged water there is little or no insect attack.



Food production is an integrated approach that combines negatively charged water, beneficial soil biology (added as an inoculant) and the use of compost (including organic waste recovered from wastewater treatments).

Some trials on the use of MEA water from the bottle top device to water roses have been undertaken and the following photographs (page 21) demonstrate that the size and health of the roses increased considerably after application of the MEA water.

These results are consistent with measurements and observations by Resonate Research with flowers, fruit, and vegetables since 2012. In all cases a plant increases its potential to express size, nutrient density, form, and health (disease free) when watered with MEA water, and this potentially increases when biology (and carbon in the form of compost) is added to the growing area.



Clearly, there is an opportunity to use the MEA water devices in a wide range of applications, including flower production, viticulture, horticulture, vegetable production, etc. to increase food and plant health in a manner that is largely disease free and nutrient dense.

Other opportunities will exist with the use of Phi6n soil biology. In the images below there is a comparison of a portion of a paddock comprising pasture grasses before and after treatment with Phi6n biology (including copper sulphate to improve copper deficiency and the uptake of phosphorous)



After treatment with soil biology



Before treatment with soil biology

The irrigation of crops and pastures with negatively charged water will always improve production results. Similar production results can also be achieved with forestry.

Application of biology through a venturi to a MEA water conditioner

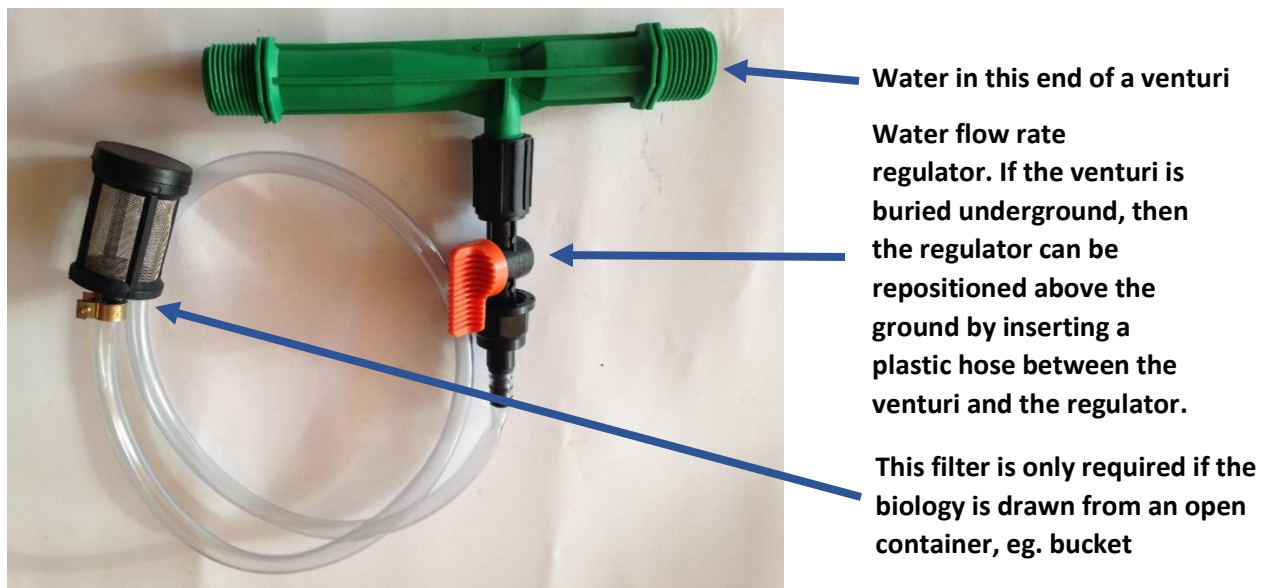
This scheme (described below) can be used in small to large scale operations of water and biology delivery to plants and soil. Further details on the installation of the MEA water devices are in the Paper titled: *Installation of the MEA Water Devices*.

The venturi (see image on the next page, 22) is installed prior to the input end of the MEA water conditioning device and at least 1m (metre) before the inlet of the device.

The venturi is attached via a plastic hose to the tap of the container that holds the biology. This container would be mounted at least 1m (metre) above the ground to provide sufficient head of water flow to the venturi. The tap on the container controls water flow (on or off) to another inline tap (on the hose between the venturi and the biology container) that regulates the rate of water flow (ie. drops per minute: 20 drops equal 1mm of volume) to the venturi/MEA water device, and hence to the soil or plant.

This set-up was installed in a Chilli trial in Handan, China. The purpose of the trial was to test the increase in Chilli production using MEA negatively charged water and Phi6n developed soil biology. The biology was fed into the water line via a venturi before the water conditioner device (see images next page)

The trial involved two (2) plots with one plot as a control (no MEA water and no biology applied) and the other plot of equal number of plants had MEA water and biology



Water through the venturi flows from the short end of the venturi (as shown above).



The image above shows the venturi installed in line with the MEA water device at Handan, China. The system is tested prior to covering in the trench of the system to be buried.

Fish production and health in structured water

Phi'on has supplied water devices for testing results in ponds for fish production (eg. trout) and for assessment of results in aquariums.



Test results have demonstrated that fish that are kept in structured water (ponds and tanks) show the following changes, along with changes in the water and habitat conditions:

- The water became clearer and algae disappeared
- Fish colour improved, ie. vividness
- Fish activity improved and was sustained
- Reproduction rates improved
- Fish diseases and deaths dropped significantly

These results can be accounted for due to the increased oxygen levels in the water and a water environment that eliminates pathogenic microbes and reduces suspended materials.

Syntropy in Phi'on structured water

Phi'on water device technology has a capacity to produce syntropy drinking water and grow food with a high syntropy expression that are critical forces in sustaining good cellular health and longevity.

By way of contrast, the growth of **chemical farming and processed food** since the 1950's has had a significant impact on cell health and therefore life quality or wellbeing. The other entropy forces acting in parallel against human health are:

- The introduction of **synthetic chemicals into foods** as preservatives, emulsifiers, taste enhancers, etc.
- The introduction of **toxic chemicals into drinking water** as fluoridation and chlorination, combined with chemical run-off from farming lands
- The escalating **propensity of people to consume both pharmaceutical drugs (including vaccinations) and recreational drugs**, whereby both have severe side effects that reduce or subdue the body's natural syntropy forces
- The **lack of contact that humans have with the syntropy forces of the natural environment**, including the full spectrum (ROYGBIV) of sunlight energy
- The **lack of availability and growing of fresh, organic food as a staple diet.**

These above-mentioned factors are causing significant cellular toxicity, along with increasing life stresses that lead to entropy or cellular decay; and this is the pathway to disease. Unfortunately, the medical system (ie. the General Practitioner: GP) is not equipped with the knowledge to advise on **solutions that are syntropy based**, such as, good food choices, nutrition, water quality, life-style choices, etc. A GP can only, and legally prescribe a synthetic drug, and this form of **solution is entropy based** due to the side effects and toxicity of drugs to cells. Most people do not assess the risk of taking pharmaceutical drugs mainly due to their total trust in the doctor and poor health and wellbeing education throughout life. For example, most people have no idea about the serious effects of dehydration, radiation, and the constant use of processed or fast food.

It is for these reasons that a new approach to health is required to enable all people to have access to negatively charged, structured, syntropy water for drinking, food production and food preparation. **Syntropy drinking water and the syntropy water in fresh organic food, contains the storage phenomena of forces that drives life to its fullest potential.** Ready public access to syntropy water is the main way to arrest the rapid decline of human health towards chaos. Any improvement in the global status of human health will reverse the inevitable economic and social chaos, particularly in the developed world.

The key question arising from the factors that differentiates the **Phión Syntropy water** device results from other commercial technologies is the fact that the **Phión Syntropy Water permanently retains its negative charge.** The only explanation for this difference is that the **Syntropy Water devices create another time and space dimension to the six-sided crystalline structure in the water, that creates a permanent bond between the water molecules, and this prevents the exposure of the bonding to disorganisation,** ie. prevents entropy, including oxidation.

Summary of structured water values for health

Most natural and wild flowing waters have a negative charge (millivolts-mV). These waters are found in some groundwater sources (mineralised), springs and wild (unpolluted) rivers. The world's **healing water** sources (sometimes called miraculous, magic or energised water) are often discovered in wells, bores and springs where the water is in close contact with the minerals and magnetism of the rocks. These waters are known for their homeopathic and healing effects for animals and humans. What are the properties of water that make it **life affirming** or **healing, and supports vitality in food production?**

Clearly, water is critical to body function as it represents 70% (by weight) of the human body and 80% of cell volume. The science of water is relatively new and largely incomplete, however there is enough science to demonstrate that water with a negative millivolts charge is life-affirming or sustains life. Human and animal cells have a healthy charge of between -25mV to -50mV. The cells of an injured part of the body will rise to a negative (-) 50mV to accelerate healing and make new cells. This change in polarity facilitates the movement of nutrients to

the area that requires healing. **Therefore, we can assume that to heal the body you require a capability (ie. negatively charged cells and nutrient availability in the body) to deliver a negative charge (-) 50mV on demand.** Also, we are designed to eat food that is vital (ie, fresh, organic and within 60 hours of harvest) to get the life-force energy (syntropy) within the cells of the food.

Have you ever noticed how good it feels to walk barefoot on a sandy beach or in a forest? There is a reason for that, and it is called the grounding effect. As humans we are by nature designed to have a daily connection with nature. Many cultures have this daily connection, however modern, Western society has little or no contact daily with nature. The reason for this sense of well-being when we have daily contact with nature is that you are receiving a surge of **potent healing negative electrons (syntropy) from the ground.**

The earth has a slightly negative charge, so when you stand barefoot on the ground, electrons from the earth flow into your body, giving you a virtual *transfusion* of healing power. When you drink negative voltage (electron charged) water the effect is the same, albeit that it does not replace our in-built requirement for regular contact with nature. So why do we need this constant grounding with nature, the need to eat whole natural foods and drink negative voltage water?

- Free radical stress from exposure to mercury pollution, cigarettes, insecticides, pesticides, trans fats, radiation and irradiation of food, and many others, continually deplete your body of electrons and oxygen
- Grounding effectively alleviates inflammation because it thins your blood (improved viscosity and greater oxygen flow) and infuses you with negatively charged ions through the soles of your feet
- When you are grounded to the earth, the negatively charged electrons you receive increase the structure of the water in your cells
- Living or energised water is **negatively charged water**. This water can hold energy, much like a battery, and can deliver energy too. When you ground, you are charging every single cell in your body with energy your body can use for self-regulation and self-healing
- Surfaces that will allow your body to ground include: sand on the beach, grass, bare soil, ocean and flowing freshwater water, etc.

Healthy kids and adults have a cell charge in the order of -25 to -35mV. Once cell charge falls to -15mV and below then tiredness, sickness, infection and chronic disease arises. A healthy cell charge (negative) can be sustained through natural processes, such as early morning sunlight, nutrient dense food, drinking structured (unpolluted) water (eg. water from a pristine source and with no added chemicals such as fluoride and chlorine), walking barefooted on the beach or on grass, body immersed in moving water (eg. ocean, river, rain, shower), etc. There are meters to measure body voltage, and these meters can be found on the Internet.

A healthy cell charge can be altered to an unhealthy, low negative or positive charge by exposure to air pollution (most large urban environments), junk food, chemically contaminated

water, and reverse osmosis water (acid or dead water), moderate to heavy consumption of carbonated drinks and alcohol, over-cooked and processed food, caffeine and moving air from air conditioners, fans, hair dryers, etc.

Negative charge from a cell will always move to the area (cells) of lowest negative or a positive charge. This energy transfer process is known in physics as entrainment. For example, healthy people transfer negative energy to sick people through hugging or touching, and lovers or couples can get into cell-energy equilibrium from energy transfer (one person to the other) through physical contact, eg. holding hands, hugging, etc. Therefore, certain professions involved in close physical contact with clients (eg. physiotherapists, osteopaths, massage therapists, etc.) are always at risk of losing negative charge from their body to their clients. Animals regularly give negative charge to people then go outside to recharge. Any contact with nature, eg. trees, rocks, natural waters, etc. will enable negative charge from the earth to transfer to cells in the body and positive charge from the body to transfer to the earth. Therefore, such contact with nature feels so good for your wellbeing. This activity is called grounding.

The increase in sickness and disease since about the 1950's is directly related to the loss of negative cell charge from the cells of people and animals. This has been largely caused by contamination of air, soil, water, and food through chemicals that have caused cell toxicity. Also, people have a much higher propensity to take pharmaceutical drugs rather than use natural healing approaches. So how do you tell if you are at risk with a low cell charge? A simple test is to measure the pH (potential hydrogen) of your urine (cell water) and it should be between 6.5 and 7.8. It is advisable to get a good quality digital pH meter for this task. If the measurement is below 6.5 then your healing capacity has been limited and action needs to be taken to raise urine pH well above 6.5. There is ample scientific evidence to show that cancer will occur with prolonged cell water charge polarity of between -15mV and +30mV. However, while ageing is inevitable, the **process of ageing and disease are vastly hastened by adverse environmental forces that include a multitude of lifestyle and diet factors**. There is no single factor (eg. genes) in aging or the onset of disease.

Since our bodies are ultimately constructed from the *natural things* (ie. food, air and water), and obey very strict natural laws such as the well-known principle of chirality (ie. right and left handedness or spin), and the fact that all amino acids in our body turn a beam of polarised light in the left-handed direction (eg. L-lysine) and sugars to the right-handed direction (eg. D-ribose), you cannot simply create biologically active, synthetic drugs arbitrarily, because any mistake in right or left handedness (or direction of spin) could be averse to life. **Nature, therefore, provides the only unique and biomolecular architecture of irreproducible intelligence and complexity, from which life-affirming food and water exists for living species.**

Your body is a self-regulating and self-healing system and you must have electrons (-) available to sustain your cell life, otherwise the cells will die and your organs and other life

support systems (eg. liver, heart, immune, etc.) will malfunction. The human body requires oxygen to move electrons and depletion of body oxygen through poor diet and lifestyle is a pathway to disease. Everyone needs the ability to achieve cell charge of -50mV to -70mV at the point of healing, otherwise you cannot achieve healing. This low cell charge (negative) means that injuries or infections will not repair properly, and you could develop chronic diseases. The remedy is not in the use of pharmaceutical drugs that in the main decrease cell charge, but in a diet with nutrient dense food and drinking negatively-charged water. That is, you need **negative voltage food and water**. Also, the build-up of toxins in the body is a major factor in polarity change and loss of negative charge in cells. Your body will naturally detox with a healthy cell charge, otherwise you may need to use a natural detox procedure.

Scientific papers since about 2000, demonstrate that **water and biological coherence is fundamental to our energy systems and to optimise health, vitality, and longevity**. The science of water structure provides insight to the liquid crystalline molecular fabric that interconnects all parts and processes within living things. This living matrix gives a substantial basis for the term *holistic* and a scientific basis for the alternative therapies for humans and animals, including **homeopathic approaches using energised water**. The use of grounding techniques in nature and drinking negative voltage water has an anti-oxidant effect on the body by reducing oxidation (loss of oxygen) and therefore increases the flow of electrons through the body.

Water structure and energy (including cell polarity) are more critical to life function than the natural chemical constituents of water. **The living world is an in equal partnership with the biological molecules and water. Your body, like everything else in the universe, is electric.**



The human body is a network of neurons that provides the electron flow for information to transfer between cell, organs and systems. A team from Brigham and Women's Hospital (2018) has illuminated the connection between microbes in the gut and the crosstalk between immune cells and brain cells. The health of this information flow for regulation and healing is a critical to cell function. Multiple sclerosis and Parkinson's disease are linked to the dysfunction of this network of neurons. The partnership between structured (-) water and microbes is the key to cell communication.

You are your water

Moving forward

Most people can enhance the quality of their life with simple diet and lifestyle changes:

- Grow your own food or select food that is organic (natural) and fresh, and do not cook this food in high heat, because high heat changes the fats and oils in foods to a toxic form
- Drink structured (negatively charged) water, and grow your own vegetables, herbs, and fruit with this water
- Access the full spectrum of sunlight each day when you can
- Pursue love, joy and hope and let go of the *negative* emotions that degrade organs and systems
- Avoid radiation, especially the microwave that emits entropy energy out to 6 metres even when the power point is turned on to the microwave. Also, other forms of radiation from mobile phones, WiFi, and other electrical systems
- Connect physically, emotional, and spiritually with the natural world as often as possible, eg. beach, forest, gardens, parks, animals, etc.

Conclusion

It's the 21st-century and we are now beginning to understand that the process of aging has a direct correlation to our body's cellular depletion of structured (hexagonal) water.

Phión has been testing MEA water devices since 2012, and the results indicate a strong **epigenetic** (environmental) influence of the structured (negatively charged) water on soil microbes (biology) and plants, especially important for microbial activity becoming multi-generational (diversity). That is, there was a significant effect of the presence of the MEA negatively charged water (ie. like thunderstorm water) on plant growth, eg. uptake of soil nutrients to the plant.

Consequently, the microbes and negatively charged water are the life forces within the soil, breaking down the nutrition in the soil into forms digestible by the plants. If microbes aren't flourishing in the soil, plants will not properly grow, and will become disease-prone and susceptible to viruses, fungus, and insect invasion. There is clear evidence from research trials by Phión that soil health is significantly improved when **structured, negatively charged water is added to microbial formulations**, and sprayed onto the soil and plants (including seeds and seedlings).

Structured water is responsible for the stability of healthy DNA in a cell. When a cell begins to lose its crystalline structure (due to illness or aging), DNA integrity of the cell is often compromised and light emission from the nucleus is either diminished or excited (a state of disharmony or incoherence). The integrity of cellular water is essential for good health or body regulation and healing. Any disease means that proteins are not working in that organ, and the water inside the cell, and near the protein, is not in a structured form. That is, the potential of

the Krebs Cycle to generate the precursors of amino acids and lipids to build proteins, and therefore produce energy; has been compromised.

In this situation, the primary action available is to restore order to the **cell water**. Much of the water in a healthy human body is in a liquid crystal, six-sided, structured form, as well as in the collagen fibres and cellular membranes. The body's tissues (grouping of cells into organs and systems, eg. muscle, nerve, or connective tissues) work cooperatively with the structured water to create an information network that reaches every cell. This allows instantaneous transfer of signals and other biological information for regulation and healing.

Quantum coherence of water is really what makes life possible. It could also account for other strange phenomena such as non-thermal electromagnetic field effects on biological systems, and possibly homeopathy.

Phión, MEA water is one way to reinstate the structured water (quantum coherence) in cells to **improve vitality, prevent disease, increase consciousness**, and have the potential to slow down aging. However, full understanding of the intricate dynamics of water in sustaining the energies of life may always remain a mystery.



The most beautiful experience we can have is the mysterious. It is the fundamental emotion that stands at the cradle of true art and true science (Albert Einstein)