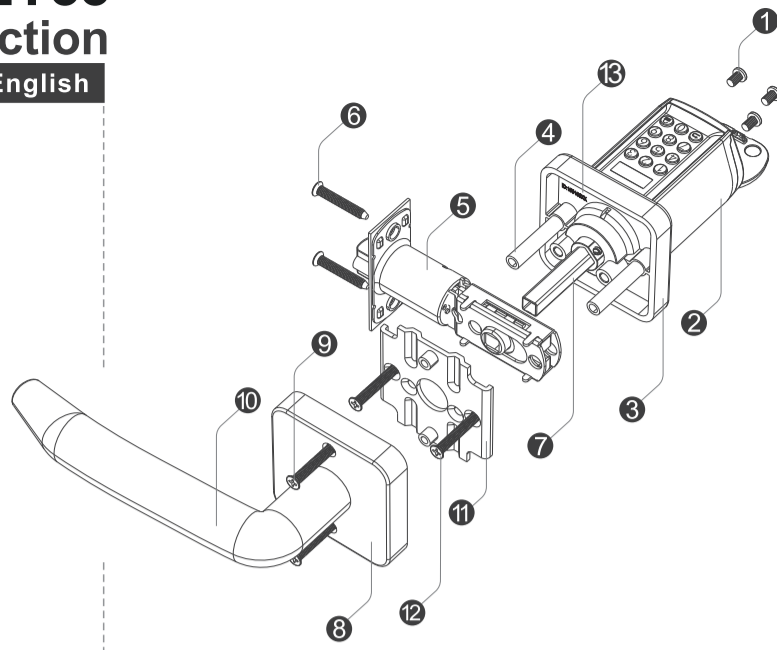
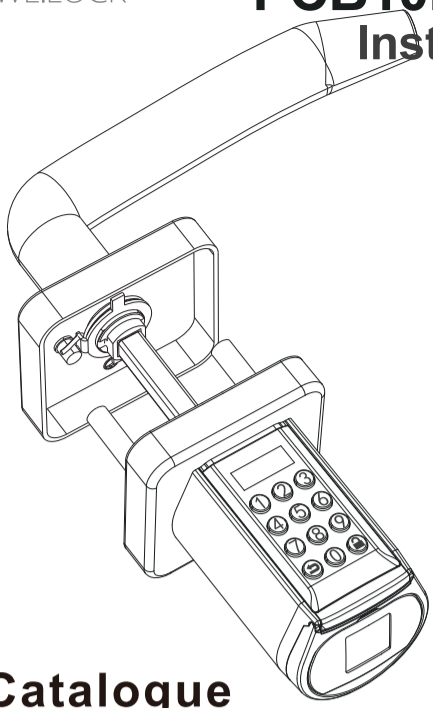


# PCB10KEY33 Instruction

English



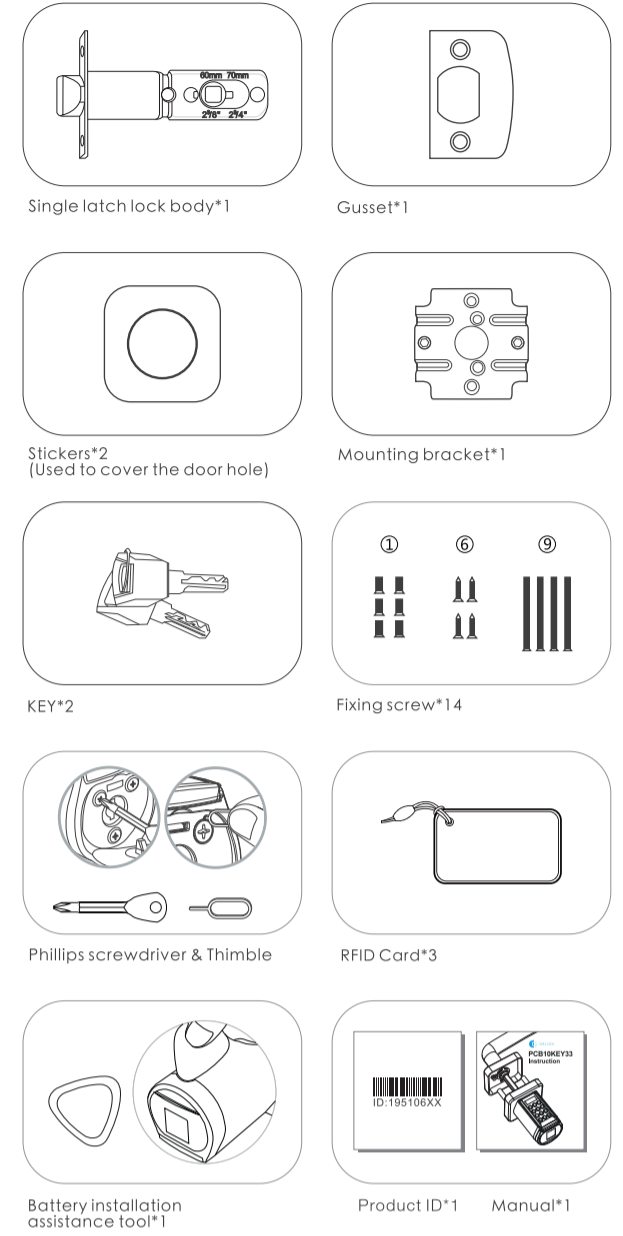
## Catalogue

- Part list figure .....01
- Accessories list(TOOL BOX).....02
- Install battery .....03  
Operating instruction
- Unlock and lock .....04  
Uresetting diagram
- Installation diagram .....05
- Passcode:Flow chart.....06
- RFID card:Flow chart
- Other settings:Flow chart
- Applicable size .....08  
Product Introductio
- Bluetooth activation and login instructions .....09  
Log in to the app
- Bind the device .....10
- Specifications .....11  
FAQ

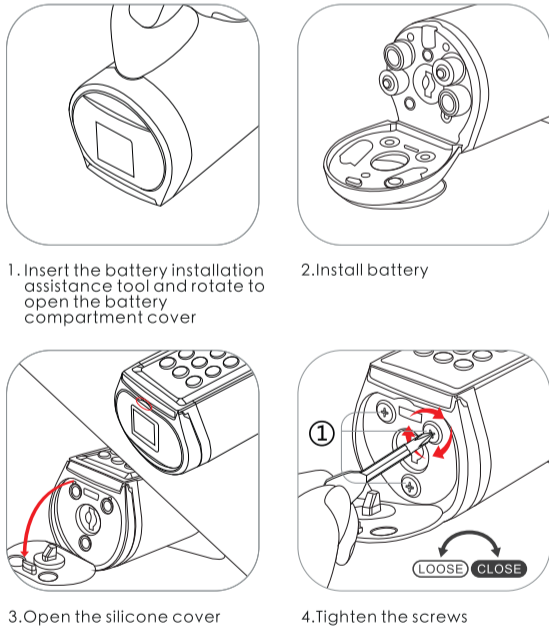
## PART LIST FIGURE

- ① Screws for battery compartment
- ② Front Handle
- ③ Front Panel
- ④ Screw casing
- ⑤ Lockbody
- ⑥ Scerws for lock body
- ⑦ Toggle lever
- ⑧ Rear Panel
- ⑨ Scerws for rear Panel
- ⑩ Rear handle
- ⑪ Mounting bracket
- ⑫ Mounting bracket screw
- ⑬ Product ID

## Accessories list(TOOL BOX)



## Install battery

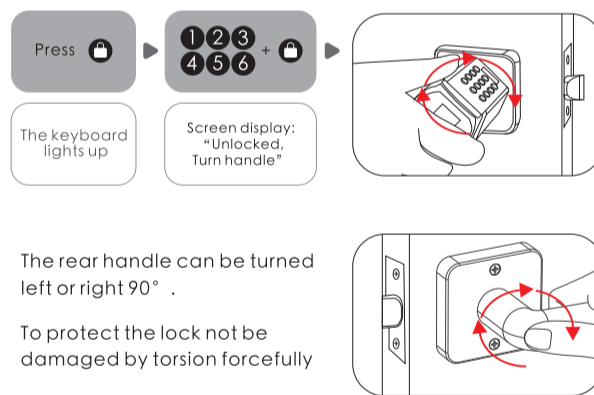


## Operating instruction

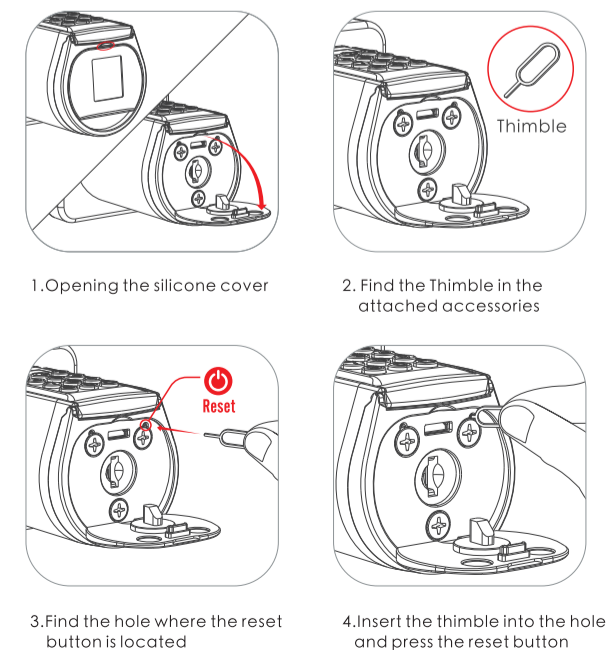
- 1) Enter the wrong passcode 5 times continuously, the system is locked for three minutes and cannot operate.
- 2) Press **⏻** to wake up the keyboard+10 digits temporary passcodeEnter the wrong passcode 5 times continuously, the system is locked for three minutes and the cannot operate.Temporary passcode generation needs to be done in the App.The time on the screen should be the same as the time on the phone,otherwise the temporary passcode will be invalid
- 3) Press **⏻** to wake up the keyboard+swipe the IC cards Swipe the unmatched card 5 times continuously,the system is lockd for three minutes and the cannot operate.Any IC card can unlpock the door in factory state.
- 4) Bind the lock on APP  
Bind the lock on APP via Bluetooth, click "unlock" , and the phone yime will be synchronized to the lock via Bluetooth.

## Unlock and lock

Unlock the door from outside You can unlock the door in any direction

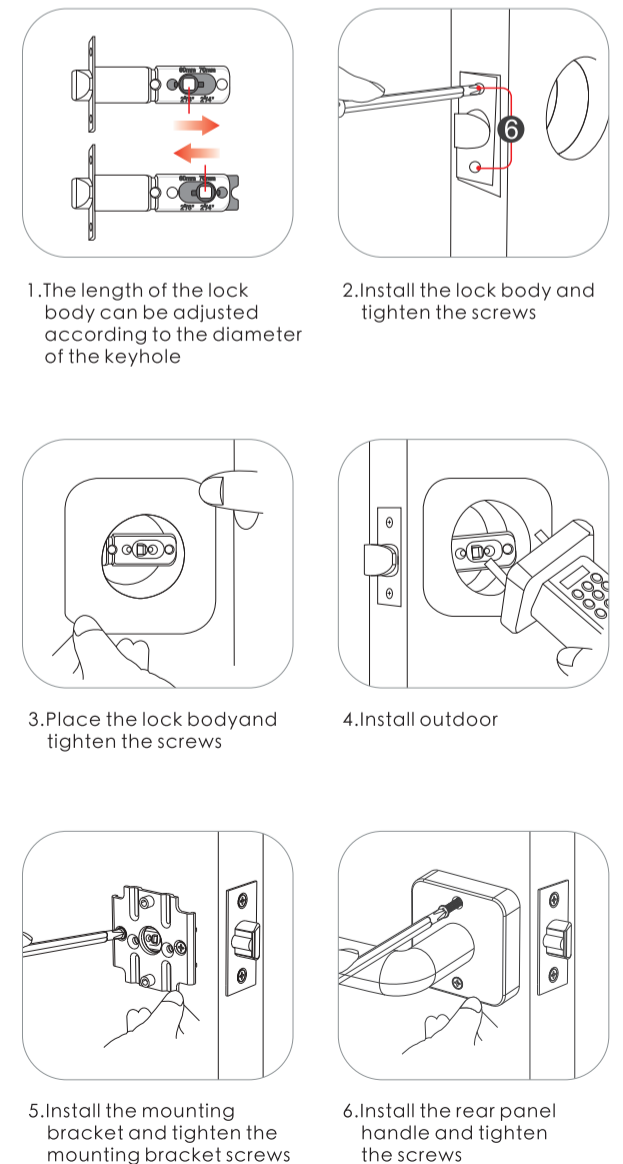


## Uresetting diagram

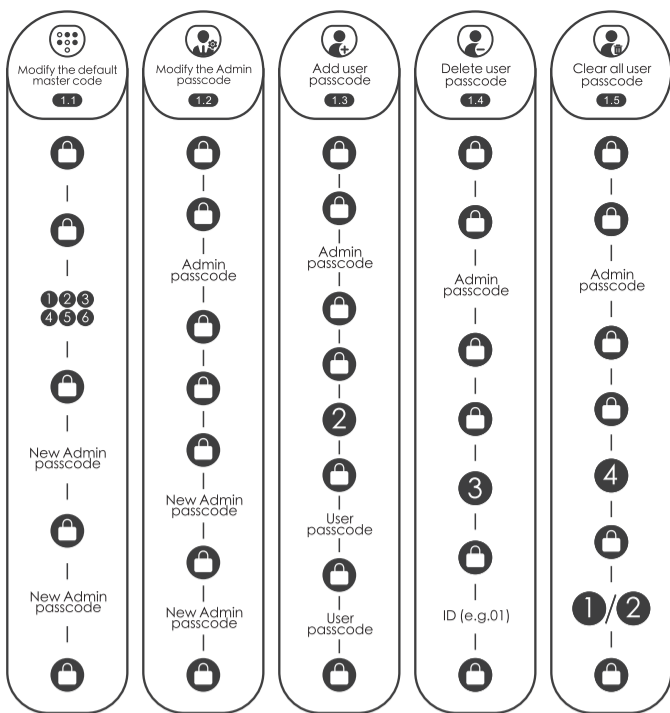


## Installation diagram

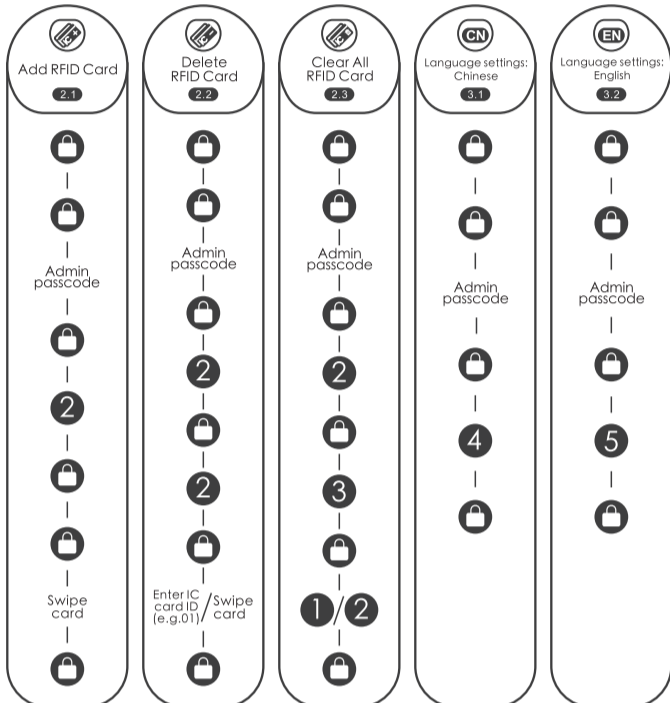
Picture of installation Inward opening door:The inclined surface of the bolt face outwards when installing



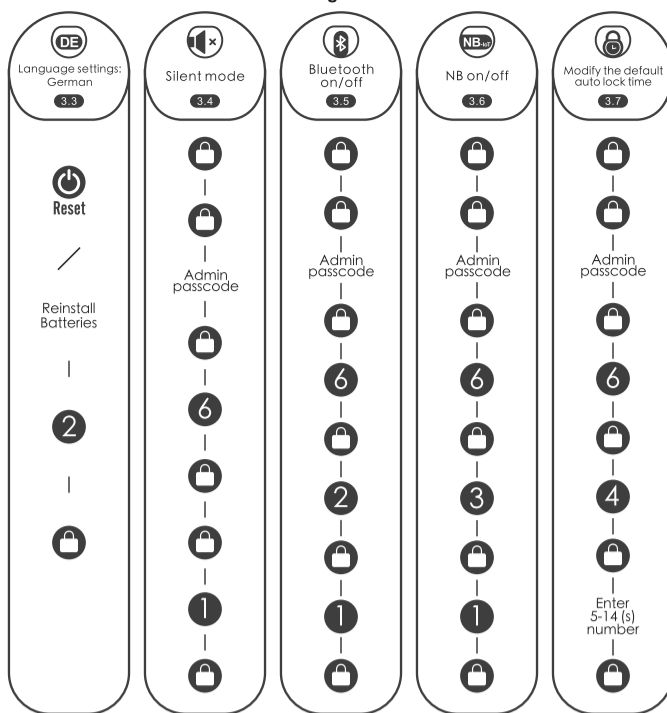
### 1.Passcode:Flow chart



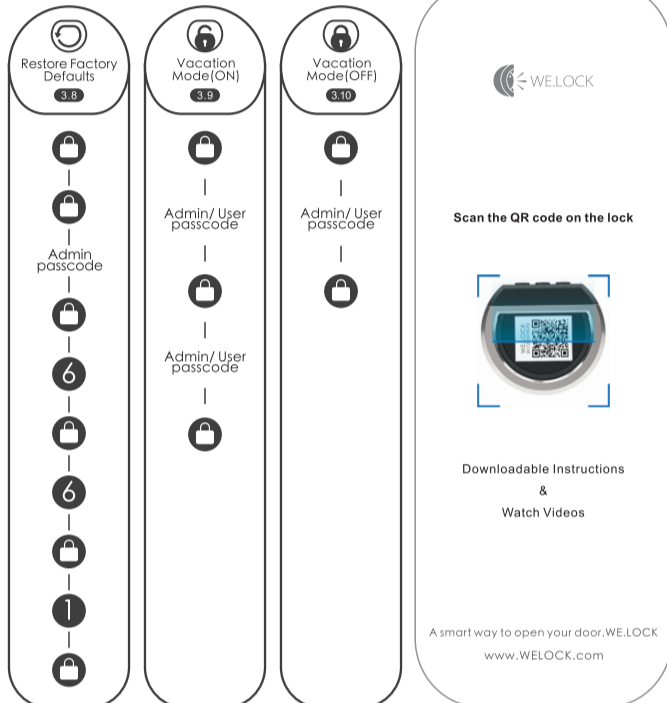
### 2.RFID card: Flow char



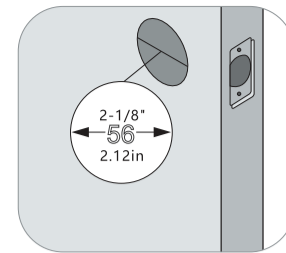
### 3.Other settings: Flow chart



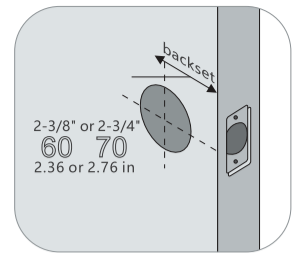
### 3.Other settings: Flow chart



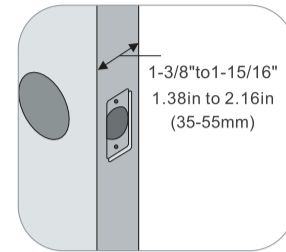
### Applicable size



1.Measure to confirm that the hole in the door is 2-1/8"(2.12in)



2.Measure to confirm that backset is either 2-3/8"or 2-3/4"(2.36or2.76in)



3.Measure to confirm that the door is 1-3/8"to 2"(1.36in to 1.97in)

**Low battery prompt:**

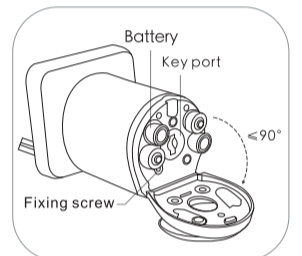
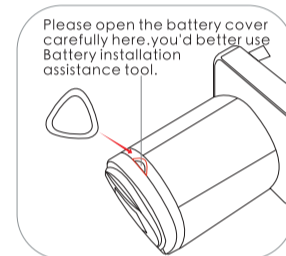
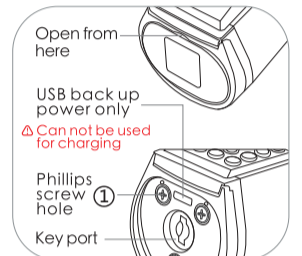
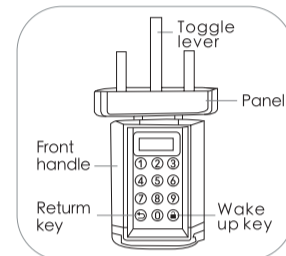
After waking up, the screen displays: Battery Low

After 3 "beep beep beep" beeps, The screen prompts: "Battery Low".

**Battery Low**

Please replace the battery promptly when the above message appears.

### Product Introduction



### Bluetooth activation and login instructions

Scan the QR code on the lock.

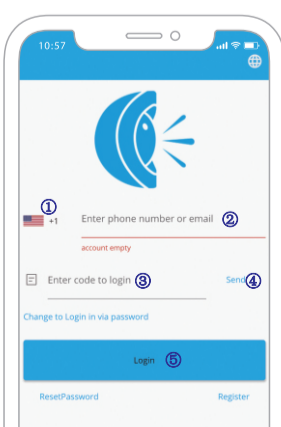


Select "Android/iOS" to download.

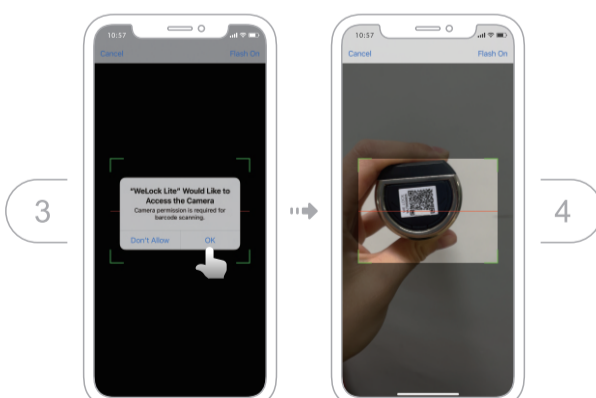
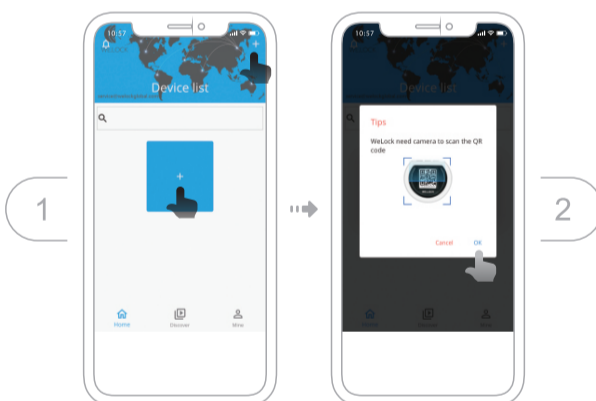


### Log in to the app

- Select your country/region
- Enter the phone number/email to get the verification code
- Click"Send"
- Enter the verification code after receiving the message
- Click"Login"



### Bind the device



### Specifications

Brand	WE.LOCK
Applicable door types	Wooden doors, Interior doors
Adjustable range	1 3/8"to 1 15/16"(35-55 mm)
Operating Temperature	-25°C-60°C
Pressing Cycle Times	100,000 Times
Material of handle	Zinc Alloy
Way to unlock	Passcode / IC card / Bluetooth
Battery Type	4*AAA Battery
Power input	4V-6V
Battery Replacement	Replaceable
Color	Silver/ Black
Battery Life	>1 year

### FAQ

- How often is the battery changed?**  
When the low battery alarm occurs, the battery needs to be replaced in time.
- When will the low battery alarm?**  
The battery is below 20%.
- How can enter scramble code?**  
Enter any number before and after a correct passcode, 30 digits or less.
- How can unlock when the battery runs out?**  
Users can use a mobile power supply to power the lock via a micro USB cable, and then use our App to unlock.
- How can contact customer service?**  
Please contact this email: Service@WelockGlobal.com