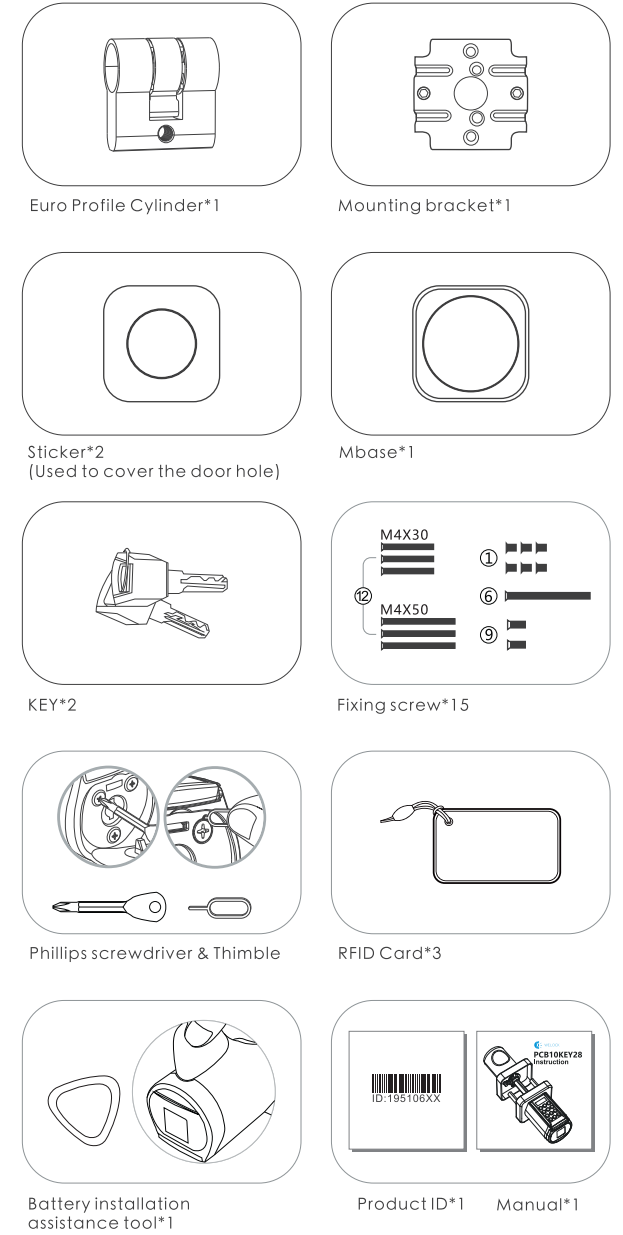


Accessory list(TOOL BOX)



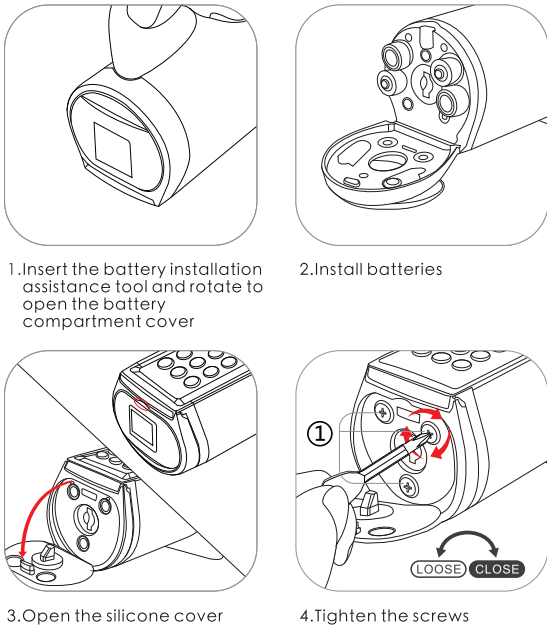
Catalogue

- Part list figure01
- Accessory list(TOOL BOX)02
- Install battery03
- Operating instruction
- Unlock and lock04
- Uresetting diagram
- Installation diagram05
- Passcode:Flow chart06
- RFID card:Flow chart
- Other settings:Flow chart
- Applicable size08
- Product Introductio
- Bluetooth activation and login instructions09
- Log in to the app
- Bind the device10
- Specifications11
- FAQ

PART LIST FIGURE

- ① Screws for battery compartment
- ② Front Handle
- ③ Front Panel
- ④ Screw casing
- ⑤ Profile cylinder
- ⑥ Scerws for profile cylinder
- ⑦ Toggle lever
- ⑧ Rear Panel
- ⑨ Scerws for rear Panel
- ⑩ Rear handle
- ⑪ Mounting bracket
- ⑫ Mounting bracket screw
- ⑬ Mbase
- ⑭ Product ID

Install battery

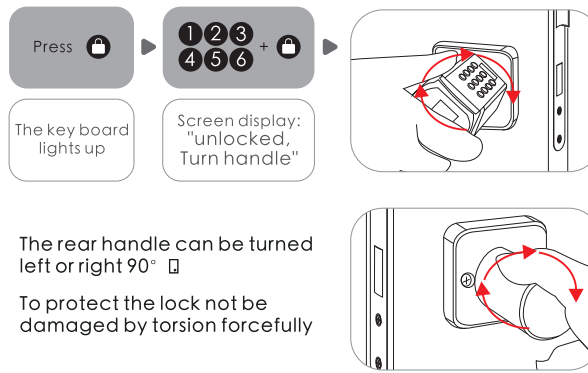


Operating instruction

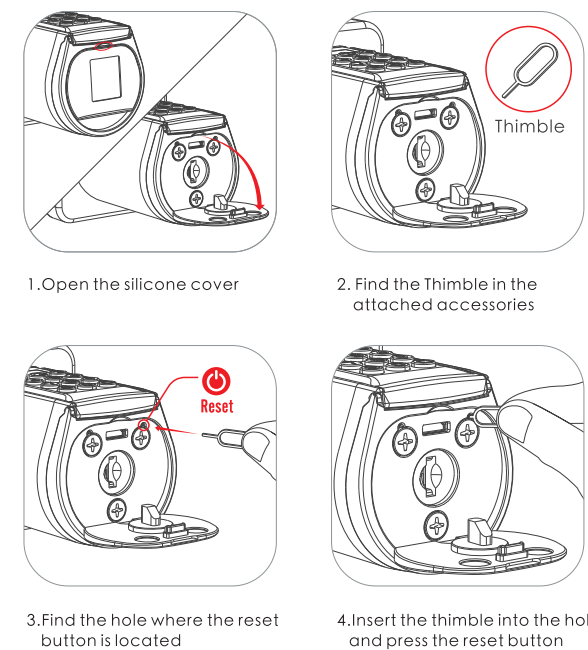
- 1) If enter wrong passcode 5 times continuously, the system will be locked for three minutes and cannot operate.
- 2) Press **⏻** to wake up the keyboard+10 digits temporary passcode.Enter wrong passcode 5 times continuously,the system will be locked for three minutes and can not operate. Temporary passcode generation needs to be done in the App.The time on the screen should be same as the time on the phone,otherwise the temporarypasscode will be invalid.
- 3) Press **⏻** to wake up the keyboard+swipe the RFID cards. Swipe the unmatched card 5times continuously, the system is locked for three minutes and cannot operate. Any RFID card can unlock the door in factory state.
- 4) Bind the lock on APP
Bind the lock on APP via Bluetooth,click"unlock",then the phone time will be synchronized to the lock via Bluetooth.

Unlock and lock

Unlock the door from outside.You can unlock the door from any direction.To protect the door from damage by forceful torsion,the front handle will keep free rotating until the lock is unlocked by correct way.

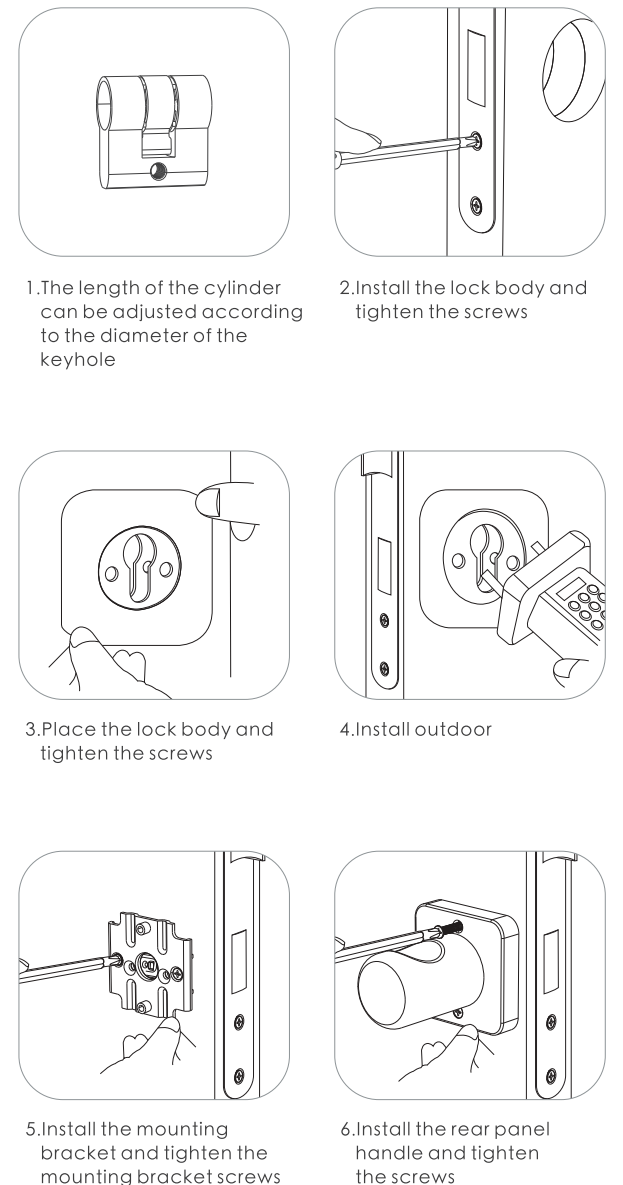


Resetting diagram

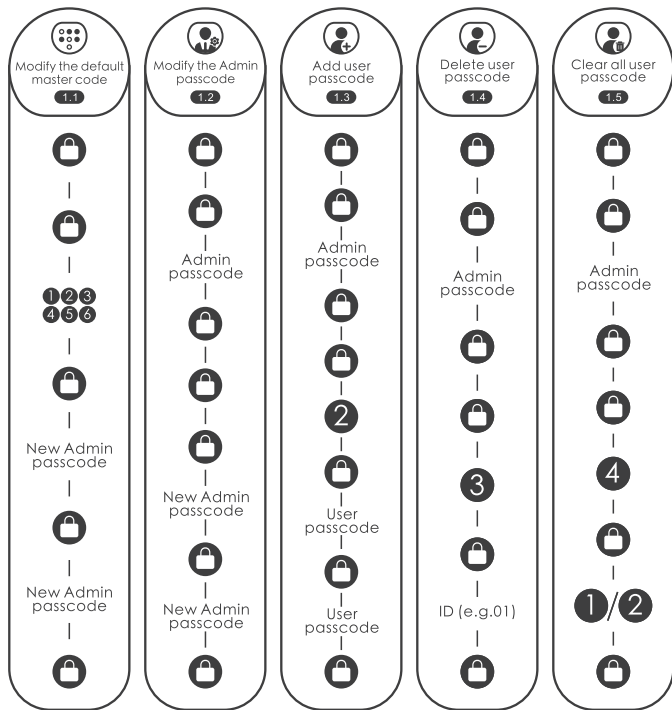


Installation diagram

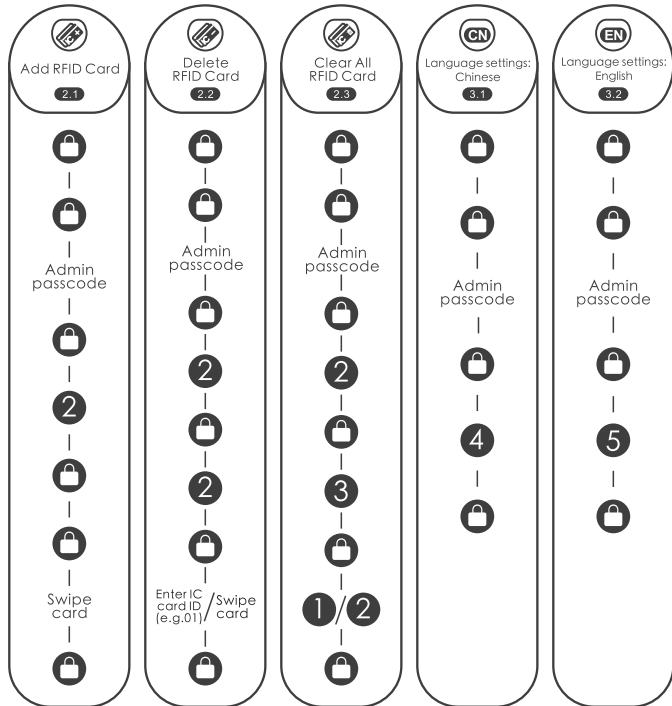
2.1 Picture of installation Inward opening door:
The inclined surface of the bolt face outwards when installing.



1.Passcode:Flow chart

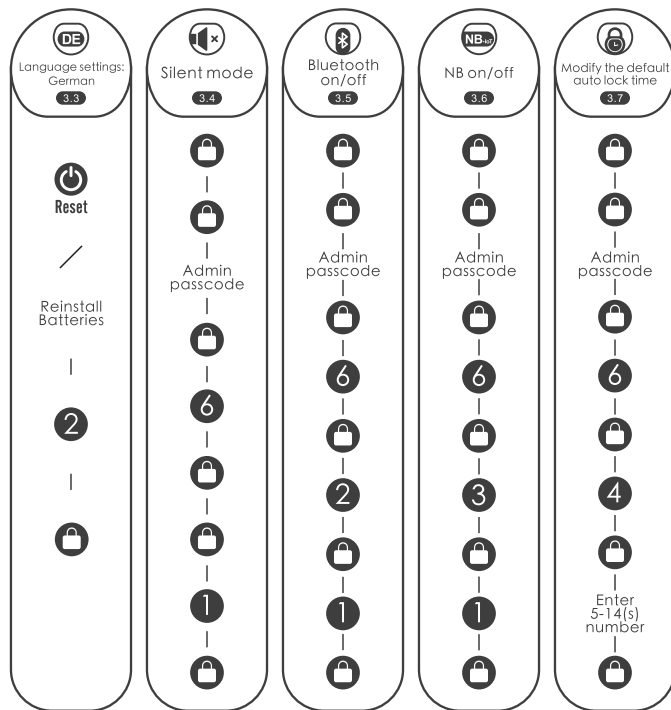


2.RFID card:Flow chart

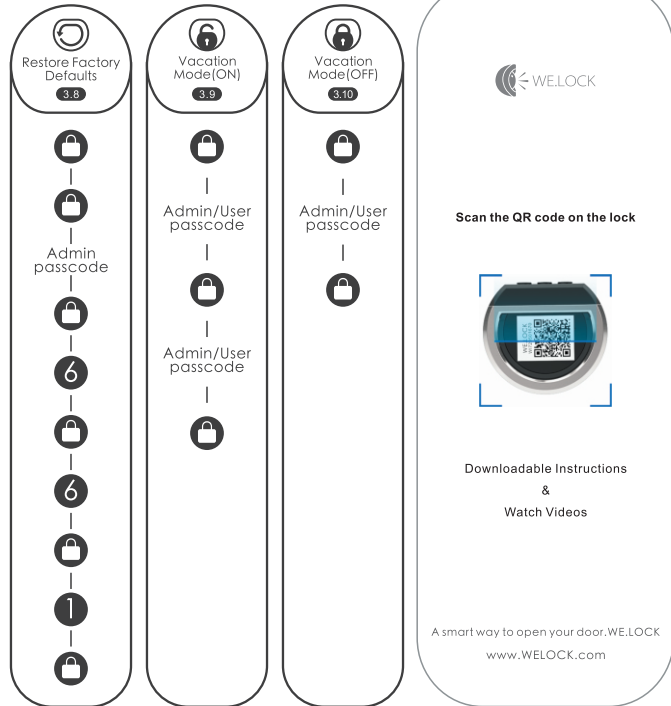


- 06 -

3.Other settings:Flow chart

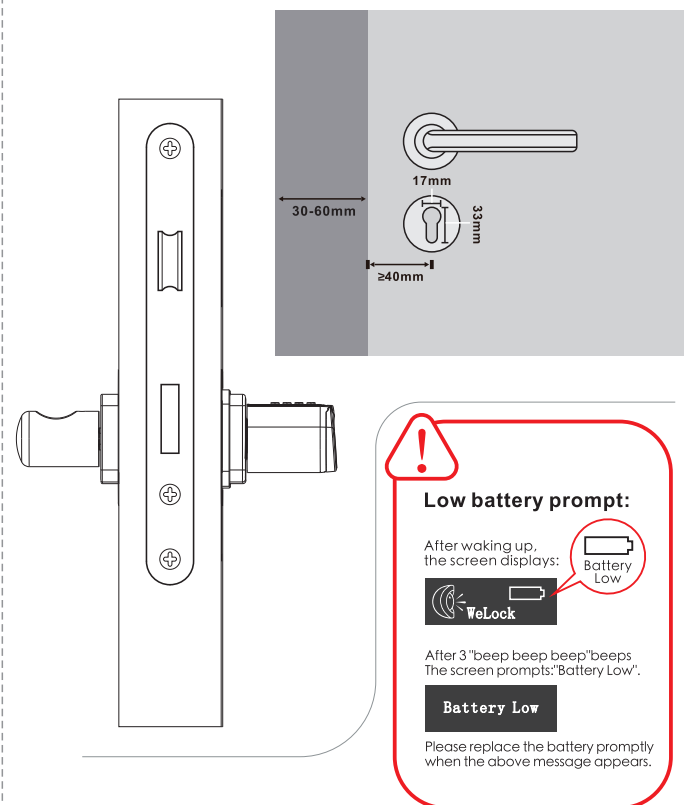


3.Other settings:Flow chart

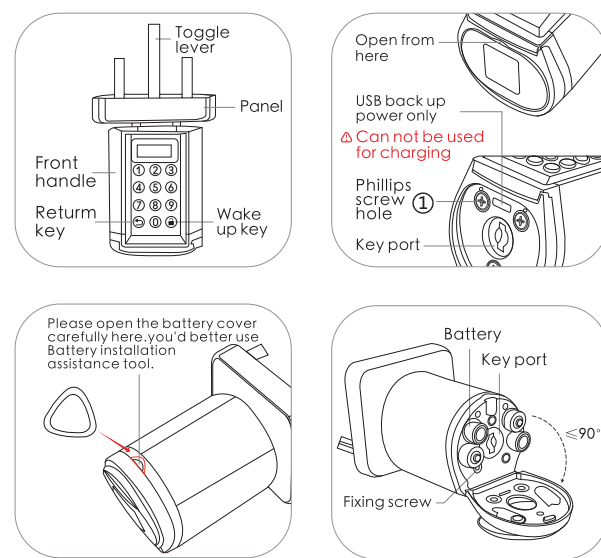


- 07 -

Applicable size



Product Introduction



- 08 -

Bluetooth activation and login instructions

Scan the QR code on the lock

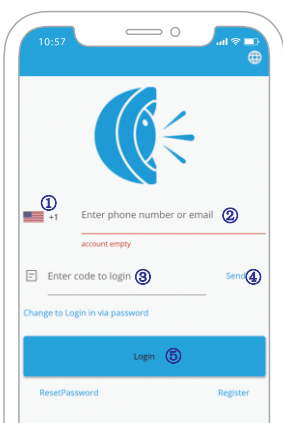


Select "Android/iOS" to download



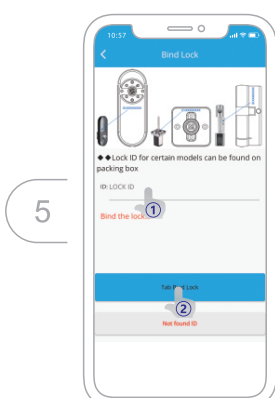
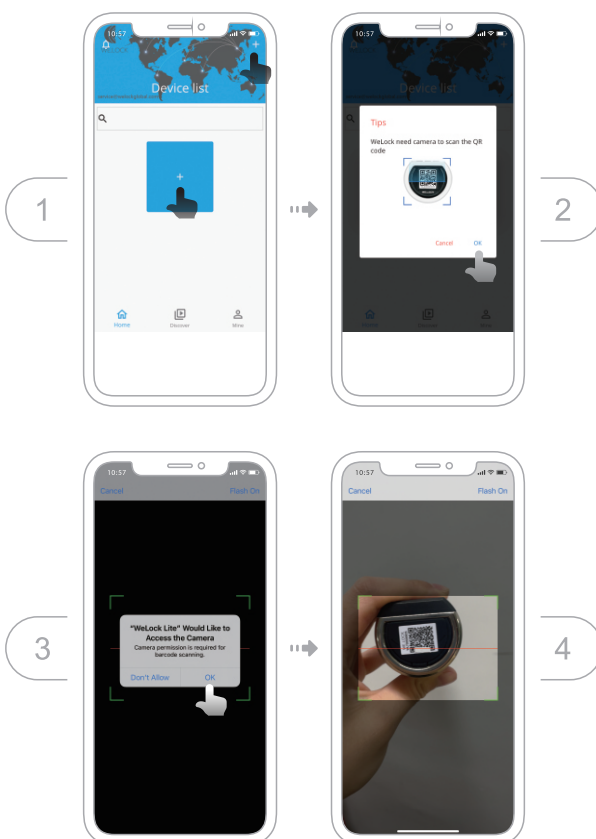
Log in to the app

- 1 Select your country/region
- 2 Enter the phone number/email to get the verification code
- 3 Click"Send"
- 4 Enter the verification code after receiving the message
- 5 Click"Login"



- 09 -

Bind the device



- 10 -

Specifications

| Brand | WE.LOCK |
|-----------------------|-----------------------------|
| Applicable door types | Wooden doors,Interior doors |
| Adjustable range | 1 3/16"to 2 23/64"(30-60mm) |
| Operating Temperature | -25°C~60°C |
| Pressing Cycle Times | 100,000 Times |
| Material of handle | Zinc Alloy |
| Way to unlock | Passcode / Bluetooth |
| Battery Type | 4*AAA Battery |
| Power input | 4V-6V |
| Battery Replacement | Replaceable |
| Color | Silver/Black |
| Battery Life | >1 year |

FAQ

- **When should you replace the battery?**
When the low battery alarm occurs,the battery needs to be replaced in time.
- **When will there be low battery alarm?**
When the battery power is less than 20%.
- **How can you enter scramble code?**
Enter any number before and after a correct passcode,30 digits or less.
- **How can you unlock the lock when the battery runs out?**
You can use a mobile power supply to power the lock via a micro USB cable,and then use our App to unlock.
- **How can I contact customer service?**
Please contact this email:
Service@WelockGlobal.com

- 11 -