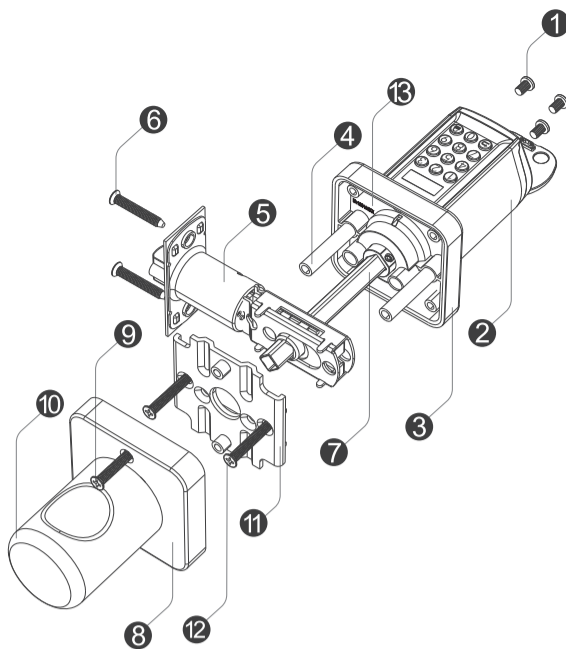


Catalogue

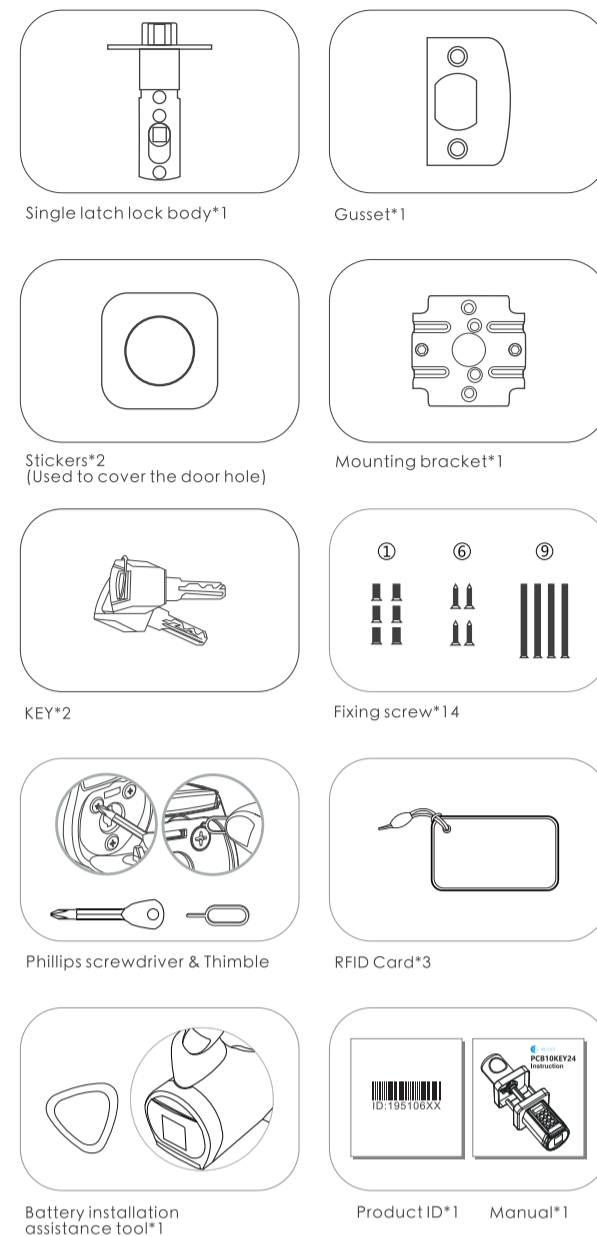
- Part list figure01
- Accessories list(TOOL BOX)02
- Install battery03
Operating instruction
- Unlock and lock04
Uresetting diagram
- Installation diagram05
- Passcode:Flow chart06
- RFID card:Flow chart
- Other settings:Flow chart
- Applicable size08
Product Introductio
- Bluetooth activation and login instructions09
Log in to the app
- Bind the device10
- Specifications11
FAQ



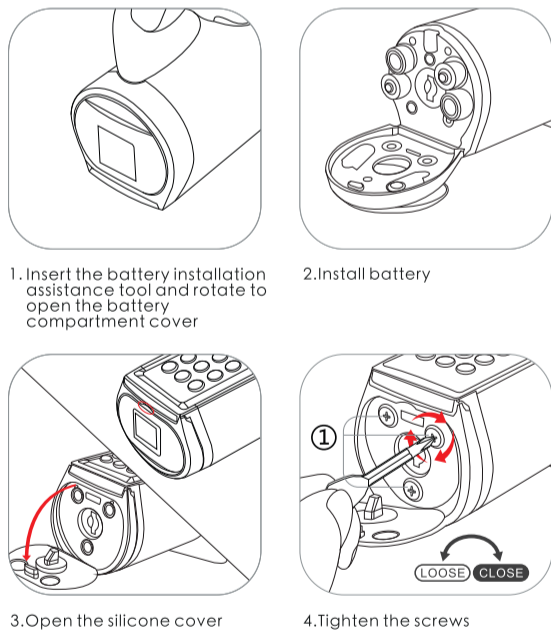
PART LIST FIGURE

- ① Screws for battery compartment
- ② Front Handle
- ③ Front Panel
- ④ Screw casing
- ⑤ Lockbody
- ⑥ Screws for lock body
- ⑦ Toggle lever
- ⑧ Rear Panel
- ⑨ Screws for rear Panel
- ⑩ Rear handle
- ⑪ Mounting bracket
- ⑫ Mounting bracket screw
- ⑬ Product ID

Accessories list(TOOL BOX)



Install battery

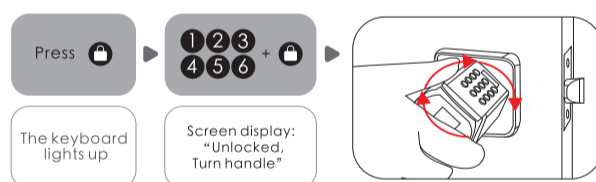


Operating instruction

- 1) Enter the wrong passcode 5 times continuously, the system is locked for three minutes and cannot operate.
- 2) Press **⏻** to wake up the keyboard+10 digits temporary passcode. Enter the wrong passcode 5 times continuously, the system is locked for three minutes and cannot operate. Temporary passcode generation needs to be done in the App. The time on the screen should be the same as the time on the phone, otherwise the temporary passcode will be invalid.
- 3) Press **⏻** to wake up the keyboard+swipe the IC cards. Swipe the unmatched card 5 times continuously, the system is locked for three minutes and cannot operate. Any IC card can unlock the door in factory state.
- 4) Bind the lock on APP. Bind the lock on APP via Bluetooth, click "unlock", and the phone time will be synchronized to the lock via Bluetooth.

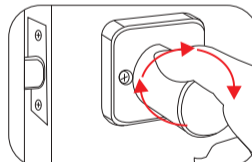
Unlock and lock

Unlock the door from outside You can unlock the door in any direction

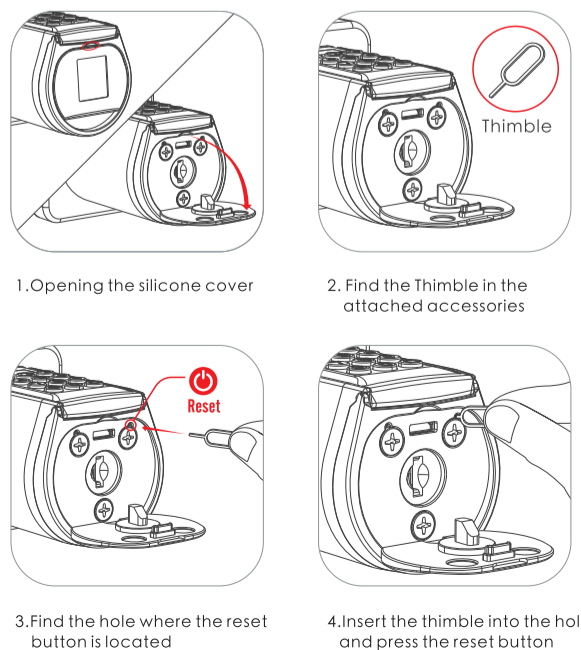


The rear handle can be turned left or right 90° .

To protect the lock not be damaged by torsion forcefully

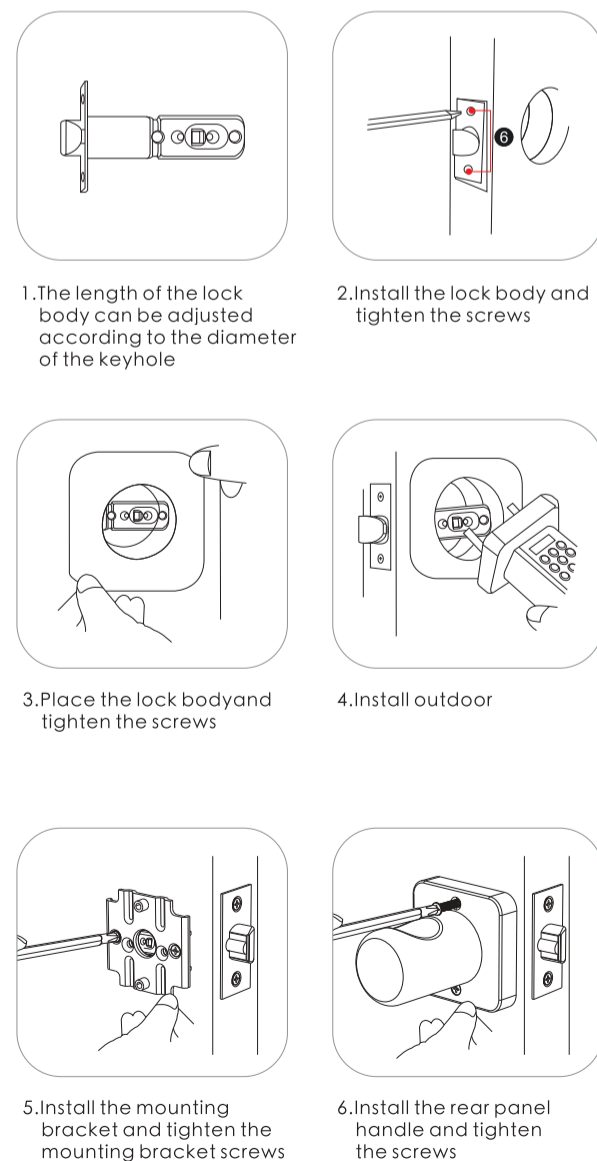


Uresetting diagram

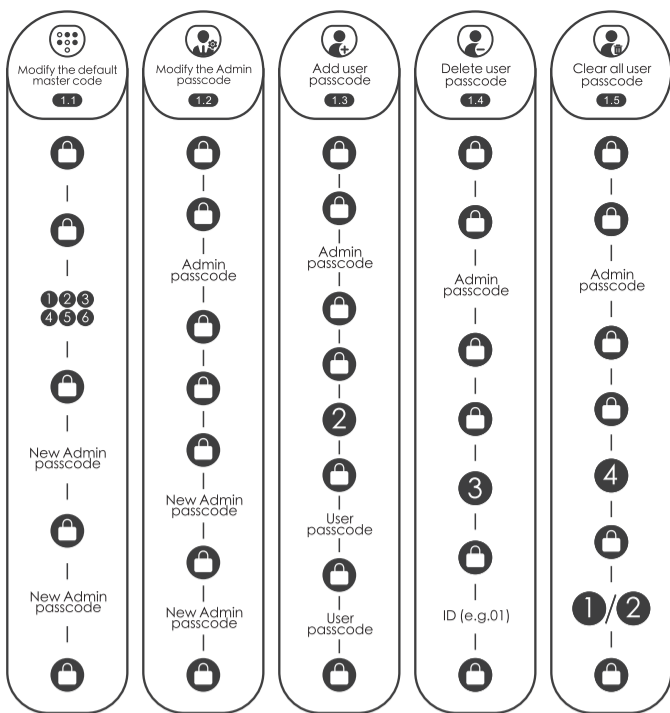


Installation diagram

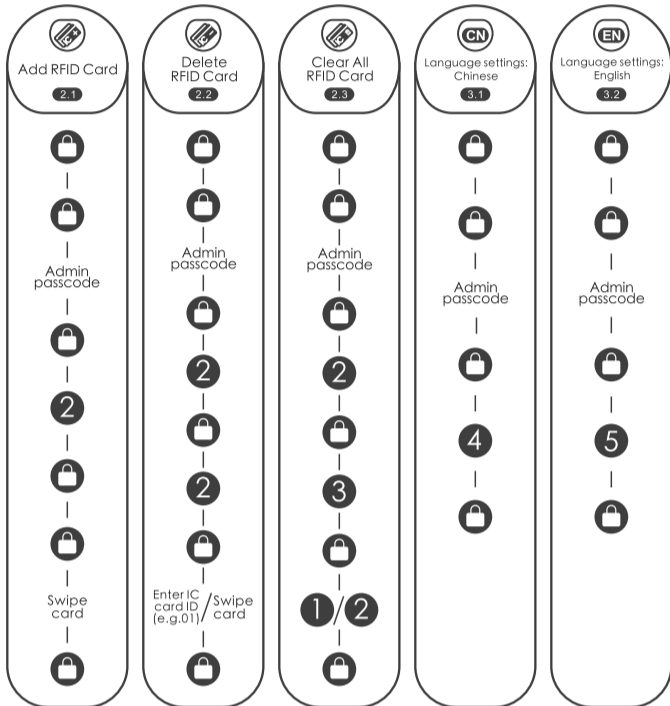
2.1 Picture of installation Inward opening door: The inclined surface of the bolt face outwards when installing



1.Passcode:Flow chart

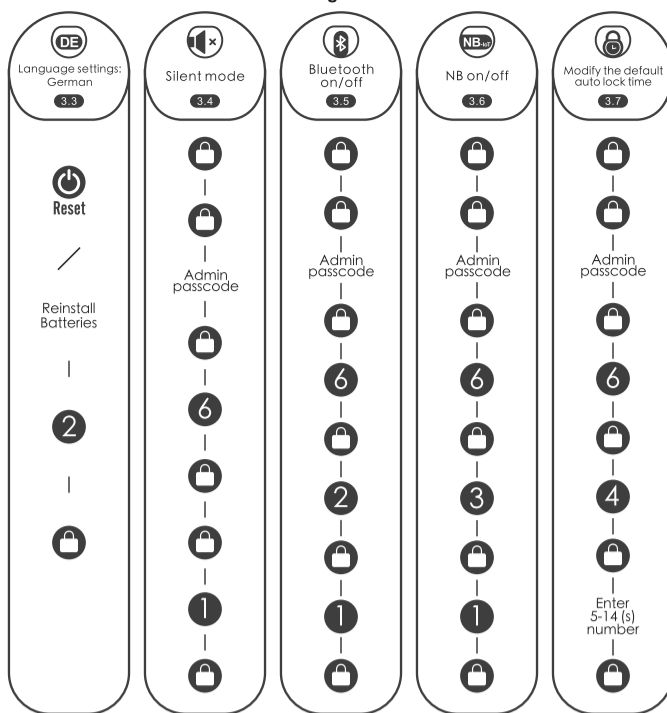


2.RFID card: Flow char

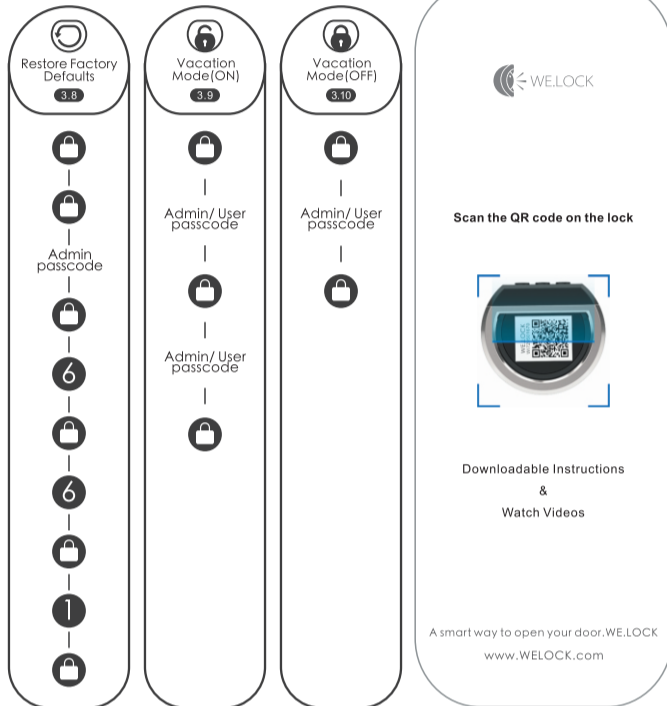


- 06 -

3.Other settings: Flow chart

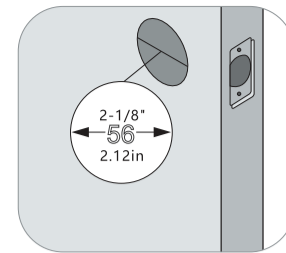


3.Other settings: Flow chart

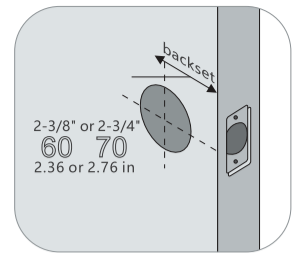


- 07 -

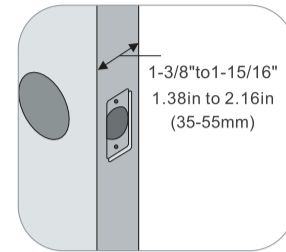
Applicable size



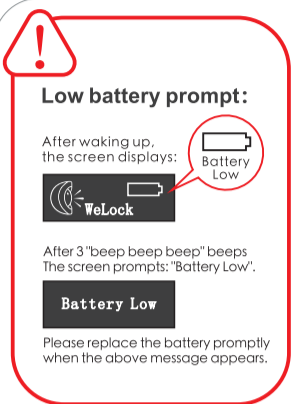
1.Measure to confirm that the hole in the door is 2-1/8"(2.12in)



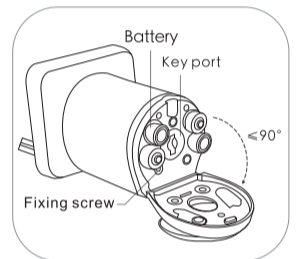
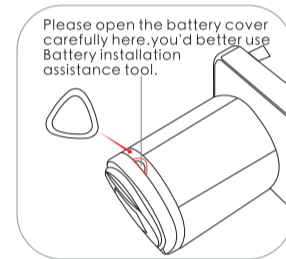
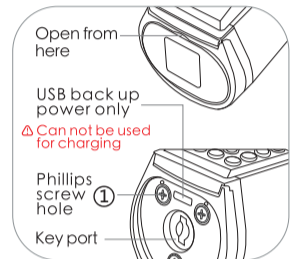
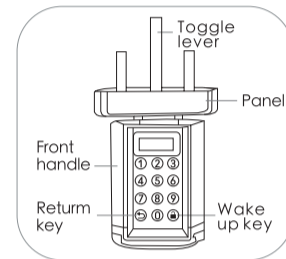
2.Measure to confirm that backset is either 2-3/8" or 2-3/4"(2.36or 2.76in)



3.Measure to confirm that the door is 1-3/8"to 2"(1.36in to 1.97in)



Product Introduction



- 08 -

Bluetooth activation and login instructions

Scan the QR code on the lock.

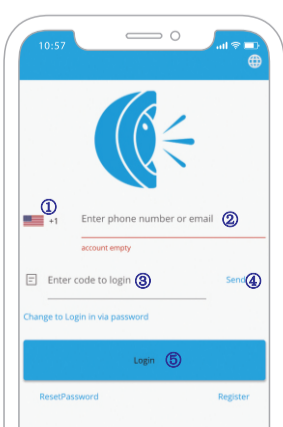


Select "Android/iOS" to download.



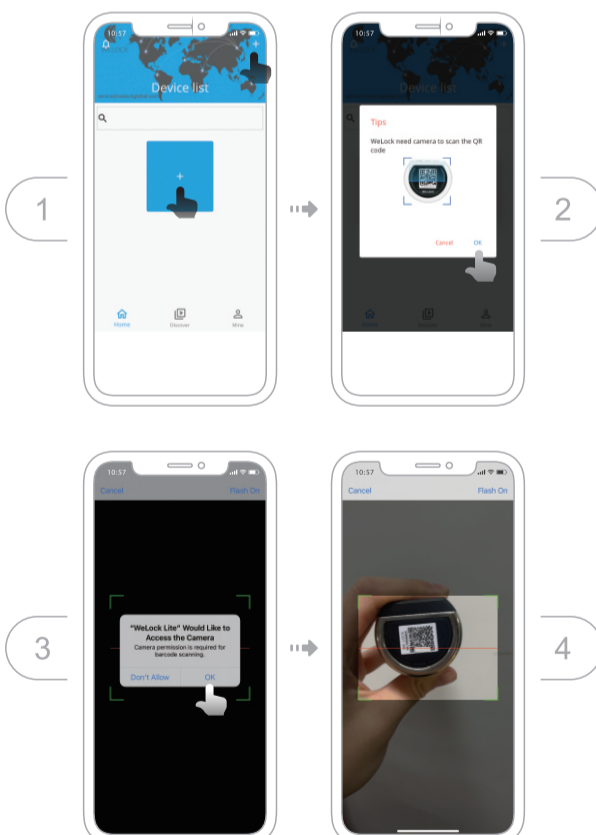
Log in to the app

- Select your country/region
- Enter the phone number/email to get the verification code
- Click"Send"
- Enter the verification code after receiving the message
- Click"Login"



- 09 -

Bind the device



- 10 -

Specifications

Brand	WE.LOCK
Applicable door types	Wooden doors, Interior doors
Adjustable range	1 3/8"to 1 15/16"(35-55 mm)
Operating Temperature	-25°C-60°C
Pressing Cycle Times	100,000 Times
Material of handle	Zinc Alloy
Way to unlock	Passcode / IC card / Bluetooth
Battery Type	4*AAA Battery
Power input	4V-6V
Battery Replacement	Replaceable
Color	Silver/ Black
Battery Life	>1 year

FAQ

- How often is the battery changed?**
When the low battery alarm occurs, the battery needs to be replaced in time.
- When will the low battery alarm?**
The battery is below 20%.
- How can enter scramble code?**
Enter any number before and after a correct passcode, 30 digits or less.
- How can unlock when the battery runs out?**
Users can use a mobile power supply to power the lock via a micro USB cable, and then use our App to unlock.
- How can contact customer service?**
Please contact this email: Service@WelockGlobal.com

- 11 -