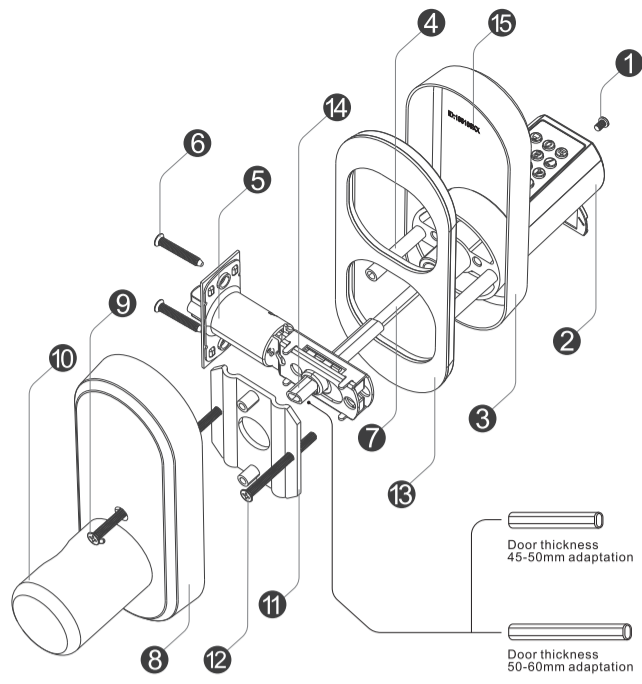
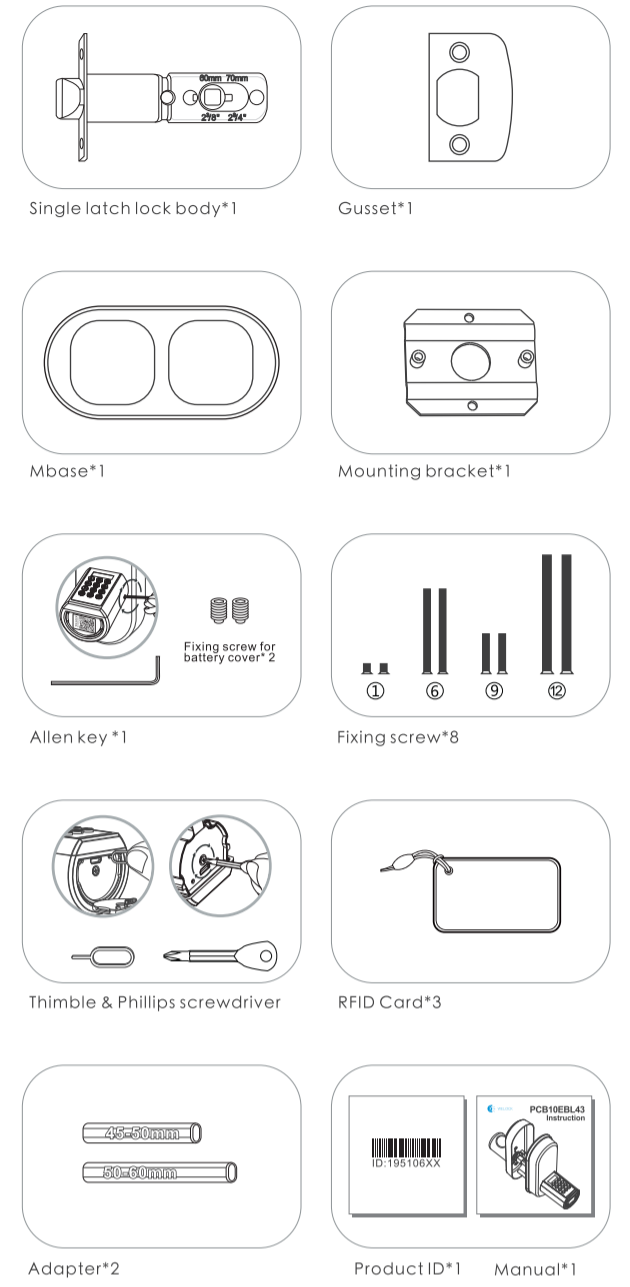


PCB10EBL43 Instruction

English



Accessory list(TOOL BOX)



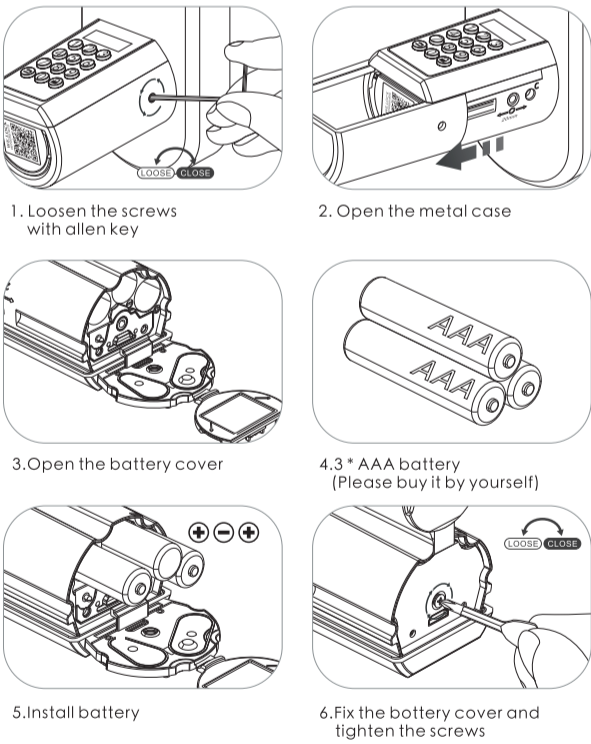
Catalogue

- Part list figure01
- Accessory list(TOOL BOX)02
- Install battery03
- Product Components
- Passcode:Flow chart.....04
- RFID card:Flow chart
- Other settings:Flow chart
- Installation diagram.....06
- Resetting diagram.....07
- Unlock and lock.....08
- FAQ
- Bluetooth activation and login instructions.....09
- Log in to the app
- Bind the device10
- Specifications11
- Operating instruction

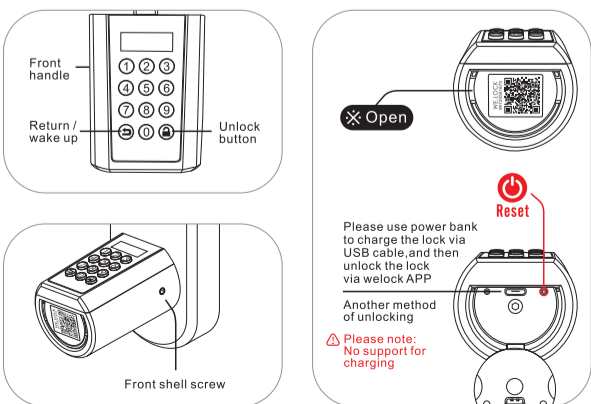
PART LIST FIGURE

- ① Screws for battery compartment
- ② Front Handle
- ③ Front Panel
- ④ Screw casing
- ⑤ Profile cylinder
- ⑥ Scerws for profile cylinder
- ⑦ Toggle lever
- ⑧ Rear Panel
- ⑨ Scerws for rear Panel
- ⑩ Rear handle
- ⑪ Mounting bracket
- ⑫ Mounting bracket screw
- ⑬ Mbase
- ⑭ Adapter
- ⑮ Product ID

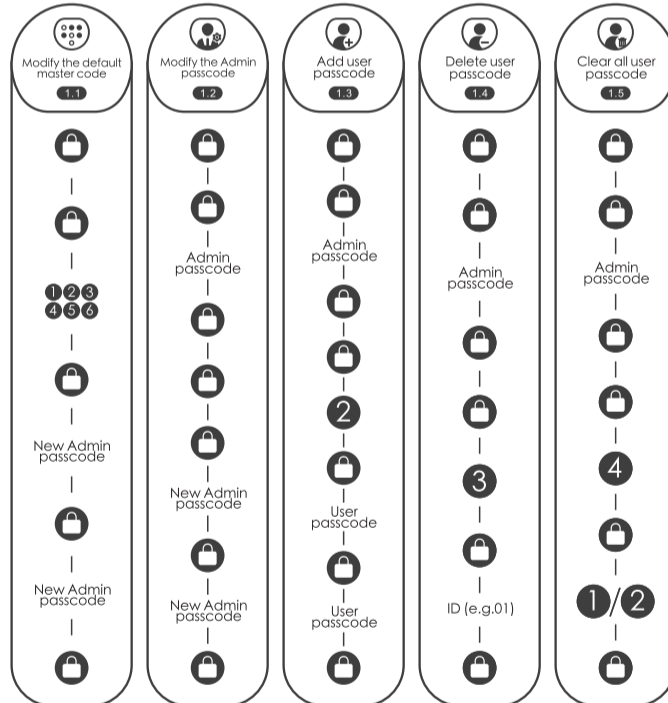
Install battery



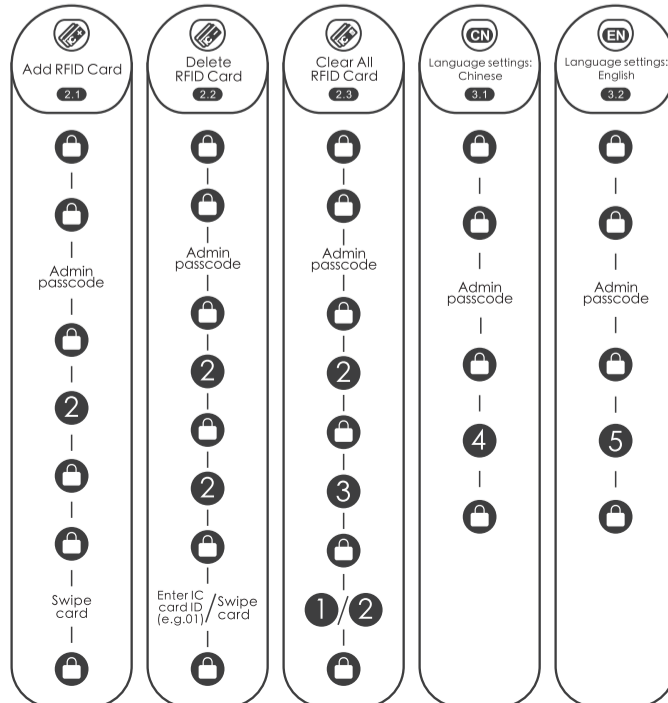
Product Components



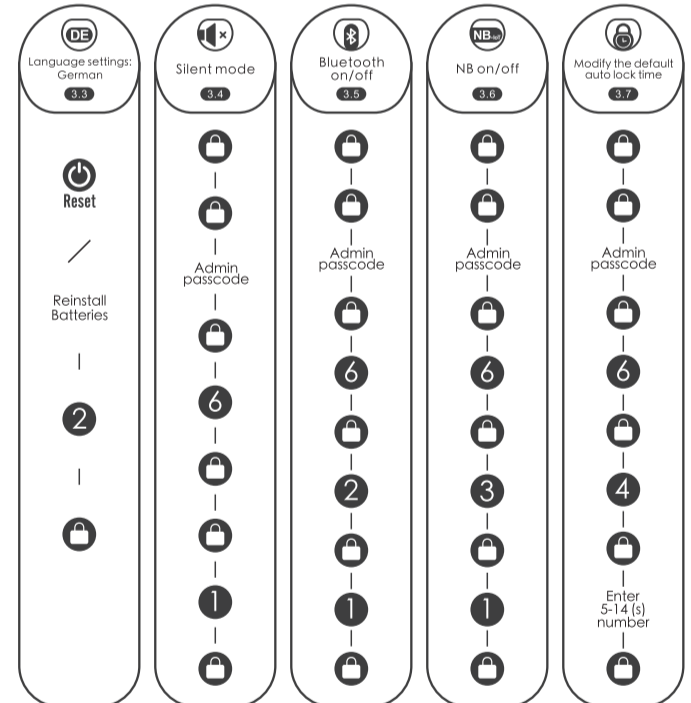
1.Passcode: Flow chart



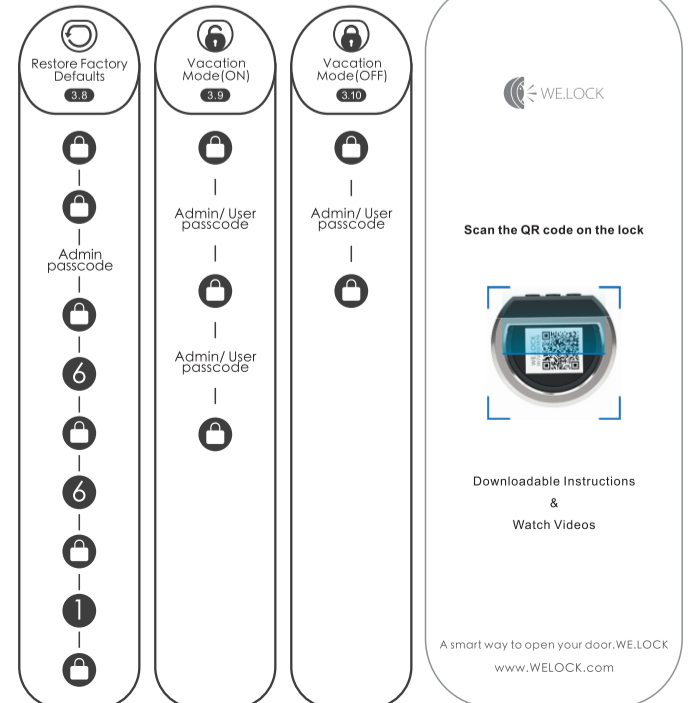
2.RFID card: Flow char



3.Other settings: Flow chart

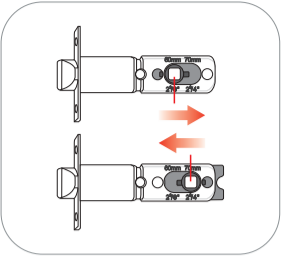


3.Other settings: Flow chart

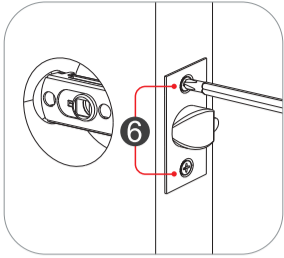


Installation diagram

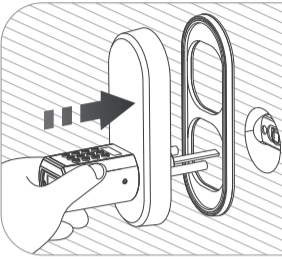
Picture of installation Inward opening door: The inclined surface of the bolt face outwards when installing



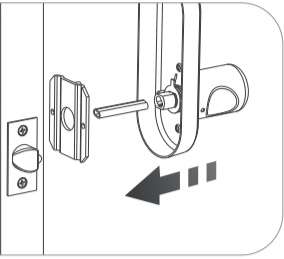
1. The length of the lock body can be adjusted according to the diameter of the keyhole



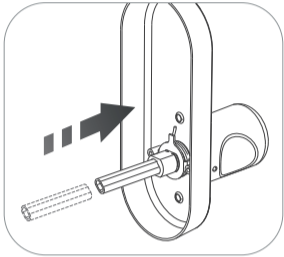
2. Install the lock body and tighten the screws



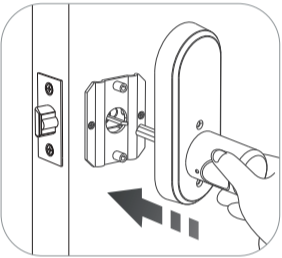
3. Insert the front handle toggle lever into the lock body



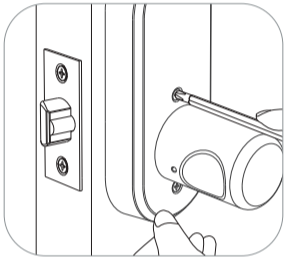
4. Install the mounting bracket and tighten the mounting bracket screws



5. Insert the fittings into the rear handle hole



6. Insert the rear handle with the fittings into the toggle lever

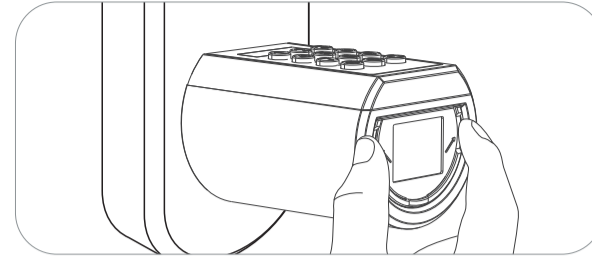


7. Install the rear panel handle and tighten the screws

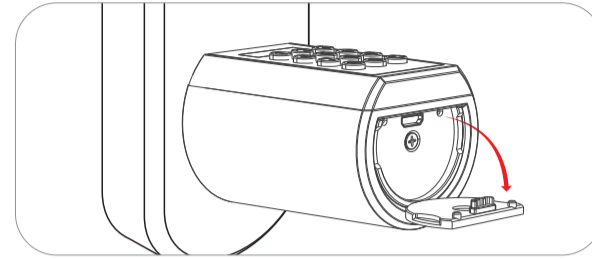
- 06 -

Resetting diagram

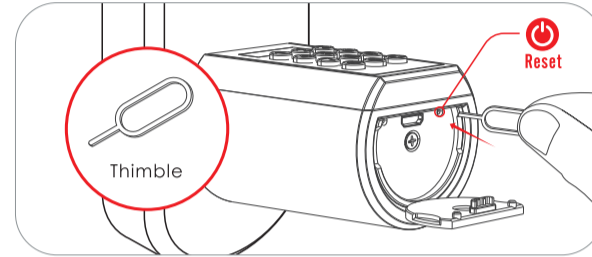
The reset function can be used when there is an unknown fault in the electronic lock or when the language needs to be switched



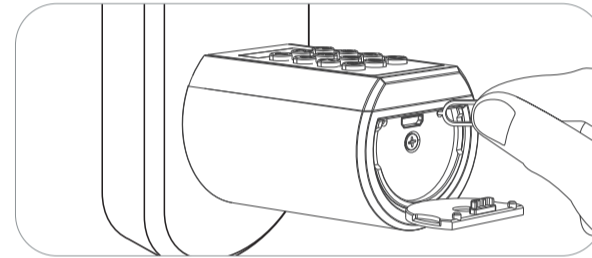
1. Opening the silicone cover



2. Find the Thimble in the attached accessories



3. Find the hole where the reset button is located

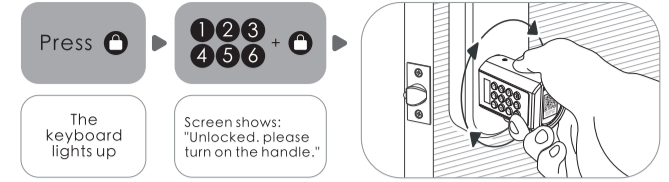


4. Insert the thimble into the hole and press the reset button

- 07 -

Unlock and lock

Unlock the door from outside

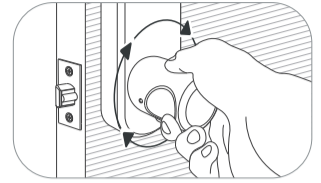


The keyboard lights up

Screen shows: "Unlocked, please turn on the handle."

The knob can be rotated 360 degree freely after locked.

To protect the lock not be damaged by torsion forcefully.



Low battery prompt:

After waking up, the screen displays:

After 3 "beep beep beep" beeps
The screen prompts: "Battery Low".

Battery Low

Battery Low

Please replace the battery promptly when the above message appears.

FAQ

- What should I do when I receive the lock?**
 When you received the lock, please modify the default password "123456" to your own admin password first, so please keep it in your mind.
- Where can I find the lock ID?**
 Please find the lock ID with 8 digits number on the inside the panel of lock, or find it on packing box.
- When will the low battery alarm?**
 The battery is below 20%.
- What is the USB backup key for?**
 USB backup key is spare key, for emergency situations, like when the lock is battery run out, then you can use power bank to power supply the lock via USB cable, then use our app to unlock the lock.
- How can contact customer service?**
 Please contact this email:
 Service@WelockGlobal.com

- 08 -

Bluetooth activation and login instructions

Scan the QR code on the lock

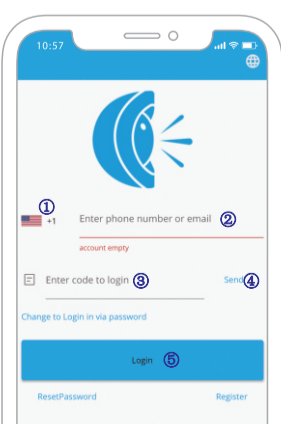


Select "Android/iOS" to download



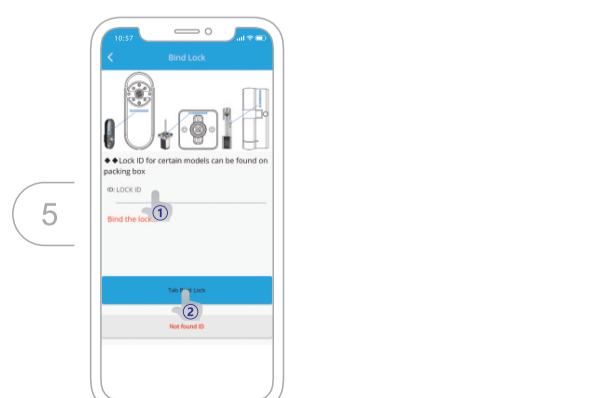
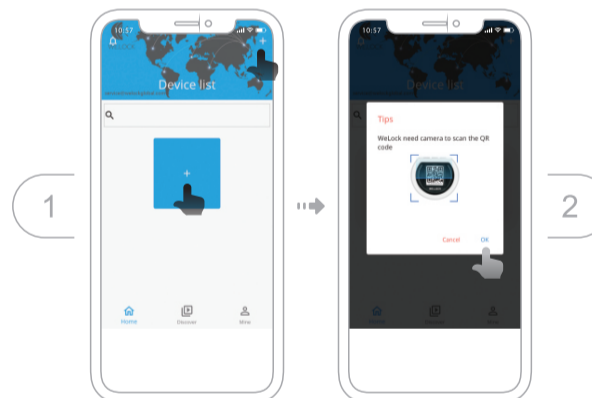
Log in to the app

- Select your country/region
- Enter the phone number/email to get the verification code
- Click "Send"
- Enter the verification code after receiving the message
- Click "Login"



- 09 -

Bind the device



- 10 -

Specifications

Brand	WE.LOCK
Applicable door types	Wooden doors, Interior doors
Adjustable range	1 49/64"to 2 23/64"(45-60mm)
Operating Temperature	-25°C - 60°C
Pressing Cycle Times	100,000 Times
Material of handle	Zinc Alloy/ 304 stainless steel
Way to unlock	Passcode / IC card / Bluetooth
Battery Type	3*AAA Battery
Power input	4V-6V
Battery Replacement	Replaceable
Color	Silver/ Black
Battery Life	>1 year

Operating instruction

- Enter the wrong passcode 5 times continuously. the system is locked for three minutes and cannot operate.
- Press **⏻** to wake up the keyboard+10 digits temporary passcode Enter the wrong passcode 5 times continuously, the system is locked for three minutes and the cannot operate. Temporary passcode generation needs to be done in the App. The time on the screen should be the same as the time on the phone, otherwise the temporary passcode will be invalid.
- Press **⏻** to wake up the keyboard+ swipe the IC cards Swipe the unmatched card 5 times continuously, the system is locked for three minutes and the cannot operate. Any IC card can unlock the door in factory state.
- Bind the lock on APP
Bind the lock on APP via Bluetooth, click "unlock", and the phone time will be synchronized to the lock via Bluetooth.

- 11 -