

Installation Instructions Yamaha Wolverine R-Max 4 P/N 9888

Step One: These instructions serve both the aluminum, and the UHMW versions of our skid plates. First off, it's best to familiarize yourself with the hardware and it's locations by referring to the hardware placement guide. To begin the installation of your main center plate, first you need to take the clip nuts and get them set into the correct spots on the frame. You will see a rectangle opening with a hole next to it in the metal bottom plate on the machine. It may be helpful to hold the hold that plate up in place to see the locations you will be using. Take the clip nut like it's a paper clip and through the square hole, slide it in until the threaded part of the nut is centered over the round hole. All of the mount points on this plate use the clip mount except the forward most 4 holes which thread directly into the frame with the 6mm X 16 flanged bolt and cupped washer with the smaller hole.

Step Two: now that you have all of your clip nuts inserted into the machine, you can now bolt on the main center plate (988M) to the machine using the supplied bolts and cup washers. Leave all of the bolts loose for now.

Step Three: Mount the rear plate (970R) the same way as the main plate using the 4) clip nuts.

Step Four: Now you are ready to install the floorboard skids (988FB) First you need to mount all (8 per side) of the clip nuts like you did for the previous plate. You will mount them to the frame everywhere there is the rectangle cut out next to the hole. Now you need to remove the two bolts up front that secure the fender well plastic to the frame. You will be picking up these points to mount the front of the floorboard skid. Once you have mounted all of the clip nuts to the machine you are ready to mount the floorboard skid. Again leave all the mounts loose until they are all in.

Step Five: Now you are ready to square up all the plates for the best fit, and to fully tighten all of the bolts.

Note: On the bolts that are threaded into the clip nuts we recommend not using any Loctite or thread locking compound as it may cause problems in removal of the plates. It is advisable that after the first few rides to put a wrench on all of those mount points and retighten as some settling in might occur.

Step Six: Now install the front bash plate (988T). The stock plastic plate remains in place as our plate mounts over that plate. Start by attaching the rear of the plate with the 2) 6mm X 30 hex bolts and washers. Now swing the plate up and center it. Now you will need to take an 11/33" drill and go right in the middle of the 2) mounting slots and drill through the plastic. Take the 2) supplied 'A' clamps and reach over the top and put them over the frame tubes. You may need to elongate the holes in the plastic a little so you can get the bolts into the clamps. A little low strength thread locking compound is the good thing on all of the mounting hardware (except the clip nuts).

Step Seven: Mounting the front A-arm guards, this is fairly straight forward. First you need to remove the factory plastic boot guard. Once you have the guard off, you can take the A-arm skid and set it into position. Put the 6mm X 20 bolt with washer in the outboard threaded mount in the A-arm, leave this a little loose. Now install the 2) clamps, square the guard up and tighten everything. Now you need to verify to make sure you have clearance around the A-arm guard. Turn the steering wheel in one direction to full lock and verify that the A-arm guard isn't contacting anything. Now turn the steering wheel to the opposite lock, and verify the skid isn't contacting anything in that direction.

Step Eight: Now you are ready to mount the rear A-arm guards, again this pretty straight forward. Start with the 2) inboard mounts using the 6mm X 30 bolts and washers into the threaded locations on the A-arm, again leave these loose. Now install the outboard mount using the 8mm X 30 bolt and the 700-37 nut plate, the nut plate sits on top of the gusset plate. The nut plate has a thread locking feature, when the bolt hits that part of the thread the resistance will go up significantly. It's recommended to put a drop or 2 of oil in that nut beforehand. Also you may need to hold onto that nut plate with an 11 mm or 7/16" wrench to keep it from spinning while tightening.

9888 Packing List

988 AF

- 4) 1 3/8 Clamp
- 4) M8x20 Button Head
- 2) M6x20 Button Head
- 2) 6mm HD Washer

988 T

- 2) M6x30 Button Head
- 2) 6mm HD Washer
- 2) M8x30 Button Head
- 2) "A" Clamp

988 AR

- 4) M6x30 Button Head
- 4) 6mm HD Washer
- 2) M8x30 Button Head
- 2) 700-37 Nut Plate

988 M

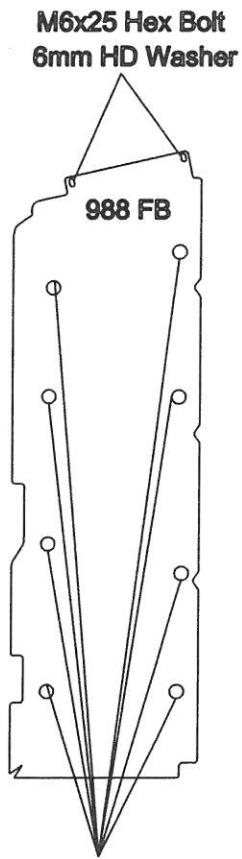
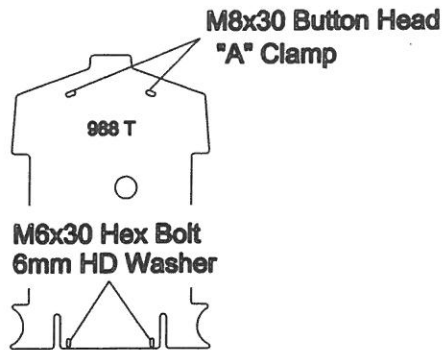
- 4) M6x16 Flange Bolt
- 4) 833 Cup Washer
- 15) M8x20 Button Head
- 15) 833-8 Cup Washer
- 15) 8mm Clip Nut

988 FB

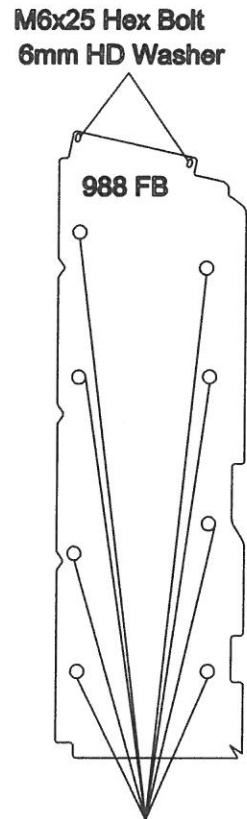
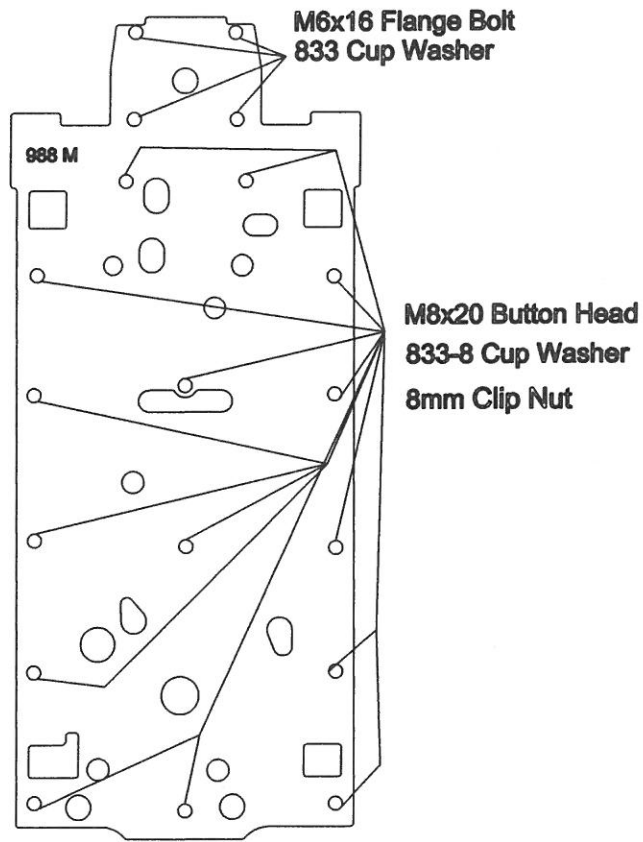
- 4) M6x25 Hex Bolt
- 4) 6mm HD Washer
- 16) M8x20 Button Head
- 16) 833-8 Cup Washer
- 16) 8mm Clip Nut

970 R

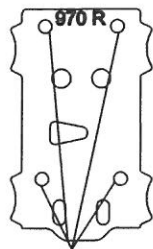
- 4) M8x20 Button Head
- 4) 833 -8 Cup Washer
- 4) 8mm Clip Nut



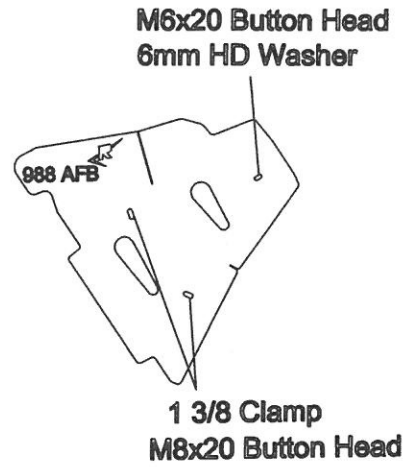
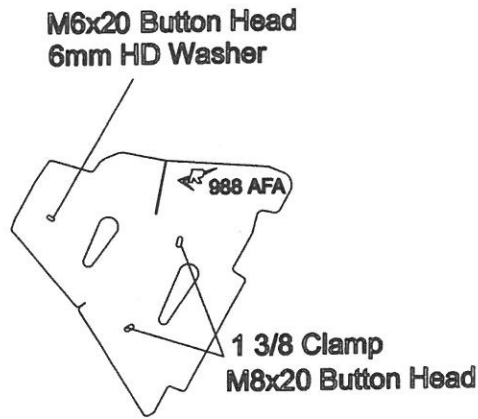
M8x20 Button Head
833-8 Cup Washer
8mm Clip Nut



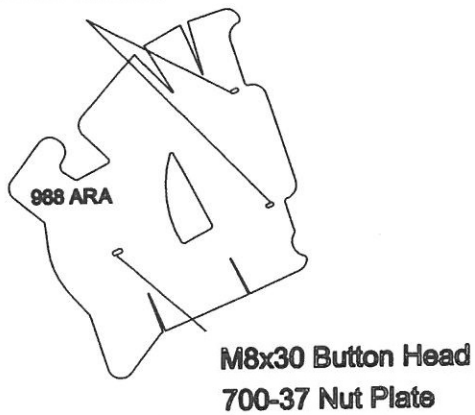
M8x20 Button Head
833-8 Cup Washer
8mm Clip Nut



M8x20 Button Head
833-8 Cup Washer
8mm Clip Nut



M6x30 Button Head
6mm HD Washer



M8x30 Button Head
700-37 Nut Plate

