

# Ricochet UTV & ATV Armor Kit Installation Tips

Thank for your purchase of this Ricochet Off-Road Armor Kit. All of our kits are custom designed to fit each model and should install hassle free with no additional modifications required. Please carefully read through all included instruction sheets before beginning your install.

The tips described on this sheet are general mounting tips that may or may not apply to your particular model, refer to the attached model specific instructions for a step by step mounting procedure.

If you do encounter a problem during installation please check the FAQ on our website or feel free to contact us by phone or email using the contact info at the bottom of this page.

## **Required Tools:**

(refer to your hardware placement guide for bolt sizes)

## **Button Head TORX Bolts:** (socket bit is highly recommended)

8mm bolts use a T-40 TORX bit

6mm bolts use a T-30 Torx bit

## **Hex Bolts & Nuts:**

10mm bolts uses 17mm

8mm bolts uses 13mm

6mm bolts uses 10mm

1/4"-20 bolts uses 7/16"

## **Drill Bits:**

While we try to avoid drilling whenever possible some models require one or two mounting points to be match drilled. When instructions call for a drilled mounting point use an **11/32"** bit to match drill through the mounting point on the skid plate only after the plate has been fully secured to your machine using the other hardware listed on your hardware guide.

## **Locking Nuts:**

Most sets will include two types of locking nuts. Loose nuts are Nylock, and any nuts welded onto other hardware are pinch-style Stover lock nuts. It is highly recommended that you use a bit of Anti-seize or a drop of oil on the threads of the welded-on pinch style nuts, this will make the bolts go on and come off much easier.

## **Other helpful tips:**

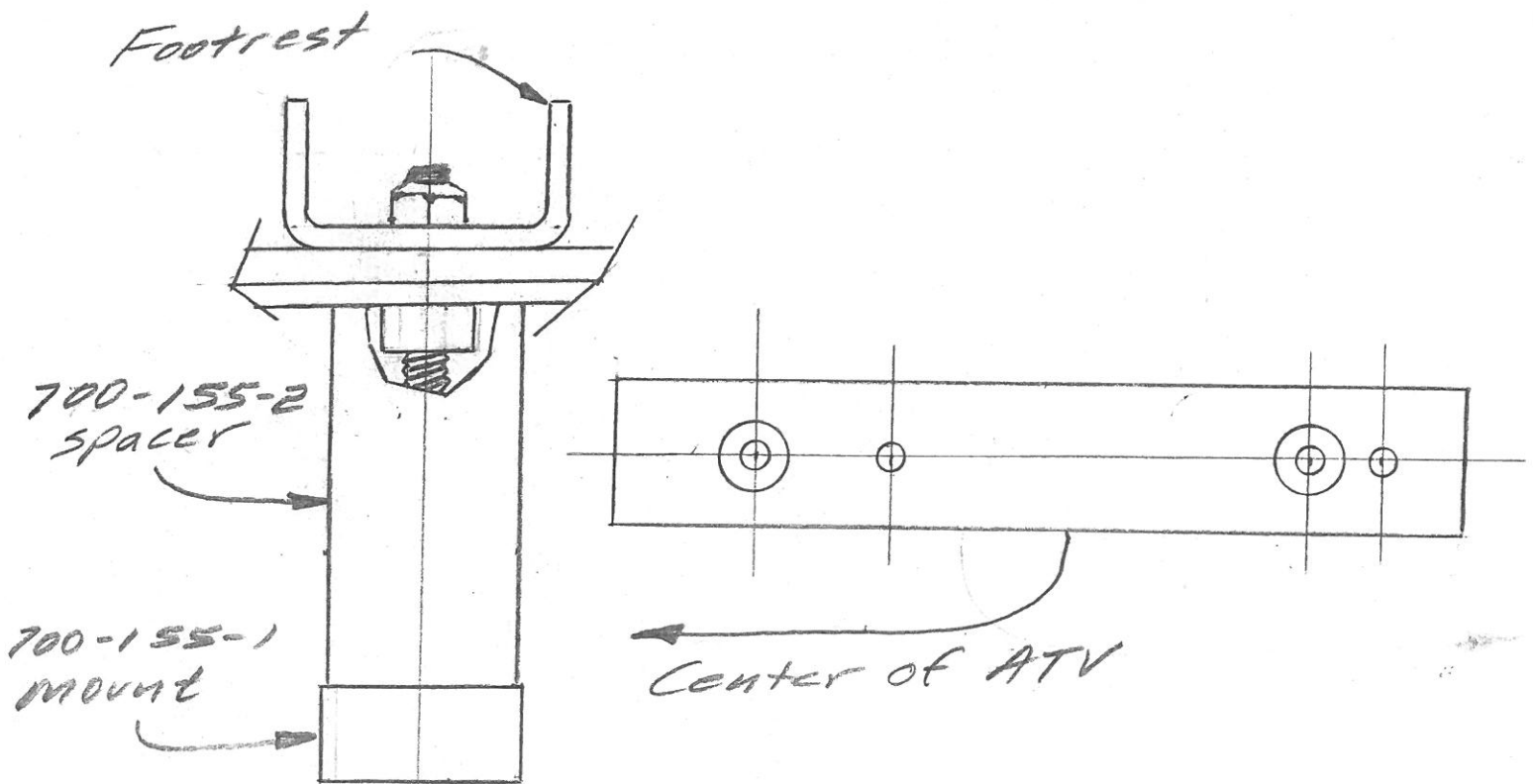
- Before you begin the installation organize all the included hardware according to the hardware placement sheet so you can quickly find the correct bolts and brackets when you need them.
- Install all bolts finger-tight at first until all hardware has been installed, this will give you maximum adjustability.
- When using the cupped washers to secure the plates to factory mounting points do not over torque the bolts because the threads can strip easily. If you do strip one out the simplest way to repair the thread is to use a 1/4"-20 x 5/8" self tapping bolt.
- You may find it easier to remove the rear tires when installing the rear a-arm guards, it's typically very tight and hard to see when the tires are left on.

**Contact us at 1-866-273-1197 or [dh\\_gibbs@comcast.net](mailto:dh_gibbs@comcast.net) with any questions or concerns.**

# Mounting Instructions

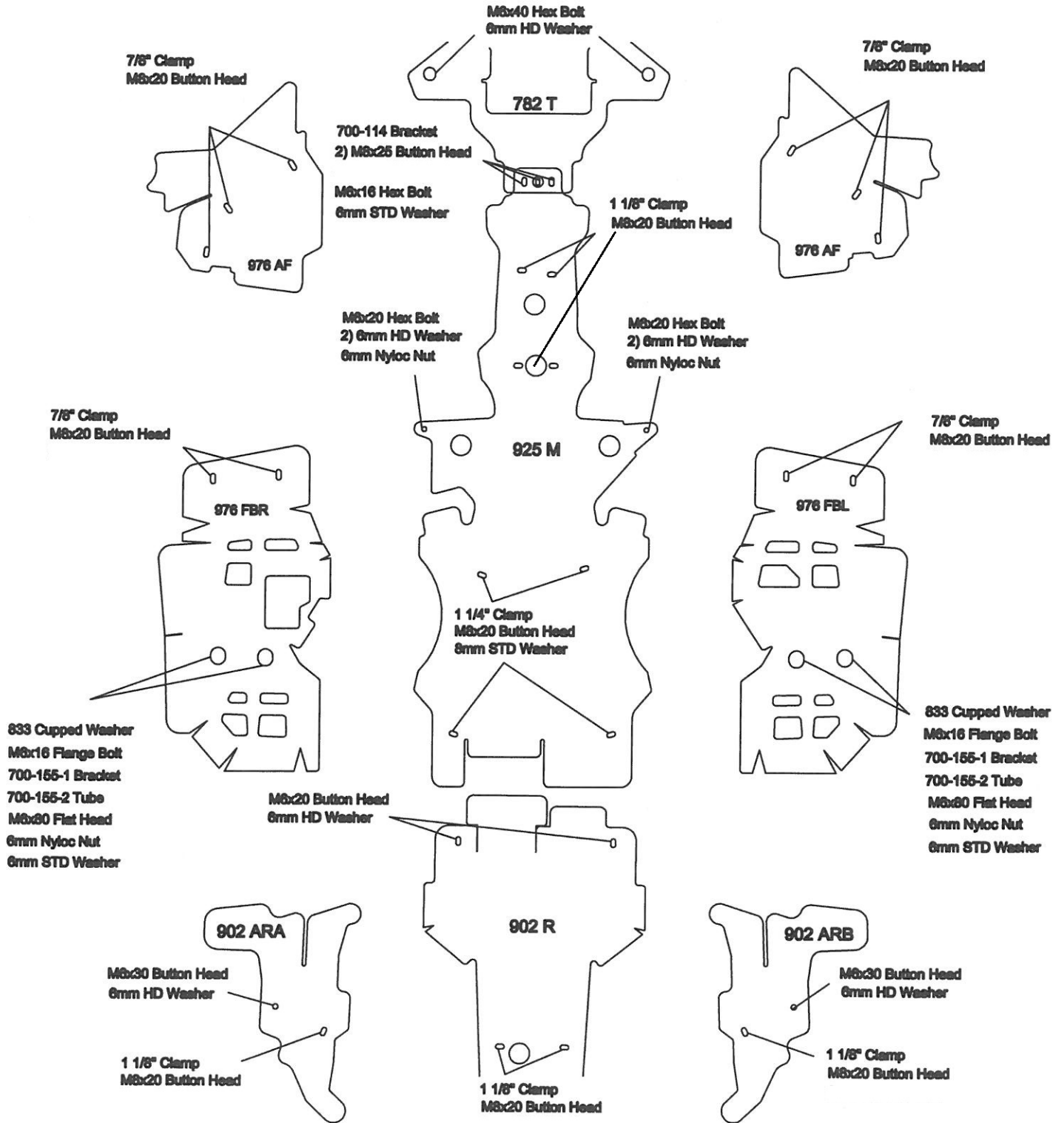
## P/n 976FB Floorboard Plates

1. Remove the 2 bolts holding down the serrated footrest.
2. Referring to the diagrams below install and orient the mount as shown. Be sure the spacer tubes slips over the welded on nuts.
3. Replace the footrest using the 6mm washers and nylock nuts. You may need to put an allen wrench on the M6 X 80 flathead bolts because when the locking part of the nut hits the top of the bolt it may want to back off.
4. Install the skidplate first using the M6 X 16 flanged bolts and the cupped washers. Leave these several turns loose for now.
5. Install the 7/8" clamps over the front of the plate and around the frame tube. Now push the plate up and against the frame and completely tighten these. Due to the all metal locknut welded to those clamps a little lubrication is a good thing, grease or anti-seize compound is best.
6. Now fully tighten the M6 bolts.



DAH 11/13/19

# 9776 Hardware Placement Guide



## 9776 Packing list

### 782 T

- 2) M6x40 Hex Bolt
- 2) 6mm HD Washer
- 1) 700-114 Bracket
- 2) M8x25 Button Head
- 1) M6x16 Hex Bolt
- 1) 6mm HD Washer

### 925 M

- 2) M6x20 Hex Bolt
- 4) 6mm HD Washer
- 2) 6mm Nyloc Nut
- 4) 1 1/4" Clamp
- 4) M8x20 Button Head
- 4) 1 1/8 Clamp

### 902 R

- 2) 1 1/8" Clamp
- 2) M8x20 Button Head
- 2) M6x20 Button Head
- 2) 6mm HD Washer

### 976 AF

- 6) 7/8" Clamp
- 6) M8x20 Button Head

### 976 FBR 976 FBL

- 4) 7/8" Clamp
- 4) M8x20 Button Head
- 4) 833 Cupped Washer
- 4) M6x16 Flange Bolt
- 2) 700-155-1 Bracket
- 4) 700-155-2 Tube
- 4) M6x80 Flat Head
- 4) 6mm Nyloc Nut
- 4) 6mm STD Washer

### 902 ARA 902 ARB

- 2) M6x30 Button Head
- 2) 6mm HD Washer
- 2) 1 1/8" Clamp
- 2) M8x20 Button Head