

# Installation Instructions for Polaris Turbo RZR XP S

## 9388F

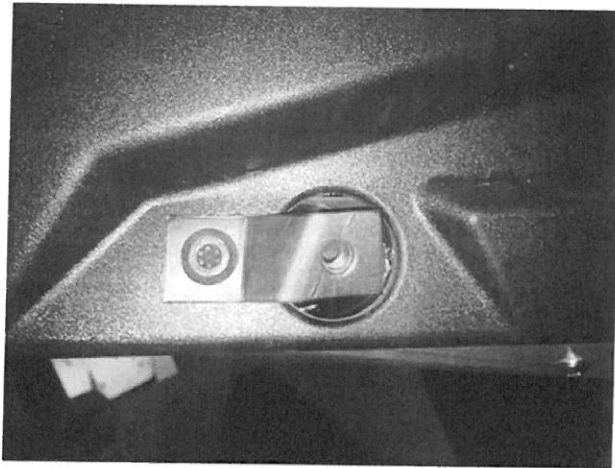
### Tools Needed:

A metric socket and flat wrench set, T-40 Torx socket drive bit, 9/32" and 11/32" drill bit, anti-seize compound.

Getting the machine up a little really makes the install easier. Those car ramps that are around a foot high work well for this.

1. First start by removing all of the stock plastic skidplates and guards.
2. The install order of the body plates is from front to back. Refer to the Clamp & Hardware Placement Guide and Hardware Packing List for the hardware needed and placement of each plate. Start with the front most plate (938T) by taking the 700-59 nut plate (the 2-1/2" X 3/4" bar with the nut welded on) and placing it on top of the plate covering the front diff. You can see where this needs to be by first holding the skidplate in place. Now hold that plate in place and install the 8mm X 40 buttonhead bolt into the bracket. Note that this bracket and many other of the hardware items have a nut welded to it. This is an all metal locknut and it is highly recommended that anti-seize compound be used on this nut and the bolt to ease installation and facilitate removal later. Tighten this bolt enough to hold the plate in place but loose enough that the plate will move freely. The front 2 mounts on this plate will require drilling through the frame gusset. A helping hand may make this step a little easier. Center and hold the plate up tight against the frame then drop the supplied cupped washer into each hole and mark the location. Using the 9/32" drill through that gusset plate. Now attach the plate using the cupped washers and 6mm X 20 bolts and 6mm nylock nuts. For this plate and all of the rest leave all of the mounting hardware a little loose until all of the plates are installed.
3. Now install the next plate back (938M1). First hold the plate in place and you will notice a factory mounting point almost in the middle of the plate. Use a cupped washer and a 6mm X 16 flanged head bolt (the gold ones) there to hold the plate in place. Now install the frame clamps using the hardware placement guide for which size clamp goes where. The clamps are marked with a size or a letter designation. The clamp locations where there is an adjacent large hole on the skid plate, you will need to feed the clamp through that hole and over the frame tube. Don't forget the anti-seize compound on these.
4. Move on to the next plate back (938M2). This plate has 3 locations that use the cupped washers with the 6mm X 16 flanged bolts in factory mounting locations, install these first. Then install the 700-37 nut plate (the 1.7" X 1.7" plate with the nut welded on) with the 8mm X 45 buttonhead bolts in the location shown on the hardware placement guide. Lastly per the guide install the 2 8mm X 45 buttonhead bolts with the large 8mm flat washer under the 8mm nylock nut.
5. Now the rearmost plate (937R) which has 4 factory mounting locations. Note on the 4 frame clamps the different bolt lengths.

6. Now that all of the plates are in place they can be centered and butted up against each other and all of the hardware tightened down. Note that on all of the hardware pieces that have the locknut welded on when the bolt hits the locking portion of the nut you will encounter a noticeable increase in resistance. Make sure the clamp is seated firmly against the plate and the bolt is coming all the way through the nut.
7. Now move on to the Rock Slider/Floorboard Plates (775FB R/L). First install the 700-75 brackets as shown in the pic below using the factory bolts. Note there is a right and left bracket. Leave these bolts tight enough that the bracket will stay in place but loose enough so you can still move it. Now take the corresponding plate and hold it in position up against the machine. Push it up and against the side of the machine as hard as you can. Now reach through the mounting holes on the side of the plate with a Phillips screwdriver and rotate the brackets into alignment with the holes in the plate. Now go ahead and tighten the mounting bolts on those brackets. Now install the guards to those brackets using the 8mm X 25 buttonhead bolts and leave fairly loose. Now rotate the plate up against the bottom of the machine and feed the 700-76 nut plates through the slots in the plate and corresponding slots in the frame and attach it with the 8mm X 25 Buttonhead bolts. Now push the plate up hard against the bottom and side of the machine and tighten the mount bolts on the side then tighten the mounts on the bottom. Lastly, on the bottom of the plate in the front and the rear there is a hole. Take an 11/32" drill and match drill through the plastic in those locations and attach with the 8mm X 25 buttonhead bolts and nylock nuts.



**Fig. 2**

8. Now install the front A-arm guards (938AF R/L) using the 1-3/8" clamps. Position the guard so it fits the contour of the A-arm. Leave the clamps loose and now turn the steering all the way over and position the guard so it's not hitting the brake caliper, give it a least 1/4" clearance and now tighten all of the clamp bolts. Repeat for other side.
9. Now install the rear trailing arm guards (938AR R/L). Note that the welding can cause these to collapse in a tad so a rubber mallet is the best way to gently tap them up into position once you align them to the curvature of the arm. Now attach the guards with the 700-143 and 700-144 spacer blocks on the top of the guard using the 8mm X 65 hex bolts and nylock nuts. You will notice the spacer blocks are notched accordingly to clear the brake line that runs along the top of the arm.

## Hardware Packing List For P/N 9388F

### 938 T

- 1) # 700-59 Nut Plate
- 1) M8x40 Button Head
- 1) 8mm Flat Washer
- 2) #833 Cupped Washers
- 2) M6x20 Hex Heads
- 2) 6mm Nyloc Nuts

### 938 M1

- 4) 1 1/4 Clamps
- 4) M8x20 Button Heads
- 8) 8mm Flat Washers
- 1) #833 Cupped Washer
- 1) M6x16 Flange Bolt
- 4) "A" Clamps
- 4) 8x20 Button Heads

### 938 M2

- 3) #833 Cupped Washers
- 3) M6x16 Flange Bolts
- 2) "A" Clamps
- 2) M8x20 Button Heads
- 6) 8mm Flat Washers
- 4) M8x45 Button Heads
- 2) 8mm Nyloc Nuts
- 2) 8mm HD Washers
- 2) 700-37 Nut Plate

### 937 R

- 4) #833 Cupped Washers
- 4) M6x16 Flange Bolts
- 4) 'B' Clamps
- 2) M8x25 Button Heads
- 2) 8x30 Button Heads
- 4) 8mm Flat Washers

### 775 FB

- 12) M8x25 Button Head
- 4) 8mm Nyloc Nuts
- 16) 8mm Flat Washers
- 4) #700-76 Nut Plates
- 4) #700-75L Bracket

### 938 AF

- 6) 13/8 Clamps
- 6) M8x20 Button Heads
- 6) 8mm Flat Washers

### 938 AR

- 2) #700-143 Spacer
- 4) M8x65 Hex Head
- 4) 8mm Nyloc Nuts
- 8) 8mm Flat Washers
- 2) #700-144 Spacer

## Clamp & Hardware Placement Guide For P/N 9388F

