

# Ricochet UTV & ATV Armor Kit Installation Tips

Thank for your purchase of this Ricochet Off-Road Armor Kit. All of our kits are custom designed to fit each model and should install hassle free with no additional modifications required. Please carefully read through all included instruction sheets before beginning your install.

The tips described on this sheet are general mounting tips that may or may not apply to your particular model, refer to the attached model specific instructions for a step by step mounting procedure.

If you do encounter a problem during installation please check the FAQ on our website or feel free to contact us by phone or email using the contact info at the bottom of this page.

## **Required Tools:**

(refer to your hardware placement guide for bolt sizes)

## **Button Head TORX Bolts:** (socket bit is highly recommended)

8mm bolts use a T-40 TORX bit

6mm bolts use a T-30 Torx bit

## **Hex Bolts & Nuts:**

10mm bolts uses 17mm

8mm bolts uses 13mm

6mm bolts uses 10mm

1/4"-20 bolts uses 7/16"

## **Drill Bits:**

While we try to avoid drilling whenever possible some models require one or two mounting points to be match drilled. When instructions call for a drilled mounting point use an **11/32"** bit to match drill through the mounting point on the skid plate only after the plate has been fully secured to your machine using the other hardware listed on your hardware guide.

## **Locking Nuts:**

Most sets will include two types of locking nuts. Loose nuts are Nylock, and any nuts welded onto other hardware are pinch-style Stover lock nuts. It is highly recommended that you use a bit of Anti-seize or a drop of oil on the threads of the welded-on pinch style nuts, this will make the bolts go on and come off much easier.

## **Other helpful tips:**

- Before you begin the installation organize all the included hardware according to the hardware placement sheet so you can quickly find the correct bolts and brackets when you need them.
- Install all bolts finger-tight at first until all hardware has been installed, this will give you maximum adjustability.
- When using the cupped washers to secure the plates to factory mounting points do not over torque the bolts because the threads can strip easily. If you do strip one out the simplest way to repair the thread is to use a 1/4"-20 x 5/8" self tapping bolt.
- You may find it easier to remove the rear tires when installing the rear a-arm guards, it's typically very tight and hard to see when the tires are left on.

**Contact us at 1-866-273-1197 or [dh\\_gibbs@comcast.net](mailto:dh_gibbs@comcast.net) with any questions or concerns.**

## Hardware list for 9277XM

### Bash Plate 749T & 749B

- 2) 8x45 Torx Bolts
- 2) 8x40 Torx Bolts
- 2) 8x20 Torx Bolts
- 2) 836 Clamps
- 4) M8 Nylock Nuts
- 4) M8 HD Washers
- 6) M8 Washers

### Center Skid 762M

- 2) 700-50 Bracket
- 2) 700-51 Bracket
- 4) 6x20 Flat Head Bolts
- 4) 8x25 Torx Bolts
- 4) 6x60 Hex Bolts
- 4) M8 Washers
- 4) M6 Nylock Nuts
- 8) M6 Washers

### Rear Skid 762R

- 4) 836 Clamps
- 1) 700-06 Nut Plate
  - 4) 8x20 Torx Bolts
- 1) 8x40 Torx Bolt
- 5) M8 Washers

### Front A Arm skids 749AF

- 8) 1" Clamps
- 8) 8x20 Torx Bolts
- 8) M8 Washers

### Rear A Arm Skids 927AR

- 2) 700-117 Brackets
- 4) 6x16 Flange Bolts
- 4) M6 Nylock Nuts
- 2) 700-118 Brackets
- 2) 10x25 SHCS
- 1) M10 Nylock Nut
- 4) 8x20 Torx Bolts
- 4) M8 Washers

## Mounting Instructions

- 1) For the easiest installation, it is best to stand your machine up on end. Be sure to secure it properly as it is unstable in this position.
- 2) Remove the main factory plastic belly skid, and the two front a arm plastic guards. The main belly skid can be difficult to remove because of the way it hangs up in the front bumper. Usually a good yank will free it. You also need to remove the two most outer bolts in each foot well.
- 3) Locate the hardware kit for your Ricochet belly skid. (749M) Begin by installing the two mounting brackets ( 700-50 & 700-51) on each of the horizontal cross members Take the steel plate ( 700-51) and hold it in place behind the cross member as shown in Fig.1 With this steel plate lined up with the four holes in the cross member take your aluminum plate (700-50) and secure it to the steel plate using your 6x20 flat head bolts, as shown in Fig.2
- 4) You can now install your main belly skid (749M) using the rest of the hardware shown on the placement guide. Be sure to use anti seize on all bolts. Thread your 6x60 bolts through the skid plate and outer most foot well mounts. The bolt head will be on the bottom side, and the nut on the top side.
- 5) Now you are ready to install your rear skid (749R) and the front frame skid (749B) using the hardware shown on the placement guide. Line the hardware up with the holes on the plate, get all of the hardware started but leave it loose for now. Use anti seize on all bolts. If you are installing the front bash plate as well (749T) leave the two front mounts for your front frame skid out for now. Square these two plates up to the main belly skid and tighten all bolts.
- 6) If you are installing the front bash plate you will need to drill through the plastic to access the two top

mounting points. First install the front bash plate overlapping the front frame skid, using the hardware shown in the placement guide. Make sure the bolts are centered in the mounting slot on the bash plate. Now you can match drill through the plastic bumper with a 3/8 drill bit as shown in Fig.3 Now with access to the top mounting points you can finish the installation using the hardware shown on the placement guide.



Fig. 1



Fig. 2

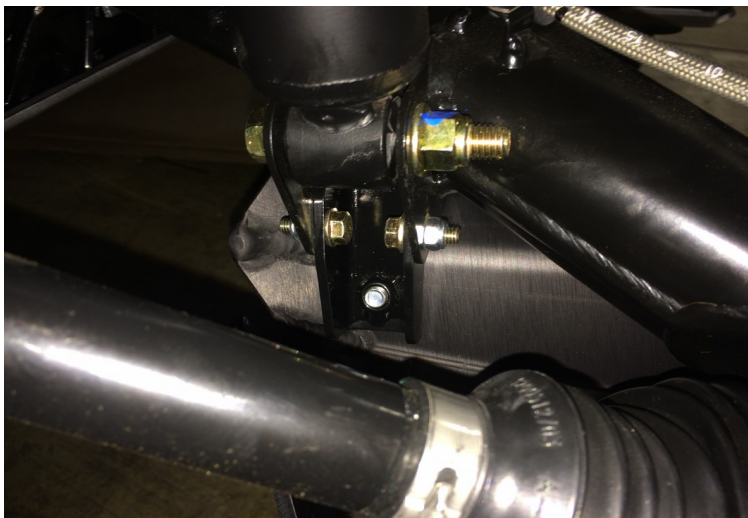


Fig. 3

7) Mounting the front a arm skids (749AF) is pretty straight forward. Using the hardware guide mount the front a arms loosely. Now turn the front wheels from lock to lock and check for clearance around the whole a arm. Once you have clearance you can tighten the bolts down. Check for clearance on both sides and use anti seize on all of the bolts.

8) To mount the rear a arm skids (927AR) bring the machine back down on the ground. Jack up the rear of the machine, and after safely securing it on jack stands remove both rear wheels. The stock plastic guards are only held on by one bolt, and a plastic ring around the hub. If you want to keep your factory plastic guards in tact, you need to remove the wheel hub, in order get the plastic ring free. If you don't care about keeping the plastic guards, you can simply cut the plastic ring.

9) Mount your 700-117 channel bracket to the mount under the shock mount using the hardware in the placement guide. Leave this loose for now. The weld on nut will face down and rearward. As shown in the picture:



10) Now you can mount you 700-118 L bracket. On the right side of the machine, remove the bottom bolt that mounts the brake caliper. Using the supplied bolt on the hardware guide, mount the 700-118 L bracket to the brake caliper mount. On the left side of the machine, there is no brake caliper, so you will mount the 700-118 L bracket using the bolt and nut supplied.

Now that both brackets are loosely mounted, you can mount the rear a arm skid using the hardware on the hardware guide. After both bolts are started, you can tighten them and then tighten the mounting brackets. Be sure to use anti seize on all bolts.

# Hardware Guide for 9277XM

