

Installation Instructions

P/n 857-U

½" UHMW Skidplates

Polaris RZR Pro R

Notes; Before Starting Install

Tools Needed For The Install; 6mm and 8mm socket wrenches. 6mm and 8mm open end wrenches. T-40 Torx socket drive wrench. On this tool it is best to use a high quality hardened tool. The cheaper tools tend to be a little on the soft side and start rounding off after limited use and can make it easier to strip out the star Torx drive on the bolt head.

There are a handful of locations on the machine frame that we pick up for mounting the plates that have the dimpled hole but they are not tapped from the factory, you will need a 6mm X 1.0 tap.

We also recommend a medium thread locking compound such as Loctite Blue.

The hardened T-40 Torx bit, 6mm tap and handle and thread locking compound are available on the tools section on our website.

The install is made much easier if you lift the front of the machine a little. Those foot high car ramps work quite well for this.

The mounting hardware is packaged individually for each plate and are marked accordingly. Refer to the hardware placement guide for each individual plate part #. There is also a hardware identifier for your reference. We also like to lay out the plates on the floor in their proper sequence per the hardware placement guide.

It seems on most of the installs we do on these Polaris's we encounter 1 or more of the 6mm frame mounting points are stripped out. Supplied with the kit is a handful of ¼"-20 Self Tapping Hex Bolts. Use one of these to repair any of those stripped locations.

Installation:

1. Start the installation by removing all the factory skidplates.

2. The way the plates overlap start with the rearmost plate (855R-U) and move forward. To help holding this plate up while installing the mounting hardware use a couple of the M6 X 20 flanged hex bolts in the outboard front two mounting points. Note, these bolts are in the hardware packet for the next plate (857M3-U). Now install the rearmost mount using the 700-06 nut plate M8 X 25 hex, 8mm H/D washer and 700-124 clamp stop spacer. Note that this arrangement is used on all of the mounting clamps. The reason for the clamp stop spacer is to be able to get a full torque on the bolt. Without it the UHMW plastic is so soft one could inadvertently drive the bolt and washer right through the plate. Refer to fig. 1 for the clamp, clamp stop spacer and washer configuration. The 700-06 nut plate sits on top of the frame just above the mounting hole in the plate. Leave this mount a little loose, in fact you want to leave all of the mounts a little loose on all the plates until they're all installed. Now referring to the hardware placement guide install the 3) clamps. The size clamp used in each location is stamped on the clamp (fig. 2). To install the center 'A' clamp feed the clamp through the hole in the plate just behind the slot. Note, the clamps always go over the frame tube that is perpendicular to the clamp mounting slot in the plate. Also note this clamp uses a longer bolt (M8 X 30) and clamp stop spacer (700-158).

3. Next install the 857M3-U plate using the M6 X 20 flanged hex and the one 'B' clamp and 833-8 cupped washer in the center rear location. Note the 833 cupped washers are for the 6mm bolts, the 833-8 cupped washer has a larger diameter hole for the 8mm bolts. Also note on the clamps that use the cupped washer the clamp stop spacer is not used.

4. Next install the two small aluminum backing plates, 857M5 left & right. Referring to the hardware placement guide start with M6 X 20 flanged hex, 833 cupped washer and 700-137 spacer. Refer to fig. 3 for the sequence of the bolt, cupped washer and spacer. Now install the 2) 'B' clamps using the M8 X 25 hex bolts with 833-8 cupped washers and 700-06 nut plate, 833-8 cupped washer and M8 X 25 Truss Head Torx. On the nut plates and clamps use the access holes to feed them up and into place.

5. Install the 857M1-U plate using the M6 X 20 flanged hex with 833 cupped washers first. The 2) front outboard mounts use the M6 X 30 flanged hex, 833 cupped washer and 700-68 spacer (fig 3). Now install the clamps. The front 2) '2' clamps use an M8 X 35 hex, 8mm H/D washer and 700-158 clamp stop spacer. The rear outboard 4) mounts use the 700-06 nut plate, M8 X 25 Hex and 833-8 cupped. Use the access holes to feed the 700-06 nut plates up and on top of the other plates.

7. Now adjust and align all the plates and tighten all the mounts. Start with all the 6mm bolts that thread directly into the frame. These mounts are very easy to strip out so be careful not to over torque them, just snug. If any of these mounts feel like they are stripped out replace them with the 1/4" - 20 self-tapping hex bolts supplied with the kit. Now tighten all of the rest of the mounts.

8. On the 6mm bolts, since you can't apply a lot of torque to those it's recommend to use a thread locking compound on those. After you have tightened all the mounts, remove those one at a time and apply the thread locker and reinstall. You can use the thread locking compound on all the clamps, but doing that can sometimes cause the clamp to spin off the frame tube when removing. If you choose to apply a thread locker to those be sure it is a low strength compound. If you don't use any thread locker on those, it's recommended that after a few rides to put a wrench on them and make sure they are all tight since some settling in might occur.

9. Lastly mount the front aluminum plate 855T. You will need to remove a couple of factory bolts up front, just hold the plate up in place and you'll see which ones they are. Behind the plastic in those two locations there are a couple of clip nuts that are very light duty, remove those and replace them with the ones supplied with our plate. Now mount the plate up front using the M6 X 25 std. hex and 6mm H/D washers. In the rear of that plate the 2) 700-37 nut plates sit on top of the frame directly above the mounting slots in the plate. Now tighten the mounts on that plate and you're done.

Hardware List

P/n 857-U

855T

- 2) M8 X 25 Truss Head Torx
- 2) M6 X 25 Std. Hex
- 2) 6mm H/D Washer
- 2) 6mm Clip Nut

857M1-U

- 2) '2' Clamp
- 2) M8 X 35 Truss Head Torx
- 4) M8 X 25 Hex
- 2) M6 X 30 Truss Head Torx
- 8) M6 X 20 Flanged Hex
- 2) 8mm H/D Washer
- 2) 700-158 Clamp Stop Spacer
- 2) 700-68 Spacer
- 10) 833 Cupped Washer
- 4) 833-8 Cupped Washer
- 4) 700-06 Nut Plate

857M5U L/R

- 2) 'B' Clamp
- 4) M8 X 25 Truss Head Torx
- 2) M6 X 20 Flanged Hex
- 8) M6 X 20 Flathead
- 2) 8mm H/D Washer
- 2) 700-124 Clamp Stop Spacer
- 2) 700-137 Spacer
- 2) 833 Cupped Washer
- 2) 833-8 Cupped Washer
- 2) 700-06 Nut Plate

857M3

- 1) 'B' Clamp
- 1) M8 X 25 Hex
- 5) M6 X 20 Flanged Hex
- 5) 833 Cupped Washer
- 1) 833-8 Cupped Washer

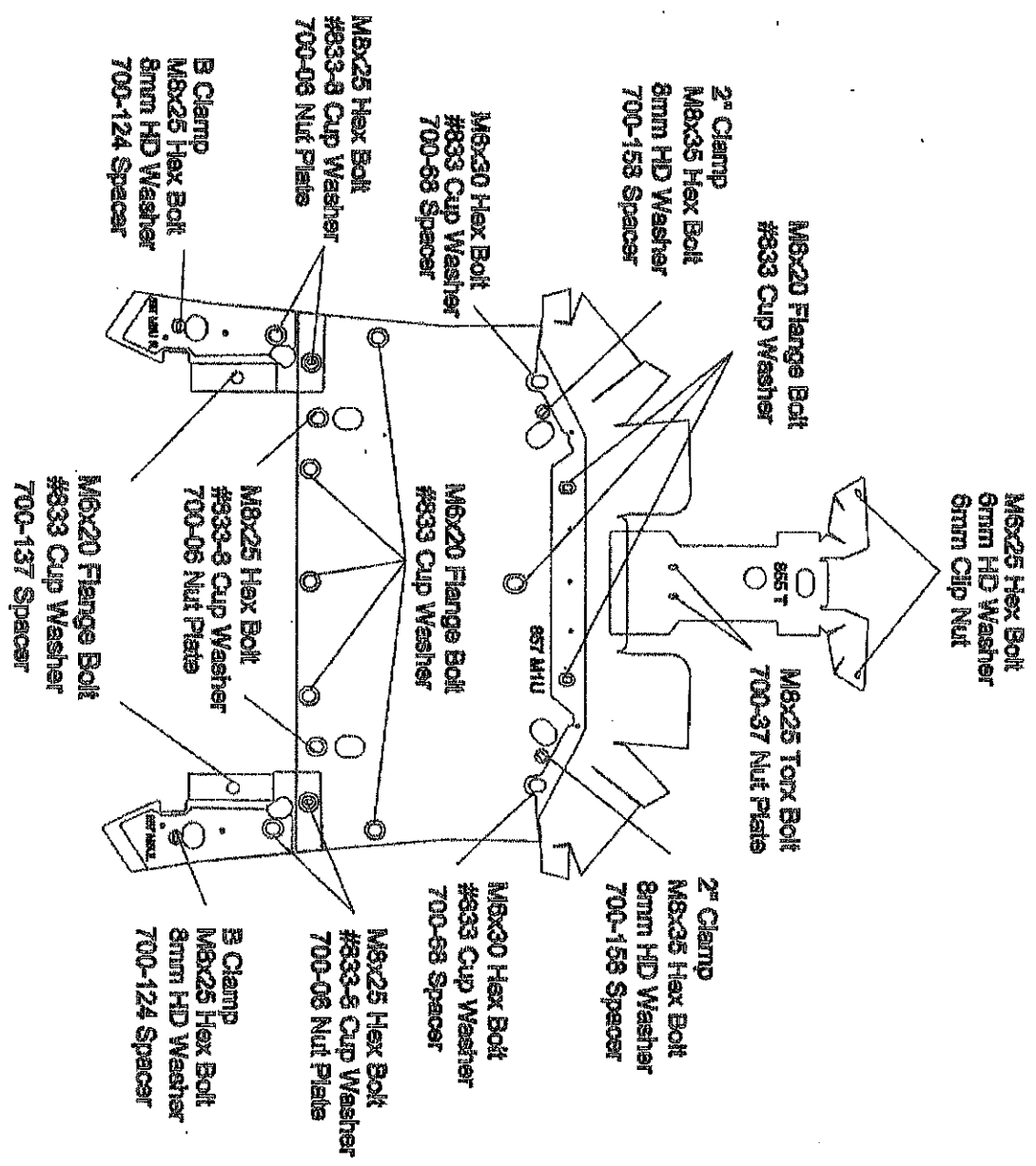
855RU

- 2) '2' Clamp
- 1) 'A' Clamp
- 1) M8 X 30Hex
- 3) M8 X 20 Hex
- 4) 8mm H/D Washer
- 3) 700-124 Clamp Stop Spacer
- 1) 700-158 Clamp Stop Spacer
- 1) 700-06 Nut Plate

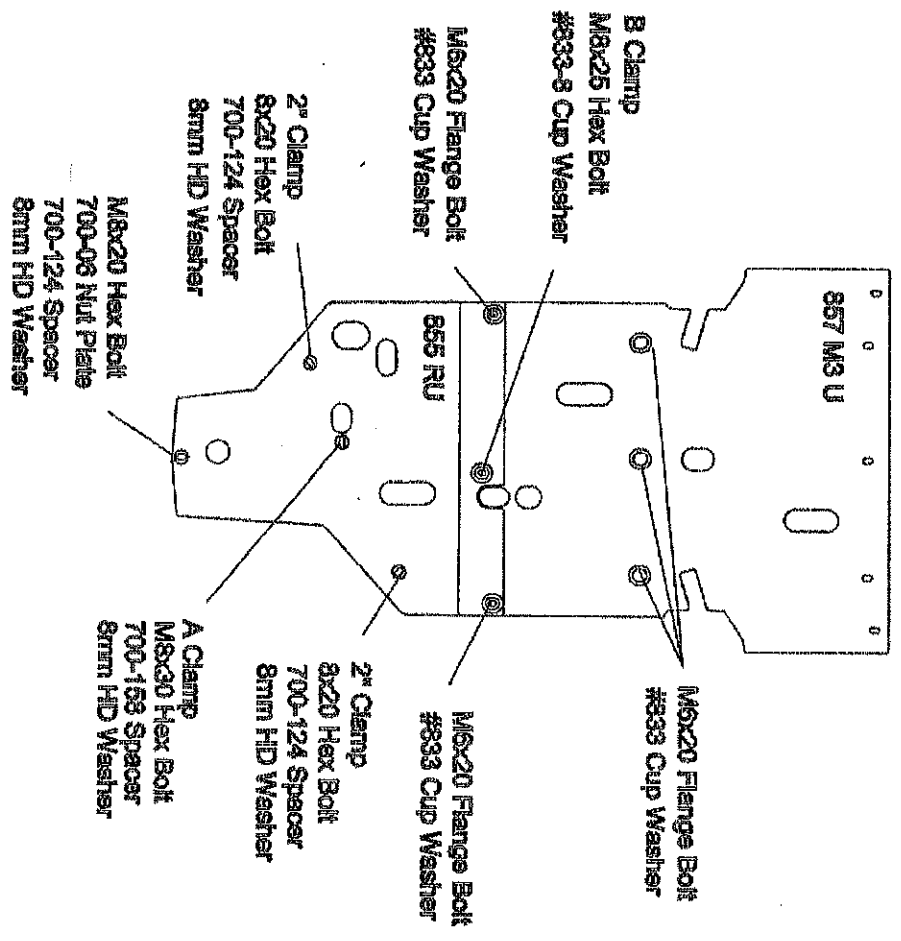
Additional Hardware

- 6) ¼" X ¾" – 20 Self Tapping Hex
- 1) ¼" X 1" – 20 Self Tapping Hex

857 U Hardware Placement Guide Pg. 1



857 U Hardware Placement Guide Pg. 2



Hardware Identifier P/N 855-U / 857-U



6mm
Clp Nut



700-37
Nut Plate
(Not Used on 857-U)



700-06
Nut Plate



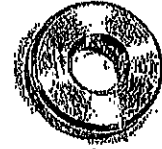
700-158
Clamp Stop Spacer



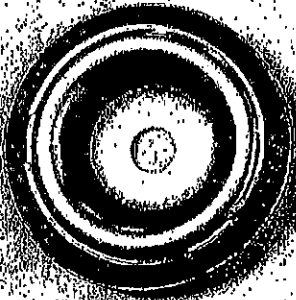
700-124
Clamp Stop Spacer



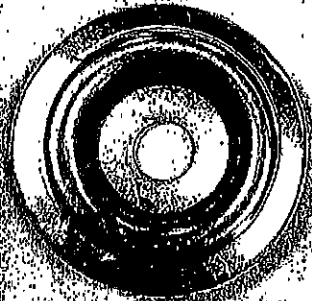
700-68
Spacer



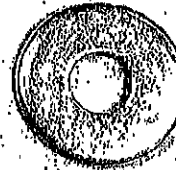
700-137
Spacer



833
Cupped Washer



833-8
Cupped Washer (8mm)



8mm
H/D Washer



6mm
H/D Washer



6mm
Std. Hex



6mm
Flanged Hex



8mm
Std. Hex



8mm
Cross Head Torx

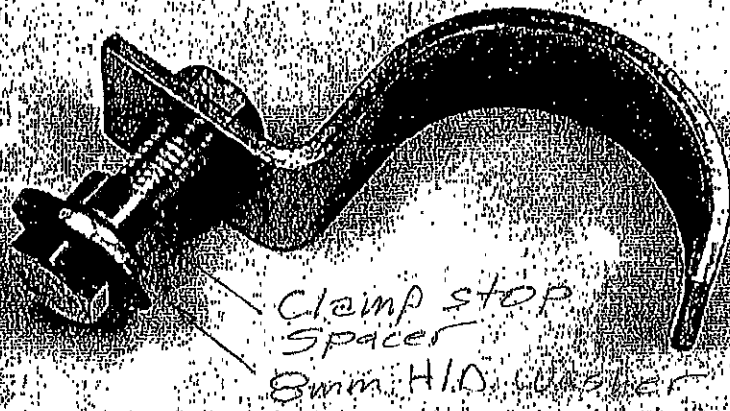


Fig. 1

Clamp, Clamp Stop Spacer, Washer Configuration

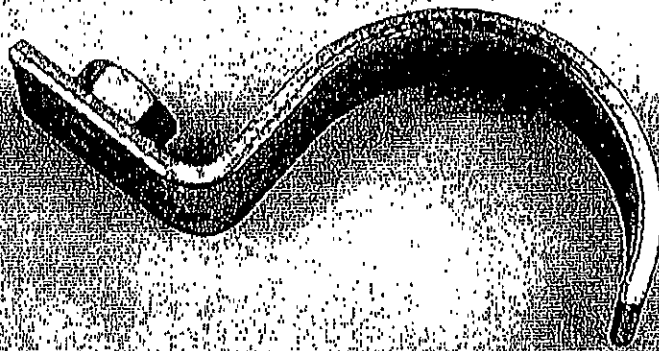


Fig. 2

Clamp Size
Stamped Here



Fig. 3