



UTV & ATV Armor Kit Installation Tips

Thank for your purchase of this Ricochet Off-Road Armor Kit. All of our kits are custom designed to fit each model and should install hassle free with no additional modifications required. Please carefully read through all included instruction sheets before beginning your install.

The tips described on this sheet are general mounting tips that may or may not apply to your particular model, refer to the attached model specific instructions for a step by step mounting procedure.

If you do encounter a problem during installation please check the FAQ on our website or feel free to contact us by phone or email using the contact info at the bottom of this page.

Required Tools:

(refer to your hardware placement guide for bolt sizes)

Button Head TORX Bolts: (socket bit is highly recommended)

8mm bolts use a T-40 TORX bit

6mm bolts use a T-30 Torx bit

Hex Bolts & Nuts:

10mm bolts uses 17mm

8mm bolts uses 13mm

6mm bolts uses 10mm

1/4"-20 bolts uses 7/16"

Drill Bits:

While we try to avoid drilling whenever possible some models require one or two mounting points to be match drilled. When instructions call for a drilled mounting point use an **11/32"** bit to match drill through the mounting point on the skid plate only after the plate has been fully secured to your machine using the other hardware listed on your hardware guide.

Locking Nuts:

Most sets will include two types of locking nuts. Loose nuts are Nylock, and any nuts welded onto other hardware are pinch-style Stover lock nuts. It is highly recommended that you use a bit of Anti-seize or a drop of oil on the threads of the welded-on pinch style nuts, this will make the bolts go on and come off much easier.

Other helpful tips:

- Before you begin the installation organize all the included hardware according to the hardware placement sheet so you can quickly find the correct bolts and brackets when you need them.
- Install all bolts finger-tight at first until all hardware has been installed, this will give you maximum adjustability.
- When using the cupped washers to secure the plates to factory mounting points do not over torque the bolts because the threads can strip easily. If you do strip one out the simplest way to repair the thread is to use a 1/4"-20 x 5/8" self tapping bolt.
- You may find it easier to remove the rear tires when installing the rear a-arm guards, it's typically very tight and hard to see when the tires are left on.

Contact us at 1-866-273-1197 or dh_gibbs@comcast.net with any questions or concerns.

Hardware List & Mounting Instructions for P/N 7880/F

Main Aluminum Skid Plates

(p/n 767T, 780M1, 780M2, 767M3, 767R)

- 27) #833 Gold Cupped Washers
- 6) #700-06 Nut Plates
- 2) #838 Square Clamp
- 27) 6mm Flange Bolts
- 16) 8 x 25mm Button Head Bolts
- 24) 8mm Flat Washers
- 8) 8mm Nylock Nuts
- 1) 6mm Tap & Handle

Rock Sliders

(p/n 780FBFA, 780FBFB, 780FBRA, 780FBRB)

- 2) #700-07 Bar Clamps
- 4) #700-52 "L" Bracket
- 2) #700-13 Spacers
- 14) 8 x 25mm Button Head Bolts
- 8) 8 x 25mm Hex Bolts
- 2) 8 x 55mm Button Head Bolts
- 12) 8mm Nylock Nuts
- 28) 8mm Flat Washers

Front A-Arm Guards

(p/n 767AFA, 767AFB)

- 6) 1" Clamps
- 6) 8 x 20mm Button Head Bolts
- 6) 8mm Flat Washers

Rear A-Arm Guards

(p/n 767ARA, 767ARB)

- 2) #700-40 Nut Plates
- 4) #835 Clamps
- 4) 8 x 25mm Button Head Bolts
- 4) 8 x 20mm Button Head Bolts
- 8) 8mm Flat Washers

UHMW Layer

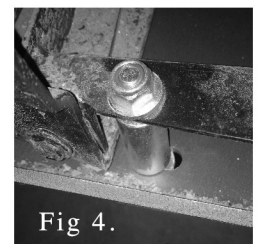
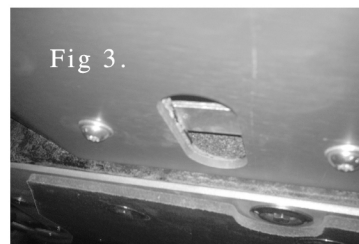
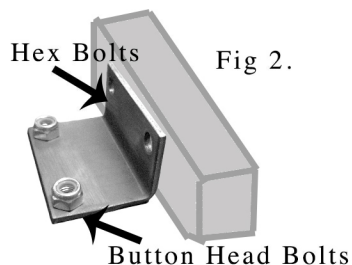
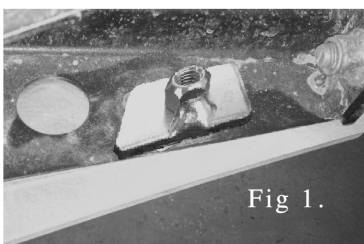
(p/n 780P1, 780P2, 780P3)

- 40) #833 Gold Cupped Washers
- 40) 6mm Flange Bolts
- 2) #832-8 Silver Cupped Washers
- 2) 8 x 35mm Button Head Bolts



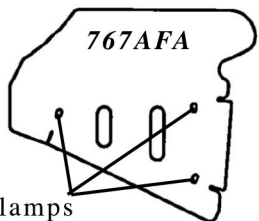
Mounting Instructions

1. Remove all factory plastic skid plates
2. Some of the mounting points used to install the main aluminum skid plates will need to be tapped to a 6mm thread, we have included a tap and handle for this. You can use the skid plates as a reference to where each mounting point is located. Hold each skid plate into place lining up the 1" holes on the skid plate with the threaded mounts used to install the factory plastic skid plate, you will notice some of the outer mounting points not used by the factory skid will need to be tapped. Apply a bit of oil to the tap and twist it completely through each hole. If you have trouble threading bolts into any of the pre-tapped holes you can also use the 6mm tap to chase out these threads.
3. Once all the mounting points have threads you can install your main aluminum skid plates, using the gold cupped washers with the 6mm Flange bolts. It doesn't matter which order you install them in but keep everything loose so that each plate's position can still be adjusted. Note that in addition to the cupped washers the 780M2 skid will use 2 #838 clamps wrapped around frame, the 767M3 skid uses two 8 x 25mm button head bolts secured to the frame with nylock nuts and the 767R skid uses the #700-06 nut plate braced behind the steel plate welded to the frame as shown in fig. 1. If you are installing the UHMW layer so not install the two rear #700-06 nut plates at this time.
4. Once all the mounting hardware has been installed you can begin tightening everything down while making sure each plate butts firmly against each adjacent plate.
5. Now you can install your rock sliders. Begin by installing the four #700-52 "L" brackets on each side of the bracing bar that attaches the main frame to the outer frame as shown in fig. 2. Note that you use the hex bolts and a nylock nut to secure the bracket to the frame and you will use the button head bolts to attach the rock slider to the bracket.
6. Before you mount the rock slider place the #700-07 bar clamp across the oval hole on the steel plate welded to the frame just behind the front tire as shown in fig. 3. you can use the access hole in the skid plate to align the bar clamp with the mounting holes on the rock slider as you feed in the 8 x 25mm button head bolts.
7. With the #700-52 and #700-07 brackets in place install your rock slider using the 8 x 25mm button head bolts with washers. The front section of the rock slider will overlap the rear section. Complete the installation by securing the rear section using the 8 x 55mm button head bolts fed through the spacer and secured with a nylock nut as shown in fig. 4. And finally secure the rear tab to the frame tube using the 8 x 25mm button head bolt with nylock nut and washers.
8. Now install your front and rear a-arm guards using the hardware shown on your hardware placement guide. Hold the A-arm guard into place as you wrap each clamp around the a-arm tube and feed in an 8 x 20mm button head bolt. The bar clamp sits on top of the bracing plate on the rear a-arm and is mounted with the 8 x 25mm button head bolts. Once the a-arm guards are installed turn the wheel to full lock in both directions, checking for any interferences. If an interference exists loosen the bolts and adjust the guards position accordingly.
9. If you have purchased the UHMW layer you can install that now, using the gold cupped washers and flange bolts mounted to each threaded insert on the aluminum skid plates. The only exception is the two rear-most mounting points which will use the silver cupped washers with the 8 x 35mm button head bolts inserted through the rear mounting points on the aluminum skid plate and secured to the frame with the #700-06 nut plates.



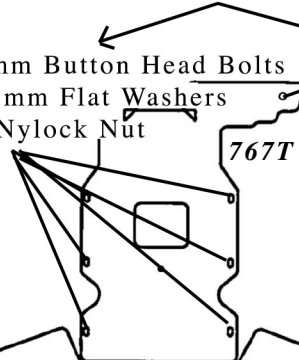
Hardware Placement Guide for P/N 7880/F

8 x 25mm Button Head Bolts
 8mm Flat Washer
 #700-06 Nut Plate

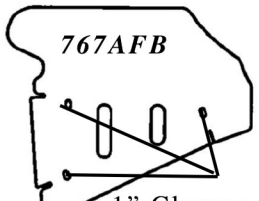


1" Clamps
 8x20mm Button Head Bolt
 8mm Flat Washer

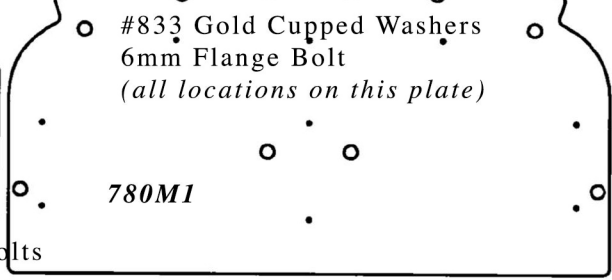
8x25mm Button Head Bolts
 (2x) 8mm Flat Washers
 8mm Nylock Nut



767T



1" Clamps
 8x20mm Button Head Bolt
 8mm Flat Washer



#833 Gold Cupped Washers
 6mm Flange Bolt
 (all locations on this plate)

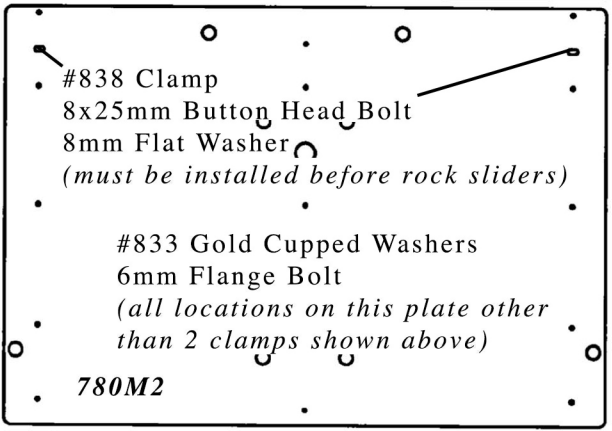
780M1

780FBFA

#700-07 Bar Clamp
 (2x)8x25mm Button Head Bolts
 (2x)8mm Flat Washers

780FBFB

#700-07 Bar Clamp
 (2x)8x25mm Button Head Bolts
 (2x)8mm Flat Washers



#838 Clamp
 8x25mm Button Head Bolt
 8mm Flat Washer
 (must be installed before rock sliders)

780M2

#700-52 "L" Bracket
 ATTACH BAR CLAMP
 TO FRAME WITH

(2x)8x25mm Hex Bolts
 (2x)8mm Flat Washers
 (2x)8mm Nylock Nuts
 ATTACH SKID PLATE TO
 BAR CLAMP WITH
 (2x)8x25 Button Head Bolts
 (2x)8mm Flat Washer

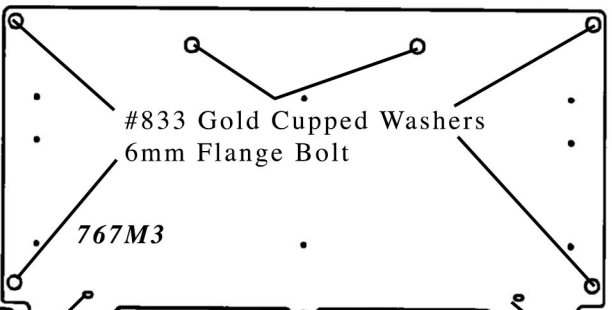
780FBRA

#700-52 "L" Bracket
 ATTACH BAR CLAMP
 TO FRAME WITH

(2x)8 x 25mm Hex Bolts
 (2x)8mm Flat Washers
 (2x)8mm Nylock Nuts
 ATTACH SKID PLATE TO
 BAR CLAMP WITH
 (2x)8x25 Button Head Bolts
 (2x)8mm Flat Washer

780FBRB

8x55mm Button Head Bolt
 #700-13 Spacer
 (2x)8mm Flat Washer
 8mm Nylock Nut



#833 Gold Cupped Washers
 6mm Flange Bolt

767M3

8x55mm Button Head Bolt
 #700-13 Spacer
 (2x)8mm Flat Washer
 8mm Nylock Nut

8x25mm Button Head Bolt
 (2x)8mm Flat Washer
 8mm Nylock Nut

8x25mm Button Head Bolt
 (2x)8mm Flat Washer
 8mm Nylock Nut

#833 Gold Cupped Washers
 6mm Flange Bolt

#700-06 Nut Plate
 8 x 25mm Button Head Bolt
 8mm Flat Washer

767R

767ARA

#700-40 Nut Plate
 (2x)8x25mm Button Head Bolt
 (2x)8mm Flat Washer

#835 Clamp
 8x20mm Button Head Bolt
 8mm Flat Washer



767ARB

#700-40 Nut Plate
 (2x)8x25mm Button Head Bolt
 (2x)8mm Flat Washer

#835 Clamp
 8x20mm Button Head Bolt
 8mm Flat Washer