

Ranger Floor Board Skid Instructions

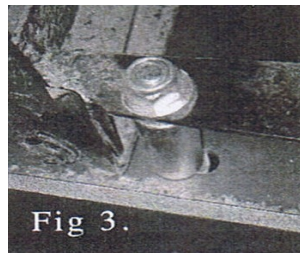
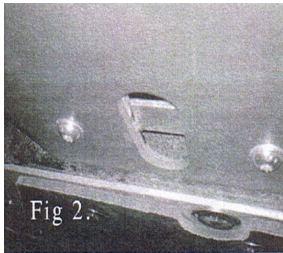
Part # 767FB

Step One: Before installing your floor board skid you need to put the 700-07 bar clamp in position. This bar clamp will go across the oval hole on the steel plate on the frame just behind the front tire. As shown in Fig.2.

Step Two: With the 700-07 bar clamp in place, you can now start the installation of your floor board skid, using two of your 8x35 bolts and washers secured to the bar clamp. Be sure to use anti seize on these bolts. You can use the access hole in the skid plate to align the bar clamp with the mounting holes in the skid plate. Leave these loose for now.

Step Three: To complete the installation You will run your 8x55 bolt with a washer through the mounting hole in the skid in the rear section. Slide the spacer between the frame and the plate, and install the second washer and the nylock nut. As shown in Fig 3

Step Four: Secure the rear tab to the frame using an 8x25 bolt, washers, and a nylock nut. After all hardware is started you can square up the plate and tighten all of your hardware. It is the same procedure for both sides of the machine.



Hardware List for 767FB

- 2) 700-07 Bar Clamps
- 2) 700-13 Spacers
- 2) 8x25 Torx Bolts
- 4) 8x35 Torx Bolts
- 2) 8x55 Torx Bolts
- 4) M8 Nylock Nuts
- 6) M8 Washers