



# UTV & ATV Armor Kit Installation Tips

Thank for your purchase of this Ricochet Off-Road Armor Kit. All of our kits are custom designed to fit each model and should install hassle free with no additional modifications required. Please carefully read through all included instruction sheets before beginning your install.

The tips described on this sheet are general mounting tips that may or may not apply to your particular model, refer to the attached model specific instructions for a step by step mounting procedure.

If you do encounter a problem during installation please check the FAQ on our website or feel free to contact us by phone or email using the contact info at the bottom of this page.

## **Required Tools:**

(refer to your hardware placement guide for bolt sizes)

## **Button Head TORX Bolts:** (socket bit is highly recommended)

8mm bolts use a T-40 TORX bit

6mm bolts use a T-30 Torx bit

## **Hex Bolts & Nuts:**

10mm bolts uses 17mm

8mm bolts uses 13mm

6mm bolts uses 10mm

1/4"-20 bolts uses 7/16"

## **Drill Bits:**

While we try to avoid drilling whenever possible some models require one or two mounting points to be match drilled. When instructions call for a drilled mounting point use an **11/32"** bit to match drill through the mounting point on the skid plate only after the plate has been fully secured to your machine using the other hardware listed on your hardware guide.

## **Locking Nuts:**

Most sets will include two types of locking nuts. Loose nuts are Nylock, and any nuts welded onto other hardware are pinch-style Stover lock nuts. It is highly recommended that you use a bit of Anti-seize or a drop of oil on the threads of the welded-on pinch style nuts, this will make the bolts go on and come off much easier.

## **Other helpful tips:**

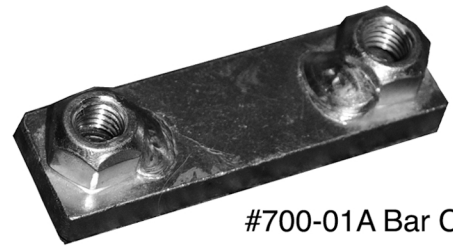
- Before you begin the installation organize all the included hardware according to the hardware placement sheet so you can quickly find the correct bolts and brackets when you need them.
- Install all bolts finger-tight at first until all hardware has been installed, this will give you maximum adjustability.
- When using the cupped washers to secure the plates to factory mounting points do not over torque the bolts because the threads can strip easily. If you do strip one out the simplest way to repair the thread is to use a 1/4"-20 x 5/8" self tapping bolt.
- You may find it easier to remove the rear tires when installing the rear a-arm guards, it's typically very tight and hard to see when the tires are left on.

**Contact us at 1-866-273-1197 or [dh\\_gibbs@comcast.net](mailto:dh_gibbs@comcast.net) with any questions or concerns.**

# Hardware List for Polaris Touring (P/N 7474)

## Frame Skids (P/Ns 747T, 747M, 747R):

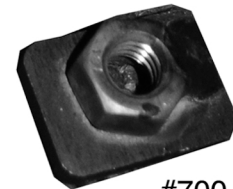
- 2) 8 x 40mm Button Head Bolts
- 3) 8 x 20mm Button Head Bolts
- 9) 8 x 25mm Button Head Bolts
- 4) 6 x 20mm Button Head Bolts
- 4) 6mm Flat Washers
- 14) 8mm Flat Washers
- 1) #700-01A Bar Clamp
- 12) #700-06 Nut Plates
- 4) #700-47 Nut Plates



#700-01A Bar Clamp



#700-06 Nut Plate



#700-47 Nut Plate

## Front A-Arm Guards (P/Ns 629AFA, 629AFB):

- 6) 7/8" Frame Clamps
- 6) 8 x 20mm Button Head Bolts
- 6) 8mm Flat Washers

## Rear A-Arm Guards (P/Ns 718ARA, 718ARB)

- 4) #5 Frame Clamps
- 4) 8 x 50mm Button Head Bolts
- 4) 8 x 20mm Button Head Bolts
- 8) Standard 8mm Flat Washers
- 4) HD 8mm Flat Washers (larger ones)
- 4) 8mm Nylock Nuts

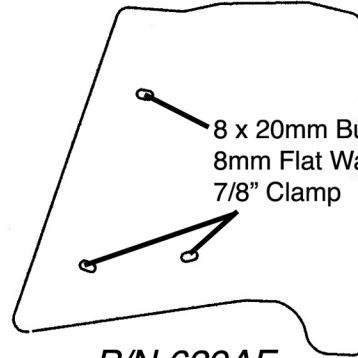
## Installation Instructions

1. For easiest installation it is best to lift your ATV upright on the rear wheels, Make sure you take the proper precautions to secure it in this position. It is also recommended that you remove the seats to prevent fuel from dripping onto them and to kink off the battery venting line.
2. Remove the factory plastic guards from the front & rear A-arms.
3. This set is secured to the frame using the three different sized nut plates shown above. Refer to the hardware placement guide to determine the correct positions of each nut plate. Because of the locking feature on the nut it is recommended that you use a drop of oil or anti sieze compound on the thread of each bolt. Beginning with the rear skid, first hold it in its proper position to determine which hole on the frame the nut plate will need to be lined up with. Feed the correct length bolt through the mousing point on the skid plate and into the nut plate held behind the steel frame. Leave the bolts loose at this time to allow the plates position to float slightly.
4. Once the rear plate is in place repeat the process described above with the center and front skid plates until every bolt is threaded into a nut plate. The front plate will overlap the center plate.
5. Now you may begin tightening down each bolt while making sure each plate stays in a position that creates seamless transitions between them. Most of the time the nut plates should brace themselves against the frame and there will be no need to put a wrench on the nut. Although have a 13mm open ended wrench handy just in case one of the nut plates starts to spin.
6. Now install your A-Arm guards using the proper sized clamps as shown on your hardware placement guide. Again use a drop of oil or anti-sieze on these nuts. In addition to clamps the rear a-arm guards will use the 8 x 50mm button head bolts with nylock nuts fed through the two holes on bracing bar. The nylock nuts do not require lubrication.

# Clamp & Hardware Placement for Porlaris Sportsman Touring (P/N 7474)

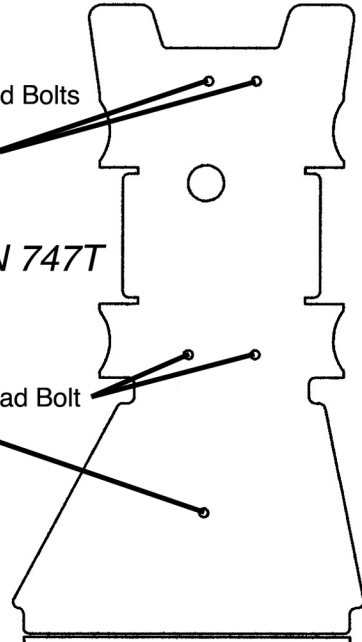
8 x 40mm Button Head Bolts  
8mm Flat Washer  
#700-01A Bar Clamp

P/N 747T



P/N 629AF

8 x 20mm Button Head Bolt  
8mm Flat Washer  
#700-06 Nut Plate

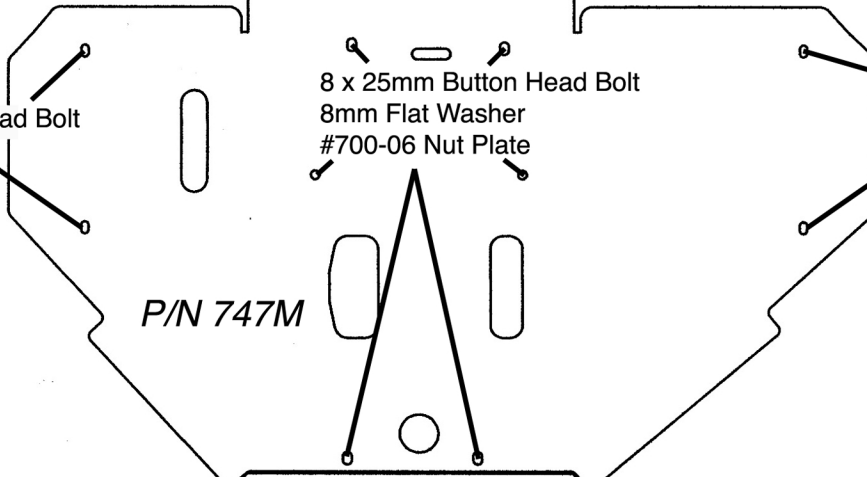


P/N 747M

8 x 25mm Button Head Bolt  
8mm Flat Washer  
#700-06 Nut Plate

6 x 20mm Button Head Bolt  
6mm Flat Washer  
#700-47 Nut Plate

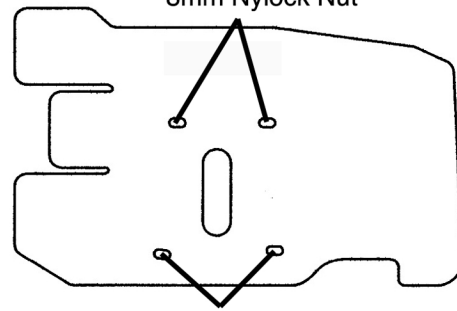
6 x 20mm Button Head Bolt  
6mm Flat Washer  
#700-47 Nut Plate



P/N 747R

8 x 25mm Button Head Bolt  
8mm Flat Washer  
#700-06 Nut Plate

8 x 50mm Button Head Bolt  
Standard 8mm Washer (bolt side)  
Large 8mm Washer (nut side)  
8mm Nylock Nut



P/N 718AR

8 x 20mm Button Head Bolt  
8mm Washer  
#5 Clamp