

Installation Instructions BMW R1200 GS p/n 285

1. Remove the factory skidplate including the 2 rubber mounts and the bracket up front.
2. On the front mount on the motor there is a counter bore on the right side. Take the supplied spacer p/n 700-86 and slide it into that counter bore. Now install the 2 'L' brackets p/n 700-85 using the same 10mm bolt that mounted the factory skidplate bracket, Fig. 1. Leave the nut finger tight. Also we recommend that you use a bit of Loctite on that.
3. Now take the tightening jig, (that rectangular piece of aluminum with the 2 spacers welded on) using the supplied mounting bolts (the 8mm X 35mm go into the rear and the 8mm X 25mm are used in the front) and install that with the spacers rearward and facing up to the 'L' brackets and the tapped holes where the 2 rubber mounts were. Snug these bolts up. This holds the 'L' brackets in alignment so you now tighten the 10mm bolt holding the 'L' brackets.
4. Remove the tightening jig and install the skidplate.

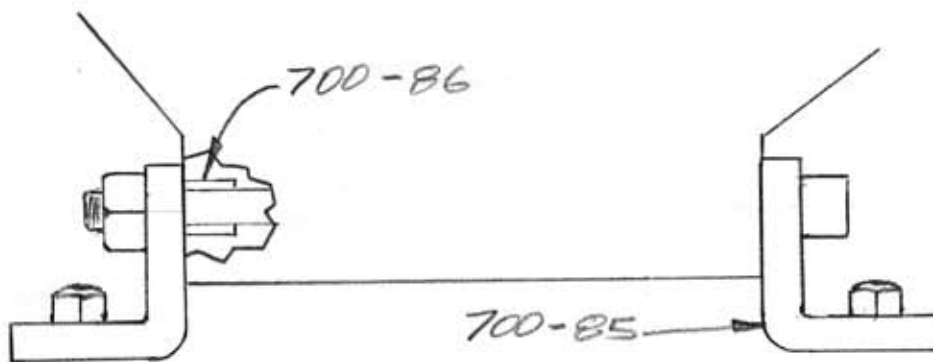


Fig. 1