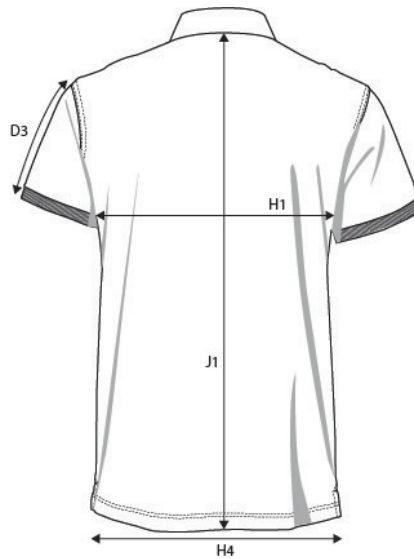


NIMBUS® | *Play*

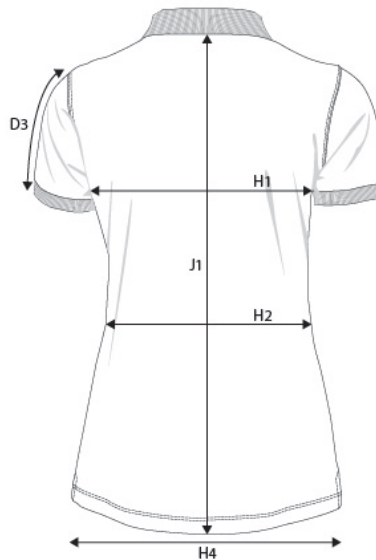
PRODUCT MEASUREMENT SIZE AND FIT: BAYFIELD



BAYFIELD Mens

Base size: **M** / Measurement (in cm)

	Diagram	S	M	L	XL	XXL	3XL	4XL
SLEEVE LENGTH - from shoulder seam	D3	19	20	21	22	23	24	25
CHEST WIDTH at armhole	H1	49	52	55	58	61	64	67
BOTTOM WIDTH	H4	49	52	55	58	61	64	67
FULL LENGTH at centre back	J1	69	71	73	75	77	79	81



BAYFIELD Ladies

Base size: **M** / Measurement (in cm)

	Diagram	XS	S	M	L	XL	XXL	3XL
SLEEVE LENGTH - from shoulder seam	D3	17	17,5	18	18,5	19	19,5	20
CHEST WIDTH at armhole	H1	43	46	49	52	55	58	62
WAIST	H2	40	43	46	49	52	56	60
BOTTOM WIDTH	H4	43	46	49	52	55	58	62
FULL LENGTH at centre back	J1	60	62	64	66	68	70	72



SIZE GUIDE

LADIES

CM

	EN / UK / US XS / 8 / 4	EN / UK / US S / 10 / 6	EN / UK / US M / 12 / 8	EN / UK / US L / 14 / 10	EN / UK / US XL / 16 / 12	EN / UK / US 2XL / 18 / 14	EN / UK / US 3XL / 20 / 16
CHEST	75-80	81-86	87-92	93-98	99-104	105-111	112-118
WAIST	59-64	65-70	71-76	77-82	83-88	89-95	96-103
HIP	83-88	89-94	96-101	102-107	108-113	114-120	121-127

MENS

CM

	EN / UK + US S	EN / UK + US M	EN / UK + US L	EN / UK + US XL	EN / UK + US 2XL	EN / UK + US 3XL	EN / UK + US 4XL
NECK	37/38	39/40	41/42	43/44	45/46	47/48	49/50
CHEST	90-95	96-101	102-107	108-113	114-119	120-125	126-131
WAIST	76-81	82-87	88-93	94-99	100-105	106-111	112-117
HIP	92-97	98-103	104-109	110-115	116-121	122-127	128-133

HOW TO MEASURE

