

Body-Solid  
**ProClub** Line



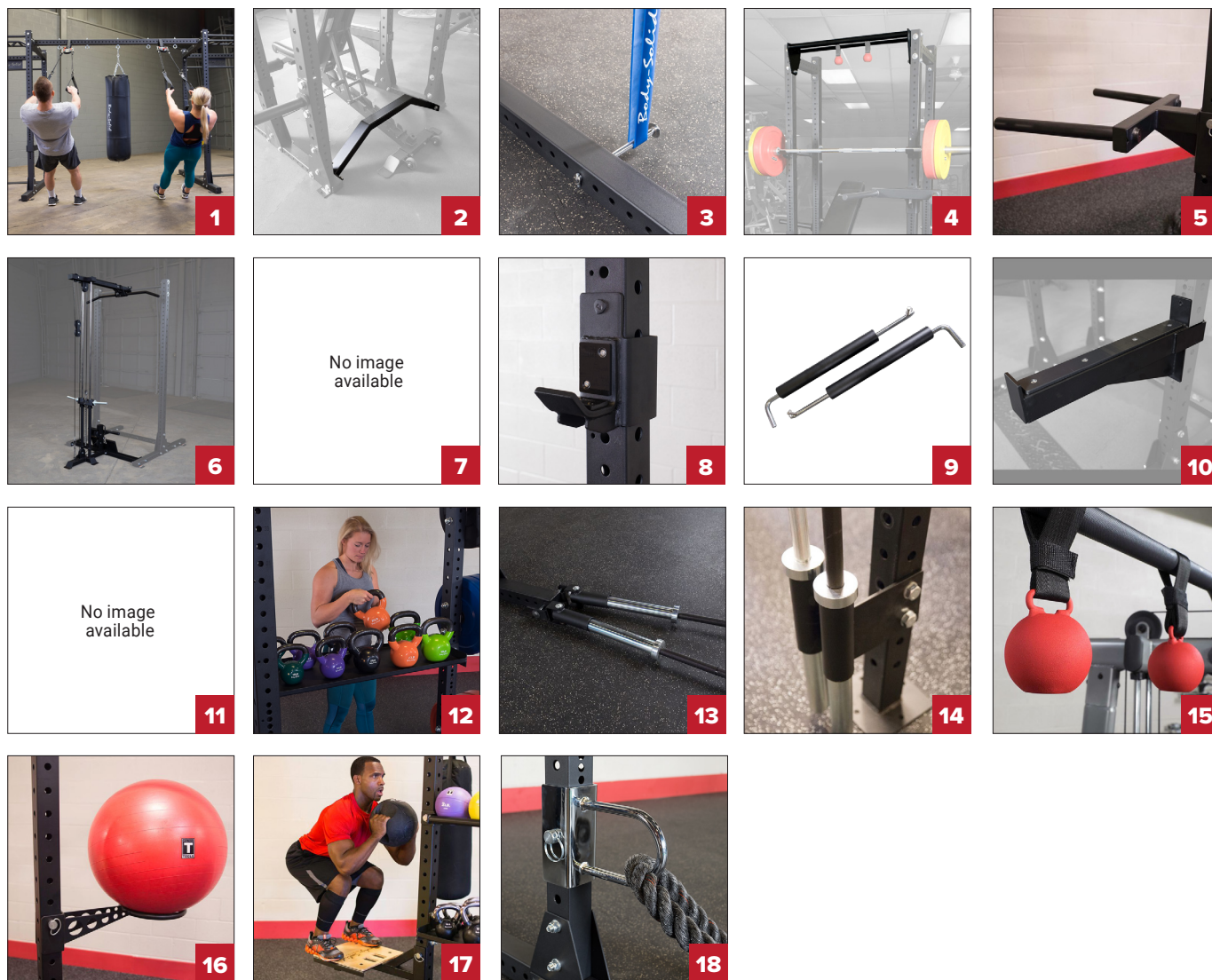
**SP500**  
COMMERCIAL HALF RACK



# Optional Attachments

Body-Solid's full commercial power Half Rack, the SPR500, features everything you could want on a power rack today.

The SPR500 Commercial Half Rack is designed to excel in heavy use facilities like high schools, colleges and universities, police and fire departments, military facilities, sports performance training facilities, and any commercial gym or training studio.



Accessories shown on the attachments are not included.

1	<b>SPRACB</b>	Connecting bar	€275
2	<b>SPRBCB</b>	Bench Clearance Back Bar	€119
3	<b>SPRBP</b>	Band Pegs	€55
4	<b>SPRDCB</b>	Dual Chin-Up Bar	€125
5	<b>SPRDIP</b>	Dip Attachment	€ 299
6	<b>SPRHLA</b>	Lat Attachment	€595
7	<b>SPRHT</b>	Hip Truster	€175
8	<b>SPRJ-C</b>	J-Cups	€119
9	<b>SPRPS</b>	Pin & Pipe Safeties	€89

10	<b>SPRSA</b>	Spotter Arms	€189
11	<b>SPRSP</b>	Spotter Stand	€215
12	<b>SPRST</b>	Storage Tray	€199
13	<b>SPRTB</b>	Dual T-Bar Row	€95
14	<b>SR-BHV</b>	Vertical Bar Storage	€ 95
15	<b>SR-CB</b>	Cannon Ball Grips	€ 35
16	<b>SR-SBH</b>	Stability Ball Holder	€ 209
17	<b>SR-STEP</b>	Step (Plyo) Attachment	€ 369
18	<b>SR-UL</b>	U Link Attachment	€ 115

# SPR500



COMMERCIAL HALF RACK  
**SPR500**

Retail

€995



COMMERCIAL HALF RACK  
EXTENSION **SPR500HALFBACK**

Retail

€695



COMMERCIAL EXTENDED  
HALF RACK **SPR500BACK**

Retail

€1595

# IDEAL FOR ALL OLYMPIC LIFTS, DEADLIFTS, SQUATS AND MORE

The Body-Solid Pro Clubline SPR500 Commercial Half Rack is a full commercial half rack built for heavy weight training in any facility.

An alternative to traditional power racks, Half Racks are great space savers providing a smaller footprint than most enclosed power racks. The Pro Clubline SPR500 Commercial half rack is an all-purpose weight training station. The SPR500 Commercial Half Rack is ideal for all Olympic lifts, deadlifts, squats and more.

Designed with a steel mainframe, the SPR500 provides solid, stable and safe workouts even under the heaviest training conditions. The SPR500 Commercial Half Rack features laser-cut numbers, premium j-cup liftoffs, safety spotter arms and an integrated chinning bar for pull-ups, chin-ups and upper body development. The hole spacing for the spotter arms are every 25 mm, ensuring users will always find the perfect stretch without fear of compromising safety.

Several optional attachments allow you increase function and customize the SPR500 to your specific facility needs, such as the SPR500HALFBACK, a rear extension with four weight horns for easier weight storage and organization.

Heavy-use group fitness facilities can use the SPRACB Power Rack Connecting Bar to bolt together two or more SPR500 Half Racks or one each of the SPR1000 and SPR500 Half Rack for unlimited expansion and rig-building opportunities.



## TECHNICAL SPECIFICATIONS

- 76 X 76 mm 11-gauge steel mainframe
- 25 mm hole spacing for safety spotter bars
- Ideal for olympic lifts, deadlifts, squats and more
- Includes 2 premium J-cup liftoffs
- Includes 2 safety spotter arms
- Integrated chinning bar
- Laser-cut numbers
- **Dimensions:** L 127.6 x W 133.5 x H 226.7 cm
- **Net weight:** 94.4 kg
- **Weight capacity:** 450 kg
- Body-Solid In-Home Lifetime Warranty
- Body-Solid Full Commercial Warranty

**Body-Solid**<sup>®</sup>  
Built for Life

Stadsheide 3, 3500 Hasselt, Belgium  
Tel: +32 11 76.12 .70  
info@ bodysolid-europe.com  
[www.bodysolid-europe.com](http://www.bodysolid-europe.com)