

# Carpet Spot and Stain Remover

MANCHESTER  
1824



## Product Usage Guide

Professional

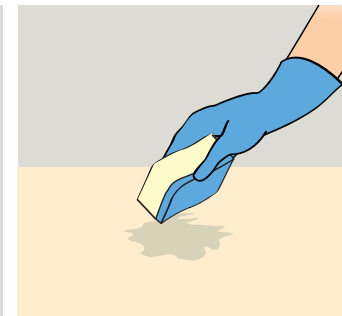
### BE021-75



**1** Use appropriate PPE as indicated in the Safety Data Sheet.



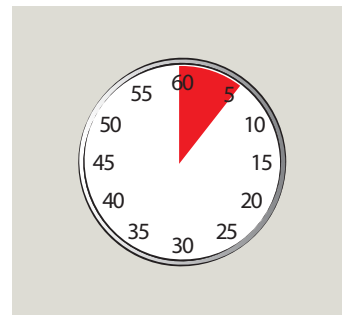
**2** Place Safety Signs.



**3** Agitate dry spots, careful not to damage delicate fabrics.



**4** Spray directly onto affected area. Allow liquid to penetrate.



**5** Wait for 5 minutes



**6** Absorb the stain out by blotting with white tissue paper or extract with a machine.



**7** Once surface is dry remove Safety Signs.

#### Health & Safety

Please refer to relevant COSHH Safety Data Sheet



Scan for further product details



Always test a small inconspicuous area for colour fastness.



Recycle when empty