

Foaming Bactericidal Cleaner

MANCHESTER
1824



Product Usage Guide

Professional

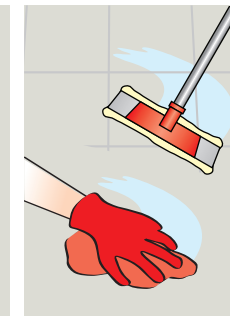
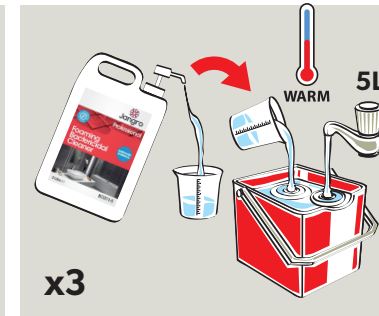


BC011-5



General Cleaning

Toilets
RED



1 Use PPE as indicated in MSDS.

2 Place Safety Signs.

3 Dilute 3 pumps per 5 litre of water.

4 Mop or wipe surface.

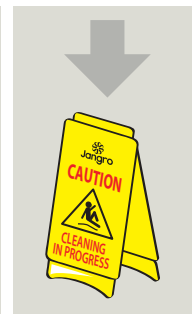
5 Once surface is dry remove Safety Signs.

RED Toilets

BLUE Washrooms

Washroom

BLUE



1 Use appropriate PPE as indicated in the Safety Data Sheet.

2 Place Safety Signs.

3 Only refill bottles if you have been trained on doing this safely and follow the risk assessment.
Do not fill from higher than waist height.

4 Spray surface. Allow a few minutes contact time if required and wipe clean with a damp cloth.

5 Once surface is dry remove Safety Signs.

Health & Safety

Please refer to relevant COSHH Safety Data Sheet



Scan for further product details



Not for use on cast iron enamelled baths, marble or limestone.



Recycle when empty