

# Foaming Bactericidal Cleaner

MANCHESTER  
1824



## Product Usage Guide

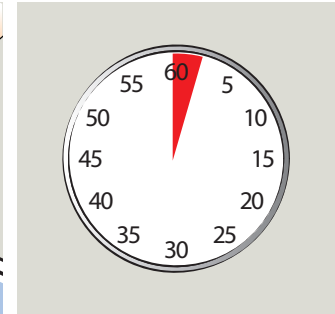
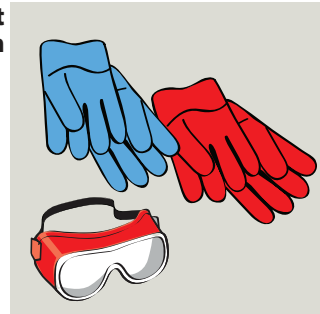
Professional



### BC010-75



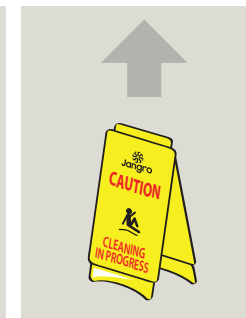
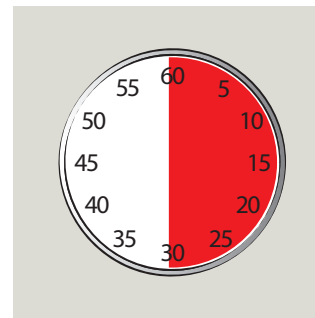
Toilet  
Washroom



- 1 Use appropriate PPE as indicated in MSDS.
- 2 Place Safety Signs.
- 3 Spray Surface
- 4 Allow a few minutes contact time if required.

**RED** Toilets

**BLUE** Washrooms



- 5 Wipe clean with a damp cloth.
- 6 Let Surface Dry.
- 7 Remove Safety Signs.

#### Health & Safety

Please refer to relevant  
COSHH Safety Data Sheet



Scan for further product details

