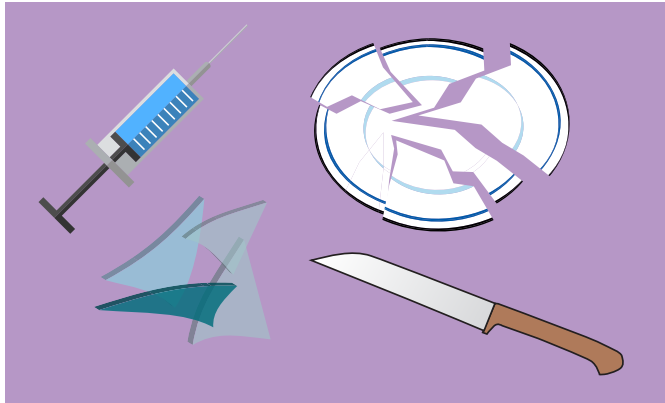


# Handling of Sharps

MANCHESTER  
1824



- 1** The risk of injury from sharps can come in many forms such as broken glasses, plates, blades or knives and hypodermic needles.



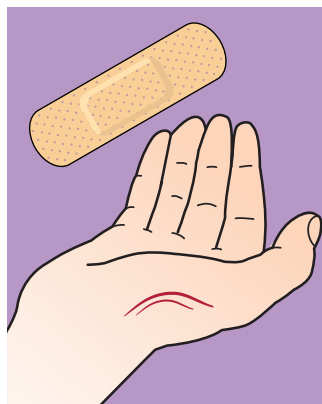
- 2** Never put your hand in anything you cannot see. Use appropriate tools to aid your task, which may include having to separate items into another bag to help with manual handling.



- 3** All refuse sacks should be clear and should be inspected on removal, items can be handled if you have a clear view of what they are.



- 4** For broken glass or crockery do not attempt to pick it up with your hands, instead it should be swept up using a dustpan and brush and put into a jiffy bag and clearly labelled.



- 5** Cuts and grazes to be covered with plasters.



- 6** Upon discovery of hypodermic needles, syringes, or other medical sharps, do not attempt to touch or remove them. Secure the area and then notify your Supervisor or Line Manager. Who will notify Security as per the Risk Assessment 034 for the safe removal of the items.



## Video Guides

Please refer to the video for further guidance.  
Scan for further details.



Wray  
Bros