

RAD WATCH USER MANUAL



July 2023



DOWNLOAD THE RAD MOBILE APP

Scan the QR code with your phone to download the Rad Mobile App or go to <https://radgolf.com/pages/download-the-rad-golf-app>.





USER MANUAL TABLE OF CONTENTS

POWER ON YOUR WATCH	4
GETTING TO KNOW YOUR WATCH HOME SCREEN	4
SETTING THE TIME	5
CHOOSE YOUR TIME FORMAT & DAYLIGHT SAVINGS MODE	5
STARTING A ROUND OF GOLF	6
PLAYING A ROUND OF GOLF	7
GOLF ROUND SCREENS	7
HAZARD ICON LIST	8
CONTROLLING YOUR RAD SPEAKERS	9
ENTERING YOUR SCORE	9
CHANGING HOLES	10
GOLF MENU	10
LET'S RUN	11
MAIN WATCH SETTINGS	11
UPDATING YOUR WATCH	12
RESETTING YOUR WATCH	13

POWER ON YOUR WATCH

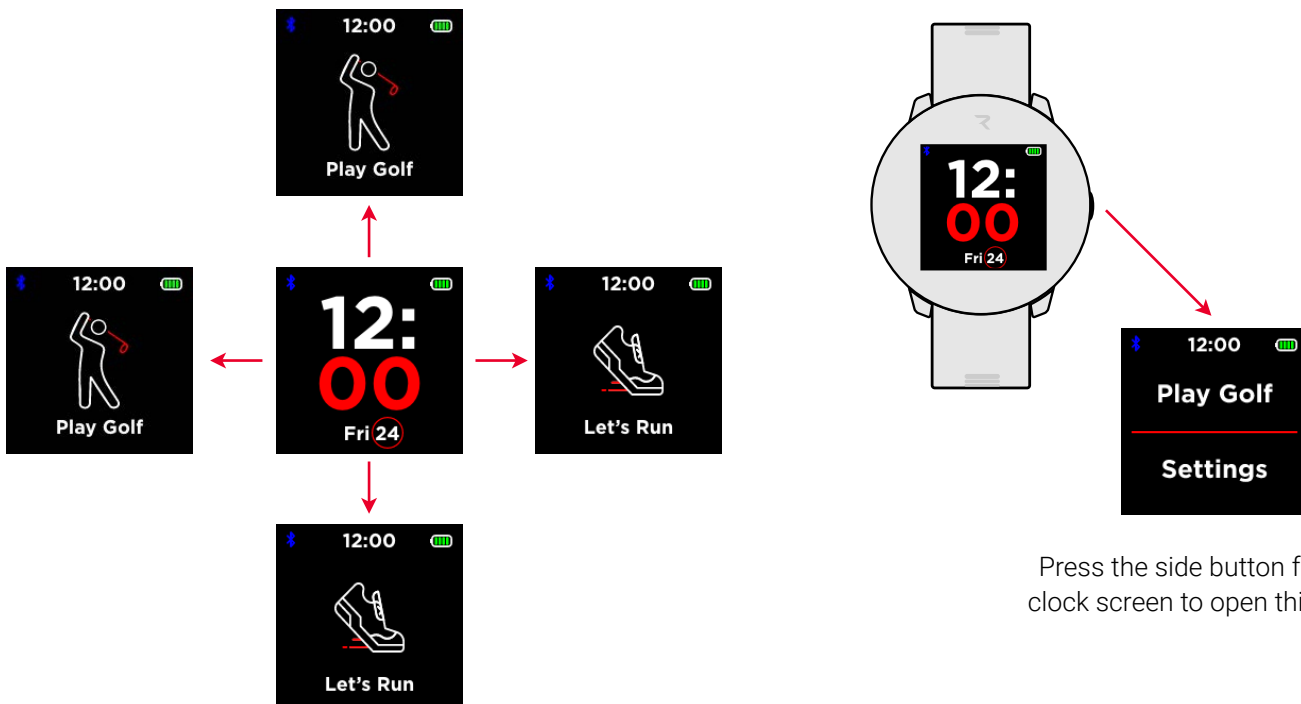
- To start your Watch, hold down the button for 3 seconds.
- “Welcome” will be followed by your startup screen for 3-5 seconds as your watch boots up



Watch Home Screen

GETTING TO KNOW YOUR WATCH HOME SCREEN

- Once your watch boots up it will change to the Clock screen. This is what we refer to as your home screen.
- From your Home Screen (Clock) you can swipe up, down, left or right to access different screens. You can also press the button on the side of the watch to bring up the Play Golf and Settings screen.
- The Diagram below shows what happens when you swipe in the different directions. One thing to note: You can continue to swipe in the same direction to cycle all the way around the different screens.
- If you press the side button while you are on any screen other than the Home Screen (Clock) it will revert to the Home Screen.

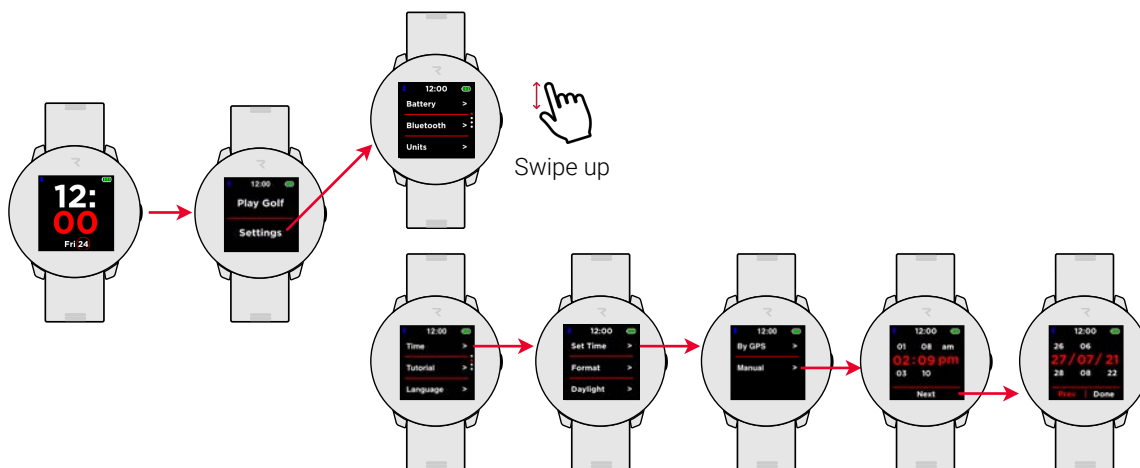
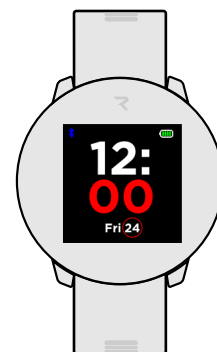


Press the side button from the clock screen to open this screen



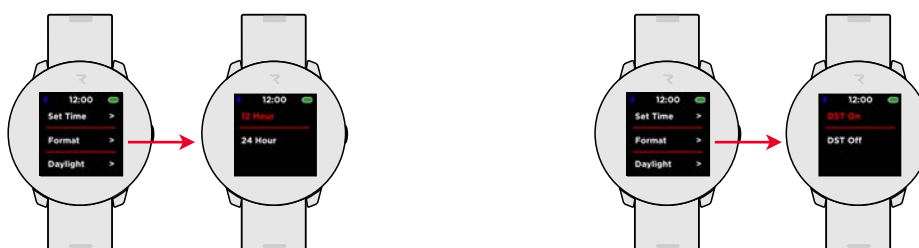
SETTING THE TIME

- The clock will not be automatically set when you turn it on the first time. However, once you connect to the Rad Mobile App it will automatically update to the correct time from your connected smartphone.
- From the Home Screen press the right button to open the Play Golf and Settings screen.
- Select Settings
 - Time is on the 2nd Settings screen. Swipe up to scroll to the 2nd page.
- Select Time
- Select Set Time
- Choose By GPS or Manual
 - If you choose Manual, then you can select the correct time and date by swiping up and down on the respective fields.



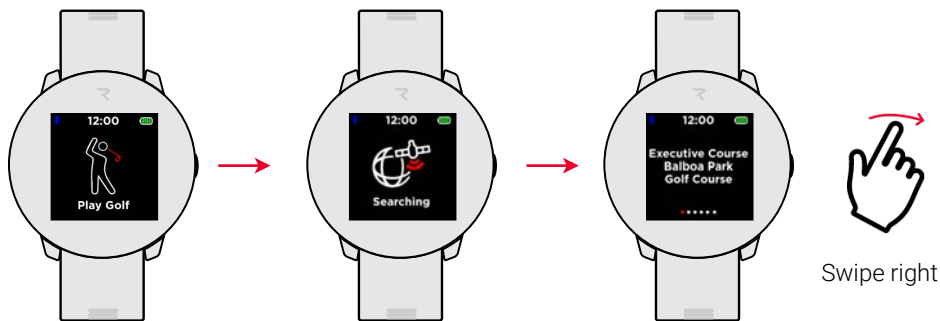
CHOOSE YOUR TIME FORMAT & DAYLIGHT SAVINGS MODE

- Select Format to choose between 12 hour and 24 hour display options
- Select Daylight to turn Daylight Savings mode On or Off

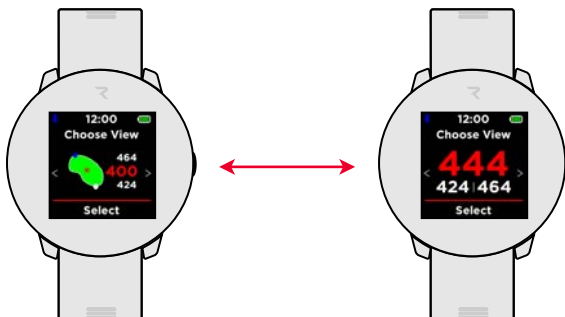


STARTING A ROUND OF GOLF

- To initiate a round of golf swipe Up or Left from the Home Screen or Press the button on the side of the watch and Select Play Golf.
- Your watch will begin looking for a GPS signal
- Once your watch has successfully fixed your GPS position, you will see a list of courses ordered from closest to your current location to furthest from your current location
- Swipe Right or Left to find your course and then tap the screen to choose.



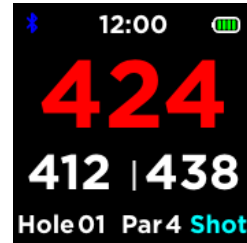
- Once you select your course you need to choose your view. Swipe Right and Left to toggle between the Green View and the Classic View and hit select.
 - Green View will provide you with a projection of the shape of the green, as well as front, center, and back distances.
 - Classic View will provide you with front, center (in red), and back distances



- Once you select your view, your round will begin.

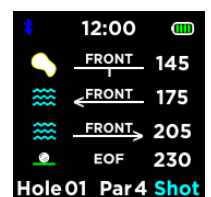
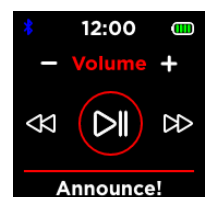
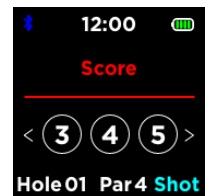
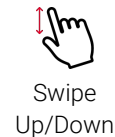
PLAYING A ROUND OF GOLF

- After selecting a view, your round will start. In an active round, you will see:
 - Front, Center and Back Distance
 - Hole number
 - Par for the Hole
 - Shot - Touch to start tracking your shot distance
 - Tap the Shot text at the beginning of your shot, at which point the watch will begin measuring your starting position to your shot landing position. Tap the number displayed to close the measurement, and tap again to begin a new measurement.



GOLF ROUND SCREENS

- While playing a round you can swipe up and down to cycle through different screens.
 - Home Screen - Shows the distances, Hole Number, Par and Shot
 - Scoring Screen - If you swipe down, then you will be able to enter your score for the hole. Swipe down again and it brings up the Green View screen.
 - Speaker Controls - If you are connected to a Rad speaker, then the Speaker Controls screen will show when you swipe up from the Home Screen.
 - If you are not connected to a Rad speaker, then this screen will not appear.
 - Hazard View - Swipe Down again to view the Hazard Screen. This shows any major hazards. Arrows indicate which direction the hazard is from the tee box.
 - A list of possible icons and their meaning is on the following page.
 - You can continue to swipe up or down to cycle through all screens.
 - Pressing the side button brings you back to the Home Screen.





HAZARD ICON LIST

- To the right is the list of possible hazards and their meaning.
- The 3 primary icons are for Bunkers, Water and the End of the Fairway.
- Arrows indicate which direction from the middle of the fairway that the hazard is located.
- Carry shows the distance needed to hit past the hazard.
- Front shows the distance to the beginning of the hazard.

HAZARD ICONS			
1. Left Fairway Bunker	LFB		
2. Middle Fairway Bunker	MFB		
3. Right Fairway Bunker	RFB		
4. Left Fairway Water	LFW		
5. Left Fairway Water Carry	LFWC		
6. Middle Fairway Water	MFW		
7. Middle Fairway Water Carry	MFWC		
8. Right Fairway Water	RFW		
9. Right Fairway Water Carry	RFWC		
10. Front Green Bunker	FGB		
11. Right Green Bunker	RGB		
12. Left Green Bunker	LGB		
13. Back Green Bunker	BGB		
14. Right Green Water	RGW		
15. Front Green Water Carry	FGWC		
16. Front Green Water	FGW		
17. Left Green Water	LGW		
18. Back Green Water	BGW		
19. Creek	CRK		
20. Creek Carry	CRKC		
21. End of Fairway	EOF		

CONTROLLING YOUR RAD SPEAKERS

- If you own a Rad Sound or Sound+ you are able to control it from your Rad Watch. Speaker control options include:
 - Volume Up
 - Volume Down
 - Rewind
 - Play/Pause
 - Fast Forward
 - Announce
 - By selecting announce, the front, center, and back distances from your watch will be played through your speaker.



ENTERING YOUR SCORE

- You are able to quickly save your score after each hole by swiping down from the Home Screen and choosing the correct number for shots taken.
- After you leave the green on the 1st hole, you should get a popup asking you to put in your score and then you will have the option to keep Score Prompt on or off. If you choose to leave it on, then the scoring screen will come up after you leave the green on every hole. If you choose no, then you will need to swipe down every time to get to the Scoring Screen to input your score.





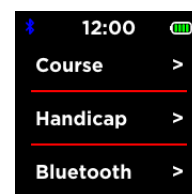
CHANGING HOLES

- The watch uses GPS to automatically go to the hole that you are on, however if you want or need to change holes then just swipe left or right from the Golf Home Screen.
- Scores entered on the watch for holes that you are not currently on will transfer to the Rad Golf application, so ensure that your watch is set to the hole you're on.

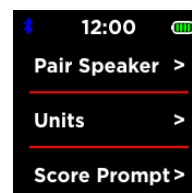


GOLF MENU

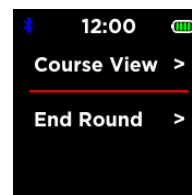
- Pressing the side button while in an active round of golf will pull up the Golf Menu. In the Golf menu you have multiple different options:
 - Course - Allows you to change your course.
 - Handicap - Allows you to change the handicap factor from Men to Women
 - Bluetooth - Allows you to turn Bluetooth On or Off
 - Pair Speaker - Will show a Green Checkmark if there is a connected speaker. If there is no speaker connected it will show an arrow and then instruct you to connect through the Rad App.
 - Units - Switch between Yards and Meters
 - Score Prompt - Turn score prompt on or off
 - Course View - Can switch between the Classic View or the Green View
 - End Round - Allows you to end the round.
 - If you are connected to your Rad App it will end the round on the app as well.



Golf Menu Page 1



Golf Menu Page 2

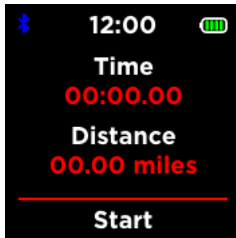


Golf Menu Page 3



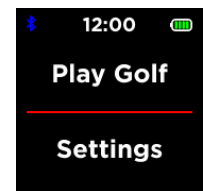
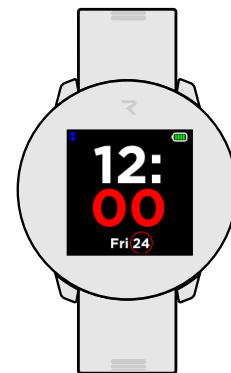
LET'S RUN

- Rad Watch allows you to track the distance for your walks, runs and rides.
- Swipe Up or Right from the main Home Screen to the Let's Run screen.
- The Watch will search for a GPS Location and then go to the Start screen.
 - Just like a regular stopwatch just hit Start, Stop and Reset as needed.
- To Exit your Run simply press the Side Button and it will ask if you want to Exit Run. Tap Yes to return the main Home Screen (Clock).
- NOTICE: This data is only for checking distance and time for your run, the data is not stored on your watch or in the Rad Golf mobile application.



MAIN WATCH SETTINGS

- Pressing the side button while in an active round of golf will pull up the Golf Menu. In the Golf menu you have multiple different options:
 - Battery - Shows current battery level
 - Bluetooth - Turns Bluetooth on or off
 - Units - Changes between Yards and Meters
 - Time - Allows you to set the clock
 - Tutorial - Pulls up a QR code to view this User Manual
 - Language - Allows you to change language displayed
 - Wake Screen - Allows you to select On/Off for motion-based screen wake



Press the side button from the clock screen to open this screen



- Updates - Allows you to check for Firmware and Course Updates
- Reset - Allows you to factory reset your device
- About - Displays the current firmware version, date of release, and ID of your watch.
- Serial - Displays the Watch Serial Number



UPDATING YOUR WATCH

- The first thing you need to do in order to update your watch is connect it to our Rad Mobile App.
- Make sure you download the App by scanning this QR code with your camera or clicking these links.
- Once you are in the Rad App you will need to connect your Rad Watch.
 - After you login to the app you are brought to the Home Screen which shows all available Rad Devices. Scroll down to find the Rad Watch and click Register & Connect.



- Once the Watch is connected you can click on the Device Menu button to open your Watch Settings.
- If pairing fails, you will see a message on your watch that reads "Pairing Failed" as well as a message on your mobile device that reads "Failed to Connect"



- From the Device Menu screen select the Settings icon
- From Settings choose Select for Updates button for Firmware or Courses as you need. This will tell the app to check to see if your device needs to be updated. If it does, then you can choose to update it. Once it is finished you will get a confirmation popup on the app.



RESETTING YOUR WATCH

- Selecting Rest Device in the Settings panel will restore your device to factory settings.
- Notice: If you factory reset your device, you will lose any stored rounds. Your device will still need to be unregistered from your Rad Golf application if you want somebody else to use the watch.



For more information contact us at:

support@radgolf.com
<https://radgolf.com/pages/faqs>

DOWNLOAD THE RAD APP

Make sure you download the App by scanning this QR code with your camera or clicking these links.

