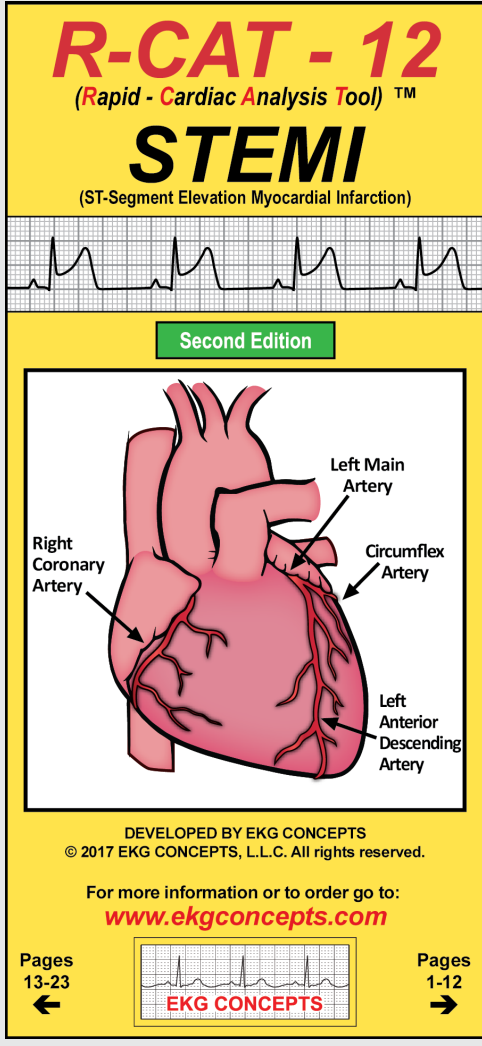


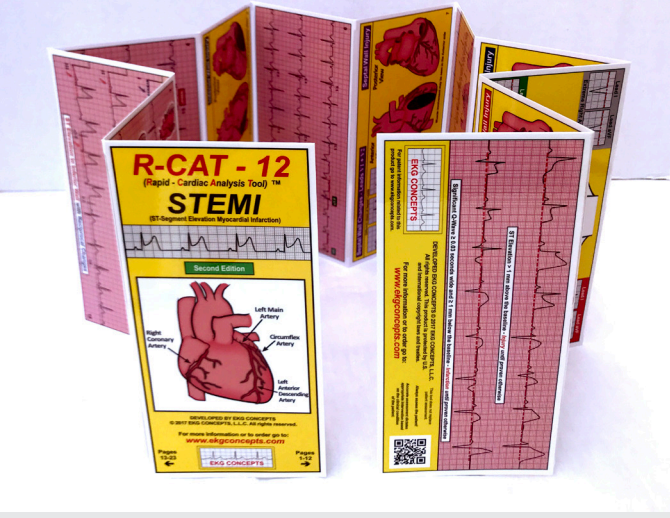
Pocket **R-CAT - 12** for STEMI

(Rapid - Cardiac Analysis Tool)

Second Edition



3.25 x 6.75 inches



Quickly refolds to pocket size

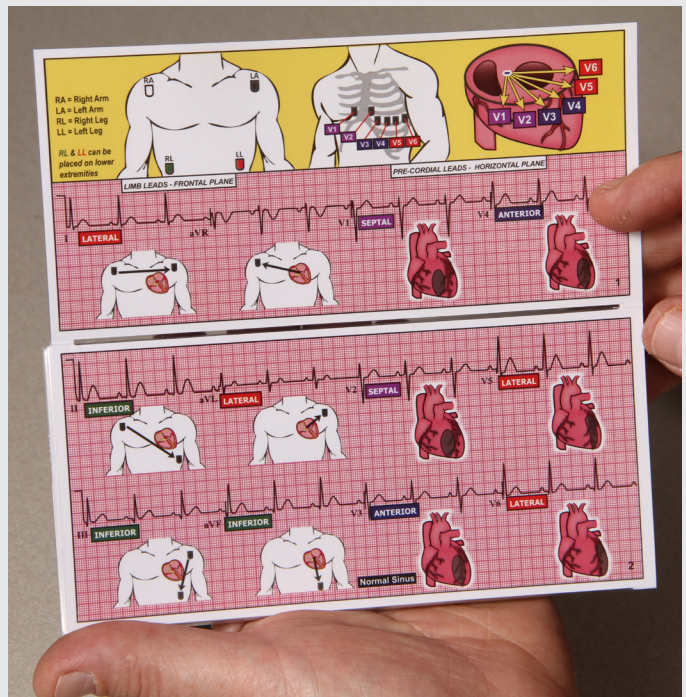
New added features!

- Right Bundle Branch Block
- Left Bundle Branch Block
- Cardiac Axis
- Reciprocal Changes

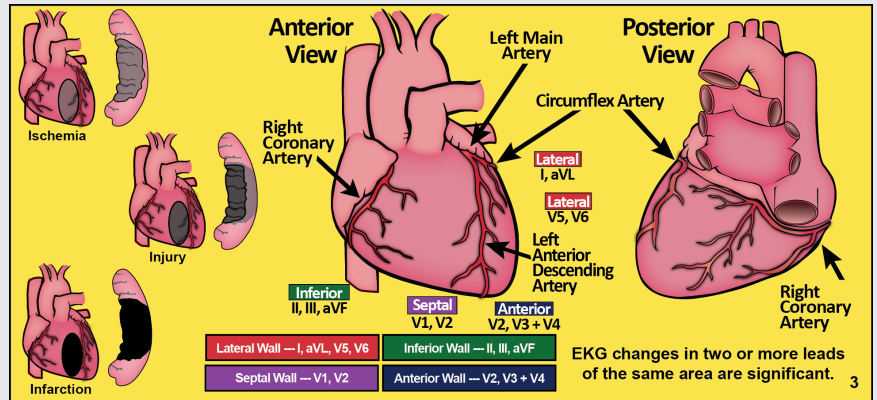
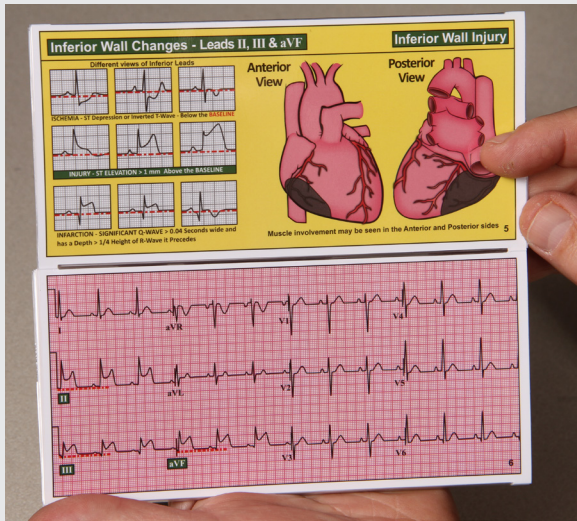


Medical personnel can save valuable time, initiate proper treatment, reduce critical errors, and improve patient outcomes by identifying 12 lead EKG changes associated with myocardial Ischemia, Injury and Infarction.

Your ability to quickly evaluate the characteristic alterations and ST changes is critical to initiating appropriate treatment and to obtaining the best outcomes for your cardiac patient.



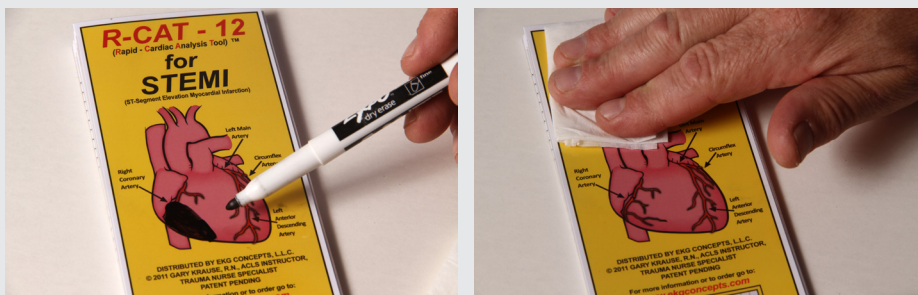
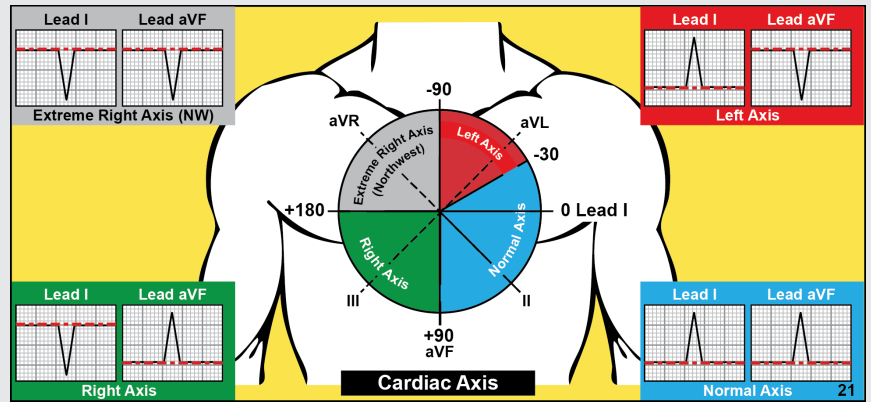
Proper placement and explanation of the limb and pre-cordial leads illustrated on a patient diagram.



This tool uses a novel, color-coded format to illustrate the classic EKG changes associated with myocardial damage on each of the heart surfaces.

Illustrates and explains:

- Inferior wall changes
- Septal wall changes
- Anterior wall changes
- Lateral wall changes
- Inferior-Posterior wall changes
- Reciprocal changes
- Right Bundle Branch Block
- Left Bundle Branch Block
- Cardiac Axis



The tool can be marked with a black dry erase marker and wiped clean for repeated use for staff and patient education.

From novice to expert the **pocket R-CAT - 12 for STEMI** makes an excellent investment as a reference or educational tool for any medical practitioner, who desires mastery in the interpretation of 12 lead EKGs.

The pocket **R-CAT - 12** for STEMI saves valuable time when every minute counts!



Proudly Made in the USA

Developed by EKG CONCEPTS © 2017 Patented

For more information or to order, please go to:

www.ekgconcepts.com

