



2024

Product Catalog

- Prism Reflectors for Total-Station
- Accessories for Laser Trackers
- Tribraches & Carriers
- Batteries, Cables, Chargers & Antennas
- Others

Prism Reflectors for Total-Station



**Leica
360
Prisms**

Page 1

**Other
360
Prisms**



Page 2

**Prism
Sets**

Page 4



**Single
Prisms**

Page 3



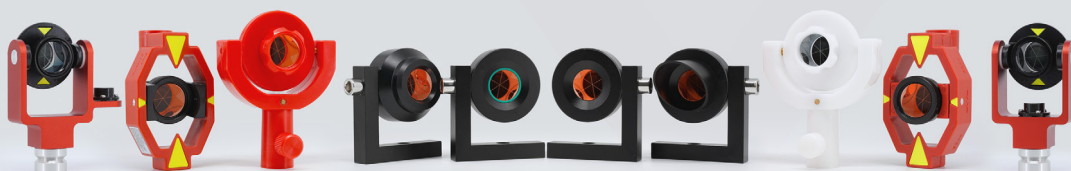
**Prism
Spheres**

Page 4



**Cat-Eye
Prisms**

Page 5



**Mini
Prisms**

Page 6

Accessories for Laser Tracker



**Spherically
Mounted
Retro-
Reflector**

Page 7

**Heavy
Load
Tripod**

Page 9



Tribraches & Carrier

**5/8"
Mounting**



Page 11

**SMR
Holders**



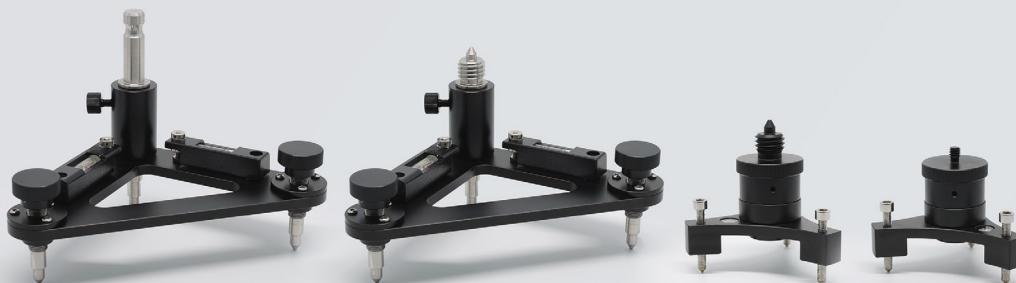
Page 8

**Leica
Mounting**



Page 10

**JEOC
Design**



Page 11

Electronic Accessories

Leica Batteries & Chargers

Page 12



Topcon Batteries & Chargers

Page 13



Trimble Batteries & Chargers

Page 14



Nikon Pentax Batteries & Chargers

Page 14



Cables

Page 12-14



Page 15

Others

Repair Parts, Reflective Tape, Beacon Light, etc.

Prism Reflectors for Total-Station

Leica 360 Degree Prisms

High Performance Prism

MPR122
Ultra Strong Structure
+28.1mm



298.00usd

GRZ122
Ultra Strong Structure
+28.1mm



298.00usd

JEOC MPR122 and GRZ122 come with extremely strong reinforcement support, planted inside the prism body. GRZ122 uses Leica spigot mount. MPR122 uses 5/8" thread mount. *

*GAD31 adapter will switch MPR122 to Leica mount, rising the prism center to 86mm.



48.00usd

Standard Prism

GRZ4
Standard Prism
+23.1mm



99.00usd

GRZ122C
5/8" Thread Top Mount
+24.1mm



109.00usd

GRZ4S
Dual Mounting
+23.1mm



133.00usd

GRZ4S comes with both Leica spigot mount and 5/8" thread mount

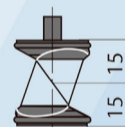
	Holder	Internal Bracket
GRZ4	Plastic	No
GRZ122C	Plastic	Yes
GRZ4S	Metal	No

Mini Prism

Choose a Prism and a Mounting Method to Form a Prism Set

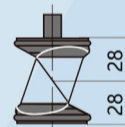
GRZ101

Offset: +30mm



GRZ101S

Offset: +29mm



Prism

GRZ101
+30mm

Original Design

89.00usd



Internal Support

+10.00usd



GRZ101S
+29mm

Original Design

89.00usd



Internal Support

+10.00usd



Mounting

Joint Poles

30cm *4



Telescopic Pole

350-1350mm



Mini Tribrach

Bubble Level



L-Bar

GMP104 Type



Prism Set



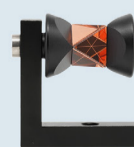
99.00usd



104.00usd



99.00usd



95.00usd

Prism Reflectors for Total-Station

Topcon 360 Degree Prisms

High Performance Prism

ATP1SII

Slide and Lock by Knot

+7mm



298.00usd

ATP2S

Slide and Lock with Button

+7mm



298.00usd

A7

With RC (or 5/8") Mount

+2mm



320.00usd

JEOC ATP1SII and ATP2S come with 6mm prism pole. They can stop at any height along the pole. JEOC A7 comes with RC mount or 5/8" thread mount.

Standard Prism

ATP1

Standard Prism

+7mm



129.00usd

ATP1Ex

ATP1 with Extra adapter

+7mm



137.00usd

ATP3

Using 1" Prism

0mm



148.30usd

ATP1 and ATP1Ex have got a thin internal bracket. ATP3 has a integrated prism holder, and bubble level.

Other 360 Degree Prisms

Trimble Prism

58128001

Standard Prism

+2mm



59.00usd

571204312

Mini Prism

+2mm



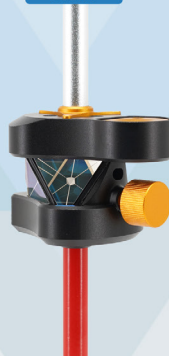
95.00usd

Myzox Prism

Zero220 Plus

Slide and lock with knot

0mm



298.00usd

Beacon Light

JBL

Using 18650 Li-ion Battery

Rechargeable



38.00usd



Prism Reflectors for Total-Station

Leica Single Prisms

Ultra Performance

GPH1P

Ultra Centering Accuracy

0mm



245.00usd

High Performance

GPR121R

High Accuracy

0mm



104.50usd

GPR121

High Accuracy

0mm



77.14usd

Monitoring Prism

GPR112

Plastic Prism Holder and Rain-hood

0mm



76.90usd

Standard

GPR1+GPH1

Standard Prism

0mm



33.94usd

GPR111

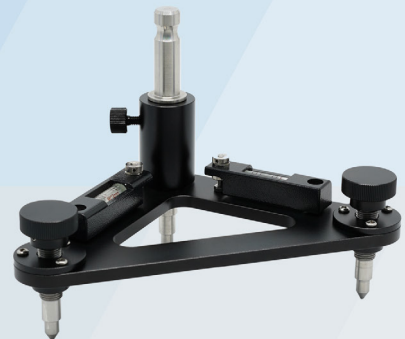
Plastic Prism Holder

0mm



33.94usd

All Leica Prisms (Except for GPR112) can be mounted on the accurate tribrach (Type JT2-L) with Leica Spigot



32.57usd

Topcon Single Prisms

AK11

Standard Prism

0/-30mm



24.42usd

AK12

Standard Prism

0/-30mm

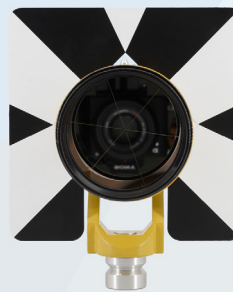


34.98usd

AK13

Standard Prism

0mm



34.65usd

All Prisms with 5/8" thread can be mounted on the accurate tribrach (Type JT2-T)



32.57usd

Other Single Prisms

58008024

Monitoring Prism

-44mm



47.80usd

AK14-N

Standard Prism

0/-30mm



25.42usd

AK14-P

Standard Prism

0/-30mm



25.42usd

Prism Reflectors for Total-Station

Leica Prism Sets

*2 Same Leica Prism Sets can form a Traverse Kit

Ultra Performance

GPH1P

GZR3 GDF321

0mm



845.00usd

High Performance

GPR121

GZR103 GDF321

0mm



268.32usd

GPR121R

GZR103 GDF321

0mm



295.68usd

Standard

GPR1

Regular Tribach Set

0mm



61.94usd

GPR111

Regular Tribach Set

0mm



61.94usd

Japanese Prism Sets

Topcon

AK11

-30/0mm



81.75usd

AK12

-30/0mm



67.75usd

AK13

0mm



67.42usd

Nikon

AK14-N

-30/0mm



51.75usd

Pentax

AK14-P

-30/0mm



49.75usd

Reflective Spheres

AK11

Copper Coated



95.48usd

AK11

Silver Coated



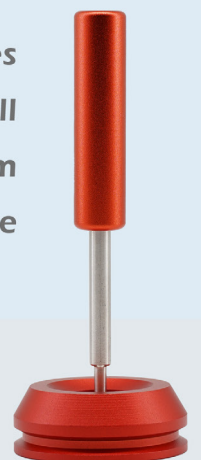
95.48usd

JEOC Reflective Spheres

Uses SUS-440C Stainless Steel Ball

The Centering Error is less than 0.5mm

Can be mounted on the magnetic base



34.11usd

Prism Reflectors for Total-Station

Road Monitoring Prisms (Cat Eye)

With Single Prism **25.98usd**

With Dual Prisms **29.98usd**

Prism Holder

Choose 1 from 4 Options Below

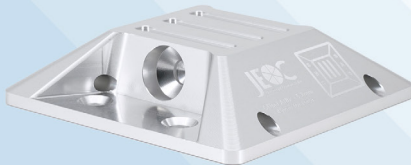
The angle between the prism axis and horizon varies
0°, 10°, 20°, 40° optional

- 2 Slots for Reflectors
- 4 Holes for Expansion Screws
- 1 Screw Hole for Embedded Rod
- 4 Side Drain Holes

0 Degree Holder



10 Degree Holder



20 Degree Holder



40 Degree Holder



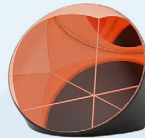
Reflector

Choose 1 from 4 Options Below

The corner cube varies in coating material
Silver coated and Copper coated optional

5Arcsec deviation
0.75" diameter

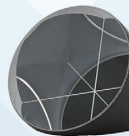
1* Copper Coated Prism



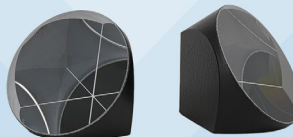
2* Copper Coated Prism



1* Silver Coated Prism



2* Silver Coated Prism



Installation

Choose 1 from 2 Options Below

The installation method varies
4 Expansion Screws or 1 Embedded Rod

4* Expansion Screws



1* Embedded Rod



Prism Reflectors for Total-Station

Leica Mini Prisms

High Performance

GMP101

Metal Holder/ Spigot Mount

+17.5mm



77.60usd

Standard

GMP111

Plastic Holder, 1/4" Thread Mount

+17.5mm



21.65usd

GMP111-0

0mm



21.65usd

Joint Poles

30mm *4



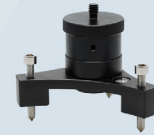
Telescopic Pole

350-1350mm



Mini Tribrach

Bubble Level



Other Mini Prisms

Universal

ADS102A

Central Bubble

-30/0mm



20.50usd

ADS102B

Side Bubble

-30/0mm



20.50usd

Trimble

Sining Prism

1.5inch Reflector

0mm



58.29usd

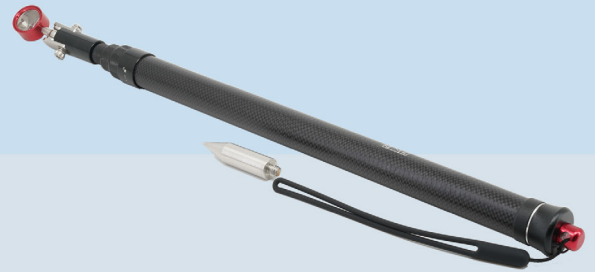
Myzox

J07-EX Prism

0.7inch Reflector

410-1020mm telescopic pole

0/+14.5mm

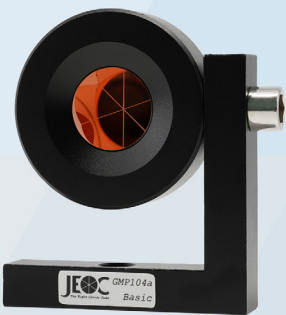


59.98usd

Mini Monitoring Prism

GMP104

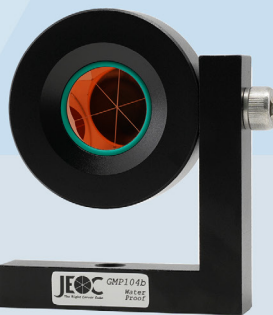
Regular Type



14.30usd

GMP104B

Water Proof



15.30usd

GMP104C

Rain Proof



18.90usd

GMP104D

Dual Reflector



28.60usd

GMP104L

215mm Long Bar



16.30usd

Accessories for Laser Trackers

SMR (Spherically Mounted Retro-Reflector)

Optical Glass Sphere

- ❁ **K9 Optical Reflector Set**
3 Pieces lenses combination
- ❁ **Multi-Layer Coating**
Reflective coating and protective coating
- ❁ **Hardened Steel Sphere Body**
SUS-440C Stainless steel
- ❁ **Protective Ring with Wide Entry**
- ❁ **Various Size**
1.5" and 0.5" Spheres on Shelf
- ❁ **Compatible with All OEM Laser-Tracker**

JEOC RSL1	1.5inch	Range >55m	Better Than ± 0.0003 inch (0.008mm)
-----------	---------	------------	---

JEOC RSL2	0.5inch	Range >30m	Better Than ± 0.0003 inch (0.008mm)
-----------	---------	------------	---



RSL1

1.5" Reflective Sphere

439.00usd



RSL2


0.5" Reflective Sphere


439.00usd


Accessories for Laser Trackers

SMR Holders

Holder Type (B) Shank Holder (SH)			
SMR Type (A)	Offset (C)	Shank Diameter (D)	Type
0.5" SMR (0.5)	10mm	5mm	0.5SH-10mm-5mm
		6mm	0.5SH-10mm-6mm
		8mm	0.5SH-10mm-8mm
		10mm	0.5SH-10mm-10mm
		12mm	0.5SH-10mm-12mm
	0.5"	0.25"	0.5SH-0.5"-0.25"
	12mm	6mm	0.5SH-12mm-6mm
8mm		0.5SH-12mm-8mm	
12mm		0.5SH-12mm-10mm	
1.5" SMR (1.5)	24mm	6mm	1.5SH-24mm-6mm
		8mm	1.5SH-24mm-8mm
		12mm	1.5SH-24mm-12mm
	25mm	6mm	1.5SH-25mm-6mm
		8mm	1.5SH-25mm-8mm
		10mm	1.5SH-25mm-10mm
		12mm	1.5SH-25mm-12mm
	1"	0.25"	1.5SH-1"-0.25"

Holder Type (B) Shankless Holder (H)			
SMR Type (A)	Offset (C)	Type	
0.5" SMR (0.5)	10mm	0.5H-10mm	
	12mm	0.5H-12mm	
	0.5"	0.5H-0.5"	
1.5" SMR (1.5)	24mm	1.5H-24mm	
	25mm	1.5H-25mm	
	1"	1.5H-1"	

Holder Type (B) Drift Nest (DN)			
SMR Type (A)	Offset (C)	Type	
0.5" SMR (0.5)	0.5"	0.5DN-0.5"	
1.5" SMR (1.5)	1.0"	1.5DN-1"	

Holder Type (B) Edge Holder (EH)			
SMR Type (A)	Offset (C)	Type	
0.5" SMR (0.5)	12mm	0.5EH-12mm	
	0.5"	0.5EH-0.5"	
1.5" SMR (1.5)	24mm	1.5EH-24mm	
	25mm	1.5EH-25mm	
	1"	1.5EH-1"	

SMR Holder Naming Rules

(A*)(B*)-(C*)-(D*)

SMR Type (A)
1.5" (1.5) or 0.5" (0.5)

Holder Type (B)

Shank Holder (SH), Shankless Holder (H), Drift Nest (DN), Edge Holder (EH)

Offset (C) Shank Diameter (D)
Written in Metric or Imperial Units, left blank if not available

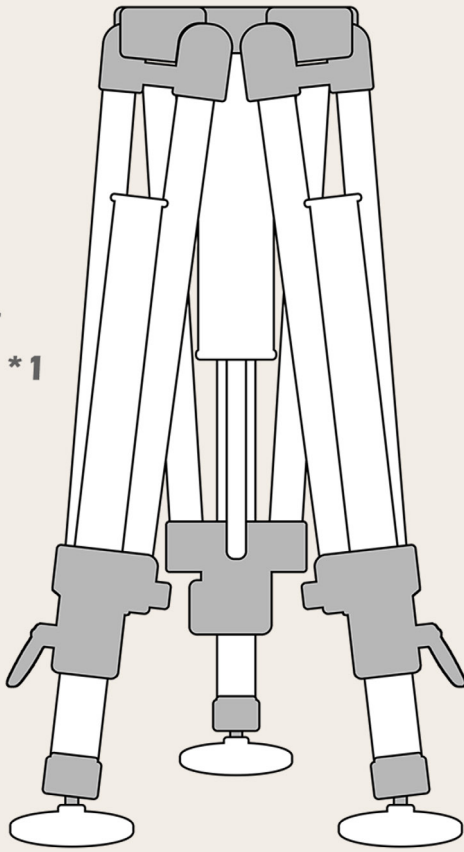
For example
0.5SH-10mm-6mm
refers to a Shank holder for 0.5" SMR,
with 10mm offset and the diameter of the Shank is 6mm

Accessories for Laser Trackers

Heavy Load Tripod

Main Structure

JEOC HLT
Tripod Body * 1



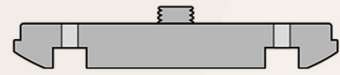
Mounting

(Choose 1 of 2)

3-1/2-8 UNC-2A

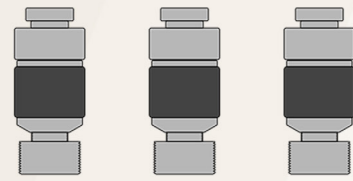


5/8"-11 UNC-2A



Leveling Kit

(Optional)



Height Kits

(Choose 1 of 4)

9cm Standard Column

9cm Column * 1



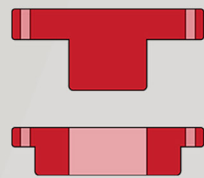
80cm High Expansion

(A quick release low mount is included)

80cm Column * 1



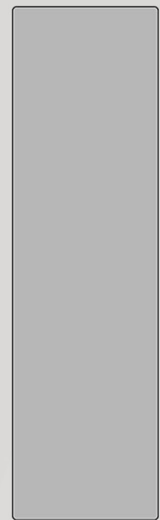
Quick Release
Adapter



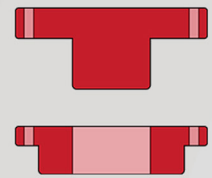
40cm High Expansion

(A quick release low mount is included)

40cm Column * 1



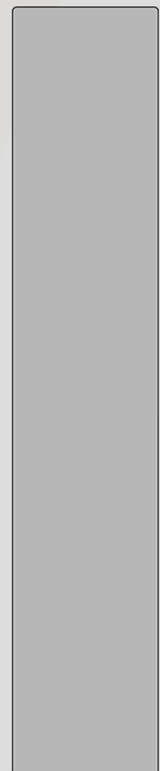
Quick Release
Adapter



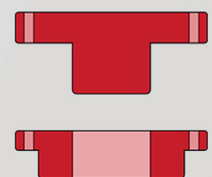
60cm High Expansion

(A quick release low mount is included)

60cm Column * 1



Quick Release
Adapter



Tribraches and Adapters

Leica Tribraches

With Optical Plummet

GDF112

Eco



52.59usd

GDF122

Standard



72.78usd

GDF312

Standard



67.71usd

GDF322

Accurate



67.71usd

Without Optical Plummet

GDF111-1

Eco



33.94usd

GDF121

Standard



47.50usd

GDF311

Standard



50.57usd

GDF321

Accurate



50.57usd

Leica Carriers

JZR-103

Standard



35.49usd

GRT-144

Standard



45.00usd

GZR103

Accurate



155.76usd

GZR3

Ultra Accurate



523.80usd

Tribraches and Adapters

Japanese Tribraches

Without Optical Plummet

JT-1Y

Economical Replica

Yellow



22.78usd

JT-1G

Economical Replica

Gray



22.78usd

JT-1B

Economical Replica

Black



22.78usd

8S8121

Accurate

Yellow



72.93usd

With Optical Plummet

8S8121

Accurate

Yellow



94.85usd

JA-1

Also in Gray, Black

Yellow



28.75usd

Japanese Carriers

With Optical Plummet

Trimble Tribrach and Adapter

58002007

Accurate

Black



97.71usd

58002007

Accurate, Plummet Removed

Black



58.29usd

58002007 + 7860800

Plummet on Carrier

Black

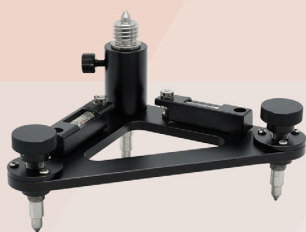


113.14usd

JEOC Tribraches

JT-2T

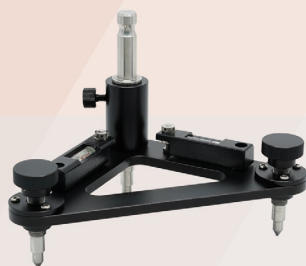
5/8" Thread Mount



32.57usd

JT-2L

Leica Spigot Mount



32.57usd

JT-2S

Spherical Mount



32.57usd

JT-3T

5/8" Thread Mount



22.29usd

JT-3L

1/4" Thread Mount



22.29usd

Electronic Accessories

Leica Batteries

GEB77
12V 12wh
Ni-MH



48.46usd

GEB111
6V 12.6wh
Ni-MH



55.38usd

GEB121
6V 25.2wh
Ni-MH



78.46usd

GEB187
12V 25.2wh
Ni-MH



53.08usd

GEB211
7.4V 16.28wh
Li-ion



36.92usd

GEB212
7.4V 19.24wh
Li-ion



36.92usd

GEB221
7.4V 32.56wh
Li-ion



41.54usd

GEB222
7.4V 44.4wh
Li-ion



46.15usd

GEB242
14.8V 85.84wh
Li-ion



92.31usd

GEB171
12V 120.0wh
Ni-MH



147.69usd

GEB371
14.8V 248.64wh
Li-ion



318.46usd

Leica Chargers

GKL22
Output: 16.0V DC
0.9A/1.8A

GEB70 GEB77
GEB171 GEB187

GKL112
Output: 9.0V DC
1.5A

GEB111 GEB121

GKL211
Output: 8.4V DC
1.6A

GEB90 GEB211
GEB212 GEB221
GEB222 GEB241

GKL221
Output: 18.5V DC
1.0A

GEB242

GKL311
Output: 18.0V DC
2.0A

GEB211 GEB212
GEB221 GEB222
GEB241 GEB242
GEB331

GKL341
4 Slots
Support GDC221 and GEV223

GEB211 GEB212
GEB221 GEB222
GEB241 GEB242
GEB331

GKL221 Pro 5000
Output: 24.0V DC/ 2.5A
18.0V DC/ 4.0A

Dock GDI221 Dock GDI222
GEB211 GEB212 GEB70 GEB79
GEB221 GEB222 GEB87 GEB187
GEB241 GEB242 GEB111 GEB121
GEB90 GEB171 GEB371

Leica Cables

GEV52
409678

GEV58
409684

GEV97
560130

GEV102
563625

GEV108
632390

GEV114
636805

GEV120
563959

GEV125
A00705

GEV128
758468

GEV142
667201

GEV160
733280

GEV162
733282

GEV163
733283

GEV167
733288

GEV179
731353

GEV186
734697

GEV187
734698

GEV189
734700

GEV195
734755

GEV215
756365

GEV219
758469

GEV220
759257

GEV223
764700

GEV237
772807

GEV238
772002

GEV267
806093

GEV269
806095

GEV274
A00701

AND
MORE...

Electronic Accessories

Topcon Batteries

BT-50Q
7.2V 19.44wh
Ni-MH



92.31usd

BT-65Q
7.4V 37wh
Li-ion



42.69usd

BT-66Q
7.4V 19.0wh
Li-ion



36.92usd

BT-32Q
7.2V 10.08wh
Ni-Cd



69.23usd

BT-77Q
7.4V 22.0wh
Li-ion



64.62usd

BT-30Q
7.4V 37wh
Li-ion



37.50usd

BT-52QA
7.2V 19.44wh
Ni-MH



69.23usd

BDC-25B
6.0V 9.6wh
Ni-MH



92.31usd

BDC-35A
6.0V 16.2wh
Ni-MH



99.23usd

BDC-46C
7.2V 18.0wh
Li-ion



27.69usd

BDC-58
7.2V 36.0wh
Li-ion



42.69usd

BDC-70
7.2V 38wh
Li-ion



42.69usd

BDC-71
7.2V 21.54wh
Li-ion



36.92usd

BDC-72
7.2V 43.09wh
Li-ion



48.46usd

Topcon Chargers

BC-19B
Output: 9.0V DC
1.8A

BT-32Q

BC-20CR
Output: 9.0V DC
1.8A

BT-30Q BT-24Q

BC-27CR
Output: 9.0V DC
1.8A

BT-50Q BT-52QA

BC-30
Output: 4.2V DC 1.6A
8.4V DC 0.8A

BT-61Q BT-65Q
BT-66Q

BC-30D
Output: 7.2V DC 1.2A
Dual Slots

BT-61Q BT-62Q
BT-65Q BT-66Q

Topcon Cables

FC-24
PDA

FC-24
COM

FC-24
USB

DOC27
PDA

DOC27
COM

DOC27
USB

DOC27Y
Multi-Func.

DEC117
Power Adapter

EDC121Y
Multi-Func.

DOC129
PDA

DOC129
COM

DOC129
USB

DOC133S
COM

EDC212
Multi-Func.

DOC210
PDA

DOC210
USB

DOC210
COM

AND
MORE...

Electronic Accessories

Trimble Batteries

79400
10.8V 70wh
Li-ion



145.35usd

TSC2
3.8V 25wh
Li-ion



133.85usd

Recon
2.4V 9.6wh
Ni-MH



106.15usd

TSC3
11.1V 27.8wh
Li-ion



133.85usd

Nivo
3.6V 24.12wh
Li-ion



48.46usd

76767
3.7V 27.4wh
Li-ion



156.92usd

54344
7.4V 19.2wh
Li-ion



23.08usd

M3
7.2V 27.36wh
Li-ion



87.69usd

Trimble Chargers

53018010
Output: 19.0V DC
5.0A

79400 76767
54344 92600

TSC3
Output: 15.0V DC
1.0A

TSC3

TSC2/Recon
Output: 5.0V DC
2.0A

TSC2 Recon

BC-30
Output: 4.2V DC 1.6A
8.4V DC 0.8A

M3

BC-30D
Output: 7.2V DC 1.2A
Dual Slots

M3

Trimble Cables

22720
Antenna

32345
COM

32960
COM

31288-02
GPS

46125-20
Power

30945
Multi-Func.

58957
Antenna

60789-00
Multi-Func.

53002021
Multi-Func.

59043
COM

DINI12
COM

73840018
USB

AND
MORE...

Nikon & Pentax Batteries

BC-65
4.8V 18.24wh
Ni-MH

BC-65
6.0V 22.8wh
Ni-MH

BC-65
7.2V 27.36wh
Ni-MH

BC-80
7.2V 27.36wh
Ni-MH

BP-01
7.2V 17.28wh
Li-ion

BP-02C
6.0V 24.00wh
Ni-MH

BP-04
7.4V 32.56wh
Li-ion

Nikon & Pentax Chargers

Q-75E
Output: 9.0V DC
1.6A

BC-50 BC-60
BC-65 BC-70
BC-80

STD-C03
Output: 7.5V DC
1.6A

BP-02C

BC-04
Output: 8.4V DC
2.0A

BP-04

10038
Output: 8.4V DC
0.8A

10002

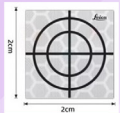
Reflective Tapes

JEOC Design

Better Reflective Material
Segmented Design, Thinner Central Cross

JZM2

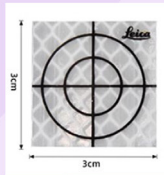
20*20mm



3.5usd/20pcs

JZM3

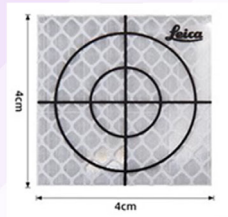
30*30mm



4.8usd/20pcs

JZM4

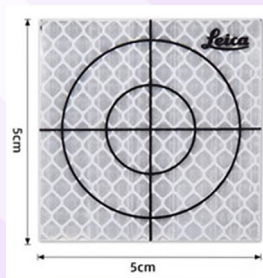
40*40mm



6.5usd/20pcs

JZM5

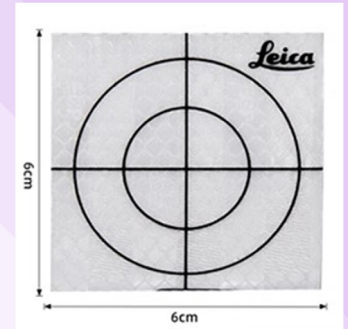
50*50mm



9.0usd/20pcs

JZM6

60*60mm



12.0usd/20pcs

Reflective Taps on Magnetic Base

RT3-0

Horizontal



36.80usd

RT3-45

45 Degree



38.40usd

RT3-90

Vertical



38.40usd

RBC

Centering

33.00usd





JEOC

Designs and manufactures accurate reflectors since 2002

**Please contact us if you need
related products those are not listed.**

www.jeoc.com.cn

info@jeoc.com.cn