



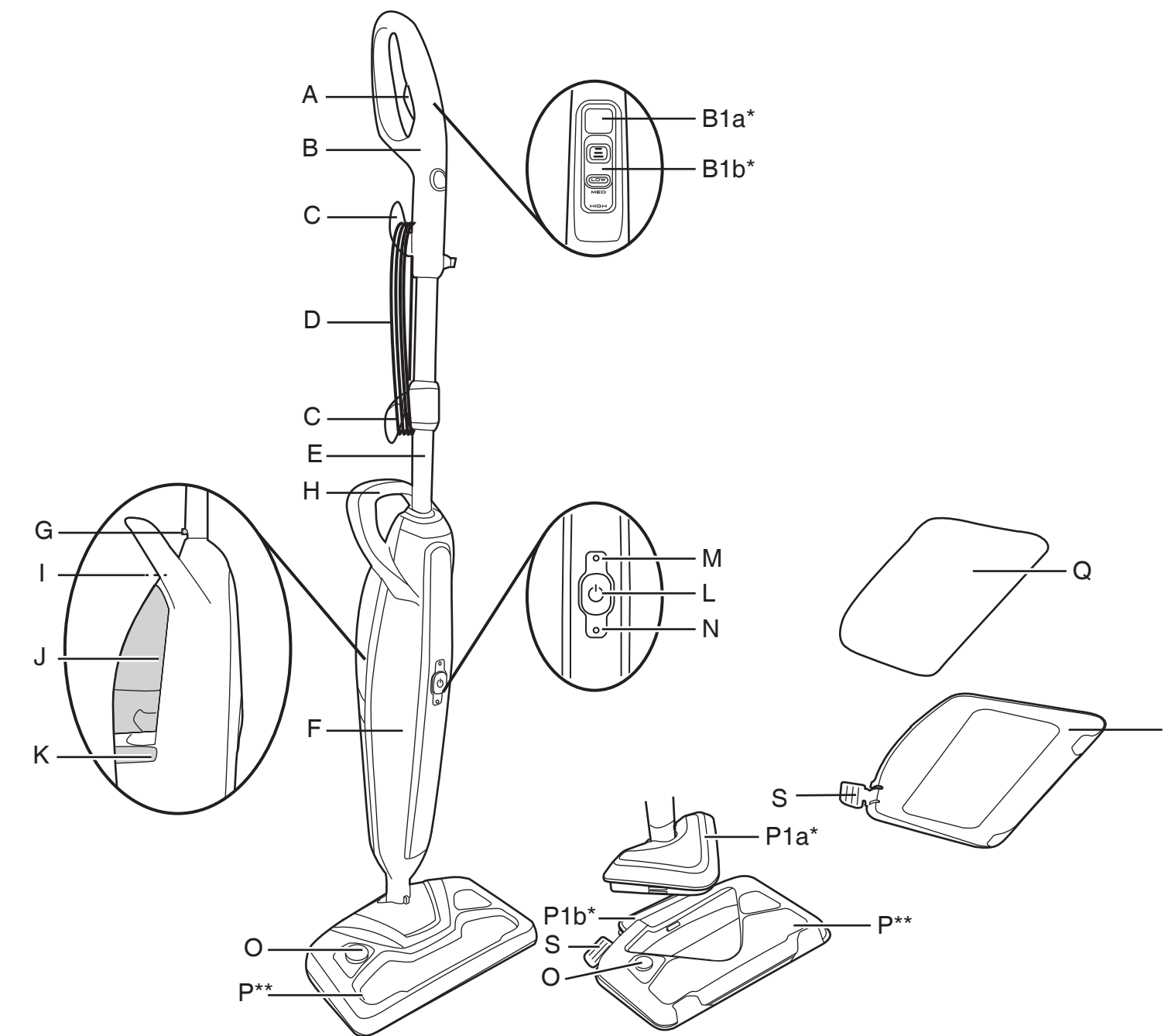
# HOOVER



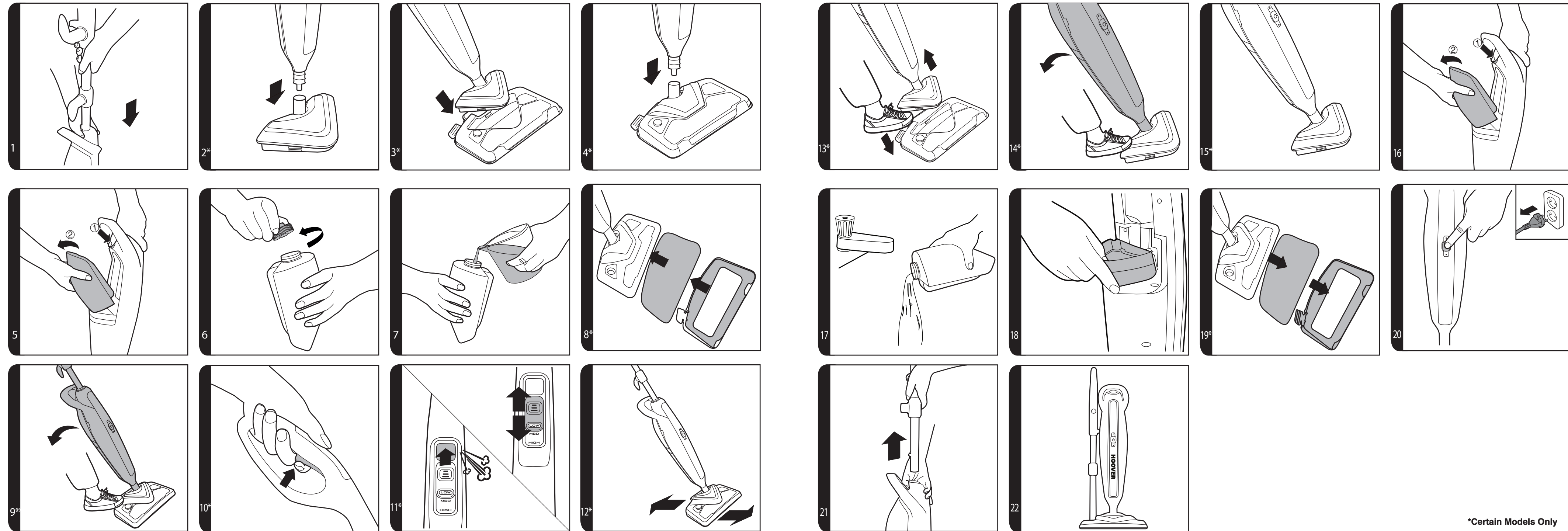
PRINTED IN P.R.C.  
48030389



USER MANUAL



\*Certain Models Only    \*\*Nozzle design may vary according to models



## INSTRUCTIONS FOR SAFE USE

This appliance should only be used for domestic cleaning, as described in this user guide. Please ensure that this guide is fully understood before operating the appliance.

Do not leave the appliance plugged in. Always switch off and remove the plug from the socket after use, or before cleaning the appliance or any maintenance task.

This appliance can be used by persons with reduced physical, sensory or mental capabilities or lack of experience and knowledge if they have been given supervision or instruction concerning use of the appliance in a safe way and understand the hazards involved. Children shall not play with the appliance.

Keep the appliance out of reach of children when it is energized or cooling down.

The appliance is not to be used if it has been dropped, if there are visible signs of damage or if it is leaking.

If the power cord is damaged stop using the appliance immediately. To avoid a safety hazard, an authorised Hoover service engineer must replace the power cord.

This appliance must be earthed.

The appliance shall not be left unattended while it is connected to the supply mains.

Do not use your appliance out of doors.

Use only attachments, consumables or spares recommended or supplied by Hoover.

Do not use the appliance to clean or direct steam towards animals, people or plants.

Liquid or steam must not be directed towards equipment containing electrical components, such as the interior of ovens.

The filling aperture must not be opened during use.

Unplug the cleaner and switch off before filling the water container. Do not over-fill the container. Replace the filling cap.



Danger of Scalding.



Surfaces are liable to get very hot during use. Avoid contact with steam.

Do not stand on or wrap the cord around arms or legs when using your appliance.

Do not position the appliance above you when cleaning the stairs.

When using the cleaning tools ensure to always steady the appliance with your other hand. This will ensure that the appliance does not fall while in use.

Do not handle the plug or appliance with wet hands.

Do not run over the power cord when using your appliance or remove the plug by pulling on the power cord.

Do not continue to use your appliance if it appears faulty.

**Hoover service:** To ensure the continued safe and efficient operation of this appliance we recommend that any servicing or repairs are only carried out by an authorised Hoover service engineer.

Do not immerse the appliance in water or other liquids.

Do not use detergents or liquids other than water inside the appliance.

**For UK and Ireland only:** This appliance has a 13 amp mains plug. If you need to change the fuse in the mains plug, use a 13amp ASTA (BS1362) fuse.

### The Environment

The symbol on this appliance indicates that this appliance may not be treated as household waste. Instead it must be handed over to the applicable collection point for the recycling of electrical and electronic equipment. Disposal must be carried out in accordance with local environmental regulations for waste disposal. For more detailed information about treatment, recovery and recycling of this appliance, please contact your local city office, your household and waste disposal service or the shop where you purchased the appliance.



This appliance complies with the European Directives 2014/35/EU, 2014/30/EU and 2011/65/EU.

CANDY HOOVER GROUP Srl Via Privata Eden Fumagalli, 20861 Brugherio (MB) Italy

## GETTING TO KNOW YOUR CLEANER

- A. Steam Release Trigger \*
- B. Handle Assembly
- B1a. Steam Boost Button\*
- B1b. Variable Steam Release Control Slider High, Medium & Low \*
- C. Upper & Lower Cord Storage Hooks
- D. Power Cord
- E. Metal Tube
- F. Cleaner Main Body
- G. Handle Release Button
- H. Cleaner Carry Handle
- I. Clean Water Tank Release Latch
- J. Clean Water Tank
- K. Hard Water Filter
- L. Power On /Off Button
- M. Power On Indicator Light (Red )
- N. Steam Ready Light ( Green )
- O. Handle Storage Location
- P. Floor Head\*\*
- P1a. Triangular Brush\*
- P1b. Triangular Brush Release Pedal \*
- Q. Textile Pads
- R. Carpet Glider
- S. Glider release pedal

## ASSEMBLING YOUR CLEANER

Remove all components from the packaging.

1. Insert the Handle Assembly pole into the Cleaner Main body until it locks into position. [1]
2. Assemble the main body of the cleaner to the Triangular Brush\*. [2]
3. Assemble the main body of the cleaner to the floor Head and assemble the Triangular Brush into the Floor Head.\* [3]

## USING YOUR CLEANER

### BEFORE YOU BEGIN CLEANING

1. Release the clean water tank by sliding the water release button upwards and remove tank from cleaner main body. [5]
2. Twist the cap anti clockwise and remove. [6]
3. Fill the clean water tank with cold tap water. Replace cap. [7] Do not add any chemicals, detergents or perfumes to the clean water tank.

\*Certain Models Only \*\*Nozzle design may vary according to models

4. Re-fit the clean water tank to the cleaner ensuring the hard water filter is in place.
5. Attach a textile pad to the base of the floor Head. [8]

**IMPORTANT: Always unplug the cleaner when adding water or changing a textile pad.**

**NOTE: Wash the textile pad prior to use to remove any lint.**

### STEAM CLEANING HARD FLOORS

**NOTE: Always sweep or vacuum the floor prior to use to remove any loose dirt or debris.**

**IMPORTANT: Do not use the cleaner without a textile pad attached to the floor head.**

**NOTE:** Do not use the carpet glider when cleaning hard floors.

1. Plug the steam cleaner into the main power. The red ON light will illuminate.
2. After a few seconds the green Steam Ready light will illuminate indicating the cleaner is ready for use.
3. Recline the cleaner by placing a foot on the floor head and lowering the main body towards the floor. [9]
4. To produce steam press the Steam Release Trigger. [10]\*
5. Move the cleaner slowly backwards and forwards paying particular attention to high traffic areas. [12]
6. For certain models to produce steam , just select your cleaning setting on the Slider control located on the handle. Low, Medium or High depending on your specific cleaning requirement and recline the cleaner. [11]\*
7. On Certain model the cleaner is equipped with a steam boost button located on the Handle. This allow the user to apply extra cleaning power for 10 seconds to help to remove stubborn marks. [11]\*

### Steam cleaning hard floor - intensive clean

Use the triangular floor brush\* for hard floors that require deep cleaning. Please note that there is no mop and the area will have to be dried separately.

**NOTE:** Always sweep or vacuum the floor prior to use to remove any loose dirt or debris.

1. Remove the triangular floor brush\* from the floor head by pressing the release pedal at the rear of the floor head. [13]
2. Plug the steam cleaner into the main power. The red ON light will illuminate. After a few seconds the green Steam Ready light will illuminate indicating the cleaner is ready for use.
3. Recline the cleaner by placing a foot on the floor brush and lowering the main body towards the floor. [14]
4. To produce steam press the trigger release control. [10]\*
5. For certain models to produce steam, just select your cleaning setting on the Slider control located on the handle. Min, Medium or High depending on your specific cleaning requirement and recline the cleaner. [11]\*
6. On Certain model the cleaner is equipped with a steam boost button located on the handle. This allow the user to apply extra cleaning power for 10 seconds to help to remove stubborn marks. [11]\*

## CLEANER MAINTENANCE

**IMPORTANT: ALWAYS ENSURE THE CLEANER HAS FULLY COOLED DOWN BEFORE PERFORMING ANY MAINTENANCE TASKS.**

### Emptying the water tank

1. Unplug the cleaner from the main power and ensure the unit has cooled.
2. Remove the clean water tank for the main body of the cleaner. [5]
3. Twist the cap anti-clockwise and remove. [6]
4. Empty any excess water from the tank. [17] Replace the cap and refit the water tank into the cleaner.

### Removing and cleaning the textile pad

1. Unplug the cleaner from the main power and ensure the unit has cooled.
2. If necessary remove the carpet glider, then peel the textile pad from the floor base. [19]
3. Wash the textile pad in a washing machine with a mild detergent at max temperature 40°C.

**IMPORTANT:** Do not use bleach or fabric softener when washing the textile pad.

### Replacing the hard water filter

The cleaner is fitted with a hard water filter. If you live in an area with hard water the filter will discolour over time. Depending on the water hardness and frequency of use the filter should be changed every 6 months.

1. Unplug the cleaner from the main power and ensure the unit has cooled.
2. Remove the clean water tank for the main body of the cleaner. [16]
3. Lift the hard water filter out of the cleaner. [18] Replace with new filter.
4. Reassemble the clean water tank to your cleaner.

**Note:** The condition of the filter will affect the cleaner performance.

### Handle storage

1. Unplug the cleaner from the main power and ensure the unit has cooled. [20]
2. Remove the handle. [21]
3. Engage the handle storage locking hook into the storage slot on the side of the cleaner main body and locate the end of the handle into the location hole on the floor head. [22]

## TROUBLESHOOTING

Should you have a problem with the product, complete this simple user checklist before calling your local Hoover service.

The steam stick will not switch on.

- Check the unit is plugged in.
- Check the power cord.

The steam stick is not producing steam.

- There may be no water in the clean water tank.
- The tank may not be fitted correctly.

The textile pad won't pick up dirt.

- The cleaning pad may already be saturated with dirt and needs to be washed. Refer to the Maintenance section.

## CLEANING FAQs

**When is Capsule ready?** In approximately 30 seconds.

**Can I use Capsule on all floor surfaces?** On all hard floors like marble ceramic, stone, linoleum and sealed hardwood & Parquet floors. Care should be taken when using Triangular brush on certain floor coverings.

**Does Capsule emit steam automatically?** Yes on certain models, you can recline the cleaner and the steam will emit automatically. On other models you should press the steam/sweep trigger button.

**Can I use it vertically?** No, Capsule can be used only on horizontal floor surfaces.

**Can I put detergents or other chemicals inside the tank?** No, you would damage the product.

**What if in the city where I live the water is very hard?** Filtered water can be used or you must replace your filter on a more regular basis.

**When is it time to change the filter cassette? How do you notice it?** It depends on the water hardness. Normally 6 months. You will notice that the colour of resin inside the filter cassette becoming more darker.

**How long will one tank of water last before needing to be refilled?** Approximately 20 minutes if you continuously press the trigger.

**Is the mop washable?** Yes, it can be washed by hand or in the washing machine with a mild detergent at max temperature 40°C. Do not use bleach or fabric softener.

**How often should I replace the mop?** It depends on different factors above all how hard the floor is. The best way to understand when to change the mop is when the mop is still dirty after having washed it or if you notice that it doesn't perform like before.



## IMPORTANT INFORMATION

### **Hoover spares and Consumables**

Always replace parts with genuine Hoover spares. These are available from your local Hoover dealer or direct from Hoover. When ordering parts always quote your model number.

### **Hoover Service**

Should you require service at any time, please contact your local Hoover Service Office.

### **Quality**

Hoover's factories have been independently assessed for quality. Our products are made using a quality system which meets the requirements of ISO 9001.

### **Your Guarantee**

The guarantee conditions for this appliance are as defined by our representative in the country in which it is sold. Details regarding these conditions can be obtained from the dealer from whom the appliance was purchased. The bill of sale or receipt must be produced when making any claim under the terms of this guarantee.

Subject to change without notice.