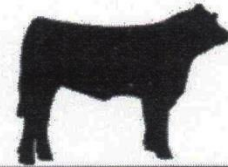


LIGHT HILL

• MEATS •



Customer Cut Form - BEEF

Please send completed forms to Tammy@lighthillmeats.com

Arrival Date:	Cut:	Tag#	¼	½	Whole
Owner:	Live Wt.:		Hang Wt.:		
Phone#	Customer:				
Species/Desc.:	Phone#				
Please circle how you would prefer to be contacted? Telephone – Email – Text		Email:			

Option 1

Standard cuts with Bone-In steaks.
2 Steaks per pack

2 lb. Ground beef Chub bags
Roasts: 2-3 lbs. each
Chuck
Shoulder
Sirloin Tip
Rump
Bone-In Steaks: 1 inch thick
T-Bone
Porterhouse
Rib Steak
Sirloin
Brisket: Cut in half
Cubed Steaks: 4 per pack
Approx.: 8 to 10 packs
Stew Meat: 1 lb. packs
Approx.: 5 packs total
Skirt and Flank Steaks

I Select this Option

Option 2

Standard cuts with Boneless Steaks
2 Steaks per pack

2 lb. Ground beef Chub bags
Roasts: 2-3 lbs. each
Chuck
Shoulder
Sirloin Tip
Rump
Boneless Steaks: 1 inch thick
New York Strip
Filet
Ribeye
Sirloin
Brisket: Cut in half
Cubed Steaks: 4 per pack
Approx.: 8 to 10 packs
Stew Meat: 1 lb. packs
Approx.: 5 packs total
Skirt and Flank Steaks
Back Ribs

I Select this Option

Custom Processing - \$1.13 per pound on the hanging weight, \$65 kill fee, and a \$15 disposal fee. Any item from the chosen option that you do not need, cross it out. It will be ground up into burger. Anything extra that is not listed (may have an additional cost) write it out to the side.

USDA Processing - \$1.43 per pound on the hanging weight, \$80 kill fee, and a \$15 disposal fee. Any item from the chosen option that you do not need, cross it out. It will be ground up into burger. Anything extra that is not listed (may have an additional cost) write it out to the side.

Light Hill Meats Custom Processing - 3851 Cornersville Rd. Lynnville, TN 38472 - 931-527-3198

**Due to our high processing volume, any additional requested cuts outside of the options listed are not guaranteed to accompany the order.