

The MTX logo is displayed in white, bold, italicized letters on a red rectangular background in the top right corner of the page.

[WWW.MTXPARTS.COM](http://WWW.MTXPARTS.COM)



**HIGH PERFORMANCE**

**PARTS & ACCESSORIES**

**PRODUCT CATALOG 2022**

# CONTENTS.

<b>ABOUT US</b>	<b>4</b>	<b>FILTERS</b>	
<b>SPONSORSHIP</b>	<b>6</b>	Foam Air Filters	<b>14</b>
<b>SPROCKETS</b>		OE Air Filters	
Zero Rear Sprockets	<b>8</b>	Oil Filters	<b>15</b>
Raptor Rear Sprockets		<b>MISCELLANEOUS</b>	
Hornet Front & Rear Sprockets	<b>9</b>	Motorcycle Rim	<b>16</b>
Steel Front & Rear Sprockets		Foot Rests	<b>17</b>
<b>CHAINS</b>		Throttle Tubes	<b>18</b>
Orbit - X Chain	<b>10</b>	Motorcycle Grips	<b>19</b>
Orbit - O Chain		Cables	<b>20</b>
Orbit - HD Chain	<b>11</b>	<b>PACKAGING</b>	<b>21</b>
<b>BRAKE DISCS</b>		<b>NEW WEBSITE</b>	<b>22</b>
Hornet Wave Brake discs	<b>12</b>	<b>FUTURE DEVELOPMENT</b>	<b>23</b>
Floating Brake discs			
Solid Brake discs	<b>13</b>		





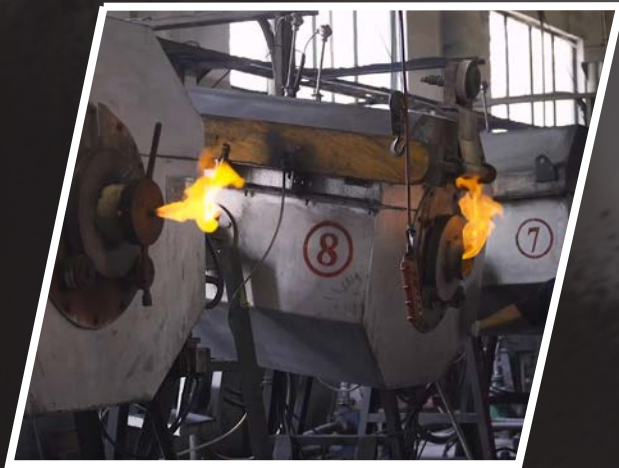
# MAKING THE MTX DIFFERENCE.

---

MTX - Performance Powersports Products. We design, develop and manufacture a wide range of products specific to the powersports market. In 2013 MTX started with brake discs and sprockets. Since then the range has developed into a comprehensive line including cables and filters with many more categories in the works.

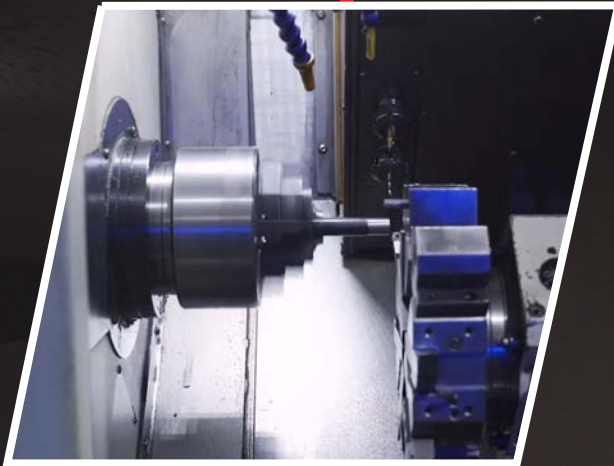
MTX believe in producing great products that are affordable. We utilize advanced technologies and quality raw materials to ensure a high standard of finish.

Our marketing efforts are focused on creating a cohesive story across all media from packaging to social content and sponsorships.



## **HIGH QUALITY CONSTRUCTION.**

Through use of high quality materials and machines, we set the benchmark for maximum durability and quality.



## **INVESTED IN R&D.**

MTX offer an industry leading range of products that provide distributors and consumers peace of mind. With investments in R&D, we never stop improving our products.



## **WIDE RANGE & AVAILABILITY.**

MTX manufacture and supply a wide range of high performance products to distributors and consumers across the world. MTX holds a large range of stock at our main warehouse.



# SPONSORSHIP

## DIXON RACING TEAM (DRT)

United Kingdom / FIM World Motocross Championship

MTX are proud supporters of the Dixon Racing Team (Big Van World MTX Kawasaki). MTX supported DRT for the 2021 MXGP season with Courtney Duncan claiming her third consecutive FIM Womens World Title (WMX).

MTX continues to support DRT for the FIM World Motocross Championship 2022 season. The fire and determination still burns for DRT team riders and we look forward to some good results this season.

Follow the team on Instagram: [@dixonracingteam](#)

## TWENTY22 MXGP RACE TEAM

COURTNEY DUNCAN



MIKKEL HAARUP



TAYLOR HAMMAL



# BRIDGESTONE KAWASAKI RACE TEAM

New Zealand / NZ Senior Motocross Championship

MTX have been a proud partner of the Bridgestone Kawasaki Race Team (NZ) for several seasons now. The team have performed consistently over the years with podium finishes and championship battles.

While New Zealand has canceled many events through 2021/2022 due to CV19 restrictions, the team still managed to compete at various regional events securing wins.

Follow the team on Instagram:  
[@bridgestonekawasakiraceteam](https://www.instagram.com/bridgestonekawasakiraceteam)



# EMPIRE KAWASAKI RACE TEAM

Australia / Australian ProMX Championship / Arena Cross

For the second year MTX are supporting one of Australia's leading ProMX teams Empire Kawasaki as they set sights on the Championship.

With local riders Jayden Rykers competing in MX1, Jai Constantinou, and Japanese rider Haruki Yokoyama in MX2; Team riders are fit and healthy with a desire to win.

Follow the team on Instagram:  
[@empirekawasaki](https://www.instagram.com/empirekawasaki)



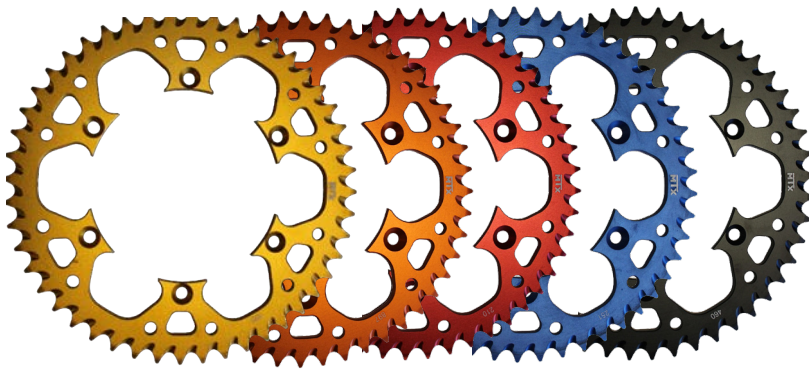
# MTX

## ZERO

AVIATION GRADE 7075-T6 ALUMINIUM



CNC machined from aviation grade 7075-T6 alloy; the MTX Zero Alloy Rear Sprockets are your go-to option for the lightest possible sprocket solution.



Over 90+ sprockets in our Zero range.

### QUICK SPECS

#### 7075-T6 ALUMINIUM

LOW WEIGHT & HIGH STRESS RESISTANCE

#### CNC MACHINED

PRECISION CUT FOR A PERFECT FIT

#### LIGHTWEIGHT DESIGN

UP TO 66% LIGHTER THAN STEEL

#### ANODISED FINISH

FOR THAT FACTORY LOOK

#### SELF CLEANING MUD GROOVES

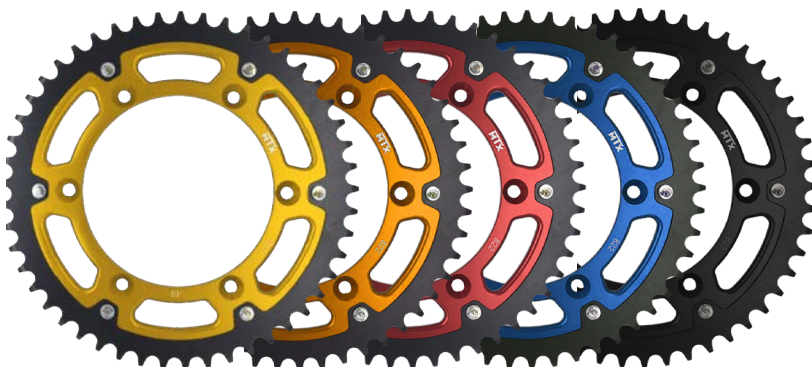
EXTEND CHAIN & SPROCKET LIFE

## RAPTOR

BI-METAL STEEL & 7075-T6 ALUMINIUM



Offering the best of both worlds; 7075-T6 aluminium alloy center and durable steel outer ring, held together by sturdy and durable stainless steel rivets. MTX Raptor Bi-Metal rear sprockets can last up to 3 times longer than an aluminium sprocket.



Over 50+ sprockets in our Raptor range.

### QUICK SPECS

#### LIGHTWEIGHT DESIGN

UP TO 66% LIGHTER THAN STEEL

#### 7075-T6 ALUMINIUM

LOW WEIGHT & HIGH STRESS RESISTANCE

#### CNC MACHINED

PRECISION CUT FOR A PERFECT FIT

#### ANODISED FINISH

FOR THAT FACTORY LOOK

#### SELF CLEANING MUD GROOVES

EXTEND CHAIN & SPROCKET LIFE



# SPROCKETS



Fully-heat treated steel, and computer designed weight reduction holes. MTX Hornet will last longer than any alloy sprocket and weigh less than solid OEM steel sprockets.



Over 100+ sprockets in our *Hornet* range.

## QUICK SPECS

**ELECTROPLATED NICKEL FINISH**  
ANTI-CORROSION & WEAR RESISTANCE

**CNC MACHINED**  
PRECISION CUT FOR A PERFECT FIT

**LIGHTWEIGHT DESIGN**  
30% LIGHTER THAN THE OE STEEL EQUIVALENT

**CASE-HARDENED CHROMOLY STEEL**  
MAXIMUM STRENGTH AND DURABILITY



MTX OE replacement front sprockets are constructed from SCM420 Chromoly steel alloy where rear sprockets are constructed from C45 High Carbon Steel and Zinc Electroplate finish.



Over 1300+ sprockets in our *OE Steel* range.

## QUICK SPECS

**HIGH QUALITY STEEL**  
HEAT-TREATED AND HAND-FINISHED FOR LONGEVITY

**ELECTROPLATED ZINC FINISH**  
ANTI-CORROSION & WEAR RESISTANCE

**DIRECT REPLACEMENT**  
FOR OEM FITMENT

**WIDE FITMENT RANGE**  
415 - 630 PITCH AVAILABLE

# MTX

## ORBIT-X

X-RING MOTORCYCLE CHAIN



For when performance matters! Orbit-X utilizes a specially designed 4 lip seal that ensures excellent lubrication throughout the chains lifetime. Designed for use on high performance road and off-road machines. Available in silver & gold.



X-RING

SOLID BUSH

- ▶ HIGH PERFORMANCE X-RING CHAIN
- ▶ MINIMUM MAINTENANCE
- ▶ HIGH QUALITY PIN MATERIAL
- ▶ 4-SIDED RIVETING



X-RING SEALED



LIGHTWEIGHT

AVAILABLE SIZES:

520 | 530

## ORBIT-0

O-RING MOTORCYCLE CHAIN



Hitting the tracks or cruising the streets, Orbit-0 is the chain for road & off-road bikes 50-500cc. Orbit-0 offers high quality materials and permanent lubrication sealing between pin/bush. Available in silver and gold.



O-RING

SOLID BUSH

- ▶ HIGH PERFORMANCE O-RING CHAIN
- ▶ MINIMUM MAINTENANCE
- ▶ HIGH QUALITY PIN MATERIAL
- ▶ 4-SIDED RIVETING



O-RING SEALED



LIGHTWEIGHT

AVAILABLE SIZES:

525 | 530

## ORBIT-HD

PREMIUM HD MOTORCYCLE CHAIN



Designed for maximum mileage, the Orbit-HD is a non-sealed chain best paired to road and off-road bikes under 350cc. Available in sizes 420-530 and in silver and black.



**NON-SEALED**

**CURLED BUSH**

- ▶ INCREASED TRANSMISSION POWER
- ▶ OPTIMAL TENSILE STRENGTH
- ▶ MORE MILEAGE, LONGER LIFE



AVAILABLE SIZES:

**420 | 428 | 520 | 525 | 530**



# BREAKING NEW GROUND.

# HORNET

SUS420 STAINLESS STEEL WAVE BRAKE DISC



Superior strength and durability while keeping you in control under high stress braking. Discs are constructed using one complete segment of SUS 420 stainless steel, then heat-treated to HR 36+-2.



Over 15+ discs in our NEW *Hornet Wave* range.

## QUICK SPECS

### SUS 420 STAINLESS STEEL

INCREASED STRENGTH AND CORROSION RESISTANCE

### CNC MACHINED

PRECISION CUT FOR A PERFECT FIT

### DIRECT REPLACEMENT

FOR OEM FITMENT

### HIGH TECH WAVE PERFORATED DESIGN

OPTIMUM HEAT DISSIPATION AND SELF-CLEANING

# FLOATING DISCS



Made from two segments of stainless steel; The outer section is manufactured from Japanese SUS 420 stainless steel, then heat-treated to HR 36+-2 while the center of the disc is manufactured from steel or alloy.



Over 100+ discs in our *Floating Steel* range.

## QUICK SPECS

### SUS 420 STAINLESS STEEL

INCREASED STRENGTH AND CORROSION RESISTANCE

### CNC MACHINED

PRECISION CUT FOR A PERFECT FIT

### DIRECT REPLACEMENT

FOR OEM FITMENT

### OEM DESIGN

LIGHTENING & DRILL HOLE PATTERNS

# BRAKE DISCS

## SOLID DISCS



UTV



ATV



ROAD



OFF-ROAD

MTX solid discs are constructed using one complete segment of SUS 420 stainless steel, then heat-treated to HR 36+-2.



Over 400+ discs in our *Solid Steel* range.

### QUICK SPECS

#### **SUS 420 STAINLESS STEEL**

INCREASED STRENGTH AND CORROSION RESISTANCE

#### **CNC MACHINED**

PRECISION CUT FOR A PERFECT FIT

#### **DIRECT REPLACEMENT**

FOR OEM FITMENT

#### **OEM DESIGN**

LIGHTENING & DRILL HOLE PATTERNS

# OUT BRAKE THE BEST.



# FOAM AIR FILTERS



UTV



ATV



ROAD



OFF-ROAD

MTX Foam Air Filters are produced using a superior design and high-quality material. Optimum air flow is achieved with our own dual stage foam, also providing maximum filtration and engine protection from dirt/dust. Available for all popular makes and models.

## QUICK SPECS

### HIGH FLOW RATE

IMPROVE ENGINE PERFORMANCE

### DUAL STAGE FOAM

PRECISION CUT FOR A PERFECT FIT

### SUPERB ENGINE PROTECTION

FOR OEM FITMENT

### WASHABLE & REUSABLE

LONG LIFE FILTER



Over 150+ Foam Air Filters in our range.

## OE AIR FILTERS



UTV



ATV

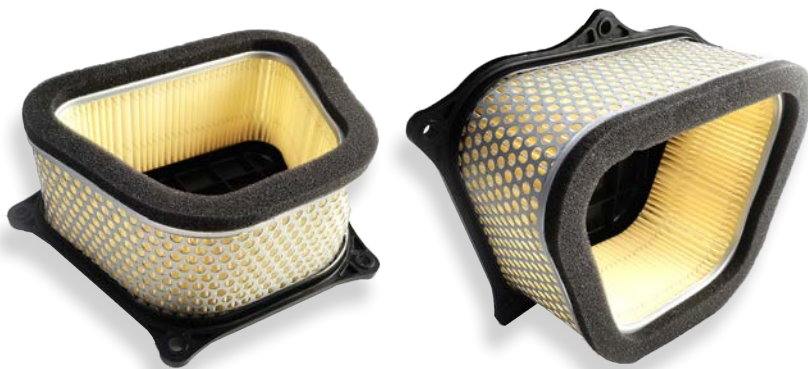


ROAD



OFF-ROAD

MTX OE Replacement Filters are manufactured using only the highest-grade materials, for maximum filtration and air flow. Available to suit popular makes and models.



Over 150+ OE Air Filters in our range.

### QUICK SPECS

#### HIGH FLOW RATE

IMPROVE ENGINE PERFORMANCE

#### PREMIUM PLEATED MEDIA

PROVIDES PROTECTION AGAINST CONTAMINANTS

#### DIRECT REPLACEMENT

FOR OEM FITMENT

## OIL FILTERS



UTV



ATV



ROAD



OFF-ROAD

MTX Oil Filters are manufactured using only the highest-grade materials, for maximum filtration and flow. Available to suit all popular makes and models; MTX Oil Filter range covers both cartridge and cannister fitments.



Over 60+ Oil Filters in our range.

### QUICK SPECS

#### HIGH FLOW RATE

IMPROVE ENGINE PERFORMANCE

#### PREMIUM PLEATED MEDIA

PROVIDES PROTECTION AGAINST CONTAMINANTS

#### DIRECT REPLACEMENT

FOR OEM FITMENT

# MOTORCYCLE RIM

7050 T6 PERFORMANCE SERIES ALUMINIUM ALLOY



## **7075** T6 ALUMINIUM ALLOY

The MTX Rim is an exceptional replacement motorcycle rim for OEM wheels. Made from tough 7075-T6 series aluminium with an anodised finish; these rims not only look great, they are durable enough to handle the extremes of motocross and off-road racing. MTX Rims work with stock spokes.

### QUICK SPECS

**7075 T6 ALUMINIUM ALLOY**  
INCREASED STRENGTH AND CORROSION RESISTANCE

**ANODISED FINISH**  
FOR THAT FACTORY LOOK

**OEM COMPATIBLE**  
WITH ORIGINAL SPOKES

**DIRECT REPLACEMENT**  
FOR OEM FITMENT

**BLACK ANODISED ALLOY****SILVER ANODISED ALLOY****AVAILABLE SIZES:****14** | **16** | **17**  
INCH INCH INCH**18** | **19** | **21**  
INCH INCH INCH



# FOOT RESTS



MTX Road Footrests enhance stability, comfort and offer extra grip to your bike. Footrests come in complete kits with all necessary parts to mount the footrest on original mounting points.



## QUICK SPECS

**STRONG RUBBER AND STEEL MATERIAL**  
FOR DURABLE USE

**DIRECT OE REPLACEMENT**  
WITH COMPLETE INSTALLATION KITS

**WIDE RANGE**  
FOR MOST POPULAR MODELS



# THROTTLE TUBES

QUALITY THROTTLE TUBE FOR ORIGINAL REPLACEMENT



Made from durable nylon composite, MTX quality throttle tube replacements meet or exceed OEM specifications. A one-piece tube and reel design allows smooth acceleration and feel when riding your motorcycle.



## QUICK SPECS

**OEM THROTTLE TUBE REPLACEMENT**  
FOR MOST POPULAR MODELS

**DURABLE NYLON COMPOSITE**  
MORE RESILIENT THAN ALUMINIUM TUBES

**ONE-PIECE TUBE AND REEL DESIGN**  
PROVIDES SMOOTH ACCELERATION

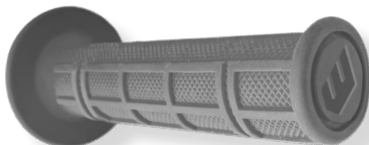
**OPEN END**  
FOR USE WITH ALUMINIUM HAND GUARDS AND BAR ENDS

# HANDLEBAR ACCESSORIES

## MOTORCYCLE GRIPS



Whites Grips are designed to improve feel, grip and durability. Available in Half-Waffle, Full-Waffle, ATV and Road grip patterns. (Black, Red and Grey)

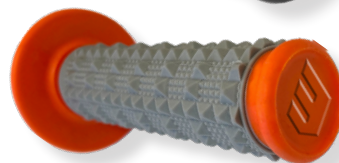


### QUICK SPECS

**SOFT COMPOUND**  
EXCEPTIONAL COMFORT

**SAFETY WIRE GROOVES**  
TO ALLOW SECURE GRIP PLACEMENT

**UNIVERSAL FITMENT**  
FITS BOTH STANDARD AND FATBARS



## CABLES



MTX cables are a quality alternative to OEM Cables. The black vinyl outer cover reliably protects the coil-wound housing from dirt and damage. A pre-lubricated nylon inner sleeve guarantees smooth operation and longevity. All relevant components for a complete cable replacement are included.

### QUICK SPECS

**DIRECT REPLACEMENT**  
FOR OEM FITMENT

**STANDARD BLACK VINYL**  
COIL-WOUND HOUSING

**INNER NYLON SLEEVE**  
LONGER LIFE AND SMOOTH OPERATION

**ADJUSTERS AND FITTINGS**  
FOR CORRECT FITMENT



Over 250+ Cables in our range.

# SUSTAINABLE PACKAGING.

MTX know that **SMALL CHANGES CAN MAKE A BIG IMPACT** 

When it comes to our packaging, we have made a conscious decision to carefully review materials and where possible use either recycled or recyclable products.

Packaging in most cases is seen by consumers before the product, it should be innovative, look good on the shelf and contain it's product with pride. There is no reason why it cannot have less impact on the environment while also achieving it's other purposes.

Join us in ensuring a strong future for motorcycling.

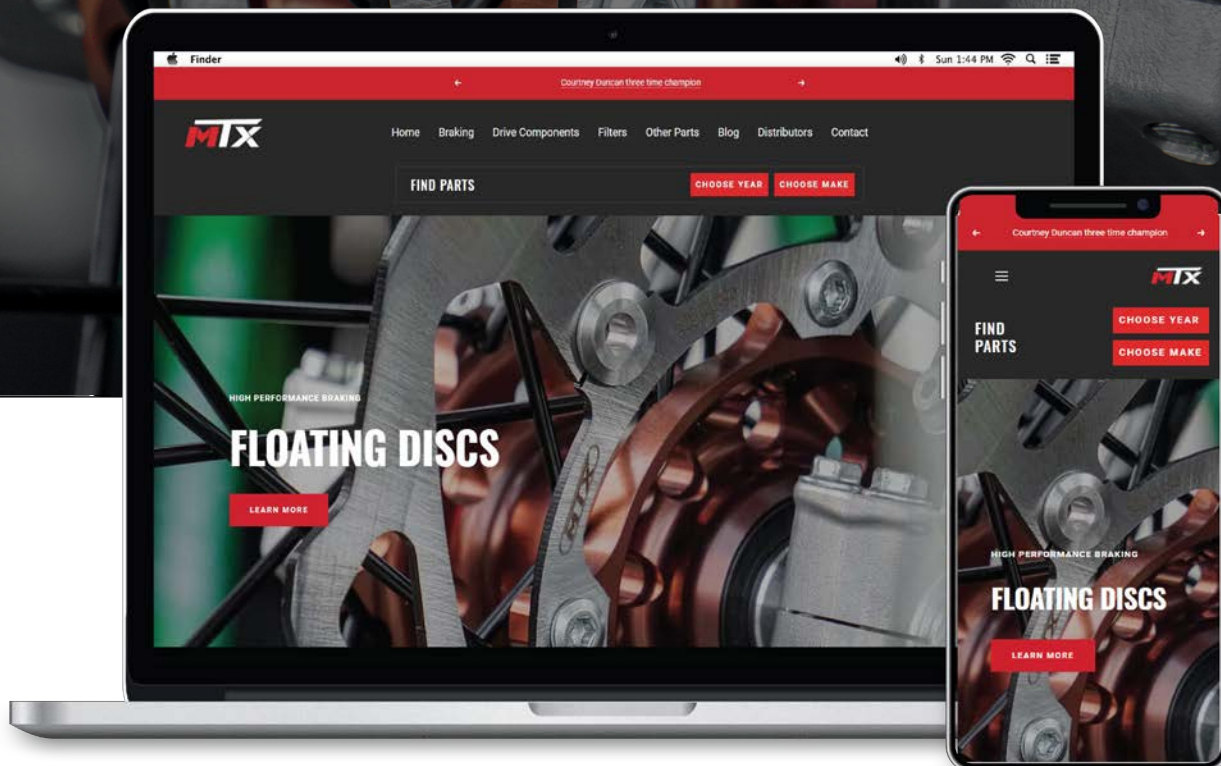
Please dispose of our packaging responsibly.





# ALL NEW AND IMPROVED WEBSITE

[WWW.MTXPARTS.COM](http://WWW.MTXPARTS.COM)



## LEADING PARTS DATABASE

With over 200,000 fitment connections for 3000+ motorcycle models, our database is industry leading.

## EASIER NAVIGATION

Whether you're browsing our site or looking for fitment information - We've made it easy.

## NEW AND IMPROVED PARTS FINDER

Our parts finder is designed to make it easy to find the right MTX parts to suit your motorcycle.

# FUTURE PRODUCT DEVELOPMENT.

---

MTX continue to develop industry leading products that offer distributors and consumers peace of mind.

With investments in R&D, we never stop improving our products. We are always looking at ways to build our product range and continue to produce high performance products for the motorcycling market.



**MTX**



**WWW.MTXPARTS.COM**

 [sales@mtxparts.com](mailto:sales@mtxparts.com)

 [facebook.com/mtxparts](https://facebook.com/mtxparts)

 [@mtxparts](https://@mtxparts)