

# SOUL

SERIES 2



**zumex**<sup>®</sup>



NEW

# Soul Series 2

The world of juice will never be the same again, thanks to the new Soul. This is the start of a new future in which maximum innovation and authentic style are contained in the minimum space.

Small. Smart. Stylish



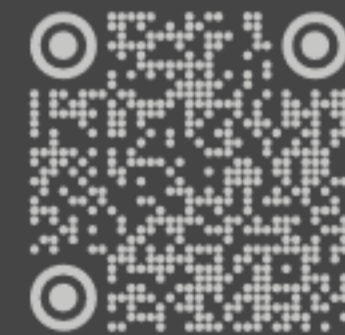
SOUL SERIES 2

Black  
Smoke Grey

Black  
Natural Sand

White  
Smoke Grey

White  
Natural Sand



See video

## Four models that multiply your options

Soul Series 2 offers a new perspective for the most demanding customers. The most compact Zumex commercial juicer offers now the best performance and style ever.





## A new universe to be explored

Soul Series 2 offers a world  
of possibilities to design spaces  
that are looking for a  
different Juice Experience.

Soul Juice  
Experience



SOUL SERIES 2



Coffee Shops  
Healthy Restaurants  
Iconic Bars  
Cocktail Bars  
Fast Good  
Latin Restaurants  
Asian Restaurants  
Bakeries & Patisseries  
Chic Hotels  
Airport Lounges  
VIP Rooms at venues  
Executive Offices  
and many more



# Smart Juicing Technology

## The first Smart Juicer

The first automatic juicer that provides information about the productivity of your machine in real time.



Learn more about  
Zumex Connect



## Connect with your Soul Series 2

- Control your business remotely
- Improved machine productivity
- Predictive maintenance
- Status notifications
- Configurations







## Push&Juice Natural intuition

A new way to make juice,  
at the push of a button.



Glasses  
↑ 140 mm Maximum height

## Light up the juice of the future

The design of its new  
exclusive, user-friendly tap  
serves juice perfectly.

Smooth flow and zenithal  
lighting for an improved  
juicing experience.



**1Step Case Out**  
Remove the juicing unit  
cleanly and comfortably.



**Waste capacity**  
7 L / 12-14 oranges



**Very quiet**  
<60dB  
Respects the atmosphere  
of your premises



— Ultra  
— Compact

1 juice 10"

### Optimising Juicing

It is simply amazing that so little space can offer such good capacity and speed.

### ASP®

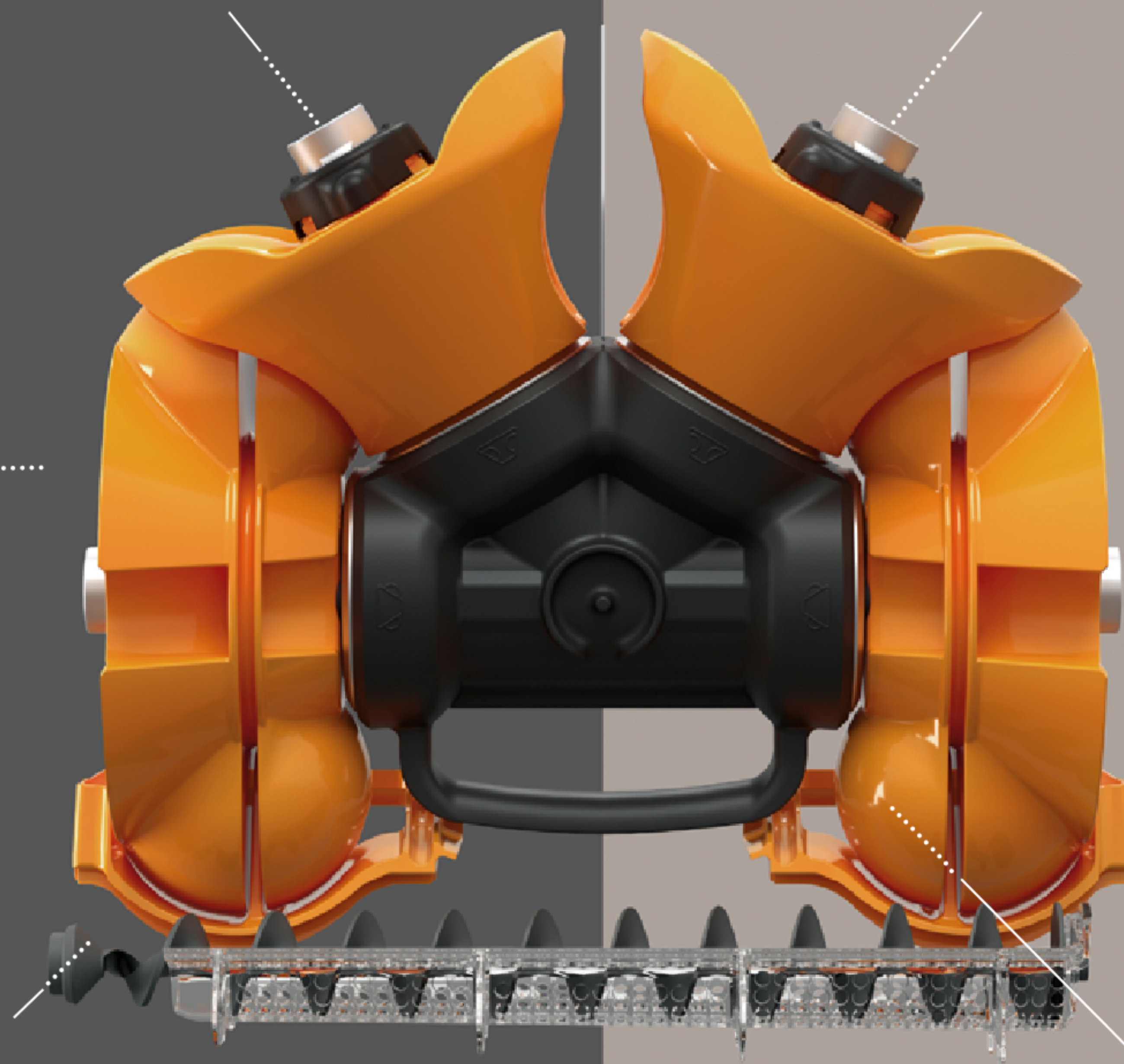
Antibacterial nanotechnology

Maximum hygiene thanks to our technology based on silver ions that inhibits the growth of bacteria. Extra effective and long-lasting protection.



### PulpOut System

Automatic sweeping filter to extract excess pulp and seeds. High level of autonomy. Accessible without removing the juicing unit.



### Conical System® 18 fruits/minute

Innovation in full evolution. Our system has been designed to squeeze twice as fast.

Squeeze any citrus fruit using specific kits

- ORANGES
- TANGERINES
- LIMES
- LEMONS

### Easy disassemble and cleaning

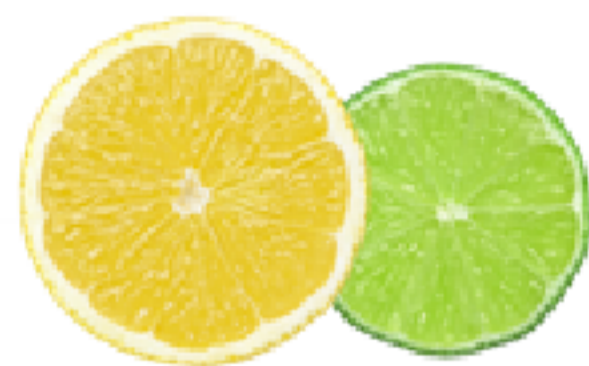
100% Dishwasher Safe  
\*All parts in contact with the juice.





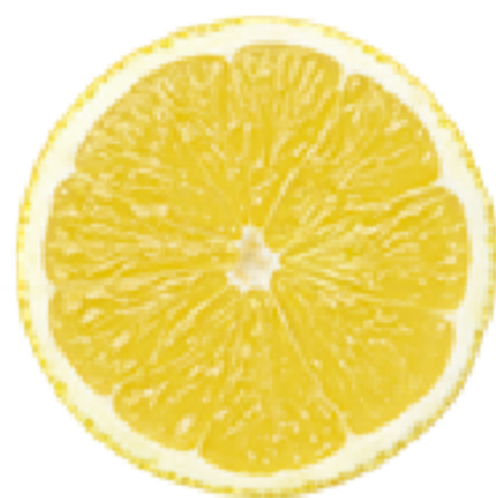
— 3 Kits  
all citrus

45→65 mm.



LEMONS\*  
LIMES

64→81 mm.

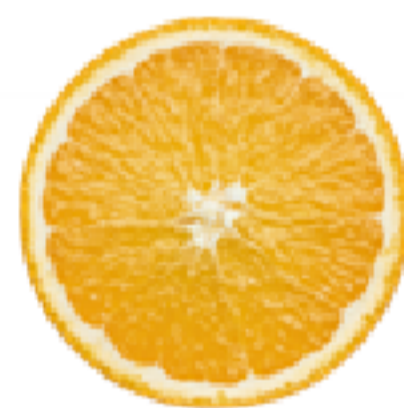


LEMONS\*

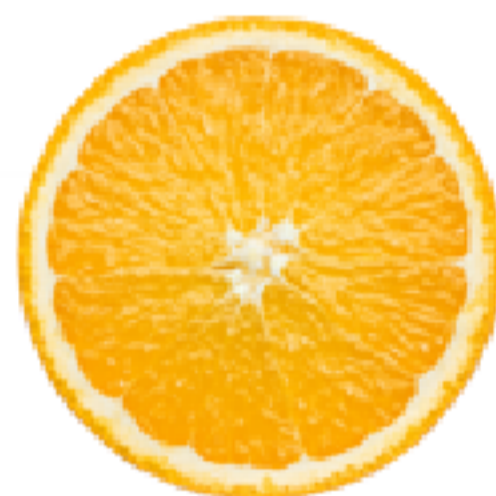
42→52 mm.



LIMES



TANGERINES



ORANGES

KIT S

KIT M

KIT XS



Only Soul can adapt to any type of citrus fruit.

With the Soul Series 2 squeezing kits, you can squeeze any citrus fruit ranging from 42 to 81 mm.

\*See technical characteristics.



Far beyond juice

Cocktails, mocktails, pastries, dressings, sauces...  
Maximum delicacy to obtain the highest performance from each citrus fruit.

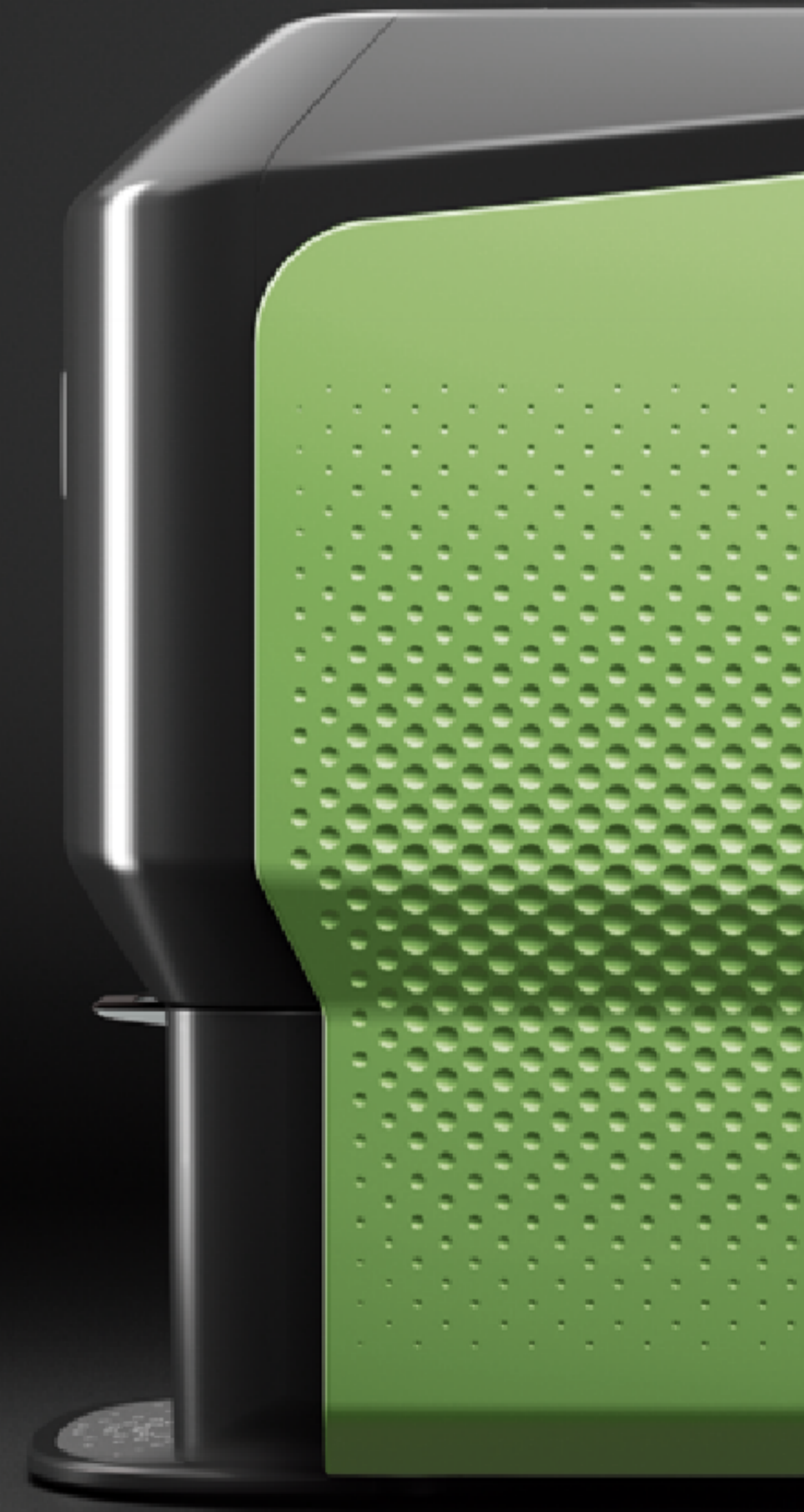
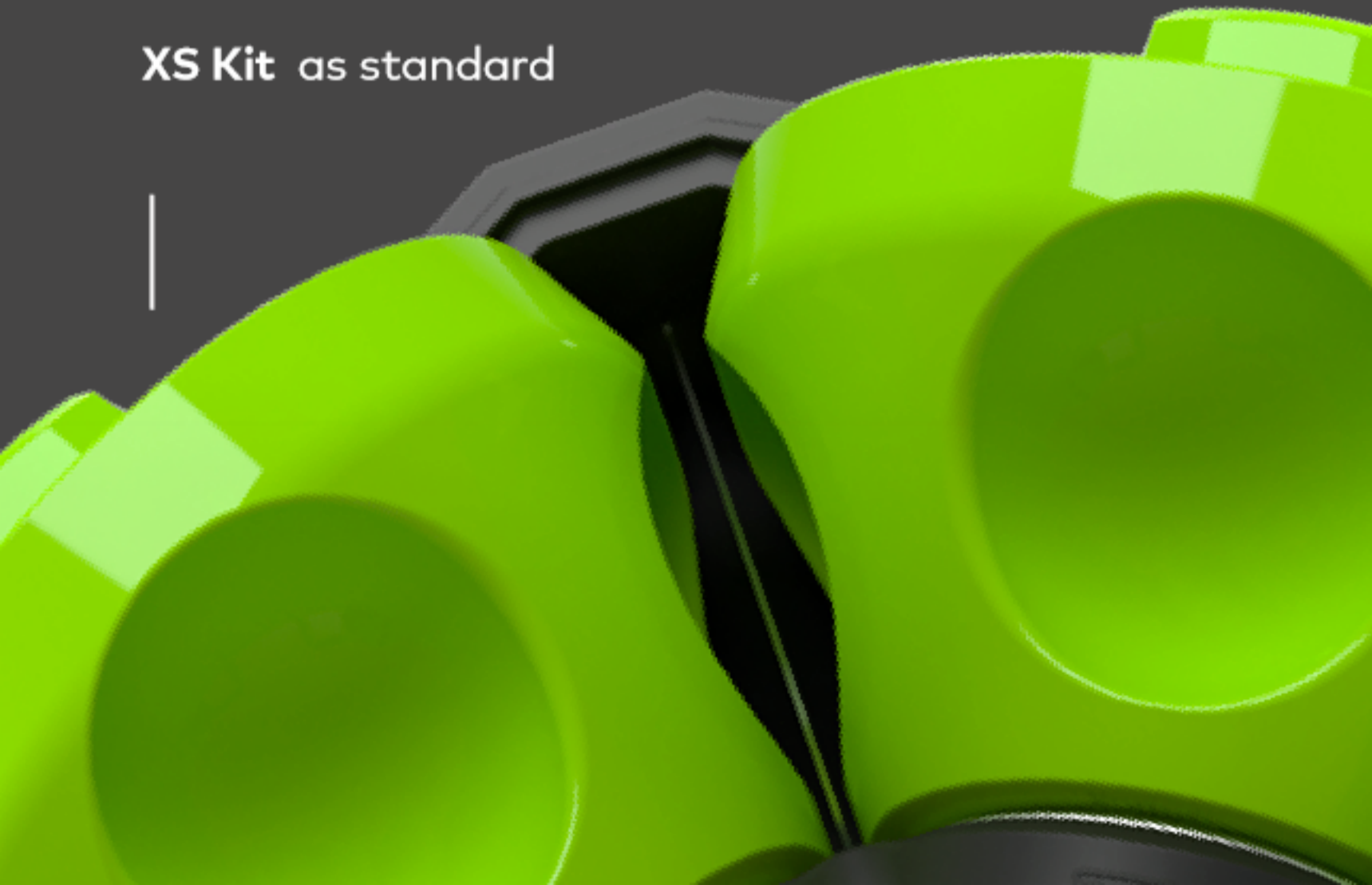




Soul Limes

Special Edition Limes  
in body and soul

XS Kit as standard



SOUL SERIES 2



An edition  
designed for  
specialists

Soul Series 2 Limes is specially designed for those places where citrus fruits, specially limes are the protagonists.





Soul Series 2  
— Juice Kart



# NEW SOUL ACCESSORIES

## Complement your juice corner

Soul Series 2 includes accessories to create the perfect atmosphere for the best juice service.

Soul reinvents the juice service with its new Juice Kart



ROOM FOR  
GLASS DISPENSER

JUICE KART  
DETAILS

## Take natural juice anywhere

Exclusive design with wheels, easy to move, to take your Soul wherever your business requires it.

Width | Depth | Height  
856 x 580.5 x 939 mm  
33.7 " x 22.8 " x 36.9 "

## A comprehensive service

It has an extra area for the storage of fruit, glasses, napkins, and other accessories.

## Room for everything you need

Cabinet with capacity to store up to 20 kg of oranges.



## Soul-grade finishes

To accompany you wherever you need.

## Integrated Waste Removal

35 Kg of fruit  
14 L of juice capacity.





### Cup dispenser

with serviette holder for an optimum experience.

### Cashless Mode Dispenser

Module with touchless payment method.  
Pay and activate the service automatically.

4 payment methods:

Contactless (mobile or card), Chip,  
Magnetic Stripe, MIFARE.

### Fruit basket

Genuine design  
More than 8 kg of oranges

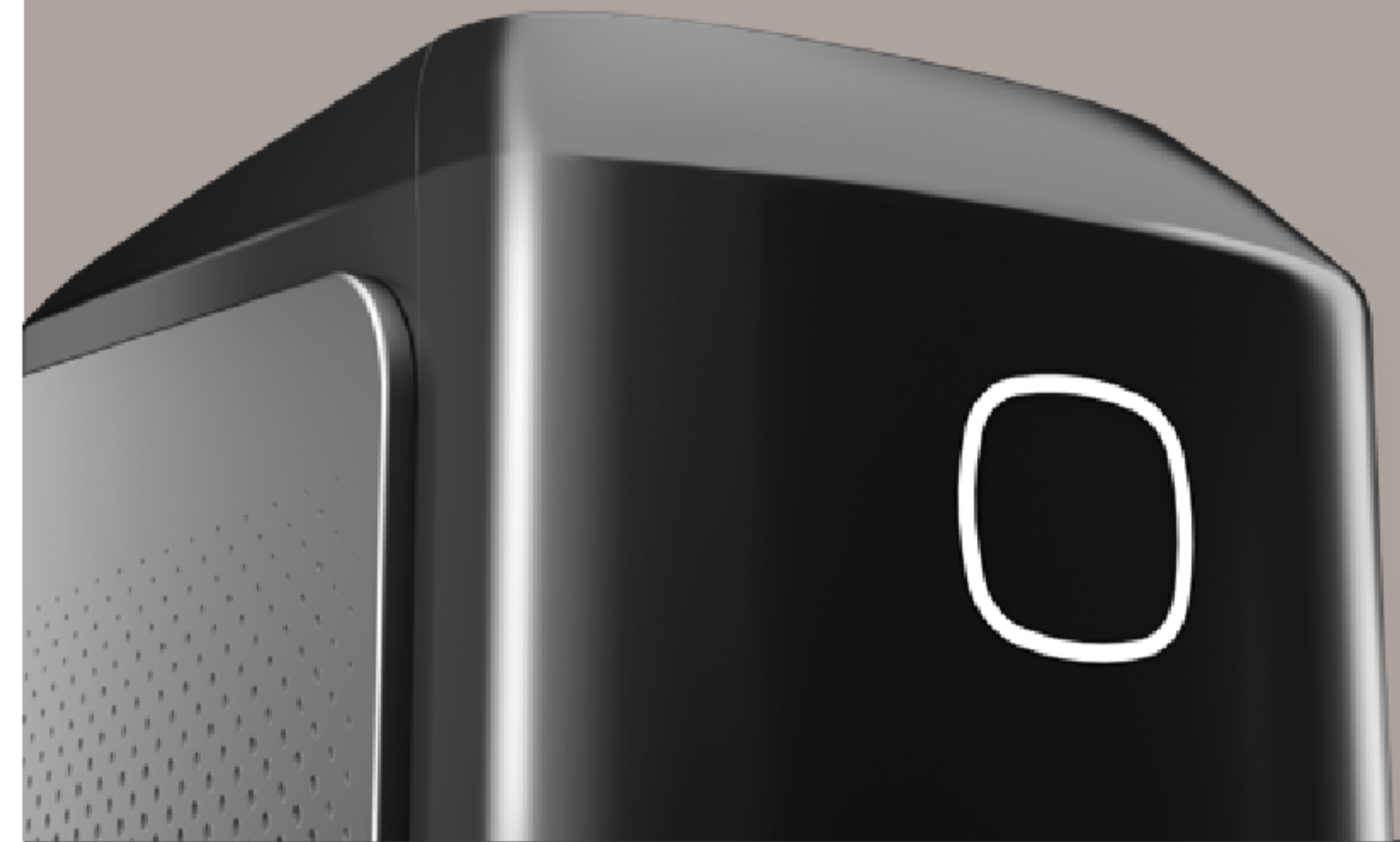


### Countertop Kit

Non Stop Juicing thanks  
to its waste removal



SOUL SERIES 2



– Technical Features

<b>Fruits</b>	Oranges, tangerines, limes, lemons*	<b>Connectivity</b>	Wi-Fi
<b>Fruits per minute</b>	M/S KIT: 18 fruits /min XS KIT: 36 fruits / min	<b>PulpOut System</b>	Automatic pulp and seed removal
<b>Speed</b>	1 juice in 10"	<b>Measurements</b> Width   Depth   Height	300 x 480 x 537 mm 11.8" x 18.9" x 21.1"
<b>Feeder capacity</b>	3-6 oranges   7-8 limes	<b>Net weight</b>	32 kg   71 lb
<b>Waste container capacity</b>	16-18 oranges   30-35 limes	<b>Voltage</b>	100-240VAC   50/60Hz
<b>Diameter of fruit</b>	M KIT: 64 – 81 mm S KIT: 45 – 65 mm XS KIT: 42 – 52 mm	<b>Power</b>	100 W   0.134 hp
<b>Juicing system</b>	Conical System® with ASP®	<b>Consumption</b>	0.4 - 3.4A (100-130VAC) 0.3 - 1.5A (220-240VAC)
<b>Compatible juicing kits</b>	M, S, and XS KIT	<b>Sound pressure level</b>	Less than 60 dB
<b>Approximate time for disassembly and cleaning</b>	Less than 15 minutes	<b>Colours</b>	2 colours: White and Black 2 finishes: Smoke Grey, Natural Sand Soul Limes: Light Green

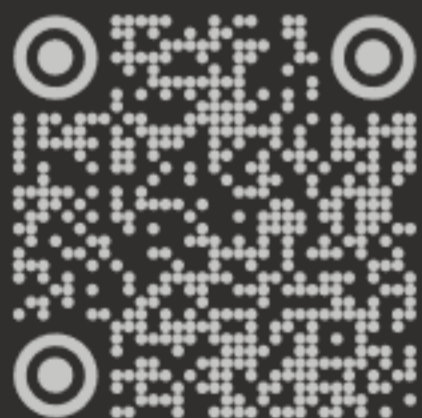
\* It is recommended to squeeze a variety of lemons with rounded and thin skin. Examples: Eureka, Lisbon, Meyer.

Patent  
Pat. Pending

ES2567101A1. | WO2016059186A1 | ES2527974B1 | WO2013182712A2  
P201930926 | DMC: 007055652



Scan for +info



Zumex Group | Headquarters  
Tel. +34 961 301 251 | [zumex@zumex.com](mailto:zumex@zumex.com)

euro-MILAN  
DISTRIBUTING

115 Matheson Blvd E Mississauga, ON L4Z 1X8  
[www.euromilan.com](http://www.euromilan.com)  
[info@euromilan.com](mailto:info@euromilan.com)  
Tel: 905 501 8600  
Toll Free: (855) 544 8600

Life Essence [zumex.com](http://zumex.com)

