

# 肝是人體的超級工場

肝臟為人體最大的消化腺體，可重達1.5公斤，也是功能最複雜的內臟器官。它於體內擔當著非常重要的角色，包括能量儲備、製造膽汁和蛋白質、脂肪代謝、分解毒素和平衡荷爾蒙等等。

## 肝之大解剖

### 解毒

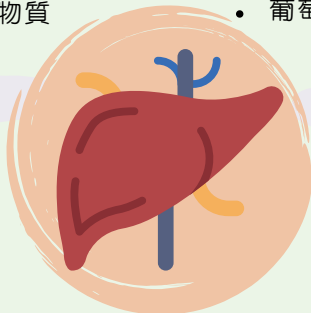
- 藥物、酒精
- 有毒化學物質

### 轉化

- 氨基酸 > 尿素
- 葡萄糖 > 肝醣

### 製造

- 蛋白質
- 膽汁
- 凝血因子



### 代謝

- 紅血球
- 脂肪
- 維生素
- 荷爾蒙

### 儲存

- 脂肪
- 葡萄糖
- 礦物質 (如鐵、銅)
- 維生素 (如A、B、D、E、K)



# 提供全面解決方案

營養師諮詢服務

「醫療級別」營養補充品

排毒養生

天然茶療

特選檢測項目

安全

無副作用

通過品質及安全測試



enas.wellness



enas.wellness

Endless

ENAS

wellness



# Clear Up 清肝勁



## 護肝排毒

## 遠離毒素

\*此產品沒有根據《藥劑業及毒藥條例》或《中醫藥條例》註冊。為此產品作出的任何聲稱亦沒有為進行該等註冊而接受審核。此產品並不供作診斷、治療或預防任何疾病之用。

www.enaswellness.com

# Clear Up是你最強後盾

含多種超級抗氧化物，配方特別為肝臟排毒機制而設，從而改善因以下毒素積聚而帶來的種種問題：



## 產品七大功效\*

- ✓ 有助強化及保護肝細胞
- ✓ 有助加快排走體內毒素及重金屬
- ✓ 有助膽汁分泌
- ✓ 有助提升GSH水平
- ✓ 有助平衡內分泌及荷爾蒙
- ✓ 舒緩因毒素引起的炎症
- ✓ 減少肝臟脂肪囤積



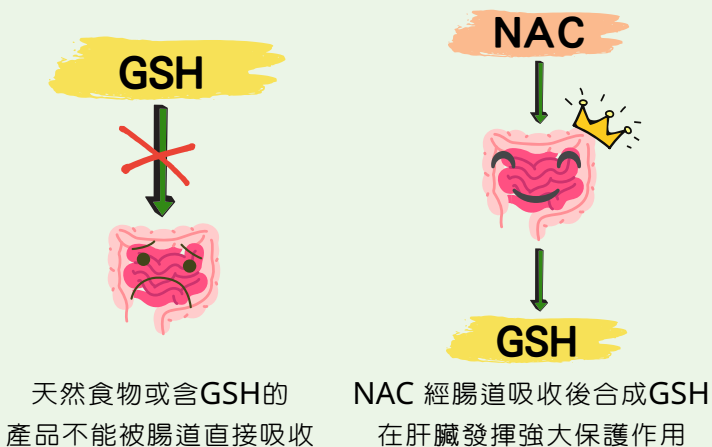
## 產品特色

4種超強肝排毒元素 產生協同效應



## 為什麼Clear Up沒有GSH?

無可置疑，GSH為肝的重要抗氧化物之一，能有效預防細胞突變，特別針對預防酒精性或非酒精性的脂肪肝有重大作用。可是，由於GSH容易被腸道中的消化酵素分解，因此不能有效地被腸道直接吸收。所以Clear Up採用了GSH的前身物NAC，能迅速被腸道吸收，並合成GSH，從而在肝臟發揮最大功效。



市場唯一水飛薊種子配合  
肝臟所需四大強力元素  
一天兩粒 強化肝臟解毒力



### 成份

水飛薊提取物 (水飛薊種子)	200毫克
(標準含量為80%水飛薊素黃酮)	
N-乙酰基-L-半胱氨酸 (NAC)	150毫克
硫辛酸	50毫克
L-蛋氨酸	25毫克
半胱氨酸	50毫克
牛磺酸	50毫克
三甲基甘氨酸 (甜菜鹼)	150毫克

### 特別適合人士

肝臟功能欠佳  
經常外出用膳或高脂飲食  
吸煙者或長期接觸二手煙  
飲酒或需要經常應酬  
長期熬夜或作息不定時  
壓力大或睡眠質素欠佳  
荷爾蒙失衡  
膽切除人士



60粒

### 食用方法

成人每日2粒，餐後服用  
有需要時 (如需應酬或熬夜) 可多服用2粒



# Human Body Factory - Liver

Liver is the largest digestive gland in the human body, weighing up to 1.5 kg, and it is also the most complex internal organ. It plays a very important role in the body, including energy storage, production of bile and protein, fat metabolism, decomposition of toxins and balance of hormones, etc.

## Anatomy Of Liver

### Detox

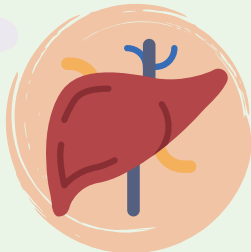
- Drugs, Alcohol
- Toxic chemicals

### Methylated

- Amino Acids > Urea
- Glucose > Glycogen

### Synthesis

- Protein
- Bile
- Clotting Factor



### Metabolize

- Red Blood Cells
- Fat
- Vitamins
- Hormones

### Storage

- Fat & Glucose
- Minerals (eg. Iron, Copper)
- Vitamins (eg. A, B, D, E, K)



# We Provide Holistic Solution

- Nutritionist Service
- Pharmaceutical-Grade Supplement
- Scientific Test
- Functional Fiber Clothing
- Tea Treatment

No Additives

No Preservation

Laboratory Tested Approved



enas.wellness



enas.wellness

Endless

ENAS

wellness



## Clear Up



Liver Detox  
 Synergistic Formula  
 Boost Liver Function  
 Improve Hormone Balance

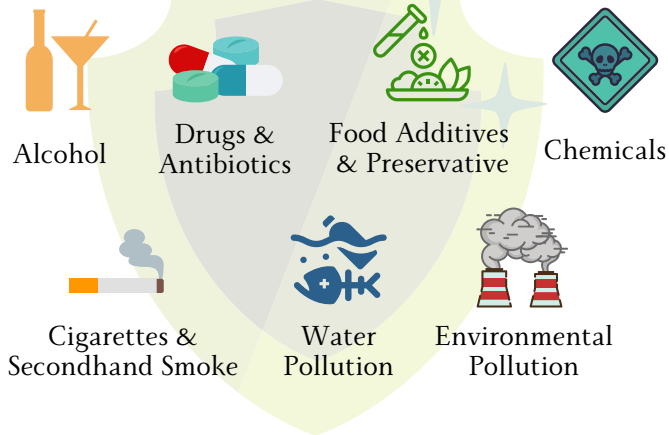
\*This product is not registered under the Pharmacy and Poisons Ordinance or the Chinese Medicine Ordinance. Any claim made for it has not been subjected to evaluation for such registration. This product is not intended to diagnose, treat or prevent any disease.

www.enaswellness.com



# Clear Up - Powerful Liver Support

Containing a variety of super antioxidants, the formula is specially designed for the liver detoxification mechanism, thereby improving the problems caused by the accumulation of the following toxins:



# Key Functions of Clear Up\*

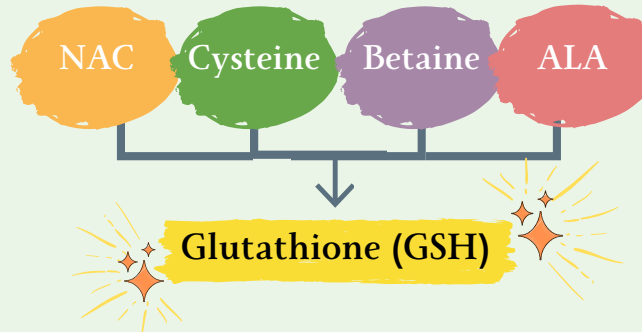
- ✓ Helps strengthen and protect liver cells
- ✓ Helps balance endocrine and hormones
- ✓ Soothes inflammation caused by toxins
- ✓ Reduce visceral fat accumulation
- ✓ Helps eliminate toxins and heavy metals from the body
- ✓ Helps bile secretion
- ✓ Helps increase GSH levels



# Why Clear Up?

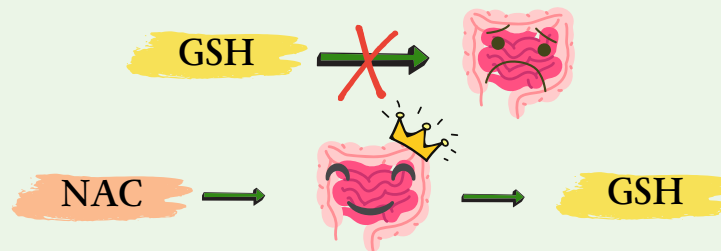
## Four Super-Powerful Liver Detoxification El

Synergistic Effect



## Why The Formula Doesn't Contain GSH?

There is no doubt that GSH is one of the important antioxidants in the liver, which can effectively prevent cell mutation, especially for the prevention of alcoholic or non-alcoholic fatty liver. However, since GSH is easily broken down by digestive enzymes in the gut, it cannot be directly absorbed by the gut effectively. Therefore, Clear Up uses NAC, the precursor of GSH, which can be quickly absorbed by the intestinal tract and synthesize GSH, thus exerting the greatest effect in the liver.



Whole Foods or GSH containing product cannot be directly absorbed by the intestinal tract

NAC synthesizes GSH after intestinal absorption that has a powerful protective effect on the liver



The only formula on the market to synthesis Glutathione  
Two capsules a day to support liver detoxification



## Main Ingredients

Milk Thistle Extract (Silybum Thistle Seed) (Standardized to 80% silymarin flavonoids)	200 mg
N-Acetyl-L-Cysteine (NAC)	150 mg
Alpha-Lipoic Acid	50 mg
L-Methionine	25 mg
L-Cysteine	50 mg
Taurine	50 mg
Trimethylglycine (Betaine)	150 mg



## Suitable For People With

- Poor liver function
- Eating out frequently or eating a high-fat diet
- Smoking, drinking alcohol, or being regularly exposed to secondhand smoke
- Irregular daily routine and poor sleeping quality
- Physical or mental stress
- Hormonal imbalance
- Cholecystectomy



## Suggested Use

Take 2 capsules daily or as directed by a healthcare practitioner. Capsule may be pulled apart and nutrients taken separately.