

nulea®
WORK WITH YOUR FAVORITE



Nulea is happy to provide its clients with help around the clock. Visit www.nulea.com and select 24/7 live chat, or send an email to support@nulea.com for immediate assistance. This product is covered in a 18-month warranty program.

support@nulea.com www.nulea.com



Before Using

Q.1

How to deal with Bluetooth disconnection, duplicate input and input lag?

1. Check the keyboard power. Low battery power can adversely affect the connectivity and overall functionality of the keyboard. For your better experience, fully charge the keyboard with the included USB-C cable before using it for the first time.
2. The delay and disconnection of the Bluetooth device may be interfered with by other devices. Try to stay away from other wireless signal sources.
3. If you are using a Bluetooth receiver for pairing connection, please insert the Bluetooth receiver closer to the keyboard to make sure the Bluetooth signal is stable. If the Bluetooth signal is still unstable, you can try to use 2.4G USB for connection.
4. Computer lag can cause unstable Bluetooth connection. Please check the computer operation or restart the computer.

Q.2

How to deal with Bluetooth pairing doesn't work, Bluetooth can't connect problem?

1. Check and make sure that the Bluetooth on your computer is turned on and make sure that the keyboard's connection channel is on the appropriate device. (Up to three devices can be connected, one for each channel)
2. Unpair and delete the keyboard's Bluetooth name on your computer's paired device. Navigate to the Bluetooth Settings pane:
 - Click Start > Settings > Devices > Bluetooth & other devices.
 - Locate your device in the Devices list, click on it and select Remove device.
 - Re-pair the device you need on the computer lists.



Work with your favorite

At Nulea, we believe you should choose the work you love and work in an environment that makes you comfortable and happy.

Nulea Ergonomic Series is intended/designed for people who demand maximum typing experience with minimum fatigue and stresses.

Nulea hopes RT05 will become your favorite keyboard and first choice, OR DO NOT HESITATE to contact support@nulea.com for money back.

Your suggestion to help us improve is also highly appreciated.



Q.3

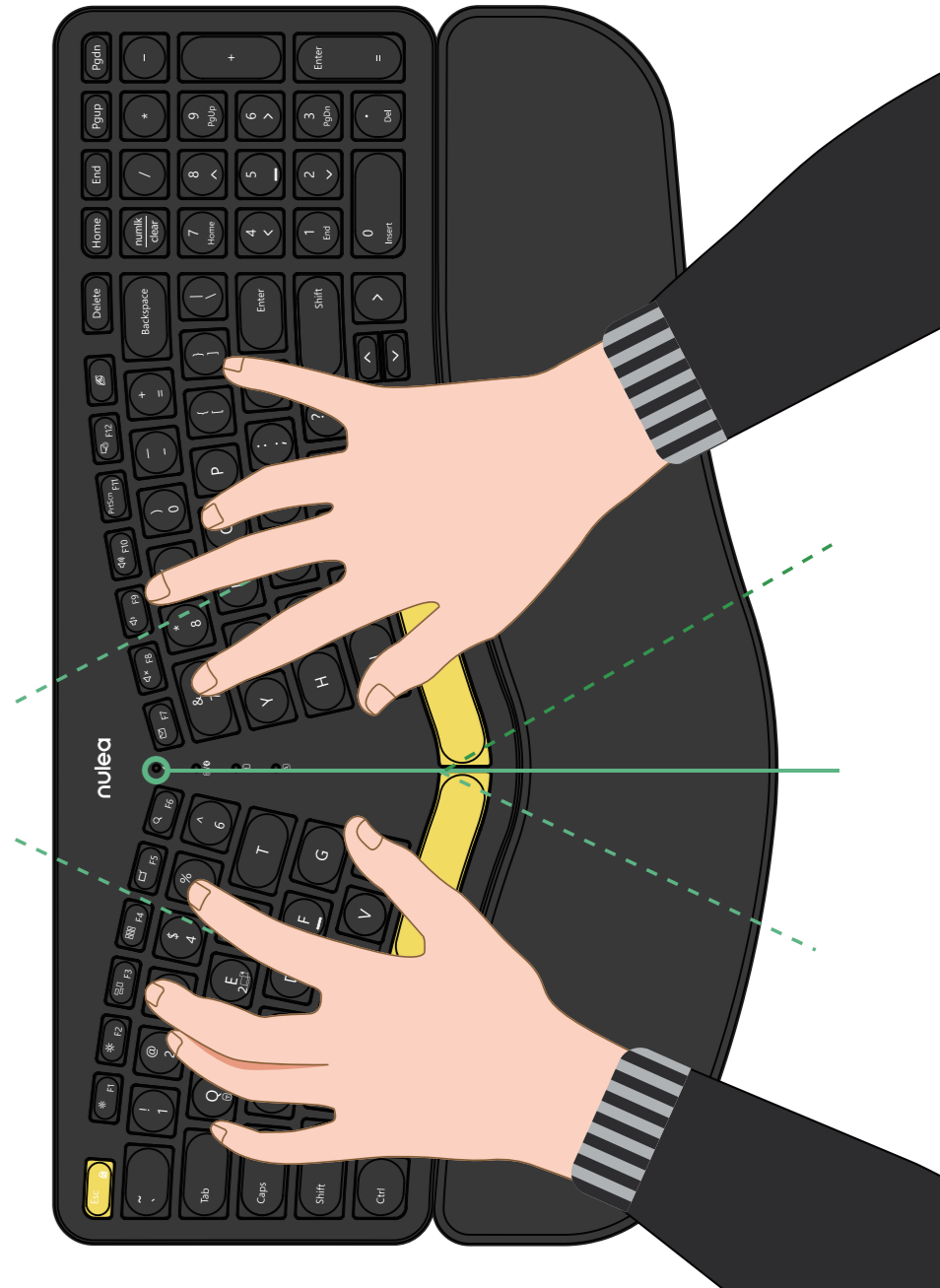
How to charge the keyboard?

1. To charge the keyboard, plug the included USB-C to USB-A cable into the keyboard and laptop respectively. (Or use a 5V/1A charger)
2. During charging, the charging indicator light is red, and the indicator light turns green when fully charged.
3. When the battery is low, the indicator light flashes red. In order not to affect the experience and function of the keyboard, please charge in time.

Q.4

If you are not used to it, please contact customer service

The ergonomic layout and keyboard curve can help solve wrist problems and make it more comfortable. We've heard from some customers that don't adapt to the layout design of the keyboard. So if you don't adapt to it, please stick with it for a while. If you still don't like it, please don't hesitate to contact our service for help.
Customer Service: support@nulea.com



Packing Contents

- * Wireless Ergonomic Keyboard
- * 2.4G USB Receiver (For 2.4G connection only)
- * USB-C Charging Cable
- * User Manual

Specification

Model: HD315
Connected by: Bluetooth & 2.4G receiver
Product Dimensions: 418.04 * 244.08 * 32.71mm / 16.5 x 9.6 x 1.3 in
Connection: 2.4G Wireless & Bluetooth
Operating Distance: 8 m / 26.2 ft
Rechargeable Lithium Battery: 2000mAh
Compatibility: Windows 2000/XP/Vista/7/8/10/11, Mac OS 10.0 above



Hardware Basics



- ① Power switch
- ② Fn Key
- ③ Power on/Charging indicator
- ④ Connection indicator
- ⑤ Num lock indicator
- ⑥ Caps lock indicator
- ⑦ Charging ports
- ⑧ Leather wrist rest
- ⑨ USB receiver

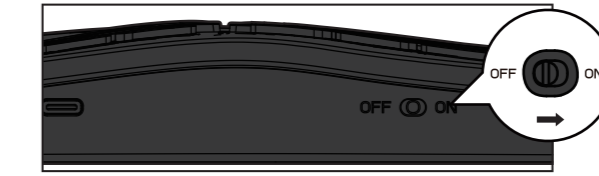
Indicators & Definition

Indicator	Icon	Color	Definition
Power on		Green	Green indicator is on for 3s then off.
Charging		Red- Green	Low battery indicator flashes red. Stay in red color when charging, and it will turn green after fully charged.
2.4G		Green	Press Fn+Q to 2.4G mode, green indicator flashes slowly.
1 st BT device		Blue	Press Fn+W to BT1, blue indicator flashes slowly.
2 nd BT device		Red	Press Fn+E to BT2, red indicator flashes slowly.
Num lock		Green	Green indicator is on.
Caps lock		Green	Green indicator is on.

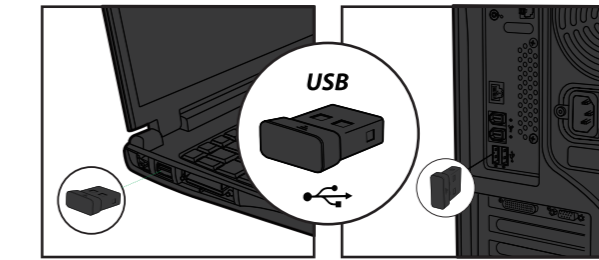
Pairing Steps

A.2.4G Connection

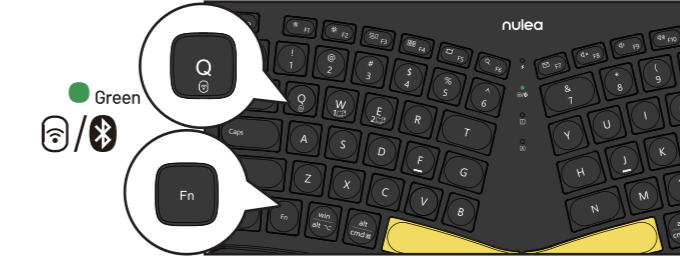
Step 1. Flip the power switch to the ON position.



Step 2. Plug the 2.4G USB receiver into the port of computer.



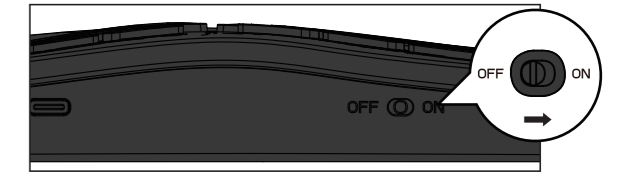
Step 3. Press "Fn+Q", the mode light will light up green and switch to 2.4G wireless mode.



B. Bluetooth Connection

Pair with 1st device

Step 1. Flip the power switch to the ON position.



Step 2. Press "Fn+W" to enter channel 1 mode.



Long press "Fn+W" for 5 seconds to enter pairing mode, Bluetooth channel 1 indicator will flash blue and start to search the available Bluetooth device.



Step 3. On your bluetooth device, find the Bluetooth name "Nulea RT05" and click to connect it.



Step 4. The status indicator will be off after successfully paired.

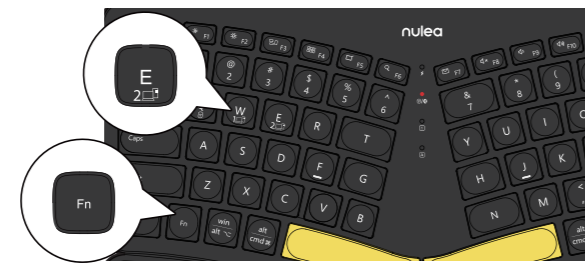


Pair with 2nd device

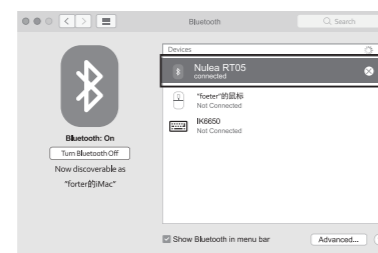
Step 1. Press "Fn+E" to enter channel 2 mode.



Long press "Fn+E" for 5 seconds to enter pairing mode, Bluetooth channel 2 indicator will flash red and start to search the available Bluetooth device.



Step 2. On your bluetooth device, find the Bluetooth name "Nulea RT05" and click to connect it.



Step 3. The status indicator will be off after successfully paired.



Indicators & Definition

Key icon	Fn on Mac	Mac	Fn on Windows	Windows
Esc	Fn lock (Switch between shortcut and F1-F12 key modes)	Esc	Fn lock (Switch between shortcut and F1-F12 key modes)	Esc
	F1	Brightness-	F1	Brightness-(Win10)
	F2	Brightness+	F2	Brightness+(Win10)
	F3	Mission control	F3	Switch Application
	F4	Switch Application	F4	Show Application
	F5	Show desktop	F5	Show desktop
	F6	Search for	F6	Search for
	F7	N/A	F7	Email
	F8	Mute	F8	Mute
	F9	Volume-	F9	Volume-
	F10	Volume+	F10	Volume+
	F11	Screenshot	F11	Screenshot
	F12	Lock screen	F12	Lock screen
	N/A	N/A	N/A	Web browser

How to change the backlight color?

Press the light adjustment button, three levels of brightness adjustable.

Press the light adjustment button and the up or down buttons to adjust the backlight color.



Switch color: Blue/Green/Red/Cyam/Purple/Yellow/White



Why is the backlight turned off?

The backlight turns off below 10% battery to conserve power. The red indicator light flashes every second. If there's no activity for 10+ seconds, the flashing stops. Below 3.0V, the light flashes for 10 seconds before shutdown. The backlight won't reactivate at low power.

Sleep Mode

The keyboard will enter sleep mode if idle for 30min. To save keyboard power, if you don't use the keyboard, the keyboard backlight will go into sleep mode after three minutes. Press any key to exit sleep mode.

Charging

Low battery indicator flashes red, in order not to affect the experience and function of the keyboard, please charge in time. Step 1. Connect one end of the included type-c cable to a USB charger, and connect the opposite end to the charging slot on the keyboard. (Note: Output: DC 5V / 1A; USB charger is not included)

Step 2. The charging indicator will glow red while the keyboard is charging. The indicator light turns green when fully charged. A full charge takes approximately 4 hours.

FCC ID Statement

Any changes or modifications not expressly approved by the party responsible for compliance could void the user's authority to operate the equipment. This device complies with part 15 of the FCC Rules. Operation is subject to the following two conditions: (1) this device may not cause harmful interference, and (2) this device must accept any interference received, including interference that may cause undesired operation.

FCC Radiation Exposure Statement:

This equipment complies with FCC radiation exposure limits set forth for an uncontrolled environment.

Correct Disposal of This Product

(Waste Electrical & Electronic Equipment) This Marking shown on the product or its literature, indicate that it should not be disposed with other household wastes at the end of its working life.

To prevent possible harm to the environment or human health from uncontrolled waste disposal, please separate this from other types of wastes and recycle it responsibly to promote the sustainable reuse of material resources. Household user should contact either the retailer where they purchased this product or their local government office, for details of where and how they can take this item for environmentally safe recycling.

Business users should contact their supplier and check the terms and conditions of the purchase. This product should not be mixed with other commercial wastes for disposal.

The Bluetooth word mark and logos are registered trademarks owned by the Bluetooth SIG, Inc. and any use of such marks by Nulea is under license. Other trademarks and trade names are those of their respective owners.

UK	REP	CET PRODUCT SERVICE LTD. Beacon House Stokenchurch Business Park, Ibstone Rd, Stokenchurch High Wycombe HP14 3FE UK Email: info.cetservice@gmail.com Phone: +447419325266
EC	REP	UAB Qixiang Europe Pranciškonų g. 6-46, LT-01133 Vilnius, Lithuania Technical Information Center Trakehner Str. 7-9, 60487 Frankfurt am Main, Germany Email: qixiang.europe@gmail.com Phone: +496976895074