

35C

TRUCKY 35

With its **low and wide profile**, this robust ETR (Easy Tubeless Ready) rim is suitable for 2.6" to 2.8" tires for **e-MTB or cargo e-bikes**.

Avec son profil bas et large à la fois, cette jante robuste et ETR (Easy Tubeless Ready) convient aux pneus de 2.6" à 2.8" pour les VTT-AE ou cargo VAE.

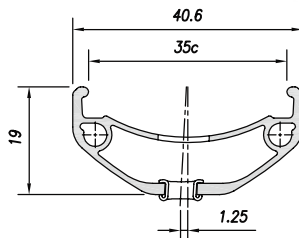


OPTIONS



Black eyelets
13G Drilling

Stickers branded



19 / 35C

DISC BRAKE ONLY

ALLOY 6063T6

● Black sandblast

Dimension	ETRTO	Tyre section	Weight (g)	ERD	Holes	Eyelets	CNC
27.5"	584 x 35C	58 - 71	710	562	32 / 36	SINGLE	-