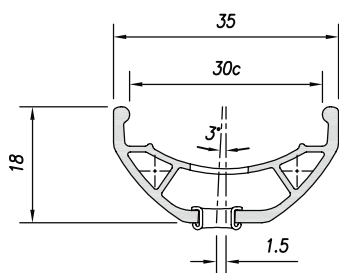


30C

TRUCKY 30

A **robust rim adapted to wide tires**, designed for **intensive urban or sport use**. ETR (Easy Tubeless Ready) mounting is ideal for e-MTB, and good tire fit even at low pressure.

Une jante robuste et adaptée aux pneus larges, conçue pour des utilisations intensives urbaines ou sportives. Montage ETR (Easy Tubeless Ready) idéal pour le e-VTT, et bonne tenue du pneu même à faible pression.



OPTIONS



Black eyelets

13G Drilling



Laser model*

Laser branded*

Stickers branded

*only available with Black anodizing

18 / 30C

DISC BRAKE ONLY

ALLOY 6063T6

● Black sandblast

● Black anodizing
only available in 27,5" & 29"

Dimension	ETRTO	Tyre section	Weight (g)	ERD	Holes	Eyelets	CNC
29"	622 x 30C	47 - 71	685	601	32 / 36	SINGLE	-
27.5"	584 x 30C	47 - 71	640	564	32 / 36	SINGLE	-
26"	559 x 30C	47 - 71	615	539	32 / 36	SINGLE	-
NEW 24"	507 x 30C	47 - 71	560	487	32 / 36	SINGLE	-
20"	406 x 30C	47 - 71	445	386	32 / 36	SINGLE	-