

25C

MAXX

A wide and flexible rim, designed for **Enduro and All-mountain use** and equipped with our ETR (Easy Tubeless Ready) system.

Une jante large et souple, conçue pour une utilisation Enduro et All-mountain et dotée de notre système ETR (Easy Tubeless Ready).



ETR EASY
TUBELESS
READY

OPTIONS

WIDE
ANGLE
SYSTEM

Black eyelets

LASER
DESIGN

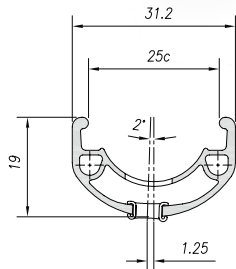
Laser model
Laser branded
Stickers branded

● Black anodizing

19 / 25C

DISC BRAKE ONLY

ALLOY 6063T6



Dimension	ETRTO	Tyre section	Weight (g)	ERD	Holes	Eyelets	CNC
29"	622 x 25C	28 - 65	660	602	32 / 36	SINGLE	-
27.5"	584 x 25C	28 - 65	620	563	32 / 36	SINGLE	-