

23C

KLIXX

A versatile rim, ensuring a good weight/stiffness compromise and adapted to **MTB or city bikes**; it is easily mounted in tubeless-ready.

Une jante polyvalente, assurant un bon compromis poids / rigidité et adaptée aux VTT ou vélos urbains ; elle se monte facilement en tubeless-ready.



ETR EASY
TUBELESS
READY

OPTIONS

WIDE
ANGLE
SYSTEM

Black eyelets
13G Drilling

LASER
DESIGN

Laser model*
Laser branded*
Stickers branded

*only available with Black anodizing

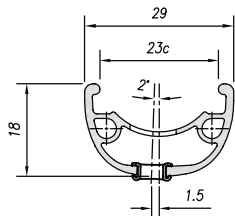
18 / 23C

DISC BRAKE ONLY

ALLOY 6063T6

● Black anodizing

▲ Black painting **NEW**



Dimension	ETRTO	Tyre section	Weight (g)	ERD	Holes	Eyelets	CNC
29"	622 x 23C	25 - 65	620	602	32 / 36	SINGLE	-
27.5"	584 x 23C	25 - 65	580	564	32 / 36	SINGLE	-
26"	559 x 23C	25 - 65	560	538	32 / 36	SINGLE	-
24"	507 x 23C	25 - 65	510	487	32 / 36	SINGLE	-
20"	406 x 23C	25 - 65	410	385	32 / 36	SINGLE	-