

25C

KARGO

A rim specially **developed for MTB, cargo bikes and longtail bikes**. Supporting heavy loads, with a system weight of **250 kg**, this model offers **strength and safety**.

Une jante spécialement développée pour les VAE, vélos cargo ou longtail. Supportant de fortes charges, avec un poids système de 250 kg, ce modèle offre solidité et sécurité.



OPTIONS

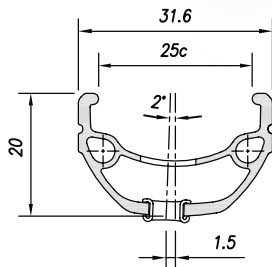


Black eyelets
13G Drilling



Laser model*
Laser branded*
Stickers branded

*only available with Black anodizing



20 / 25C

V-BRAKE or DISC BRAKE

ALLOY 6063T6

- Black anodizing
- Silver anodizing
only available in 24" & 20"

Dimension	ETRTO	Tyre section	Weight (g)	ERD	Holes	Eyelets	CNC
28"	622 x 25C	28 - 65	650	599	32 / 36	SINGLE	OPTION
27.5"	584 x 25C	28 - 65	620	561	32 / 36	SINGLE	OPTION
26"	559 x 25C	28 - 65	590	535	32 / 36	SINGLE	OPTION
24"	507 x 25C	28 - 65	530	484	32 / 36	SINGLE	OPTION
20"	406 x 25C	28 - 65	420	382	32 / 36	SINGLE	OPTION