

# 23C

## FZR-XC

**Light weight and performance** for this ETR (Easy Tubeless Ready) rim, specifically designed for **cross-country**.

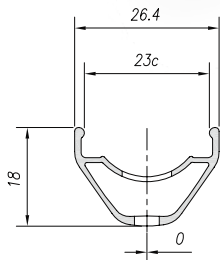
Poids plume et performance pour cette jante manchonnée et ETR (Easy Tubeless Ready), spécifiquement conçue pour le cross-country.



### OPTIONS



Laser model  
Laser branded  
Stickers branded



**18 / 23C**

DISC BRAKE ONLY

ALLOY 6063T6

● Black anodizing

Dimension	ETRTO	Tyre section	Weight (g)	ERD	Holes	Eyelets	CNC
<b>29"</b>	622 x 23C	25 - 65	400	601	32	-	-
<b>27.5"</b>	584 x 23C	25 - 65	380	562	32	-	-

#### RESTRICTIONS ON USE:

Maximum system weight: 100kg - Maximum spokes tension: 1300nm - Maximum tyre pressure: 3.5 bars/50 PSI