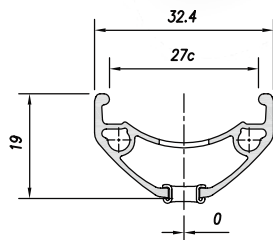


27C

CROSS-R 27

A **good mix of stiffness and weight** for this dynamic rim, with a racy design. Equipped with ETR technology, it is suitable for **MTB or urban e-bikes** and is also available in 23c width.

Un bon mix rigidité / poids pour cette jante dynamique, au design racé ; dotée de la technologie ETR, elle convient aux usages VTT ou VAE urbains et se décline également en largeur 23c.



ETR EASY
TUBELESS
READY

19 / 27C

DISC BRAKE ONLY

ALLOY 6063T6

● Black sandblast

OPTIONS

WIDE
ANGLE
SYSTEM

Black eyelets

Stickers branded

| Dimension | ETRTO | Tyre section | Weight (g) | ERD | Holes | Eyelets | CNC |
|--------------|-----------|--------------|------------|-----|---------|---------|-----|
| 29" | 622 x 27C | 35 - 65 | 620 | 600 | 32 / 36 | SINGLE | - |
| 27.5" | 584 x 27C | 35 - 65 | 590 | 561 | 32 / 36 | SINGLE | - |