

23C

CROSS-R 23

A **good mix of stiffness and weight** for this dynamic rim, with a stylish design; equipped with ETR technology, it is suitable for **MTB or urban e-bikes** and also exists in **27c**.

Un bon mix rigidité / poids pour cette jante dynamique, au design racé ; dotée de la technologie ETR, elle convient aux usages VTT ou VAE urbains et existe aussi en largeur 27c.

ETR EASY
TUBELESS
READY

OPTIONS

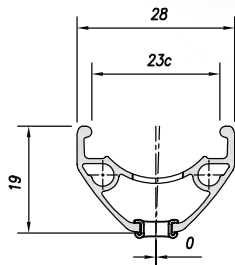
Black eyelets
Stickers branded

● Black sandblast

19 / 23C

DISC BRAKE ONLY

ALLOY 6063T6



Dimension	ETRTO	Tyre section	Weight (g)	ERD	Holes	Eyelets	CNC
29"	622 x 23C	25 - 65	550	599	32 / 36	SINGLE	-
27.5"	584 x 23C	25 - 65	520	561	32 / 36	SINGLE	-