

NeoRuler GO

QUICKSTART GUIDE

Model : G01 | Ver:1.0



Press Both Buttons to Turn On the Device

Basics

Charging Indicator

Orange: Charging
Blue: Fully charged

Screen

Main/Measure Button

Switch Button
Long Press to switch Functions

Laser Line Emitter

Measure Wheel



Pull out the key ring to use the Type-C charging port.



Power input:5V-1A, Battery:300mAh

Materials Aluminum Alloy, ABS/PC/TPU

Accuracy $\pm 1/32$ in (± 1 mm)* $+(D \times 0.5\%)$ In Ideal Circumstances

Range 5 digits before the decimal point

Laser 635nm(Red Cross Laser)

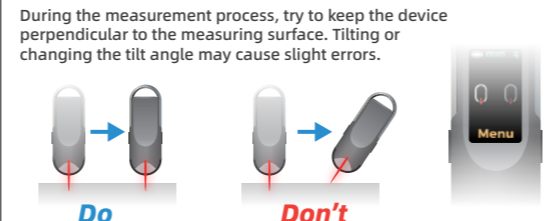
Scales 93 built-in scales in 8 modes +Customized Scales

Getting started - Ruler

Click the main button (left), after seeing the guide animation, roll the device on a flat surface to measure. The device should be perpendicular to the measuring surface. Align the rolling direction with the horizontal laser line, keeping a straight line. Use the vertical laser line to locate the start and end points.

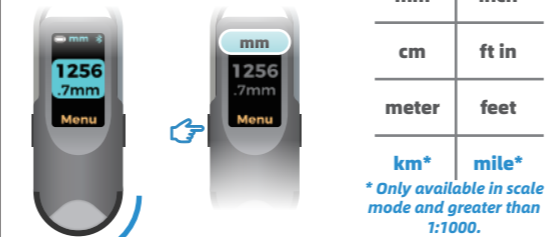


Click to Start Measuring, Stop Moving to End.
Or Press and Hold to Start, Release to End.



Change units

Before or after measurement (when the value is displayed in a blue box and the cross laser is off), control the wheel to switch to the unit option, and click the main button (left) to change the measurement unit.

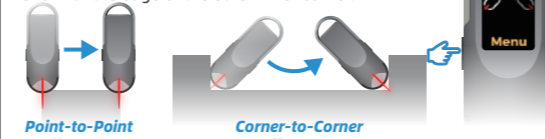


mm	inch
cm	ft in
meter	feet
km*	mile*

** Only available in scale mode and greater than 1:1000.*

Switch alignment mode

When the animation is played, click the switch button (right) to switch the measurement mode to Corner to Corner mode. This mode is suitable for measuring the distance between two inner corners. At the start of the measurement, tilt the device 45 degrees, align the laser line with the edge of the inner corner, swing the device, end with the edge of the other inner corner.



Switch Functions

After the measurement is completed, long press the switch button (right) to access function menu.

Measure Curves

For the most accurate results, hold the device as stably and precisely as possible. In point-to-point mode, keep the device perpendicular. In corner-to-corner mode, tilt it at a 45-degree angle. When measuring curves and arcs, align the edge of the wheel with the curve to be measured and use ONLY the vertical laser line to determine the start and end points. Do not align the laser crossline with the curves to be measured, nor use the horizontal laser line as a reference. Laser crossline with the curves to be measured, nor use the horizontal laser line as a reference.

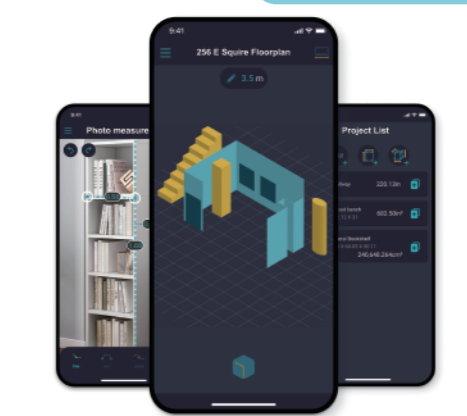


Send Measurement to the MEAZOR APP

After connecting the product to the MEAZOR APP, click the main button to automatically send the measurement dimensions to the APP after completing the measurement. The app also allows for switching the dominant hand, adding new scales, measurement calibration, and other advanced functions. For specific functions, please download the app from your mobile application store to explore.



MEAZOR APP 2.0 **Free for Lifetime**



Available on the **App Store** and **Google Play**

ONLINE USER INSTRUCTIONS

Access to detailed multilingual instruction manuals, FAQ & Instruction videos in:
English | Chinese | Japanese | German | Spanish | Italian | French



Copyright

The above product specifications are subject to change without notice. All rights of interpretation are reserved by HOZO DESIGN CO. All trademarks, images, technical data, and intellectual property rights are the properties of HOZO DESIGN CO., Limited and are subject to copyright infringement.



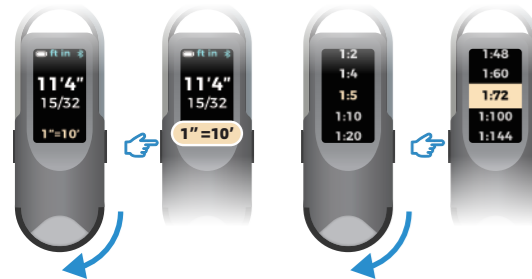


Scale Ruler

Choose from 93 standard scales. Use the wheel to measure on a scaled drawing. Use the Laser line for auxiliary positioning.

Change Scales

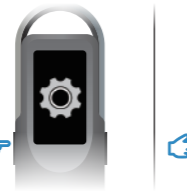
After the measurement is completed, control the wheel to switch to the scale option, and click the main button (left) to enter the scale selection interface. In the scale interface, control the wheel to select the scale, and click the main button (left) to confirm the scale.



Based on common use and industry standards, we have grouped the 93 scales into 8 modes. You can switch between these scale modes in the settings menu.

Switch Scale Mode

After entering the settings interface, control the wheel to switch to scale selection. Click the main button (left) to enter, and control the wheel to select the scale mode. You can switch between the 8 scale modes, and see the specific scales in the table: Confirm the scale.



41 Built-in Metric Scales				52 Built-in US Standard Scales			
MT-Arch	MT-ENG I	MT-ENG II	MT-MAP	US-Arch	US-ENG I	US-ENG II	US-MAP
$\sqrt{1}$				$T = T$			
$\sqrt{2}$	$\sqrt{25}$	$\sqrt{100}$	$\sqrt{100k}$	6" = T	T' = 10'	T' = 300'	T' = 1 Mi
$\sqrt{3}$	$\sqrt{150}$	$\sqrt{250}$	$\sqrt{250k}$	4" = T	T' = 20'	T' = 333'	T' = 15 Mi
$\sqrt{4}$	$\sqrt{200}$	$\sqrt{500}$	$\sqrt{200k}$	3" = T	T' = 30'	T' = 416.6'	T' = 2 Mi
$\sqrt{5}$	$\sqrt{250}$	$\sqrt{625}$	$\sqrt{250k}$	2" = T	T' = 40'	T' = 500'	T' = 3 Mi
$\sqrt{10}$	$\sqrt{300}$	$\sqrt{2000}$	$\sqrt{500k}$	1 1/2" = T	T' = 50'	T' = 583.3'	T' = 4 Mi
$\sqrt{20}$	$\sqrt{400}$	$\sqrt{2500}$	$\sqrt{1000k}$	T' = T	T' = 60'	T' = 600'	T' = 5 Mi
$\sqrt{25}$	$\sqrt{500}$	$\sqrt{5000}$	$\sqrt{2000k}$	3/4" = T	T' = 70'	T' = 625'	T' = 6 Mi
$\sqrt{30}$		$\sqrt{6000}$	$\sqrt{2500k}$	1/2" = T	T' = 80'	T' = 666'	T' = 10 Mi
$\sqrt{40}$		$\sqrt{10k}$		3/8" = T	T' = 83.3'	T' = 750'	T' = 20 Mi
$\sqrt{50}$		$\sqrt{12.5k}$		1/4" = T	T' = 90'	T' = 1000'	T' = 24 Mi
$\sqrt{72}$		$\sqrt{20k}$		3/16" = T	T' = 100'	T' = 1200'	T' = 25 Mi
$\sqrt{75}$		$\sqrt{25k}$		1/8" = T	T' = 166.6'	T' = 2000'	
$\sqrt{100}$		$\sqrt{50k}$		3/32" = T	T' = 200'	T' = 3000'	
				1/16" = T	T' = 250'		



Customized Scale Ruler

Use this feature when drawings are off-scale or in non-standard scales. The device can calculate the measuring scales based on inputted lengths.



$$\text{Scale} = d \div D$$

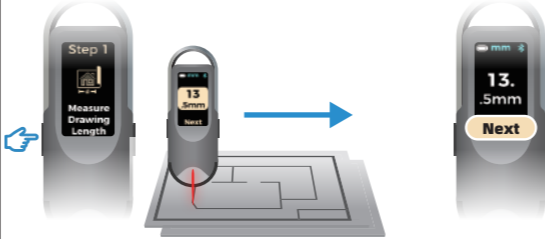
How to Setup?

After the measurement is completed in custom scale mode, control the wheel to switch to the scale option, click the main button (left) to enter the custom scale setting. In this interface, follow the guide to first measure the drawing, and then measure the actual object to complete the custom scale setting.



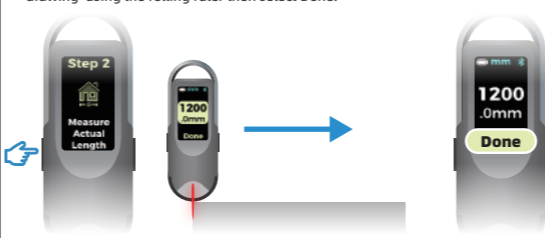
Step 1: Measure Drawing Length

Measure the length on the drawing using the rolling ruler then select Next.



Step 2: Measure Actual Length

Measure the actual length of the object corresponding to the drawing using the rolling ruler then select Done.



Setting

In the settings interface, use the wheel to operate the menu options. Use the main button (left) to confirm the options.



Screen Direction

You can set the screen display to horizontal/vertical according to personal habits.



Handedness

You can change the dominant hand to left hand according to personal habits. In left-hand mode, the direction of the main button (left) and switch button (right) is reversed.



Scale mode

Choose one of the 8 industry-standard scale modes to use. See the table on the left for details.



Product Information

Learn about the product firmware version number, or restore factory settings.

Set using the MEAZOR APP

After connecting the device in the MEAZOR APP, there are more setting functions available in the "Control Panel", such as saving custom scales, setting sleep time, and device calibration.

Calibration

The product is precisely calibrated before shipping. If re-calibration is required after a period of normal wear, please download the MEAZOR APP and connect the device, and follow these steps to re-calibrate.



Preparation: Standard ruler (greater than 30cm/12in)

Recommended to use a 24inch/60cm steel ruler. Not recommended to use a tape measure for calibration.

Reset

Step 1: Restore factory settings

Enter the settings interface - product information, select Reset to restore factory settings.

GO

Step 2: Enter the control panel of the MEAZOR APP

After connecting the device with the APP, enter the device control panel, and click "Advanced Settings" at the bottom. Click to start calibration.

Step 3: Use the device to measure the length of the ruler

Use the device to measure the length of the ruler (it is recommended to measure 3-4 times and take the median value) and enter it, then click next.

Step 4: Enter the actual length of the ruler

Enter the actual length of the ruler, and click next, then confirm. Calibration is complete.

Warranty

Warranty period
HOZO Design. CO. - One-year Limited Consumer Warranty covers your product against manufacturing defects for one year from the date you bought your product.

How to send it for repair
If the product needs to be repaired, please contact the distributor and send the product accordingly, and provide a valid batch number with proof of purchase.



Support Email: customersupport@hozodesign.com
Online Form: hozodesign.com/pages/support-center

Special cases

- The following cases are not covered by the warranty policy during the warranty period and will be repaired at extra cost.
- 1) Damage caused by improper use, maintenance, or storage by the user.
 - 2) Dismantling of parts under unauthorized circumstances.
 - 3) No proof of purchase.
 - 4) The serial number does not correspond to the product sent for repair or has been altered.
 - 5) Damage to the body caused by force majeure.
 - 6) Normal wear and tear of the parts, which need to be replaced.
 - 7) Damage caused by abnormalities in the temperature/humidity of use or storage.
 - 8) Damage to the battery caused by not charging in accordance with the instructions.
 - 9) Any damage caused by not following the instructions.