

### A little HISTORY

Nathalia and District developed along the banks of the Broken Creek. In dry conditions the creek reverted to a series of water holes.

Along the banks of the creek is ample evidence of a much earlier history. There are numerous scar trees, middens and camp sites. The ephemeral creek was used in a similar way to our roads and highways. The environment was entirely different to what we have today.

**1878:** The creek was entirely dry and settlers built dirt banks to retain enough water for stock and domestic use. In the **early 1900's** the Shire began building wooden weirs and the final weirs were built in the **late 1930's**.

**1938:** The Broken Creek went dry for the last time. With farmers' donations and a government grant, water was pumped upstream from Rice's Weir into Kennedy's and Schiers weirs. The water reached back to James Bridge.

**1942:** Irrigation water was diverted from the Goulburn River at Casey's Weir, water rights were granted and large-scale irrigation began. From this time an altered eco-system has evolved and we have abundant flora, fauna and fish, which have adapted to suite the permanent water conditions. The Broken Creek is considered one of the most significant breeding streams for the Murray Cod. Communities have also adapted and now town's folk rely on this water supply as much as the farmers.

*There are no bins provided along the drive. Please take all your rubbish home.*

*Please observe all road laws and drive according to the road and weather conditions.*

This publication may be of assistance to you, but we do not guarantee that the publication is without flaw or is wholly appropriate for your particular purposes and therefore disclaims all liability for any error, loss or other consequence which may arise from you relying on any information in this publication.

*We would like to acknowledge the support of the following:*

- Moira Football Club Investment Fund
- Broken Creek Improvement Landcare Group
- Nathalia Tree Group
- Goulburn-Murray Landcare Network
- Goulburn-Broken Catchment Management Authority
- Parks Victoria
- DEWLP
- Western Moira Tourism



*This drive has been developed by the Nathalia and District Local Area Plan Implementation Committee. (2005) (Under the auspice of Goulburn Murray Landcare Network)*

# BROKEN CREEK DRIVE

**Approx: 58km**  
**Allow about**  
**2 hours**  
**for the**  
**return trip**

# BROKEN CREEK DRIVE ONE

Set your meter to 0km on the Town Bridge

**At the bridge in Nathalia head North.**

**0.6km** Railway Crossing – This is part of the old railway from Nathalia to Picola. You are in the Parish of “Barwo”

**1.7km** Bushland Reserve – It contains rare Black Box and Lignum

**2.5km** Turn left into Nathalia-Echuca Road.

**3.0km** Picnic Point Reserve – The early townspeople would travel here for the local church picnics (both sides of the creek)

**3.5km** Seed Orchard – established in 1995 by the Broken Creek Improvement Landcare Group. Seed collected from this site is used for revegetation works.

**5.5km** There are deep holes along this stretch. These were the water source when the creek stopped running. The Broken Creek is one of the most significant breeding habitats for the endangered Murray Cod. Note the willow tree eradication program along this section.

**6.4km** Follow the dirt road around to your left keeping the creek on your left.

**6.5km** Balls /Magnusson’s Weir – In 1878 the creek was entirely dry & there was talk of a scheme to divert water from the Broken River. This began the weir system along the creek. Part of the old weir is still visible. When the new weir was built the fishways were incorporated into the creek.

**6.6km** Barwo Railway Station Site. (on right)

**7.1km** Grey Box Woodland area – note the Flax Lily (*Dianella revoluta*) and the moss/lichen - this leads into Red Gum/lignum area and then into a Buloke area. This is a very diverse section.

**8.5km** Snugborough Homestead – On your right you can see the remains of the garden (cacti).

**9.0km** The low sections in this area are prior streams of the old Goulburn River course and have formed sandhills.

**9.3km** On your right is a stand of Murray Pine (*Callitris glaucophylla*), once common in this landscape.

**10.0km** Corner of O’Hare’s and Murray Road.

**Recommended loop to Bourke’s Bridge** (approx. 3km) *To do the loop, turn Left and approx. ½km along you will pass through the old creek bed (low area). Continue on to Luckes’ Weir – this is an area of significant vegetation Emu Bush (Erenophila longifolia) and Maille Bush Pea (Eutaxia microphylla prostrate). You are 99m above sea level. Follow the road along the creek. On your left is excellent Bush Stone Curlew habitat. In the Peppercorn trees on your right is a plaque to commemorate members of the Bourke family buried here during an epidemic. Drive on to Bourke’s Bridge. It is named after original settlers – descendants are still in the area today. Turn around at the bridge and retrace the road to the corner of O’Hare’s Road.*

**Back to the basic drive:** Turn right (North) at O’Hare’s Road – along this stretch it is easy to see the prior stream beds. You are now entering the parish of “Narioka”.

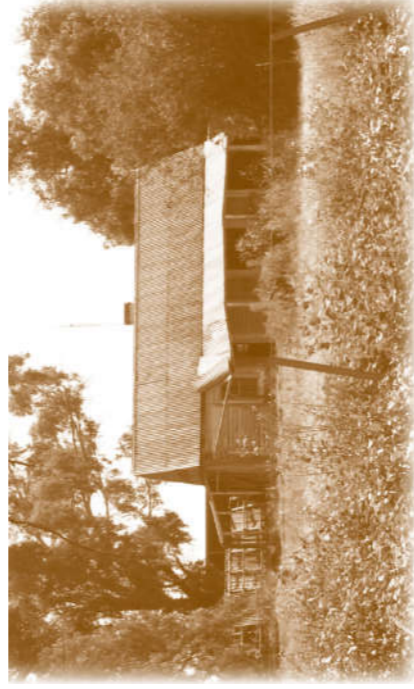
**11.1km** Turn left into Lindsay’s Road. – There are quite a few farmers’ private tree plantations along here.

**13.0km** Follow the road to the right.

**13.3** Fairman’s Bridge - *You may choose to go to Picola from here. Toilets available. To do this, turn right and continue straight ahead for approx. 3km. (North)*

To continue the drive, cross the Picola Road (a little dog-leg) and stay on Lindsay’s Road. There was a hand pump here for Picola residents to fill their Furphy carts prior to the town water supply. Looking across the creek a little further down stream you will see an indentation where there was a dirt weir and the dip is from water washing around the structure.

**13.8km** Fenced Wattles- this area contains Notable Wattle (*Acacia notabilis*), scented Matt Rush or Cocky’s Bootlace (*Lomandra*



**Snugborough Homestead**

# BROKEN CREEK DRIVE TWO

**Set your trip meter to 0 km again.**

*You may choose to go to Barmah from here. (Approx. 3km) Toilets, food and fuel are available. To do this simply remain on the bitumen and follow the road straight through to Barmah.*

**Turn left immediately after you cross Maloney’s Bridge into Barmah East Rd.**

**0.9km** Stooked haystacks. The Chandler family still work Clydesdale horses in the “old way”. You are in the Parish Of “Moira”.

**2.0km** In the creek there was a punt crossing used when the creek was in flood, note the cutting in the opposite bank. There was also a market garden here for many years.

**2.5km** Barmah East –this was quite a large settlement, spread out over the next kilometre. There was a School (1876), Church (1877), Wine Palace, Saleyards, Sporting Clubs and Blacksmith. These will be identified as you travel along.

**2.6km** Forestry Block –on your right - this is now a Bushland Reserve. Turn right at the corner.

**2.7km** Wright’s Bridge – The building at the bridge is on the site of Barmah East Wine Palace also known as Quinn’s Criterion Refreshment Rooms (Licensed in 1892) it also had a commercial Blacksmith, Butcher and Saleyards.

**3.3km** Old Moira sports ground. Football Club (early 1900’s) - Moira and Narioka Football Clubs combined in 1906; Tennis Club (1910); Sports Association (1931– 1957)

**3.8km** Turn left into Hardings Road. Kennedys Weir is directly in front of you. The new weir is built in the original creek bed. When the dirt banks were built there was a furrow dug for overflow. It washed out and became the “New Creek”.

**4.2km** On the right – this was a changing station for the mail coach. Watch for water birds, especially pelicans along the creek. There are lots of horseshoe bends in this section of the creek.

**5.2km** Ferrari’s Vineyard and Winery operated here in 1893. Under the shearing shed/barn is an earthen cellar. Dances and concerts were held in the barn. You are now entering the Parish Of “Narioka”.

**6.9km** Spray Irrigation System Installed in 2002.

*effusa* ), Flax Lily (*Dianella revoluta* ), Leafless Templetomia (*Templetonia stenophylla*). This section is yellow-box woodland. Look for plantations on farms which provide foraging habitat for the endangered Superb Parrot.

**16.9km** Narioka Recreation Reserve - Home of Narioka Tennis Club (1909); Gun Club; Cricket Club (1900); Football Club (1900); also Moira Football and Basketball Clubs from 1946. The trees were planted in 2000.

**18.7km** Remnants of a dirt weir can be seen – a series of islands remain.

**19.5km** Light Wood Wattles (*Acacia implexa*) on your left.

**19.8km** James Bridge - don’t cross the bridge. Turn right keeping the creek on your left. The significant remnant vegetation area along here is home to a colony of Sugar Gliders. (*Petaurus breviceps*)

**21.3km** Turn left into Kennedy Road. Farms along here grew tobacco just prior to WW2.

**23.3km** Schier’s Weir – the old building on the right is Schier’s Creamery.

**23.6km** Turn right into Boal’s Road. You are now entering the Parish of “Moira”.

**25.6km** Crow Plain (on your right). This is part of Green Swamp, which fills in wet years.

**26.0km** Black Box Road Reserve.

**26.1km** Turn left into Barmah Road. See the great remnant vegetation in this section. It is also Grey Crowned Babbler and Bush Stone Curlew habitat.

**28.2km** Veer right along the bitumen following the main Barmah Road.

**31.4km** Cemetary Bridge (also know as Maloney’s Bridge) – Note Superb Parrot plantation. This area also supports a Bush Stone Curlew population.

**17.4km** Turn right into Fairman’s Road.

**18.5km** Turn left into Hardings Road. When you reach the creek, turn right. This is the school bus route. Once again notice the wonderful bird habitat.

**20.9km** Turn right - You are now entering the Parish of “Barwo”.

**21.4km** Turn left.

**22.0km** Site of the Barwo School. In this area is also the last remaining Moonah (*Melaleuca lanceolata*) tree in the area. Just further along is a significant bird breeding area – you can see the nesting boxes.

**22.8km** At this bend there was a private crossing.

**23km** Turn left into Dillon’s Lane and follow the road back to Nathalia.

**26km** Nathalia. We hope you enjoyed your trip.

*The Nathalia & District Local Area Plan Implementation Committee, the Broken Creek Improvement Landcare Group (both now Goulburn Murray Landcare Network) and the Superb Parrot Project, Picola, have combined to provide the information for the drive.*

**Broken Creek Improvement Landcare Group**

The Broken Creek Improvement Landcare Group was established in 1995. The members are committed to maintaining and improving the health of the Broken Creek and surrounding farmlands. The Group’s aim is to preserve the quality of the Broken Creek so that it can be enjoyed with confidence, by those that wish to use its many attributes, and who’s environment is respected and improved by the community and authorities that are charged with its care. This group is in recess as of 2017.

**Superb Parrot Project - Picola**

The Superb Parrot Project was established in 1992 to protect and enhance remnant Box-Woodland the primary feeding grounds of the endangered Superb Parrot. The Superb Parrot nests in the Red Gums of the Barmah Forest with the young fledging late spring. The annual count takes place in November each year. The group consists of 50 farming families and community members who work together to plant and direct seed local native species to provide critical foraging habitat.

