

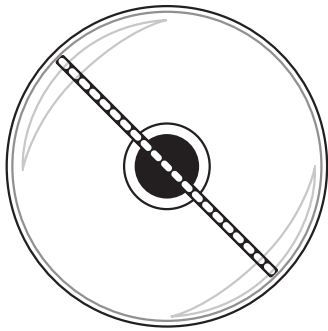
# HELLO! TOTEM



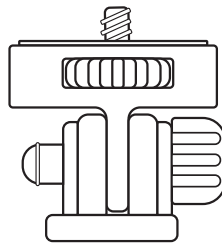
Hello! Congratulations on your purchase with Hello Totem. "In order to properly assemble and use this product, please follow this quick guide. We also highly recommend watching our short assembly video: <https://youtu.be/-Amm5NxlkNU>

## I. Package Contents

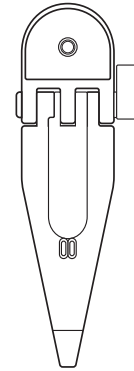
1x 3D Fan



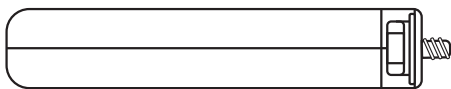
1x Fan Attachment



1x Desk Stand



1x Tripod Base

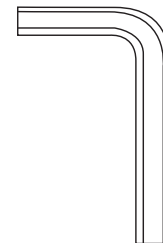
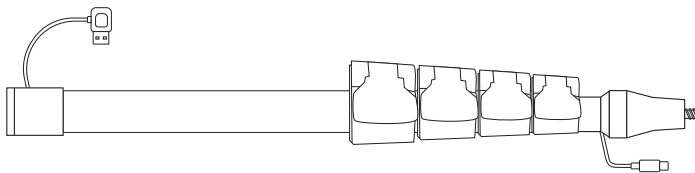


NOTE: Please use Tripod Wrench to tighten before each use.

2x Battery Hand Grip



1x Power Pole w/ built in USB C    1x Tripod Wrench



1x Desktop Stand USB



1x Battery Grip AC



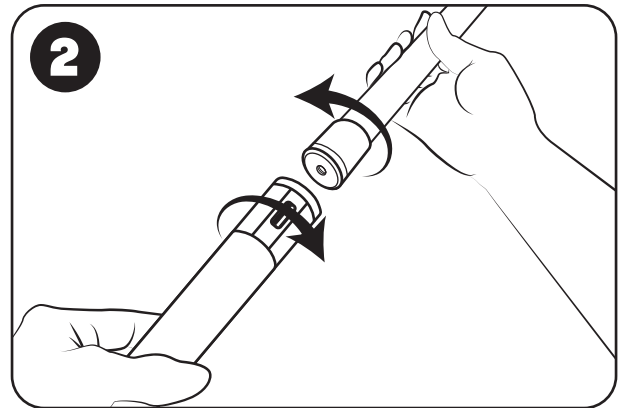
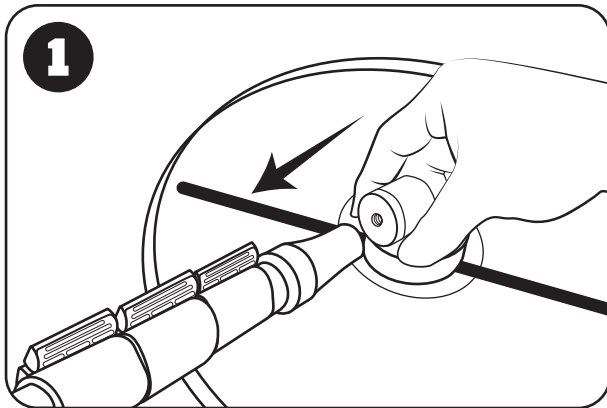
1x Battery Grip USB



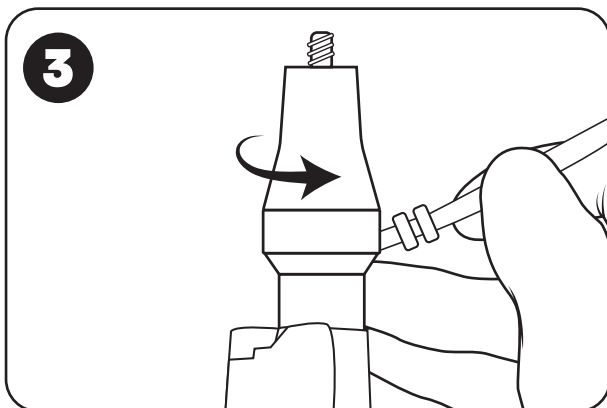
## II. Assembly

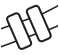
WE HIGHLY RECOMMEND that you watch our How To/Assembly Video on the link provided below!

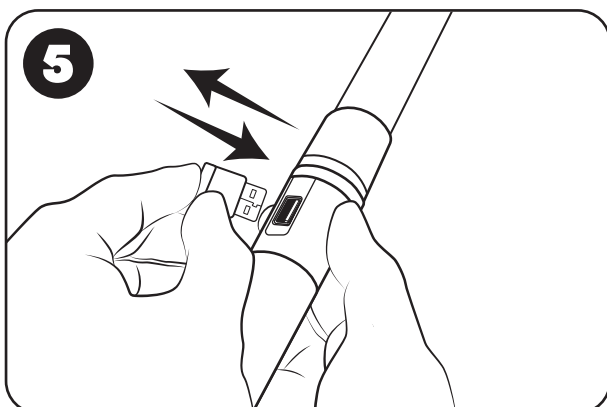
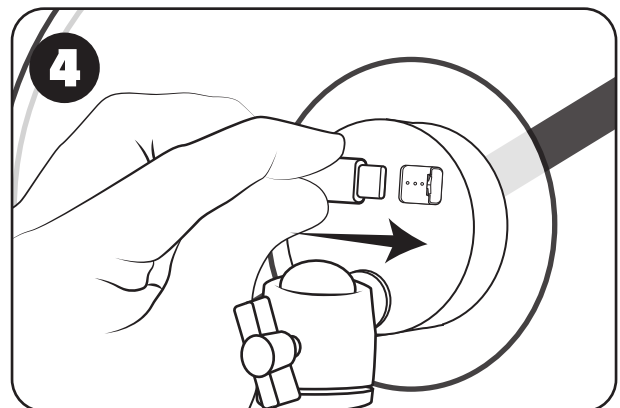
Video link: <https://youtu.be/-Amm5NxlkNU>



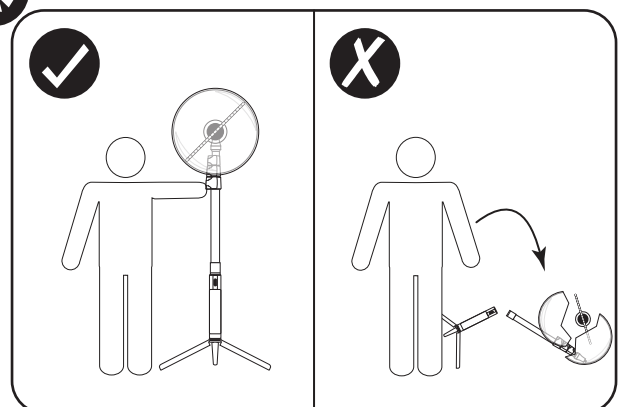
\*Do not overtighten battery



\*Please make sure  is visible outside after screwing the top piece on

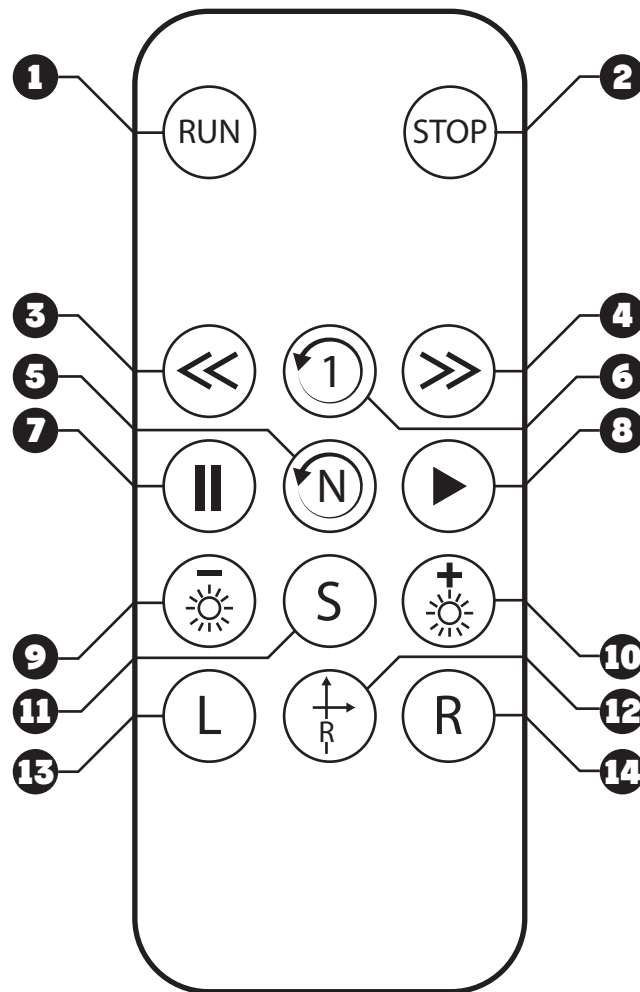


**PLEASE READ:** Since batteries are brand new, to power up you may need to build a charge. To do this, insert the USB A plug in and out of the battery port very quickly twice, and then you should see your totem power on! Use the remote to change graphics or the SmartApp!



**NOTE:** Do not leave the totem unattended, always have a hand on it!

### III. Remote



- |                                   |                               |
|-----------------------------------|-------------------------------|
| <b>1</b> Power ON                 | <b>8</b> Play                 |
| <b>2</b> Power OFF (Double Tap)   | <b>9</b> Increase brightness  |
| * <b>3</b> Previous animation     | <b>10</b> Decrease brightness |
| * <b>4</b> Next animation         | <b>11</b> Adjust fan speed    |
| <b>5</b> Loop animation library   | <b>12</b> Adjust angle mode   |
| * <b>6</b> Loop current animation | <b>13</b> Adjust angle left   |
| <b>7</b> Pause                    | <b>14</b> Adjust angle right  |

\* Most commonly used buttons

# IMPORTANT SAFETY AND HANDLING INFORMATION

## WARNING:

Failure to follow these safety instructions could result in fire, electric shock or other injury or damage to the HelloTotem or other property.

The HelloTotem contains sensitive components.

- 1. Do not leave the totem unattended on the stand, most accidental drops are caused by this!**
2. Do not drop, disassemble, open, crush, bend, deform, puncture, shred, microwave, incinerate, paint or insert foreign objects into the HelloTotem.
3. Avoid making strong direct physical contact against the hologram fan.
4. Do not maneuver or swing the totem at fast speeds.
5. Do not use the HelloTotem if it has been damaged  
i.e. cracked, punctured or harmed by water.
6. Do not use an unprotected HelloTotem in **rainy, snowy, or windy** conditions.
7. Extreme low or high temperature conditions may temporarily affect the HelloTotem.  
Avoid dramatic changes in temperature or humidity.
8. Do not operate the HelloTotem if you are under the influence on alcohol and/or drugs.

## LIMITATION OF LIABILITY

In no event shall HELLOTOTEM LLC. exceed the value of the product(s) sold.  
In no event shall HELLO TOTEM LLC. be liable for any direct, indirect, punitive, incidental, special, or consequential damages whatsoever arising out of or connected with the use and misuse of any of the company's products..

## How to Use mobile app for graphics transfer.

Hello fellow totem users, our mobile app is currently in beta testing and the official Hello Totem app is set to be released sometime next month. For the time being, please use our temporary app called "M3D Floatview" which is available on the app store for both Apple/Android. Do not hit the format button, you will lose all images.

**PLEASE BE SURE TO READ THE GUIDELINES ON THE NEXT PAGE BEFORE ACTIVELY USING THE APP.**

**Please watch this video on how to use the app:**

[https://youtu.be/8XkUi61j\\_EQ](https://youtu.be/8XkUi61j_EQ)

**HelloTotem Default Graphics Library v1.0.:**

<https://drive.google.com/drive/u/6/folders/1-6lyGqbyShJvYbqejC5lJtL2YbQljl3>

## IMPORTANT GUIDELINES BEFORE USING THE MOBILE APP

1. You can download pre-converted images and graphics at our official graphics library! Click here for the google drive link. To download to your iPhone, click on the graphic, select Sent To, and select yourself and click save video. For android there will be an option to download to your phone.
  - a. Once downloaded, you may open up the M3D Floatview app, connect to the device via WiFi, and click the + sign and transfer the images.
  - b. Please also do not use the "TEXT" and "CAMERA" functions shown on the bottom right of the app, these are still in beta testing and do not work
  - c. If the file is stuck at 0% transfer, or even if the transfer finishes but you don't see the file, please close the app, reopen it and try again.
  - d. One thing that worked for us really well was to go to your wifi network settings and "FORGET" the 3D-XXXXXX network, and then power up the 3D Hologram fan and try to connect again.
  - e. If you notice some files missing, please delete the last image on the list, you can do this by swiping right and then clicking delete.
  - f. Lower fan brightness for smoother graphic transfers.
2. If you are using an iPhone and are having trouble transferring over graphics, it may be because you have iCloud storage on and the app is unsure whether your graphic is actually on your phone or on the cloud. Please refer to this video link for instructions for a solution:  
<https://www.youtube.com/watch?v=47Y1EvVCITl>

The temporary app M3D Floatview is not perfect, but we have reported the bugs to our development team. The official HelloTotem app release is coming VERY SOON, sometime in January. We already have the beta versions of the HelloTotem app and we can't wait to release it! Our small community has so many great ideas and we can't wait til build upon it.

### How to use the phone app and upload your graphics

1. **Make sure the fan is powered on.**
2. Download the mobile phone app "M3D Floatview"
3. Go to your phone's settings and connect to the 3D WiFi Connection
  - a. You will lose your current wifi connection, please wait until the WiFi signal shows up and then switch to the app.
    - i. Click continue using Cellular Connection if you see a pop up.
4. There is currently around a 25-30 maximum images for the device ( this will be expanded on the next update)
5. Select which graphics you want to display/remove on your HelloTotem!
6. To remove a graphic simply swipe left/right.

# Useful tips when using HelloTotem.

1. Please also visit the rest of our how to guides here.  
<https://hellototem.shop/pages/how-to>
2. We know music festivals can get a little crazy sometimes, if your totem happens to get damaged, its okay! We can help repair it for you!
3. Periodically also make sure the top wheel attachment is always tightened to the 3D fan. Do not overtwist the battery grip attachment . Also, the tripod base may be re-tightened with the provided Allen key
4. When uploading images, there may be times when you have to restart the app to finish the process. Please Refer to the Mobile App Guide located on the How To page
5. When collapsing the tripod, please be sure not to collapse too fast and always ensure your hands are only around the latches as your hand may get caught in it. If you have any experience in photography you will know exactly what we mean by this! :)
6. Always use the default medium brightness for best results in battery life and best quality in graphics. Increasing brightness may cause flickering depending on the custom graphic.