



## MIRKA® DEOS

Imagine the perfect surface. Thanks to the new Mirka® DEOS electric sander, you can obtain that flawless end-result easier and quicker than ever before. By getting you closer to the surface, we bring your sanding experience to a completely new level. Mirka® DEOS, the electric orbital sander, integrates all the innovative features that have made Mirka® DEROS so popular. At only 10 cm high, the tool's compact and very low profile gives a high maneuverability and helps deliver a precise and efficient sanding performance. This small and light sander is naturally equipped with a brushless motor just like Mirka® DEROS.

### CLOSER. FOR PERFECTION.

This powerful and compact direct electric orbital sander is the newest member in the Mirka electric sander family. At only 10 cm high, the tool's compact and very low profile gives a high maneuverability and helps deliver a precise and efficient sanding performance. The optimized ergonomics enable a comfortable grip. The machine has an easy to operate lever to control motor speed. It possesses also a separate on/off switch for easy and safe handling. Mirka® DEOS features an integrated vibration sensor and Bluetooth low energy technology. The vibration sensor makes it possible to view the current vibration level through the myMirka app.



Mirka DEOS 353CV 81x133mm Orbit 3,0  
EAN: 6416868294811

The low profile and small size make Mirka® DEOS 353CV ideal for sanding of profiles and hard-to-reach areas. In combination with Mirka's net abrasives the tool offers fast, efficient and dust-free sanding performance.



Mirka DEOS 353CV 81x133mm CV Orbit 3,0 Case  
EAN: 6416868319545

Mirka® DEOS 353CV is delivered in a high quality plastic case. The low profile and small size make Mirka® DEOS 353CV ideal for sanding of profiles and hard-to-reach areas.



Mirka DEOS 383CV 70x198mm Orbit 3,0  
EAN: 6416868252521

The low profile and small size make Mirka® DEOS 383CV ideal for body filler and primer sanding applications. In combination with Mirka's net abrasives the tool offers fast, efficient and dust-free sanding performance.



Mirka DEOS 383CV 70x198mm CV Orbit 3,0 Case  
EAN: 6416868319453

Mirka® DEOS 383CV is delivered in a high quality plastic case. The low profile and small size make Mirka® DEOS 383CV ideal for body filler and primer sanding applications.

#### Technical specifications

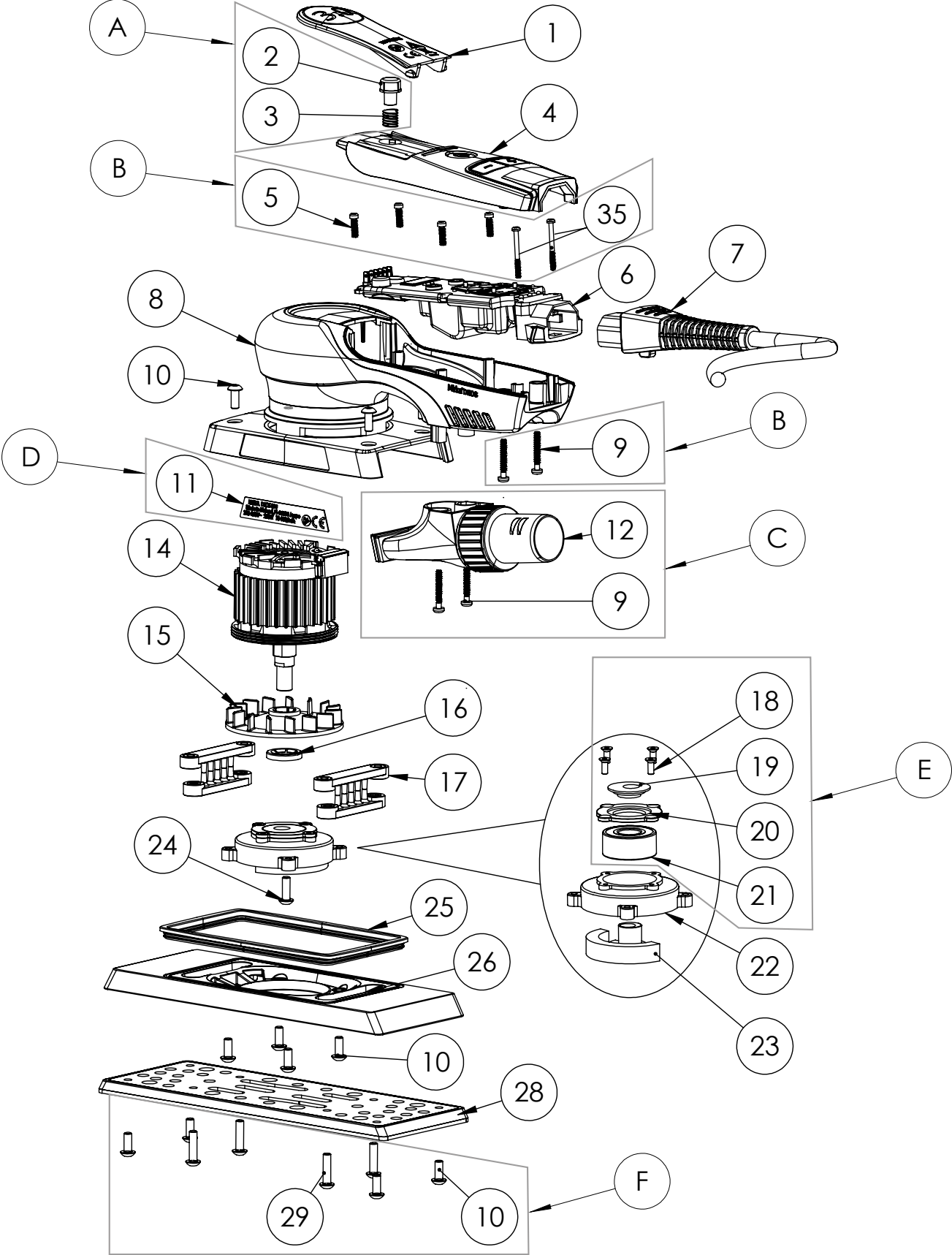
Power input	250 W
Voltage mains supply	220–240 VAC
Orbit	3.0 mm
Speed	5,000–10,000 rpm
Weight	0.97 kg
Size of pad	81 x 133 mm
Dust system	Central vacuum ready
Packaging	Cardboard box/Plastic case
Noise Level, LpA (dB)	69
Vibration level (m/s <sup>2</sup> )	2.6
Connectivity	Bluetooth
Pad included (code)	8292353011
Main frequency (Hz)	50/60

#### Technical specifications

Power input	250 W
Voltage mains supply	220–240 VAC
Orbit	3.0 mm
Speed	5,000–10,000 rpm
Weight	1.0 kg
Size of pad	70 x 198 mm
Dust system	Central vacuum ready
Packaging	Cardboard box/Plastic case
Noise Level, LpA (dB)	71
Vibration level (m/s <sup>2</sup> )	2.6
Connectivity	Bluetooth
Pad included (code)	8292383011
Main frequency (Hz)	50/60



# Exploded view



## Parts list – kits

Mirka code	Item	Description	Kit	Quantity
MIE6520211		<b>Start button kit</b>	A	
	2	Start button		1
	3	Start button spring		1
MIE6520511		<b>Screw kit</b>	B	
	5	Screws <sup>1)</sup>		4
	9	Screws <sup>2)</sup>		2
	35	Screws <sup>1)</sup>	2	
MIE3321211	12	<b>Swivel exhaust kit</b>	C	1
	9	Screws <sup>3)</sup>		2
MIE3321111	11	<b>Type label kit 220–240 V EU</b>	D	
	11	Type label 383		10
	11	Type label 353		10
MIE3321811		<b>Bearing kit</b>	E	
	18	Screws		4
	19	Dust shield		1
	20	Bearing flange		1
	21	Ball bearing	1	
MIE3322711		<b>Pad screw kit</b>	F	
	27	Screws		8
	29	Screws	4	
MIE3322411		<b>Balancing housing screw kit</b>	G	
	13	Washer		1
	24	Screw	1	
MIE3321011		<b>Backing plate screw kit</b>	H	
	10	Screws		4

**NOTE!** Repairs done by non-authorized repairer will breach the Mirka warranty.  
Electrical tool must be serviced by a qualified repair person and in accordance with national requirements.

## Parts list – spare parts & accessories

Item	Description	Quantity
1	Lever 3,0 mm	1
2	Start button	1
3	Spring	1
4	Cover plate	1
5	Screws	4
6	Speed controller*	1
7	Mains cable 4,3 m CE 230V	1
7	Mains cable 4,3 m 230V UK	1
7	Mains cable 4,3 m CE 230V CH/BR	
7	Mains cable 4,3 m CE 230V ANZ	
8	Housing	1
9	Screws	4
10	Screws	4
11	Type label kit 220–240V EU	20
12	Swivel exhaust assembly	1
13	Washer	1
14	Motor assembly 230V <sup>4)</sup> *	1
15	Fan	1
16	Pushlock washer	1
17	Plate support	2
18	Screws	4
19	Dust shield	1
20	Bearing flange	1
21	Ball bearing	1
22	Bearing housing	1
23	Balancing weight 81 x 133 mm	1
23	Balancing weight 70 x 198 mm	1
24	Screw	1
25	Seal	1
26	Backing plate 81 x 133 mm	1
26	Backing plate 70 x 198 mm	1
27	Screws	8
28	Backing pad Net 81 x 133 mm Grip 46H Medium	1
28	Backing pad Net 70 x 198 mm Grip 48H Medium	1
29	Screws	4
35	Screws	2



**Figure 1**



Pad medium*	Code	353CV	383CV
81 x 133 mm (3" x 5")	8292353011	X	
70 x 198 mm (3" x 8")	8292383011		X

## Proper use of tool

This sander is designed for sanding all types of materials, i.e. metals, wood, stone, plastics, etc. using abrasives designed for this purpose. Do not use this sander for any other purpose than that specified without consulting the manufacturer or the manufacturer's authorized supplier. Only use original Mirka backing pads that are designed for optimal performance. Other backing pads may reduce performance and will increase vibration. The cooling air vents on the housing must be kept clean and free of blockages to ensure air circulation. Repair work may only be carried out by an authorized service center.

## Work stations

The tool is intended to be operated as a hand-held tool. It is always recommended that the tool should be used when standing on a solid floor. It can be used in any position but before any such use, the operator must be in a secure position, have a firm grip and footing, and be aware that the sander can develop a torque reaction. See the section "Operating Instructions".

## How to get started

When unpacking the tool, make sure it is intact, complete and has not been damaged in transport. Never use a damaged tool.

Before use, check that the backing pad is correctly mounted and tightened. Connect the power cord to the sander. Connect the power cord to a grounded outlet (220–240 VAC, 50/60 Hz).

In order to get the maximum power from this tool it is recommended to use it with the Mirka dust extractor and Mirka Net Sanding products. The combination of Mirka sanders, net sanding products and Mirka dust extractor are the basis of Mirka dust-free sanding solutions.

The power cord from the sander is connected to the mains supply on the front of the dust extractor. By connecting the sander's power cord to the outlet on the dust extractor it is possible to use the dust extractor's autostart function.

## Operating instructions

- The tool is intended to be operated as a hand-held tool. The tool can be used in any position. Note! The sander can develop a torque reaction when started.
- Make sure the sander is switched off. Select a suitable abrasive and secure it to the backing pad. Make sure the abrasive is centered on the backing pad. For optimal performance we recommend that this tool is used with other Mirka products and accessories.
- Switch on the sander by pressing the On/Off key, Figure 1. The sander LED (right) is now green.
- The sander can now be started by pressing the lever.
- The speed can be adjusted between 5 000 and max rpm by adjusting the position of the lever.
- The max rpm can be adjusted by pressing rpm+ or rpm-, Figure 1. The rpm can be adjusted in steps 5 000, 6 000, 7 000, 7 500, 8 000, 9 000 and 10 000 rpm.
- The tool has two speed control modes. In the default mode the speed can be adjusted linearly by changing the position of the lever. In the other mode the speed remains fixed at the set max rpm when the tool is running. When the rpm+ and rpm- buttons are pressed simultaneously the tool toggles between the two controlling modes.
- When sanding, always place the tool on the work surface before starting the tool. Always remove the tool from the work surface before stopping it.
- When sanding is finished, turn off the sander by pressing the On/Off key. The sander LED (right) is now turned off.

## Bluetooth

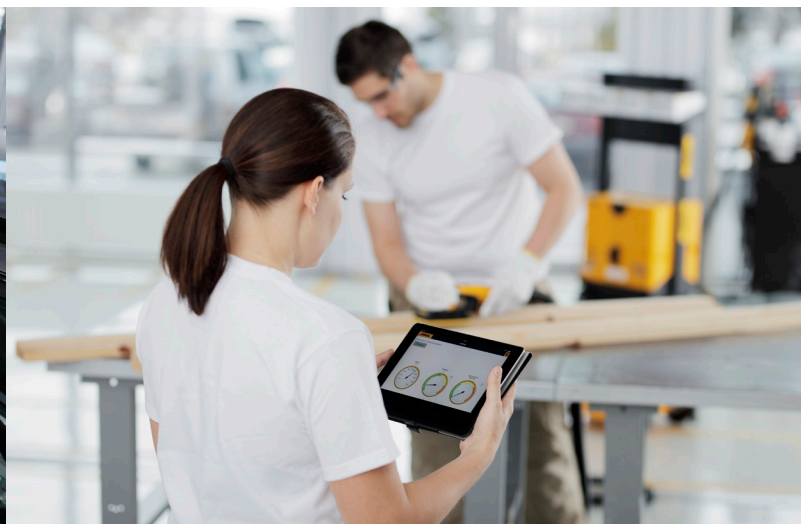
This tool is equipped with Bluetooth® low energy technology and can be connected to an App from which additional tool functionality can be accessed. For more information on the App functionality and whether it is available in your country, go to [www.mirka.com](http://www.mirka.com).

Activate Bluetooth on your Mirka® DEOS as follows:

1. Connect the power cord to mains outlet.
2. Press and hold the + button while switching the tool on with the On/Off button.
3. Left LED lights up (green), to indicate that Bluetooth is active.
4. Bluetooth is deactivated when the tool is disconnected from mains outlet.

**NOTE!** If the App is not installed or if it is not available in your country, Bluetooth should not be activated.

The Bluetooth® word mark and logos are registered trademarks owned by Bluetooth SIG, Inc. and any use of such marks by KWH Mirka Ltd is under license. Other trademarks and trade names are those of their respective owners.



# Maintenance



Always disconnect the power before maintenance!  
Only use original Mirka spare parts!

## Replacing the backing pad

The backing pad is fixed with 8 screws.

**A** = 8 mm (only on 70 x 198 mm)

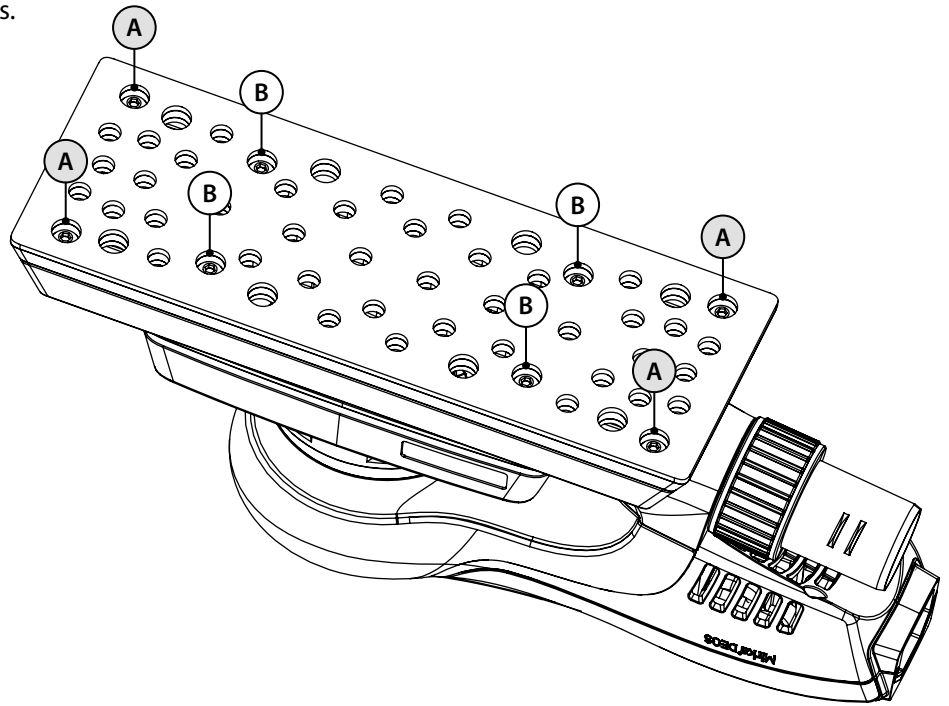
**B** = 16 mm

### Remove

1. Turn the tool upside down.
2. Remove the 4 screws (A).
3. Remove the 4 screws (B).
4. Remove the backing pad.

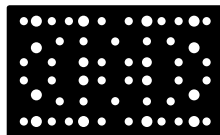
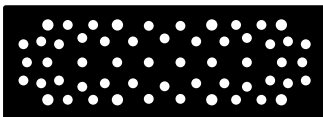
### Install

1. Fit the new pad.
2. Fit the 4 screws (B).
3. Fit the 4 screws (A).
4. Finally tighten all 8 screws.



## Pad saver

Mirka's pad savers are designed to protect the backing pad from wear and tear, when sanding aggressively and continuously with net products. These cost-effective pad savers, placed between the backing pad and the sanding strip, should be changed regularly. The pad savers prolong the life of the backing pad.



[http://www.mirka.com/accessories/Pad\\_Savers/](http://www.mirka.com/accessories/Pad_Savers/)



## Further service

Servicing must always be performed by trained personnel. To keep the tool warranty valid and ensure optimal tool safety and function, servicing must be carried out by a Mirka authorized service center. To locate your local Mirka authorized service center, contact Mirka Customer service or your Mirka dealer.

## Troubleshooting guide

Symptom	Possible cause	Solution
The sander LED (right) is flashing between red and green.	Connected to a mains outlet with wrong voltage.	Connect the sander to a mains outlet that matches the nominal voltage of the tool.
No light from sander LED (right) when switched on.	Power cord not properly attached to the sander or to the mains socket.	Connect it properly.
The sander LED (right) is red and the sander slows down to 5,000 rpm when sanding.	Temperature too high in the sander. Too heavy long-term load.	Reduce the load on the sander for some time and the sander will speed up again.
The sander LED (right) is red and rpm is slightly reduced.	Too heavy short-term load.	Use lighter load and the LED (right) will automatically change to green.
The sander has stopped and LED (right) is red.	The tool is in safety mode due to high temperature.	Wait until the tool has cooled down.

## Disposal information



### DANGER

Disposal guidelines for old appliances. Render redundant power tools unusable by removing the power cord. Only for EU countries. Do not dispose of electric tools along with household waste. According to European Directives 2002/95/EC, 2012/19/EU + 2003/108/EC on waste electrical and electronic equipment and their implementation under national law, electric tools that have reached the end of their life must be collected separately and taken to an environmentally compatible recycling facility.

# LIGHT. COMPACT. POWERFUL.



## Mirka DEOS CLOSER. FOR PERFECTION.

In combination with Mirka's net abrasives the tool offers fast, efficient and dust-free sanding performance.



# Mirka Hoses & Adapters



All adapters shown on this overview are included in the box with the particular hose. Only exception is parts with separate Mirka code. The adapters 1–12 can also be ordered as spareparts.

**Mirka® DEROS | DEOS | LEROS**

1 2 a 2 b 3  
5,5 m • MIE6514511  
10 m • MIE6514711  
4 m • MIN6519411

10 m extension hose • MIN6519711 • Remove 3 from 4 m and connect with 8  
[Can be cut into desired length and connected to the MIN6519411 hose.]

**Mirka® CEROS**

6 3 4 m • MIN6519411  
10 m extension hose • MIN6519711 • Remove 3 from 4 m and connect with 8  
Can be cut into desired length and connected to the MIN6519411 hose.

**Miro 955® | 955®-S**

4 a 4 b  
4 m • 8394010311

**Hand Sanding Blocks**

5 m • 839113011  
4 m • 839112011  
4 m • 839112011  
8391111111  
4 m • MIN6519411

Extension hoses MIE6514511, MIE6514711, 8992514511, 8992514711, 8992515011 • Remove 1  
8993022011 + 4 m • 839112011 • Remove conical adapter from 4 m and connect with 7  
8993022911 + 4 m • MIN6519411 • Remove conical adapter from 4 m and connect with 10  
10 m extension hose • MIN6519711 • Remove 3 from 4 m and connect with 8  
Can be cut into desired length and connected to the MIN6519411 hose.



Mirka® DEROS   DEOS   LEROS • Hose diameters (Ø)		Ø to Sander (mm)		Ø to Dust Extractor (mm)	
		Inner	Outer	Inner	Outer
MIE6514511	Hose* 27 mm x 5,5 m • with intergrated cable • CE 230 V	25	27 / 32	32	34 / 40
MIE6514711	Hose* 27 mm x 10 m • with intergrated cable • CE 230 V	25	27 / 32	32	34 / 40
MIN6519411	Hose* 27 mm x 4 m + Connector	25	27 / 32	32	34 / 40

Mirka® CEROS • Hose diameters (Ø)		Ø to Sander (mm)		Ø to Dust Extractor (mm)	
		Inner	Outer	Inner	Outer
MIN6519411	Hose* 27 mm x 4 m + Connector	25	27 / 32	32	34 / 40
MIN6519711	Extension hose* • 32 mm x 10 m Can be cut into desired length and connected to the MIN6519411 hose.	–	–	32	34 / 40

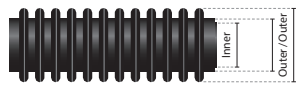
  

Mirka® Cleaning Kit • Hose diameters (Ø)		Ø to Sander (mm)		Ø to Dust Extractor (mm)	
		Inner	Outer	Inner	Outer
8999799111	Clean-up kit for Dust Extractors	25	27 / 32	32	34 / 40

Hand Sanding Blocks • Hose diameters (Ø)		Ø to Sander (mm)		Ø to Dust Extractor (mm)	
		Inner	Outer	Inner	Outer
839113011	Hose* 20 mm x 5 m • for Hand Sanding Blocks	20	22 / 26	–	–
839112011	Hose 20 mm x 4 m • for Hand Sanding Blocks	20	22 / 26	–	–
MIN6519411	Hose* 27 mm x 4 m + Connector	25	27 / 32	32	34 / 40

\* electrical conductive ( $\leq 10^5 \Omega/\text{square}$ )  
\*\* antistatic ( $\leq 10^{10} \Omega/\text{square}$ )



Adapter	Description
8999804111*	1 Hose Ø 27 mm x 0,5 m + Connector. This conductive adapter enables a quick change in-between Mirka power tools. Fix the adapter on each tool and connect/disconnect to/from any Mirka hose assembly with a Mirka branded adapter, both pneumatic: 8992514511, 8992514711, 8992515011 (also the old version of 8992514511) and electric: MIE6514511 and MIE6514711.
8992515811*	2 Mirka Connector for Air + Electric Hoses. Comes with hoses MIE6514511, MIE6514711, 8992514511, 8992514711 and 8992515011.
8992515911*	2 Connector for Air + Electric Hoses with threads. This adapter is close to the dust extractor, where the pneumatic tube/electrical cable comes out. Comes with hoses MIE6514511, MIE6514711, 8992514511, 8992514711 and 8992515011.
8992515611*	3 Hose adapter Ø 32 mm / 54 mm for Mirka® Dust Extractors. Comes with hoses MIE6514511 / MIE6514511US, MIE6514711 / MIE6514711US, MIN6519411, MIN6519711, 8992514511, 8992514711 and 8992515011. This adapter goes from the hose into the dust extractor.
8394020311** a b	4 Hose Connector Kit No. 3–1 and 3–2 for Miro 955® & 955®-S. Adapter for both ends on the hose for Miro. Connector 4b: Ø 54 mm.
8391111111*	5 Adapter Ø 20 mm / 28 mm for Mirka® Hand Sanding Blocks. Enables using the Ø 27 mm hose (MIN6519411) together with the blocks.
8992515411*	6 Soft Connector Ø 25,4 mm. Delivered together with hose MIN6519411. Enables connecting MIN6519411 hose to Mirka Decosander®, Mirka Dust Suction Hood and sanders of other brands. Note! Not suitable for Mirka® CEROS or Mirka® ROS.
8993022011	7 Hose Swivel Connector Ø 20 mm / 20 mm. Enables connecting two Ø 20 mm hoses. For example: 2 x Ø 20 mm hose x 4 m hose (839112011).
8992515711*	8 Hose Connector Ø 32 / 32 mm. Delivered together with extension hose MIN6519711. Enables connection with the hose MIN6519411.
8393001511*	9 Adapter Ø 30–48 mm for Dust Extractor. Can be cut to fit dust extractors of other brands.
8993022911	10 Hose Swivel Adapter 20 / 25,4 mm. Enables connecting a Ø 20 mm hose with Ø 27 mm hose MIN6519411.
8999814111**	11 Hose 20 mm x 0,5 m + Connector. This antistatic adapter enables a quick change between Mirka power tools with 19 / 20 mm dust extraction fittings, e.g. Mirka® OS CV and Mirka® ROS 77 mm CV. Fix this adapter on each tool and connect/disconnect to/from any Mirka hose assembly.
8391112111	12 Connector Air Inlet for Hand Sanding Block 20 / 20 mm. When fixed on a Mirka 20 mm dust extraction hose, this new connector enables a quick and smooth change of the hose from one Mirka hand sanding block to another. This connector enables adjusting the airflow.





# Mirka Backing Pad Guide – Electric Tools

Sanders and accessories		Mirka® DEOS 353CV	Mirka® DEOS 353CV CASE	Mirka® DEOS 383CV	Mirka® DEOS 383CV CASE	Mirka® DEROS 550CV	Mirka® DEROS 625CV	Mirka® DEROS 650CV	Mirka® DEROS 5650CV CASE	Mirka® DEROS 680CV	Mirka® CEROS 150CV	Mirka® CEROS 325CV	Mirka® CEROS 325CV W/O PSU	Mirka® CEROS 550CV	Mirka® CEROS 550CV CASE	Mirka® CEROS 625CV	Mirka® CEROS 650CV W/O PSU	Mirka® CEROS 650CV	Mirka® CEROS 650CV CASE	Mirka® AOS-B	Mirka® AROS-B
<b>150 mm</b>																					
<b>Mirka code</b>																					
Net 5/16" Grip 48H Medium	8292605011						Yes – incl.	Yes – incl.	Yes – incl.	Yes – incl.						Yes – incl.	Yes – incl.	Yes – incl.	Yes – incl.		
Net 5/16" Grip 48H Hard	8292605021						Yes	Yes	Yes	Yes						Yes	Yes	Yes	Yes		
Net 5/16" Grip 48H Soft	8292605031						Yes	Yes	Yes	Yes						Yes	Yes	Yes	Yes		
5/16" Grip 15H Medium	8295291511						No	No	No	No						Yes	Yes	Yes	Yes		
Net 5/16" Grip 51H Medium	8295692111						No	No	No	No						Yes	Yes	Yes	Yes		
5/16" PSA 6H Medium	8295291211						No	No	No	No						Not rec.	Not rec.	Not rec.	Not rec.		
5/16" Grip 6H Medium	8295292111						No	No	No	No						Not rec.	Not rec.	Not rec.	Not rec.		
5/16" Grip 6H Soft	8297292111						No	No	No	No						Not rec.	Not rec.	Not rec.	Not rec.		
5/16" PSA Medium	8295291111						No	No	No	No						No	No	No	No		
5/16" Grip	8295297111						No	No	No	No						No	No	No	No		
UNI 5/16"+ M8 Grip 61H Hard	8295495111						No	No	No	No						No	No	No	No		
UNI 5/16"+ M8 Grip 61H Medium	8295494111						No	No	No	No						No	No	No	No		
UNI 5/16"+ M8 Grip 57H Medium	8295486111						No	No	No	No						No	No	No	No		
<b>125 mm</b>																					
<b>Mirka code</b>																					
5/16" Grip Medium	8295191511					No										No	No				
5/16" Grip 5H Medium	8295192111					No										Not rec.	Not rec.				
Net 5/16" Grip 44H Medium	8295592111					No										Yes	Yes				
Net 5/16" Grip 28H 100 g	8292502011					Yes – incl.										Yes – incl.	Yes – incl.				
Net 5/16" Grip 28H 130 g	8292502511					No	Yes	Yes	Yes – incl.	Yes						No	No	Not rec.	Not rec.	Not rec.	Not rec.
Net 5/16" Grip 28H Soft	8292502031					Yes										Yes	Yes				
Net 5/16" Grip 28H Hard	8292502021					Yes										Yes	Yes				
<b>70 x 198 mm</b>																					
<b>Mirka code</b>																					
Net Grip 48H Medium	8292383011		Yes – incl.	Yes – incl.																	
Grip 56H Medium	8295380111		No	No																	
<b>81 x 133 mm</b>																					
<b>Mirka code</b>																					
Net Grip 46H Medium	8292353011	Yes – incl.	Yes – incl.																		
Grip 54H Medium	8295350111	No	No																		
<b>32 mm</b>																					
<b>Mirka code</b>																					
PSA Soft, 5/Unit	8294593311										No									No	No
Grip Medium, 10/Unit	8294591311										No									No	No
Quick Lock PSA Hard, 10/Unit	8294595311										Yes									Yes – incl.	Yes – incl.
Quick Lock PSA Soft, 10/Unit	8294596311										Yes – incl.									Yes	Yes
Quick Lock Grip Soft, 10/Unit	8294598311										Yes – incl.									Yes – incl.	Yes – incl.
Quick Lock PSA Soft Edge, 5/Unit	8294594311										Yes									Yes	Yes
<b>20 mm</b>																					
<b>Mirka code</b>																					
Quick Lock PSA Hard, 10/Unit	8294590311										Yes									Yes	Yes
<b>77 mm</b>																					
<b>Mirka code</b>																					
1/4" Grip Medium	8294791311										No	No									
1/4" Grip 6H Medium	8294791211										Yes – incl.	Yes – incl.									

