



MIRKA® AROS-B & AOS-B

Mirka is expanding its power tool range by introducing the first small brushless battery driven spot repair sanders. As with all Mirka machines, the ergonomic design has been a priority to ensure that the light tool can comfortably be used for long periods without fatigue. These strong cordless sanders enable a long working time as the battery lasts up to 16 hours in industrial use. The lithium-ion battery charges in only 45 minutes. When using a cordless sander the operator can freely move around the object. As no pneumatic hose is needed the risk of the hose causing defects on the surface being sanded is removed.



MIRKA® AROS-B

Brushless spot repair sander with a random 5 mm orbit. The battery-driven Mirka® AROS-B 150NV is small, ergonomic and energy efficient. There's no cord to get tangled in and no air supply that can get contaminated; this tool does not even require oiling. The 10.8V Li-ion battery lasts up to 16 hours in industrial use and charges in 45 minutes.

EAN: 6416868900903



MIRKA® AOS-B

Brushless spot repair sander with a 3 mm orbit. The battery-driven Mirka® AOS-B 130NV is small, ergonomic and energy efficient. There's no cord to get tangled in and no air supply that can get contaminated; this tool does not even require oiling. The 10.8V Li-ion battery lasts up to 16 hours in industrial use and charges in 45 minutes.

EAN: 6416868900965



Technical Specifications

	Mirka® AROS-B 150NV	Mirka® AOS-B 130NV
Code	8991150311	8991230311
Voltage	10.8 VDC	10.8 VDC
Speed	4,000 – 8,000 rpm	4,000 – 8,000 rpm
Orbit	5.0 mm (3/16")	3.0 mm (1/8")
Size of backing pad	Ø 32 mm (1 1/4")	Ø 32 mm (1 1/4")
Degree of protection	III	III

Battery charger		BCA 108
Input	100 – 240 VAC, 50/60 Hz	
Charging time	< 40 min (2.0 Ah)	
Storage temperature range	-20 °C...80 °C	
Charging temperature	-0 °C...40 °C	
Dimension	191 x 102 x 86 mm	
Net weight	0.66 kg (1.46 lbs)	
Degree of protection	II / ☐	

Battery pack		BPA 10820
Type	Rechargeable Li-ion 3I(NCM)R19/65	
Battery voltage	10.8 VDC	
Capacity	2.0 Ah 21.6 Wh	

Proper use of tool

This sander is designed for sanding all types of materials such as paints, metals, wood, stone, plastics, etc., using abrasives specially designed for this purpose. Do not use this sander for any other purpose than that specified without consulting the manufacturer or the manufacturer's authorized supplier. Do not use backing pads with an operating speed of less than 8000 rpm free speed. Any maintenance or repair work requiring the motor housing to be opened may only be carried out by an authorized service center.

Battery and charger

- The battery pack is not fully charged out of the carton. First read the safety instructions and then charge your battery according to the instructions.
- For optimal charging capacity the battery should be charged at an ambient temperature between 18°C and 24°C. To prevent damage to the battery pack, do not charge the battery pack where the air temperature is below 4°C or above 40°C.
- To obtain the longest possible battery life, we suggest the following:
 - Store and charge your battery in a cool area. Temperatures above or below normal room temperature will shorten battery life.
 - Never store the battery in a discharged condition. Recharge it immediately after it has been discharged.
- All batteries gradually lose their charge. The higher the temperature, the quicker they lose their charge.

If you store your tool for long periods of time without use, recharge the battery every month. This practice will prolong battery life.

Charging procedure

- Connect the power cord to the charger, and then plug into an outlet before inserting battery pack. All three charging lights will be on for two seconds and then turn off.
- Insert the battery pack into the charger.
- During the charging process, the charging lights will indicate the status as follows:
 - Three charging lights will flash in sequence during the charging process.
 - Fully charged, all three lights will remain on continuously.
- The charging process will last approximately 40 minutes for Mirka 10.8 V 2.0 Ah battery pack.

NOTE: This charger can only charge Mirka 10.8 V battery packs.

NOTE: Charging times may be longer depending on the surrounding temperature and battery conditions.

LED indication of 10.8 V charger

LED						
3						
2						
1						
Status	 Pre-charge (Trickle charge)	 Charging...	 Charging...	 Charging finished	 Over temperature	 Battery failure

Remain continuously on

Flashing



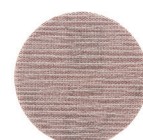
Polarstar® SR



WPF



Abralon®

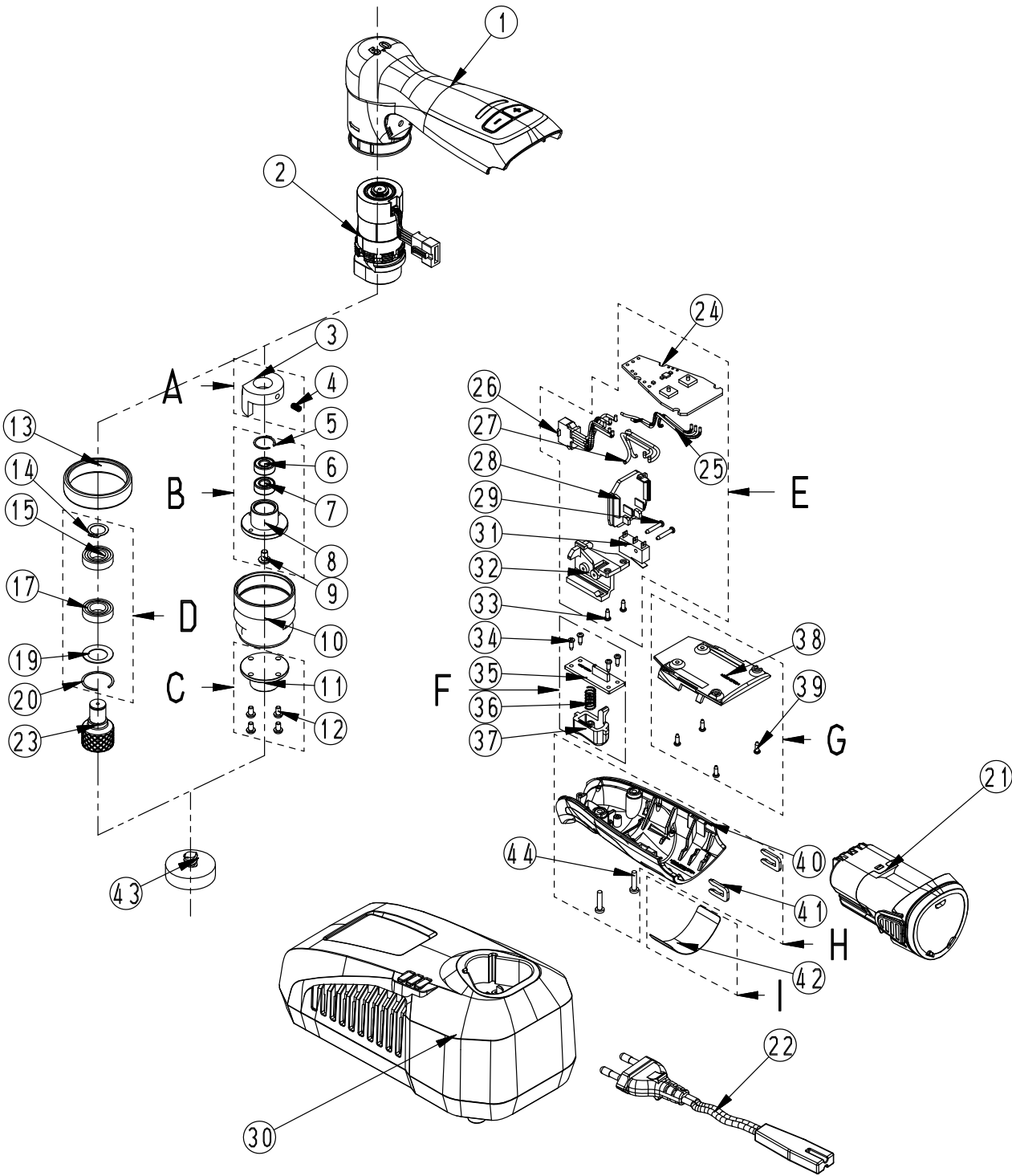


Abranet®



Q.Silver®

Exploded view



Parts list – kits

Mirka code	Item	Description	Kit	Quantity
8991120311		Counter weight kit for AOS-B	A	
	3	Counter weight		1
	4	Seth screw		1
8991120511		Spindle bearing kit for AOS-B	B	
	5	Retaining ring		1
	6	Ball bearing		1
	7	Ball bearing		1
	8	Balance shaft		1
	9	Assembly screw		1
8991121111		Quick lock plate assembly for AOS-B	C	
	11	Quick lock plate		1
	12	Assembly screws		4
8991121411		Spindle bearing kit for AROS-B	D	
	14	Retaining ring		1
	15	Ball bearing		1
	17	Ball bearing		1
	19	Washer		1
	20	Retaining ring		1
8991122411		Speed controller kit	E	
	24	Speed controller		1
	25	Battery wire		1
	26	Motor connector assembly		1
	27	Trigger wires		1
	28	Battery terminal		1
	29	Assembly screws for switch		2
	31	Switch		1
	32	Holder		1
	33	Assembly screws for switch holder		2
8991123411		Trigger button kit	F	
	34	Assembly screws for trigger button cover		4
	35	Trigger button cover		1
	36	Trigger spring		1
	37	Trigger button		1
8991123811		PCB cover kit	G	
	38	PCB cover		1
	39	Assembly screws		4
8991124011		Cover kit	H	
	40	Cover		1
	41	Assembly clamps		2
	44	Assembly screws for cover		2
8991124211		Label kit for AROS-B and AOS-B	I	
	42	Tool labels		20

Spareparts and accessories on page 6.



Parts list – spareparts & accessories

Mirka code	Item	Description	Kit	Quantity
8991110111	1	Housing		1
8991110231	2	AOS-B motor orbit 3.0 mm		1
8991110251	2	AROS-B motor orbit 5.0 mm		1
8991111011	10	Rubber mount		1
8991111311	13	Soft ring		1
8991122111	21	Battery pack		1
8991112211	22	Power cord 2.0 m Europlug		1
8991112311	22	Power cord 2.0 m US		
8991112411	22	Power cord 2.0 m UK		
8991112611	22	Power cord 2.0 m CN		
8991112301	23	Spindle quick lock insert		1
8991123011	30	Battery charger		1
8294595311	43	Backing pad Quick lock 32 mm PSA Hard		1
8294598311	43	Backing pad Quick lock 32 mm Grip Soft		1

Troubleshooting guide

Symptom	Possible cause	Solution
No light from sander right LED when trigger is pressed.	Battery pack not properly attached to the sander. Battery totally empty.	Insert the battery properly. Charge the battery.
The right sander LED is red and the sander slows down to 4000 rpm or stops when sanding.	Temperature too high in the sander. Heavy load for too long.	Reduce the load on the sander for some time and the sander will speed up again.
The right sander LED is red and rpm is slightly reduced.	Too heavy short-term load.	Use lighter load or wait a moment and the LED will automatically change to green.
The left LED is red and the sander is not running.	The battery voltage is too low.	Charge the battery.