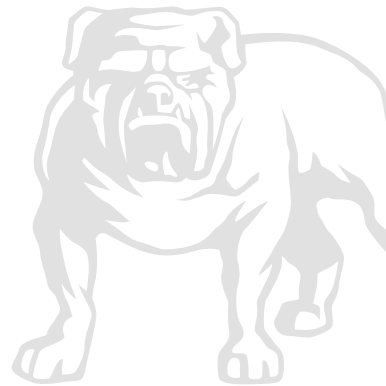


MIRKA

Mirka® AROP-B 312NV
Mirka® ARP-B 300NV

77 mm (3") • 10.8 V






Mirka® AROP-B 312NV

Mirka® ARP-B 300NV

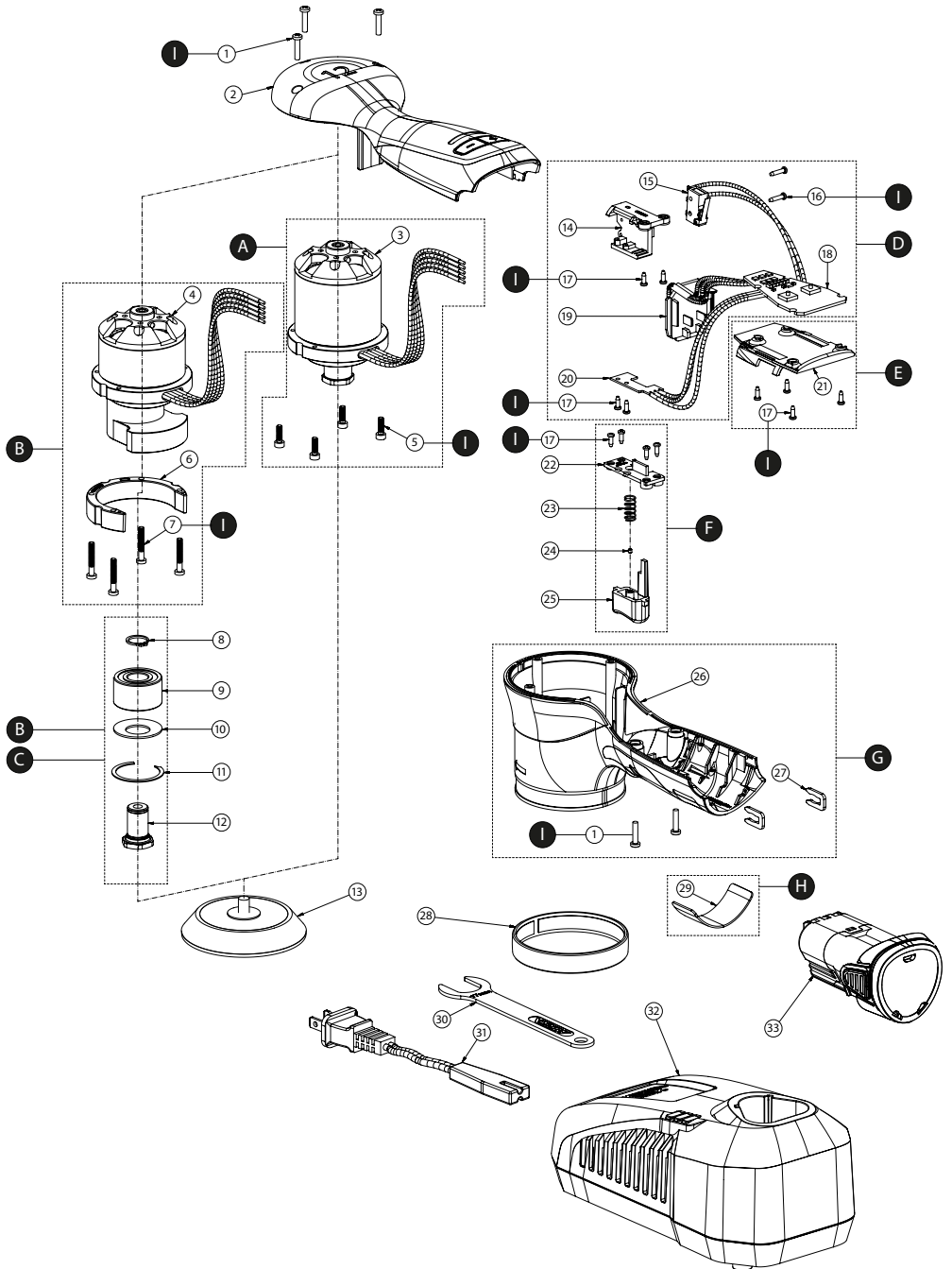
77 mm (3") • 10.8 V

ar	إرشادات التشغيل.....	7	»	
bg	Инструкция за експлоатация.....	14	»	
cs	Návod k obsluze.....	23	»	
da	Brugsanvisning.....	31	»	
de	Bedienungsanleitung.....	39	»	
el	Οδηγίες χρήσης.....	48	»	
en	Operating instructions (original).....	57	»	
es	Instrucciones de manejo.....	65	»	
et	Kasutusjuhised.....	73	»	
fi	Käyttöohjeet.....	81	»	
fr	Instructions d'utilisation.....	89	»	
hr	Upute za rad.....	97	»	
hu	Kezelői útmutató.....	105	»	
it	Istruzioni per l'uso.....	113	»	
ja	取扱説明書.....	121	»	
ko	사용 지침.....	129	»	
lt	Naudojimo instrukcijos.....	137	»	
lv	Lietošanas instrukcija.....	145	»	
mk	Упатства за ракување.....	153	»	
nl	Gebruiksaanwijzing.....	162	»	
no	Bruksanvisning.....	170	»	
pl	Instrukcje dot. użytkowania.....	178	»	
pt	Instruções de operação.....	187	»	
ro	Instrucțiuni de operare.....	195	»	
ru	Руководство по эксплуатации.....	203	»	
sl	Navodila za uporabo.....	213	»	
sr	Uputstvo za rad.....	221	»	
sv	Bruksanvisning.....	229	»	
tr	İşletim Talimatları.....	237	»	
zh	操作说明.....	245	»	

United States of America, Mexico & Canada

en us • ca	Operating instructions.....	253	»	
es us • mx	Instrucciones de manejo.....	262	»	
fr ca	Instructions d'utilisation.....	271	»	

Exploded view



Parts list – kits

Mirka code	Item	Description	Kit	Qty	Tightening torque
8991020311		ARP-B motor	A		
	3	ARP-B motor 30 g pad		1	
	5	Screws for ARP-B motor		4	0.6–0.8 Nm
8991020411		AROP-B motor orbit 12.0 mm	B		
	4	AROP-B motor 30 g pad orbit 12.0 mm		1	
	6	Base block for AROP motor		1	
	7	Screws for AROP-B motor		4	0.6–0.8 Nm
	8	Retaining ring		1	
	9	Bearing		1	
	10	Belleville washer		1	
	11	Retaining ring		1	
	12	Spindle		1	
8991020811		Spindle bearing kit for AROP-B	C		
	8	Retaining ring		1	
	9	Bearing		1	
	10	Belleville washer		1	
	11	Retaining ring		1	
	12	Spindle		1	
8991021411		Speed controller kit	D		
	14	Holder		1	
	15	Switch		1	
	16	Assembly screws for switch		2	0.2–0.3 Nm
	17	Assembly screws		4	0.3–0.5 Nm
	18	Speed controller		1	
	19	Battery terminal		1	
	20	Trigger sensor PCB		1	
8991022111		PCB cover kit	E		
	17	Assembly screws		4	0.3–0.5 Nm
	21	PCB cover		1	
8991022511		Trigger button kit	F		
	17	Assembly screws		4	0.3–0.5 Nm
	22	Trigger button cover		1	
	23	Trigger spring		1	
	24	Magnet		1	
	25	Trigger button		1	
8991022611		Housing kit	G		
	1	Assembly screws		2	0.6–0.8 Nm
	26	Housing		1	
	27	Assembly clamps		2	
8991022911		Label kit for AROP-B & ARP-B	H		
	29	Type label ARP-B		5	
	29	Type label AROP-B		5	
8991020111		Screw kit	I		
	1	Assembly screws for housing		5	0.6–0.8 Nm
	5	Screws for ARP-B motor		4	0.6–0.8 Nm
	7	Screws for AROP-B motor		4	0.6–0.8 Nm
	16	Assembly screws for switch		2	0.2–0.3 Nm
	17	Assembly screws		12	0.3–0.5 Nm

NOTE! Repairs done by non-authorized repairer will breach the Mirka warranty.

Electrical tool must be serviced by a qualified repair person and in accordance with national requirements.

Parts list – spareparts & accessories

Mirka code	Item	Description	Kit	Qty	Tightening torque
	1	Assembly screws for housing	G	5	0.6–0.8 Nm
8991010211	2	Cover for ARP-B		1	
8991060211	2	Cover for AROP-B		1	
	3	ARP-B motor 30 g pad	A	1	
	4	AROP-B motor 30 g pad orbit 12.0 mm	B	1	
	5	Screws for ARP-B motor	A	4	0.6–0.8 Nm
	6	Base block for AROP motor	B	1	
	7	Screws for AROP-B motor	B	4	0.6–0.8 Nm
	8	Retaining ring	B, C	1	
	9	Bearing	B, C	1	
	10	Belleville washer	B, C	1	
	11	Retaining ring	B, C	1	
	12	Spindle	B, C	1	
8294791311	13	Backing pad		1	
	14	Holder	D	1	
	15	Switch	D	1	
	16	Assembly screws for switch	D	2	0.2–0.3 Nm
	17	Assembly screws	D, E, F	12	0.3–0.5 Nm
	18	Speed controller	D	1	
	19	Battery terminal	D	1	
	20	Trigger sensor PCB	D	1	
	21	PCB cover	E	1	
	22	Trigger button cover	F	1	
	23	Trigger spring	F	1	
	24	Magnet	F	1	
	25	Trigger button	F	1	
	26	Housing	G	1	
	27	Assembly clamps	G	2	
8991012811	28	Soft ring		1	
	29	Type label ARP-B	H	1	
	29	Type label AROP-B	H	1	
8993008013	30	Pad wrench		1	
8991112211	31	Power cord 2.0 m EU		1	
8991112311	31	Power cord 2.0 m US		1	
8991112411	31	Power cord 2.0 m UK		1	
8991112611	31	Power cord 2.0 m CN		1	
8991112711	31	Power cord 2.0 m ANZ		1	
8991123011	32	Battery charger		1	
8991122211	33	Mirka intelligent battery BPA 10825 10.8 V 2.5 Ah		1	
8991122311	33	Mirka intelligent battery BPA 10850 10.8 V 5.0 Ah		1	

Declaration of conformity

<p>Mirka Ltd., 66850 Jeppo, Finland declares under its sole responsibility that the Mirka® AROP-B & ARP-B 77 mm (3") Electrical Polishers (see the "Technical data" table for the particular model) conform with the following standards or other normative documents: EN 62841-1:2015, EN 60745-1:2009, EN 60745-2-3:2011/A13:2015, EN 62841-2-4:2014 in accordance with the regulations 2006/42/EC, 2014/30/ EU, 2015/863/EU. Charger safety specification according to EN 60335-1:2012/ A13:2017, EN 60335-2-29:2004/A2:2010, EN 62233:2008. Charger EMC according to EN 55014-1:2017, EN 55014-2:2015, EN 61000-3-2:2014, EN 61000-3-3:2013.</p>		
<p><i>Jeppo, September 25, 2019</i> Place and date of issue</p>	 Company	 Stefan Sjöberg, CEO
<p>Operating instructions include: Exploded view, Parts list, Declaration of conformity, Required personal safety equipment, Warning, Caution, Safety rules, Safety warnings, Safety instructions, Technical data, Noise and vibration information, Proper use of tool, Battery and charger, Getting started, Operating instructions, Maintenance, Further service, Troubleshooting guide, Disposal information.</p>	<p>Manufacturer / Supplier Mirka Ltd. 66850 Jeppo, Finland Phone +358 20 760 2111 Fax +358 20 760 2290 www.mirka.com</p>	

Translation of the original instructions. We reserve the right to make changes to this manual without prior notice.

Important

Read these safety and operating instructions carefully before installing, operating or maintaining this tool. Keep these instructions in a safe and accessible place.

Required personal safety equipment



Read operator's manual



Wear safety glasses



Wear ear protection



Wear safety gloves



Wear face mask



Warning: Potential hazardous situation that may result in death or serious injury and/or property damage.

Caution: Potential hazardous situation that may result in minor or moderate injury and/or property damage.

Please read and comply with

- General Industry Safety & Health Regulations, part 1910, OSHA 2206, available from: Superintendent of Documents; Government Printing Office; Washington DC 20402
- State and local regulations



Mirka® AROP-B 77 mm (3") Electrical Polisher
 CONFORMS TO UL STD 62841-1, 62841-2-4.
 CERTIFIED TO CSA STD C22.2 No. 62841-1, C22.2 No. 62841-2-4.

Mirka® ARP-B 77 mm (3") Electrical Polisher
 CONFORMS TO UL STD 60745-1, 60745-2-3,
 CERTIFIED TO CSA STD C22.2 No. 60745-1, C22.2 No. 60745-2-3.

This device contains licence-exempt transmitter(s)/receiver(s) that comply with Innovation, Science and Economic Development Canada's licence-exempt RSS(s). Operation is subject to the following two conditions:

1. This device may not cause interference.
2. This device must accept any interference, including interference that may cause undesired operation of the device.



Compliance

This device complies with part 15 of the FCC Rules. Operation is subject to the following two conditions:

1. This device may not cause harmful interference.
2. This device must accept any interference received, including interference that may cause undesired operation.

NOTE: This equipment has been tested and found to comply with the limits for a Class B digital device, pursuant to part 15 of the FCC Rules. These limits are designed to provide reasonable protection against harmful interference in a residential installation. This equipment generates, uses and can radiate radio frequency energy and, if not installed and used in accordance with the instructions, may cause harmful interference to radio communications. However, there is no guarantee that interference will not occur in a particular installation. If this equipment does cause harmful interference to radio or television reception, which can be determined by turning the equipment off and on, the user is encouraged to try to correct the interference by one or more of the following measures:

- Reorient or relocate the receiving antenna.
- Increase the separation between the equipment and receiver.
- Connect the equipment into an outlet on a circuit different from that to which the receiver is connected.
- Consult the dealer or an experienced radio/TV technician for help.

CAUTION TO THE USER: Changes or modification not expressly approved by the party responsible for compliance could void the user's authority to operate the equipment.

This device complies with Industry Canada's licence-exempt RSSs. Operation is subject to the following two conditions:

1. This device may not cause interference; and
2. This device must accept any interference, including interference that may cause undesired operation of the device.



WARNING

- Always wear required personal safety protection in accordance with manufacturer's instructions and local/national standards while using this tool.
- Read the Materials Safety Data Sheet (MSDS) for the work surface.
- If any physical hand/wrist discomfort is experienced, stop working and seek medical attention. Hand, wrist and arm injury may result from repetitive work, motion and overexposure to vibrations.



CAUTION

- Always ensure that the work piece to be polished is firmly fixed in place.
- Always disconnect the power source before changing the polishing or backing pad.
- Never carry, store or leave the tool unattended with the power source connected.
- Keep hands clear of the spinning pad during use.
- Do not allow the tool to run unloaded without taking precautions to protect people and objects in the event that the polishing or backing pad comes loose.

Safety rules for battery pack and charger

WARNING!

- Important safety and operating instructions for your battery and charger. Read all instructions and warnings on the charger, the battery pack and the tool before using the charger.
- If the battery pack casing is cracked or damaged, do not insert into charger. Risk of electric shock or electrocution.
- Do not allow any liquid to get inside charger. Electric shock may result.
- This charger is not intended for any uses other than charging rechargeable batteries.
- Do not place any object on top of the charger, do not place the charger near a heat source or on a soft surface that may result in excessive internal heat.

- Make sure the cord is positioned so that it will not be stepped on, tripped over, or otherwise subjected to damage or stress.
- Do not use the charger if it has been subjected to a hard impact, been dropped or otherwise damaged in any way.
- DO NOT store or use the tool and battery pack in locations where the temperature may reach or exceed 50 °C (122 °F).
- The charger is designed to operate on standard household electrical power (100–240 VAC). Do not attempt to use it at any other voltage.

Safety warnings common for polishing

- **This power tool is intended to function as a polisher. Read all safety warnings, instructions, illustrations and specifications provided with this power tool.** Failure to follow all instructions listed below may result in electric shock, fire and/or serious injury.
- **Operations such as grinding, sanding, wire brushing or cutting-off are not recommended to be performed with this power tool.** Operations for which the power tool was not designed may create a hazard and cause personal injury.
- **Do not use accessories which are not specifically designed and recommended by the tool manufacturer.** Just because the accessory can be attached to your power tool, it does not assure safe operation.
- **The rated speed of the accessory must be at least equal to the maximum speed marked on the power tool.** Accessories running faster than their rated speed can break and fly apart.
- **The outside diameter and the thickness of your accessory must be within the capacity rating of your power tool.** Incorrectly sized accessories cannot be adequately guarded or controlled.
- **Threaded mounting of accessories must match the grinder spindle thread. For accessories mounted by flanges, the arbour hole of the accessory must fit the locating diameter of the flange.** Accessories that do not match the mounting hardware of the power tool will run out of balance, vibrate excessively and may cause loss of control.
- **Do not use a damaged accessory. Before each use inspect the accessory such as abrasive wheels for chips and cracks, backing pad for cracks, tear or excess wear, wire brush for loose or cracked wires. If power tool or accessory is dropped, inspect for damage or install an undamaged accessory. After inspecting and installing an accessory, position yourself and bystanders away from the plane of the rotating accessory and run the power tool at maximum no-load speed for one minute.** Damaged accessories will normally break apart during this test time.
- **Wear personal protective equipment. Depending on application, use face shield, safety goggles or safety glasses. As appropriate, wear dust mask, hearing protectors, gloves and workshop apron capable of stopping small abrasive or workpiece fragments.** The eye protection must be capable of stopping flying debris generated by various operations. The dust mask or respirator must be capable of filtrating particles generated by your operation. Prolonged exposure to high intensity noise may cause hearing loss.
- **Keep bystanders a safe distance away from work area. Anyone entering the work area must wear personal protective equipment.** Fragments of workpiece or of a broken accessory may fly away and cause injury beyond immediate area of operation.
- **Position the cord clear of the spinning accessory.** If you lose control, the cord may be cut or snagged and your hand or arm may be pulled into the spinning accessory.
- **Never lay the power tool down until the accessory has come to a complete stop.** The spinning accessory may grab the surface and pull the power tool out of your control.
- **Do not run the power tool while carrying it at your side.** Accidental contact with the spinning accessory could snag your clothing, pulling the accessory into your body.
- **Regularly clean the power tool's air vents.** The motor's fan will draw the dust inside the housing and excessive accumulation of powdered metal may cause electrical hazards.
- **Do not operate the power tool near flammable materials.** Sparks could ignite these materials.
- **Do not use accessories that require liquid coolants.** Using water or other liquid coolants may result in electrocution or shock.

NOTE: The above warning does not apply for power tools specifically designed for use with a liquid system.

Further safety instructions for all operations

Kickback and related warnings

Kickback is a sudden reaction to a pinched or snagged rotating wheel, backing pad, brush or any other accessory. Pinching or snagging causes rapid stalling of the rotating accessory which in turn causes the uncontrolled power tool to be forced in the direction opposite of the accessory's rotation at the point of the binding.

For example, if an abrasive wheel is snagged or pinched by the workpiece, the edge of the wheel that is entering into the pinch point can dig into the surface of the material causing the wheel to climb out or kick out. The wheel may either jump toward or away from the operator, depending on direction of the wheel's movement at the point of pinching. Abrasive wheels may also break under these conditions.

Kickback is the result of power tool misuse and/or incorrect operating procedures or conditions and can be avoided by taking proper precautions as given below.

- **Maintain a firm grip on the power tool and position your body and arm to allow you to resist kickback forces. Always use auxiliary handle, if provided, for maximum control over kickback or torque reaction during start-up.** The operator can control torque reactions or kickback forces, if proper precautions are taken.
- **Never place your hand near the rotating accessory.** Accessory may kickback over your hand.
- **Do not position your body in the area where power tool will move if kickback occurs.** Kickback will propel the tool in direction opposite to the wheel's movement at the point of snagging.
- **Use special care when working corners, sharp edges etc. Avoid bouncing and snagging the accessory.** Corners, sharp edges or bouncing have a tendency to snag the rotating accessory and cause loss of control or kickback.
- **Do not attach a saw chain woodcarving blade or toothed saw blade.** Such blades create frequent kickback and loss of control.

Additional safety instructions for polishing operations

Safety warnings specific for polishing operations

- **Do not allow any loose portion of the polishing bonnet or its attachment strings to spin freely. Tuck away or trim any loose attachment strings.** Loose and spinning attachment strings can entangle your fingers or snag on the workpiece.



Additional safety warnings


- Read all instructions before using this tool. All operators must be fully trained in the proper, safe use of this tool.
- All maintenance must be carried out by trained personnel. For service, contact a Mirka authorized service center.
- If the tool appears to malfunction, stop using it immediately and arrange for service and repair.

Additional information on battery and charger

- Never attempt to open the battery pack for any reason. If the plastic housing of the battery pack breaks or cracks, immediately discontinue use and do not recharge.

Technical data

Polisher	Mirka® AROP-B 312NV	Mirka® ARP-B 300NV
Voltage	10.8 VDC	10.8 VDC
Speed	4,000–7,000 rpm	1,500–2,200 rpm
Orbit	12.0 mm (1/2")	0 mm (0")
Size of backing pad	Ø 77 mm (3")	Ø 77 mm (3")
Weight (incl. battery)	0.89 kg (1.96 lbs)	0.87 kg (1.92 lbs)

Battery charger	Mirka BCA 108
Input	120 VAC, 60 Hz
Charging time	< 40 min (2.0 Ah)
Storage temperature range	-20 °C ... 80 °C (-4 °F ... 176 °F)
Charging temperature	4 °C ... 40 °C (39 °F ... 104 °F)
Dimension	191 x 102 x 86 mm (7.5 x 4 x 3.4")
Weight	0.66 kg (1.46 lbs)
Degree of protection	II / 

Battery pack	Mirka BPA 10820	Mirka BPA 10825	Mirka BPA 10850
Type	Rechargeable Li-ion 31XR19/65	Rechargeable Li-ion 31NR19/65	Rechargeable Li-ion 31NR19/65-2
Battery voltage	10.8 VDC	10.8 VDC	10.8 VDC
Capacity	2.0 Ah / 21.6 Wh	2.5 Ah / 27.0 Wh	5.0 Ah / 54.0 Wh
Weight	0.18 kg (0.4 lbs)	0.18 kg (0.4 lbs)	0.38 kg (0.83 lbs)
Intelligent battery	No	Yes	Yes

Noise and vibration information

Measured values are determined according to EN 60745 and EN 62841.

Polisher	Mirka® AROP-B 312NV	Mirka® ARP-B 300NV
Sound pressure level (L_{pA})	60.0 dB(A)	57.0 dB(A)
Sound power level (L_{wA})	71.0 dB(A)	68.0 dB(A)
Sound measurement uncertainty K	3.0 dB(A)	3.0 dB(A)
Vibration emission value a_h^*	6.9 m/s ²	1.8 m/s ²
Vibration emission uncertainty K *	1.5 m/s ²	1.5 m/s ²

Specifications subject to change without prior notice. Model range may vary between markets.

* To reflect normal working conditions, the operating conditions during the test deviated from the standard method as follows: Use of polishing pad without polishing compound. Feed force was 30 N ± 5 N.

The values in the table are derived from laboratory testing in conformity with specified codes and standards and are not sufficient for risk evaluation. Values measured in a particular workplace may be higher than the declared values. The actual exposure values and amount of risk or harm experienced by an individual are unique to each situation and depend on the surrounding environment, individual work styles, the particular material being worked, work station design and the user's exposure time and physical condition. Mirka Ltd. accepts no responsibility for the consequences of using declared values instead of actual exposure values for any individual risk assessment.

Further occupational health and safety information is available on the following websites:
<https://osha.europa.eu/en> (Europe) or <http://www.osha.gov> (USA)

Proper use of the tool

This polisher is designed for polishing all types of materials such as paints, metals, wood, stone, plastics, etc., using polish specially designed for the given material. Do not use this polisher for any other purpose than that specified without consulting the manufacturer or the manufacturer's authorized supplier. Do not use backing pads with an operating speed of less than 8,000 rpm free speed. Any maintenance or repair work requiring the motor housing to be opened may only be performed by an authorized service center.

Battery and charger

- The battery pack is not fully charged out of the carton. Read the safety instructions first and then charge the battery accordingly.
- For optimal charging capacity, the battery should be charged at an ambient temperature between 18 °C (64 °F) and 24 °C (75 °F). To prevent damage to the battery pack, do not charge where the air temperature is below 4 °C (39°F) or above 40 °C (104 °F).
- For the longest possible battery life, we suggest the following:
 - Store and charge your battery in a cool area. Temperatures above or below normal room temperature will shorten battery life.
 - Never store the battery in a discharged state. Recharge it immediately after discharge.
- All batteries gradually lose their charge. The higher the temperature, the quicker this happens.

If you store your tool for long periods of time without use, recharge the battery every month. This practice will prolong battery life.

Charging procedure

- Connect the power cord to the charger and plug into an outlet before inserting the battery pack. All three charging lights will glow for two seconds and then go out.
- Insert the battery pack into the charger.
- During the charging process, the charging lights will indicate the status as follows:
 - The three charging lights will flash in sequence during the charging process.
 - When fully charged, all three lights will glow steadily.
- The charging process will last approximately 40 minutes for the BPA 10820, 50 minutes for the BPA 10825 and 100 minutes for the BPA 10850 battery pack.

NOTE: This charger can only charge Mirka 10.8 V battery packs.

NOTE: Charging times may be longer depending on the ambient temperature and battery condition.

LED indication of 10.8 V charger

LED						
3						
2						
1						
Status	Pre-charge (Trickle charge)	Charging...	Charging...	Charging finished	Over temperature	Battery failure

Steady glow

Flashing

Charger diagnostics

The charger will indicate if:

- A battery pack is overheated. All three charging lights will flash. Remove the battery, allow it to cool down for 15–30 minutes and re-insert.
- A malfunction occurs in the battery or the charger. Two charging lights will flash. Remove the battery and allow it to cool down. Re-insert the battery pack into the charger. If two charging lights still flash, the battery or charger may require service.

Getting started

- When unpacking the tool, make sure it is intact, complete and has not been damaged in transport. Never use a damaged tool.
- Before use, check that the backing pad is correctly mounted.
- Insert the fully charged battery pack into the polisher until it locks in place with a click.

Operating instructions

- The tool is intended to be operated as a hand-held tool. It can be used in any position.
- Select a suitable polishing pad and secure it to the backing pad. Make sure the polishing pad is centered on the backing pad.
- You power on and start the polisher by pressing the switch trigger.
- The polisher will run as long as the trigger is pressed. When the trigger is released, the polisher stops but remains in active mode for a short time before it automatically deactivates / powers off.
- When polisher is in active mode, the right LED is green.
- When an intelligent battery is used, all three LEDs will flash green for three seconds during startup.
- In active mode, the left LED shows the battery status:
 - **Green:** Battery charge level is OK.
 - **Flashing green:** Battery charge level is below 75%.
 - **Flashing green/red:** Battery charge level is below 50%.
 - **Flashing red:** Battery charge level or battery health (only available with intelligent battery) is under 25%.
 - **Red:** Battery voltage too low, polisher is not operable.

AROP-B: 4,000–7,000 rpm. Use the trigger to adjust the speed between 4,000 and max rpm. In active mode, you can adjust the rpm by pressing rpm+ or rpm–, see Figure 1. The rpm can be adjusted in steps of 500 rpm between 4,000 and 7,000.

ARP-B: 1,500–2,200 rpm. Use the trigger to adjust the speed between 1,500 and max rpm. In active mode, you can adjust the rpm by pressing rpm+ or rpm–, see Figure 1. The speed settings are 1,500, 1,600, 1,700, 1,800, 1,900, 2,050 and 2,200 rpm.

- You can lock the speed to prevent an accidental rpm change. Wait until the polisher is not in active mode. Simultaneously press and hold both the rpm+ and rpm– buttons and then pull the switch trigger. Repeat the same operation to unlock the tool. If rpm+ or rpm– is pressed in speed lock mode, the right led flashes red twice but no speed change occurs.
- When polishing, always place the tool against the work surface before starting it. Always remove the tool from the work surface before stopping it. This will prevent damage to the work surface due to excess speed of the polishing pad.
- When polishing is finished, remove the battery from the polisher by simultaneously pressing the buttons on both sides. Charge the battery.

Bluetooth

This tool is equipped with Bluetooth low energy technology and can be connected to an App from which additional tool functionality can be accessed. For more information on the App functionality and if it is available in your country, go to www.mirka.com.

Activate Bluetooth on your Mirka® AROP-B and Mirka® ARP-B as follows:

1. Connect the battery to the tool.
2. Press and hold the rpm+ button while activating the tool by pressing the switch trigger.
3. Middle LED is flashing green, to indicate that Bluetooth is active and ready for connections.
4. Middle LED is lit green when the tool is connected to another Bluetooth device.
5. Bluetooth is deactivated when the tool is deactivated/turned off.

NOTE! If the App is not installed or if it is not available in your country, Bluetooth shall not be activated.

The Bluetooth® word mark and logos are registered trademarks owned by the Bluetooth SIG, Inc. and any use of such marks by Mirka Ltd is under license. Other trademarks and trade names are those of their respective owners. Compliance with the radio regulations in North America has been verified in accordance with FCC Part 15 subpart B and C, RSS-GEN, RSS-247 and FCC §15.247.

Maintenance



Always remove the battery before maintenance!
Only use original Mirka spare parts!

Replacing the backing pad

1. Hold the spindle with the pad wrench.
2. Turn the backing pad counter-clockwise to remove it.
3. Fit and tighten the new backing pad using the pad wrench.

Cleaning

Use a soft brush to remove any accumulated dust. Wear safety glasses to protect your eyes while cleaning. If the body of the tool needs cleaning, wipe it with a soft damp cloth. A mild detergent can be used.



WARNING: Never use alcohol, gasoline or other cleaning agent. NEVER use caustic agents to clean plastic parts

Charger cleaning instructions

Dirt and grease may be removed from the exterior of the charger using a cloth or soft non-metallic brush. Do not use water or any cleaning solutions.



Further service

Service must always be performed by trained personnel. To keep the tool warranty valid and ensure optimal tool safety and function, service must be carried out by a Mirka authorized service center. To locate your local Mirka authorized service center, contact Mirka Customer service or your Mirka dealer.

Troubleshooting guide

Symptom	Possible cause	Solution
No light from the right LED of the polisher when trigger is pressed.	Battery pack not properly attached to the polisher. Battery not charged.	Insert the battery properly. Charge the battery.
The right polisher LED is red and the polisher slows down to 4,000 rpm (AROP-B 312NV) or 1,500 rpm (ARP-B 300NV) or stops when polishing.	Temperature too high in the polisher. Heavy load for too long.	Reduce the load on the polisher for some time and the polisher will speed up again.
The right LED of the polisher is red and rpm is slightly reduced.	Too heavy short-term load.	Use lighter load or wait a moment and the LED will automatically change to green.
The left LED of the polisher is red and the polisher does not run.	The battery voltage is too low.	Charge the battery.
The left LED of the polisher flashes red although the battery is fully charged.	Battery failure. Please use the app for diagnostics.	Replace the battery.

Disposal information



DANGER: Disposal guidelines for old appliances. Render discarded power tools unusable by removing the power cord. For EU countries only: Do not dispose of electric tools along with household waste. According to European Directives 2011/65/EU, 2012/19/EU + 2003/108/EC on waste electrical and electronic equipment and their implementation under national law, electric tools that have reached the end of their life must be collected separately and taken to an environmentally compatible recycling facility.



MIRKA



Mirka Ltd

Finland

Brazil Mirka Brasil Ltda.

Belgium Mirka Belgium Logistics NV

Canada Mirka Canada Inc.

China Mirka Trading Shanghai Co., Ltd

Finland & Baltics Mirka Ltd

France Mirka France Sarl

Germany Mirka GmbH

India Mirka India Pvt Ltd

Italy Mirka Italia s.r.l., Cafro S.p.A.

Mexico Mirka Mexicana S.A. de C.V.

Russia Mirka Rus LLC

Singapore Mirka Asia Pacific Pte Ltd

Spain Mirka Ibérica S.A.U.

Sweden Mirka Scandinavia AB

Turkey Mirka Turkey Zımpara Ltd Şirketi

United Kingdom Mirka (UK) Ltd

United Arab Emirates Mirka Middle East FZCO

USA Mirka USA Inc.

For contact information,
please visit www.mirka.com

Dedicated to the finish

